

# SCHOOLCRAFT COUNTY

CERTIFICATION AS OF DECEMBER 31, 2022

INDEX

- Map 1 Doyle Twp. #1
- Map 2 Doyle Twp. #2
- Map 3 Doyle Twp. #3
- Map 4 Doyle Twp. #4
- Map 5 Doyle Twp. #5
- Map 6 Doyle Twp. #6
- Map 7 Doyle Twp. #7
  
- Map 8 Germfask Twp. #1
- Map 9 Germfask Twp. #2
- Map 10 Germfask Twp. #3
  
- Map 11 Hiawatha Twp. #1
- Map 12 Hiawatha Twp. #2
- Map 13 Hiawatha Twp. #3
- Map 14 Hiawatha Twp. #4
- Map 15 Hiawatha Twp. #5
- Map 16 Hiawatha Twp. #6
- Map 17 Hiawatha Twp. #7
- Map 18 Hiawatha Twp. #8
- Map 19 Hiawatha Twp. #9
- Thompson Twp. #4
- Map 20 Hiawatha Twp. #10
- Map 21 Hiawatha Twp. #11
- Map 22 Hiawatha Twp. #12
  
- Map 23 Inwood Twp. #1
- Thompson Twp. #1
- Map 24 Inwood Twp. #2
- Thompson Twp. #2
- Map 25 Inwood Twp. #3
- Thompson Twp. #3
  
- Map 26 Inwood Twp. #4
- Map 27 Inwood Twp. #5
- Map 28 Inwood Twp. #6
- Map 29 Inwood Twp. #7
  
- Map 30 Manistique Twp. #1
- Map 31 Manistique Twp. #2
- Map 32 Manistique Twp. #3
- Map 33 Manistique Twp. #4
- Map 34 Manistique Twp. #5
- Map 35 Manistique Twp. #6
- Map 36 Manistique Twp. #7
  
- Map 37 Mueller Twp. #1
- Map 38 Mueller Twp. #2
- Map 39 Mueller Twp. #3
  
- Map 40 Seney Twp. #1
- Map 41 Seney Twp. #2
- Map 42 Seney Twp. #3
- Map 43 Seney Twp. #4
- Map 44 Seney Twp. #5
- Map 45 Seney Twp. #6
- Map 46 Seney Twp. #7
  
- Map 47 Thompson Twp. #5
- Map 48 Thompson Twp. #6
- Map 49 Thompson Twp. #7

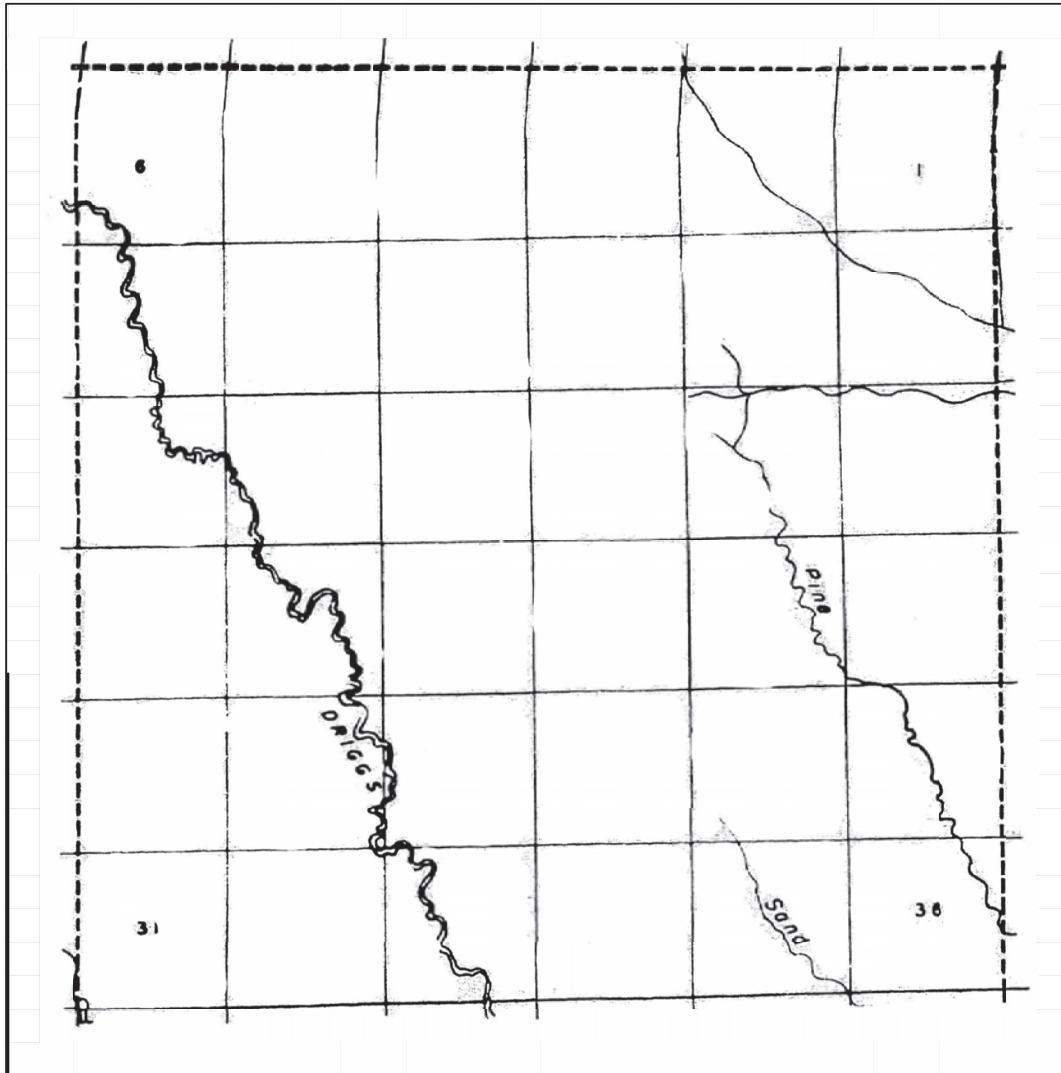
"I CERTIFY THAT ALL OF THE ROADS ON WHICH LENGTHS HAVE BEEN ENTERED ALONG THE ROAD BANDS OF THE ATTACHED TOWNSHIP AND ENLARGE SECTION MAPS ARE NORMALLY OPEN TO AUTOMOBILE TRAFFIC DURING THE MONTHS OF MAY THROUGH OCTOBER AND ARE UNDER THE JURISDICTION OF THE SCHOOLCRAFT COUNTY ROAD COMMISSION."

\_\_\_\_\_  
JEAN VANDERVILLE, MANAGING DIRECTOR

\_\_\_\_\_  
DATE

Township	Primary Road Miles	Local Road Miles	Total Township Miles
Doyle	30.45	23.84	54.29
Germfask	21.63	18.06	39.69
Hiawatha	37.69	47.64	85.33
Thompson	32.95	22.38	55.33
Inwood	38.37	41.04	79.41
Manistique	19.81	42.6	62.41
Mueller	14.12	8.83	22.95
Seney	26.85	6.41	33.26
Total	221.87	210.8	

SEE MAP 42










SEE MAP 30

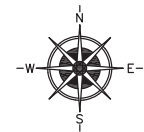
SEE MAP 9


SEE MAP 2

LEGEND

- COUNTY LINE 
- CORPORATE LIMITS 
- STATE TRUNKLINE 
- COUNTY PRIMARY 
- COUNTY LOCAL 
- ADJACENT COUNTY 
- CITY OR VILLAGE STREET 

PRIMARY ROAD SYSTEM IS 0.00 MILES  
LOCAL ROAD SYSTEM IS 0.00 MILES



SCALE 0  1 MILE  
ONE INCH EQUALS 3000 FEET

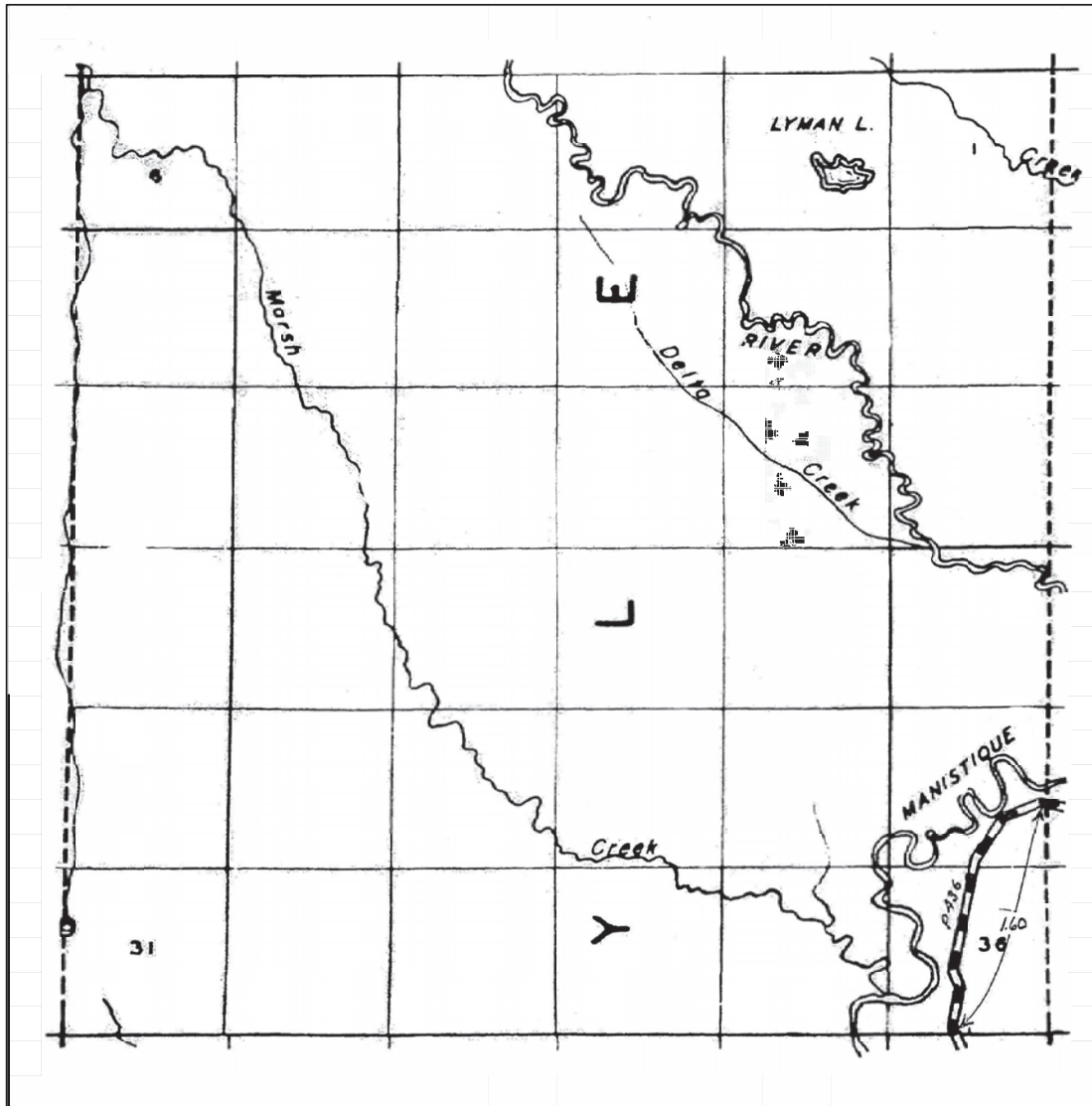
Certification Map  
of

TOWNSHIP DOYLE  
SECTION \_\_\_\_\_ T. 45N R. 14W  
COUNTY SCHOOLCRAFT - 75

Schoolcraft County Road Commission  
Certified December 31, 2021

Prepared By: Ian Stampfly - County Highway Engineer  
Schoolcraft County Road Commission

SEE MAP 1



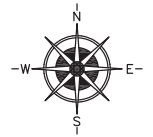
SEE MAP 3

LEGEND

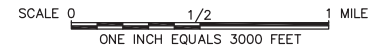
- COUNTY LINE
- CORPORATE LIMITS
- STATE TRUNKLINE
- COUNTY PRIMARY
- COUNTY LOCAL
- ADJACENT COUNTY
- CITY OR VILLAGE STREET

PRIMARY ROAD SYSTEM IS 1.60 MILES

LOCAL ROAD SYSTEM IS 0.00 MILES



P-436 RIVER ROAD - 1.60 MILES



Certification Map of

TOWNSHIP DOYLE

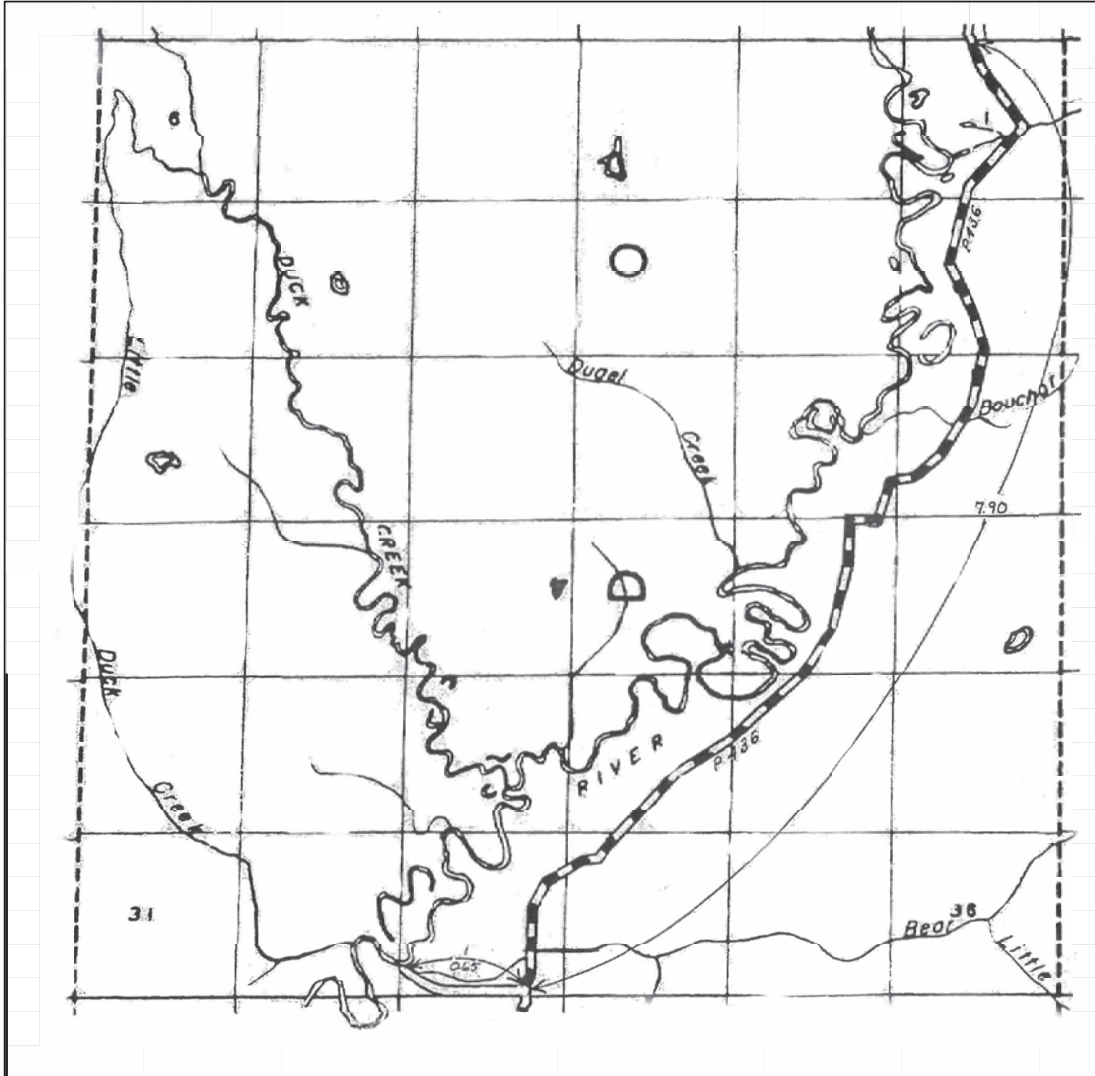
SECTION \_\_\_\_\_ T. 44N R. 14W

COUNTY SCHOOLCRAFT - 75

Schoolcraft County Road Commission  
Certified December 31, 2021

Prepared By: Ian Stampfl - County Highway Engineer  
Schoolcraft County Road Commission

SEE MAP 2



SEE MAP 4

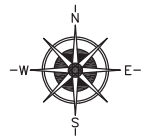
SEE MAP 32

SEE MAP 39

LEGEND

- COUNTY LINE -----
- CORPORATE LIMITS -----
- STATE TRUNKLINE -----
- COUNTY PRIMARY -----
- COUNTY LOCAL -----
- ADJACENT COUNTY -----
- CITY OR VILLAGE -----
- STREET -----

PRIMARY ROAD SYSTEM IS 7.90 MILES  
 LOCAL ROAD SYSTEM IS 0.65 MILES



SCALE 0 1/2 1 MILE  
 ONE INCH EQUALS 3000 FEET

PRIMARY

P-436 RIVER ROAD - 7.90 MILES

LOCAL

1. BOWMAN ROAD - 0.65 MILES

NUMBER OF ROAD

LENGTH IN MILES - TO THE NEAREST 1/100

Certification Map  
of

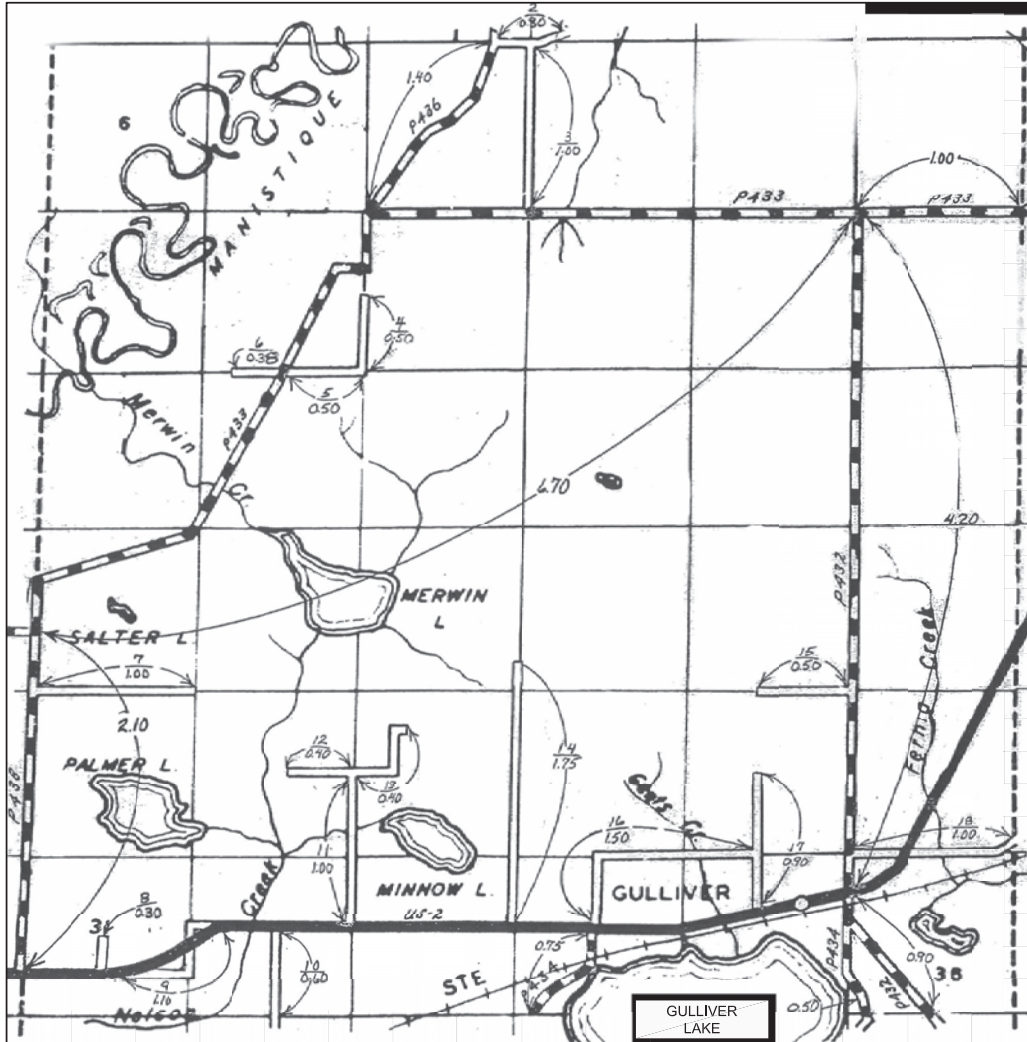
TOWNSHIP DOYLE  
 SECTION \_\_\_\_\_ T. 43N R. 14W  
 COUNTY SCHOOLCRAFT - 75

Schoolcraft County Road Commission  
 Certified December 31, 2021

Prepared By: Ian Stampfly - County Highway Engineer  
 Schoolcraft County Road Commission



SEE MAP 3



SEE MAP 5

SEE MAP 33

SEE MAP 38

LEGEND

- COUNTY LINE
- CORPORATE LIMITS
- STATE TRUNKLINE
- COUNTY PRIMARY
- COUNTY LOCAL
- ADJACENT COUNTY
- CITY OR VILLAGE STREET

PRIMARY

- P-433 RIVER ROAD - 7.70 MILES
- P-432 PORT INLAND ROAD - 5.10 MILES
- P-434 GULLIVER LAKE ROAD - 1.25 MILES
- P-436 FLOODWOOD ROAD - 1.40 MILES
- P-438 TOWNLINE ROAD - 2.10 MILES

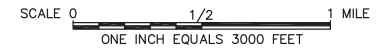
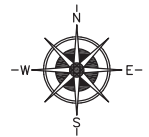
LOCAL

2. SHERIDAN ROAD - 0.80 MILES
3. HAYDEN ROAD - 1.00 MILES
4. LETSON ROAD - 0.50 MILES
5. CLARK ROAD - 0.50 MILES
6. RICE ROAD - 0.38 MILES
7. BURRELL ROAD - 1.00 MILES
8. WATSON ROAD - 0.30 MILES
9. PAWLEY ROAD - 1.10 MILES
10. BERGMAN ROAD - 0.60 MILES
11. KELLY ROAD - 1.00 MILES
12. STELZER ROAD - 0.40 MILES
13. WM NELSON ROAD - 0.40 MILES
14. COOPER ROAD - 1.75 MILES
15. FRENETTE ROAD - 0.50 MILES
16. LEX NELSON ROAD - 1.50 MILES
17. HALVERSON ROAD - 0.90 MILES
18. PARKINGTON ROAD - 1.00 MILES

NUMBER OF ROAD LENGTH IN MILES - TO THE NEAREST 1/100

NOTE: SEE MAP 6 FOR ENLARGED VIEW OF GULLIVER ROADS.

PRIMARY ROAD SYSTEM IS 17.55 MILES  
LOCAL ROAD SYSTEM IS 13.63 MILES



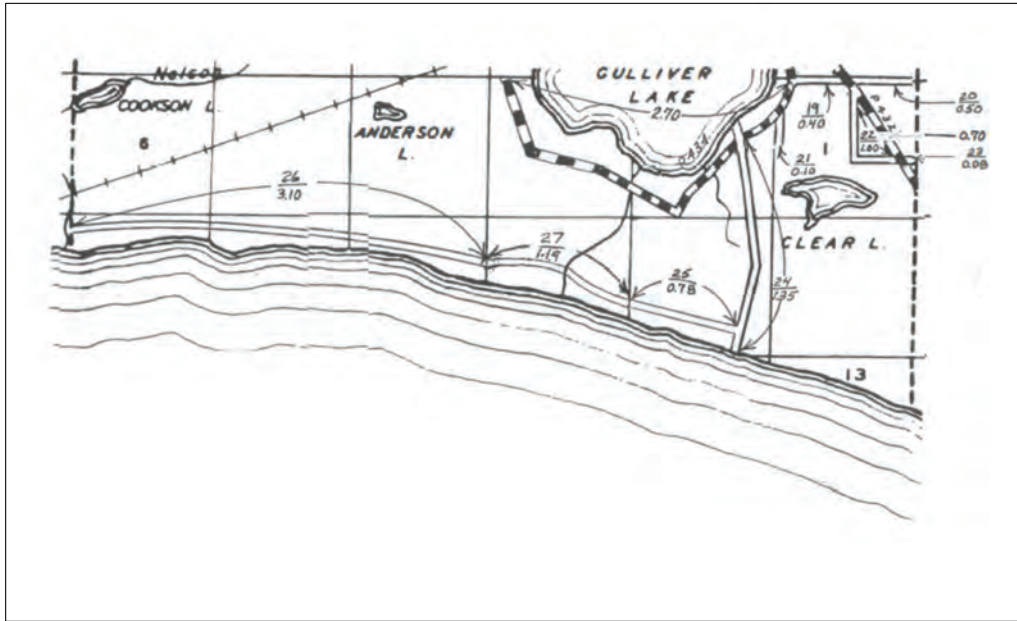
Certification Map of

TOWNSHIP DOYLE  
SECTION        T. 42N R. 14W  
COUNTY SCHOOLCRAFT - 75

Schoolcraft County Road Commission  
Certified December 31, 2021

Prepared By: Ian Stampfl - County Highway Engineer  
Schoolcraft County Road Commission

SEE MAP 4



SEE MAP 34

SEE MAP 37

**PRIMARY**

- P-432 PORT INLAND ROAD - 0.70 MILES
- P-434 GULLIVER LAKE ROAD - 2.70 MILES

**LOCAL**

- 19. JONES ROAD - 0.40 MILES
- 20. DIXNER ROAD - 0.50 MILES
- 21. AIRPORT ROAD - 0.10 MILES
- 22. REID ROAD - 1.00 MILES
- 23. McDONALD LAKE ROAD - 0.08 MILES
- 24. LAKE MICHIGAN ROAD - 1.35 MILES
- 25. MICHIGAN SHORES ROAD - 0.78 MILES
- 26. MICHIBAY ROAD - 3.10 MILES
- 27. MICHIBAY ROAD - 1.19 MILES

**NUMBER OF ROAD**

LENGTH IN MILES - TO THE NEAREST 1/100

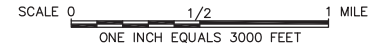
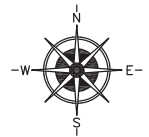
NOTE: SEE MAP 7 FOR ENLARGED VIEW OF ROADS ON THE SOUTH END OF GULLIVER LAKE.

**LEGEND**

- COUNTY LINE - - - - -
- CORPORATE LIMITS - - - - -
- STATE TRUNKLINE - - - - -
- COUNTY PRIMARY - - - - -
- COUNTY LOCAL - - - - -
- ADJACENT COUNTY - - - - -
- CITY OR VILLAGE STREET - - - - -

PRIMARY ROAD SYSTEM IS 3.40 MILES

LOCAL ROAD SYSTEM IS 8.50 MILES



Certification Map of

TOWNSHIP DOYLE  
 SECTION \_\_\_\_\_ T. 41N R. 14W  
 COUNTY SCHOOLCRAFT - 75

Schoolcraft County Road Commission  
 Certified December 31, 2021

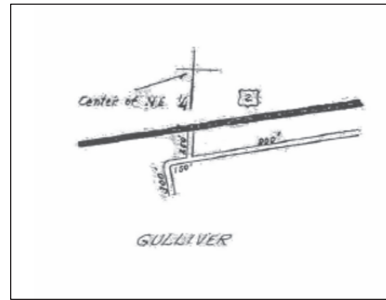
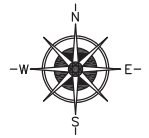
Prepared By: Ian Stampfly - County Highway Engineer  
 Schoolcraft County Road Commission

LEGEND

COUNTY LINE	-----
CORPORATE LIMITS	-----
STATE TRUNKLINE	=====
COUNTY PRIMARY	=====
COUNTY LOCAL	=====
ADJACENT COUNTY	=====
CITY OR VILLAGE STREET	=====

PRIMARY ROAD SYSTEM IS 0.00 MILES

LOCAL ROAD SYSTEM IS 0.30 MILES



LOCAL

- LAKE STREET - 250 FEET
- MINNEAPOLIS STREET - 950 FEET
- RODGERS ROAD - 300 FEET

NOTE: SEE MAP 4 FOR SURROUNDING ROADS.

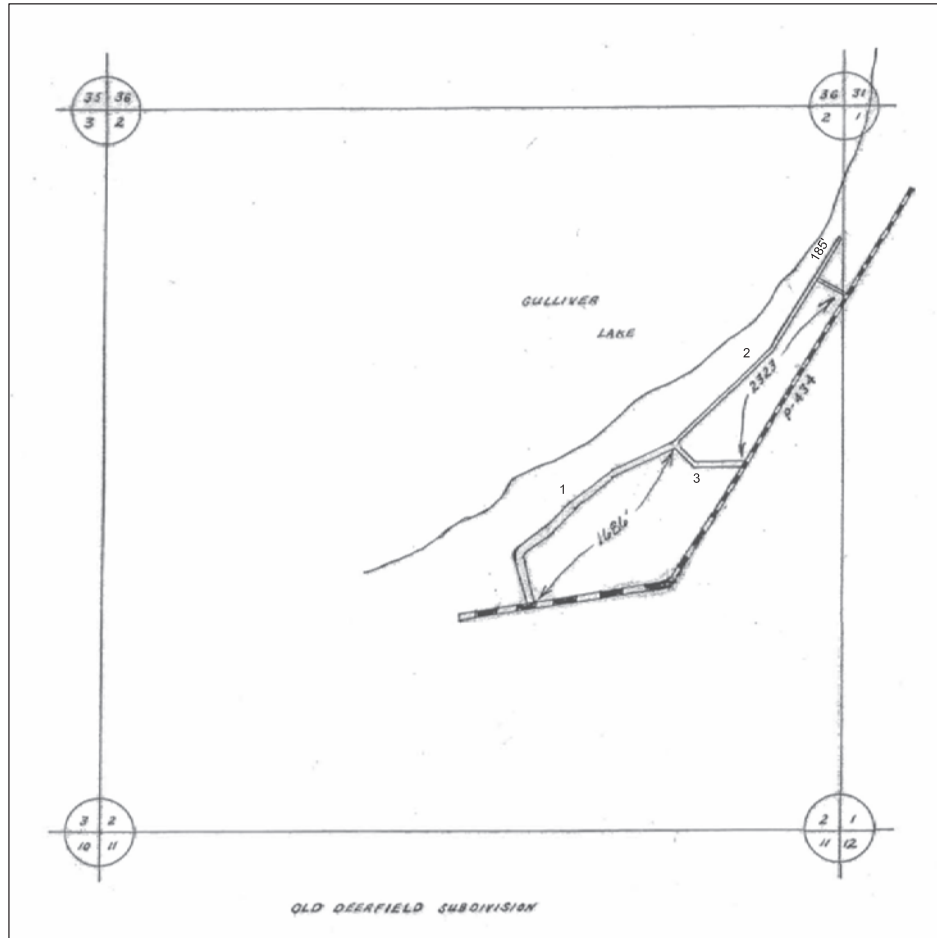
SCALE 0 600 1200 FEET  
 ONE INCH EQUALS 600 FEET

Certification Map of

TOWNSHIP DOYLE  
 SECTION 35 T. 42N R. 14W  
 COUNTY SCHOOLCRAFT - 75

Schoolcraft County Road Commission  
 Certified December 31, 2021

Prepared By: Ian Stampfly - County Highway Engineer  
 Schoolcraft County Road Commission



LEGEND

- COUNTY LINE -----
- CORPORATE LIMITS -----
- STATE TRUNKLINE -----
- COUNTY PRIMARY -----
- COUNTY LOCAL -----
- ADJACENT COUNTY -----
- CITY OR VILLAGE STREET -----

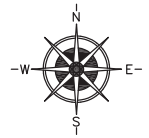
PRIMARY ROAD SYSTEM IS 0.00 MILES

LOCAL ROAD SYSTEM IS 0.76 MILES

LOCAL

1. TOWNSHIP PARK ROAD - 1686 FEET
2. CORBRIDGE ROAD - 2508 FEET
3. LAKE MICHIGAN ROAD - 470 FEET

NOTE: SEE MAP 5 FOR SURROUNDING ROADS.



SCALE 0 600 1200 FEET  
ONE INCH EQUALS 600 FEET

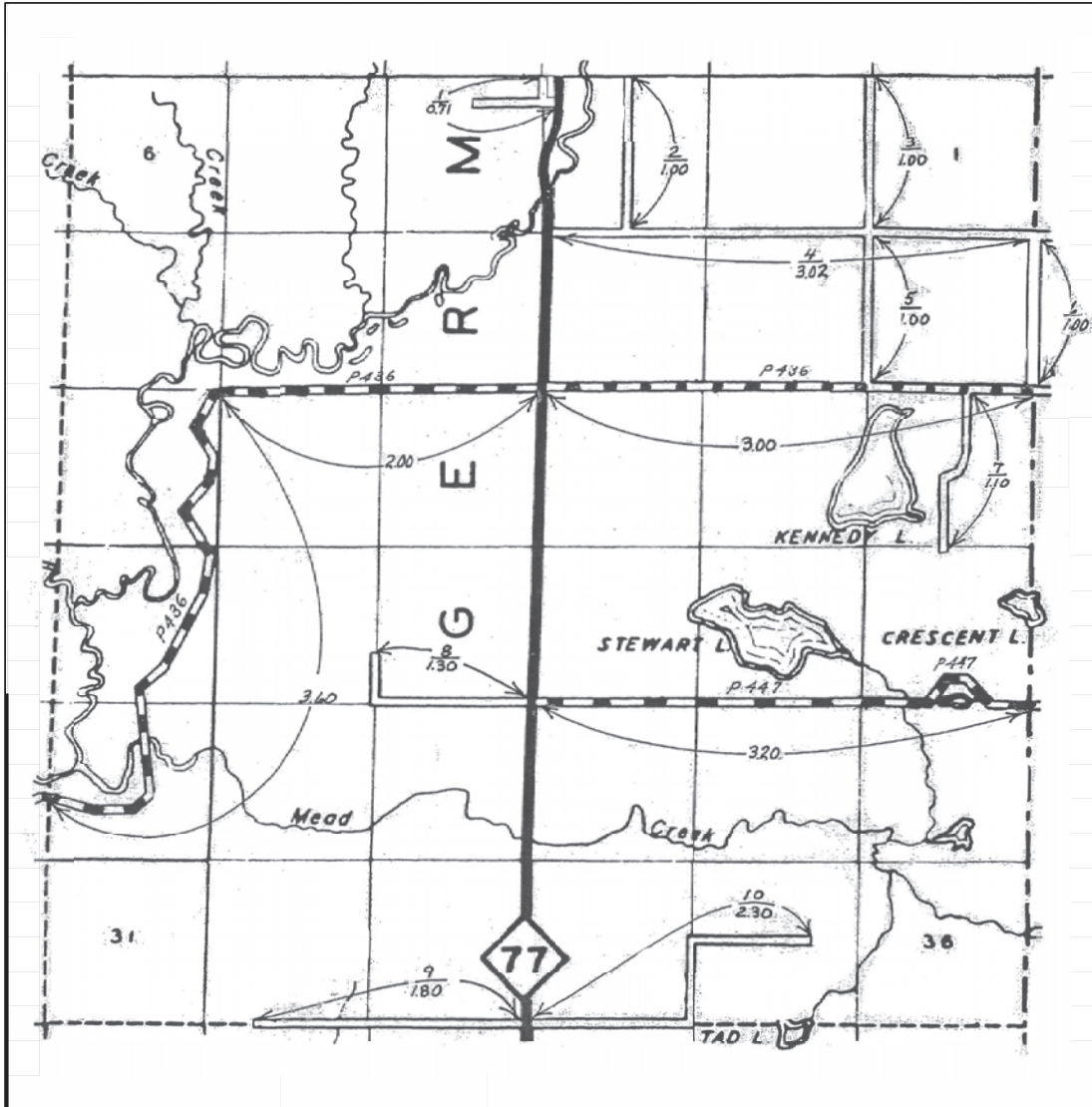
Certification Map  
of

TOWNSHIP DOYLE  
SECTION 2 T. 41N R. 14W  
COUNTY SCHOOLCRAFT - 75

Schoolcraft County Road Commission  
Certified December 31, 2021

Prepared By: Ian Stampfly - County Highway Engineer  
Schoolcraft County Road Commission

SEE MAP 9



SEE MAP 39

SEE MAP 2

MACKINAC COUNTY

LEGEND

- COUNTY LINE
- CORPORATE LIMITS
- STATE TRUNKLINE
- COUNTY PRIMARY
- COUNTY LOCAL
- ADJACENT COUNTY
- CITY OR VILLAGE STREET

PRIMARY

- P-436 FLOODWOOD ROAD - 8.60 MILES
- P-447 GRANT ROAD - 3.20 MILES

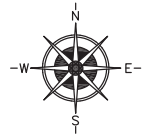
PRIMARY ROAD SYSTEM IS 11.80 MILES

LOCAL ROAD SYSTEM IS 14.23 MILES

LOCAL

1. ROBINSON STREET - 0.71 MILES
2. CORNELL ROAD - 1.00 MILES
3. ZELLAR ROAD - 1.00 MILES
4. LUSTILLA ROAD - 3.02 MILES
5. ZELLAR ROAD - 1.00 MILES
6. COUNTY LINE ROAD - 1.00 MILES
7. BURNS ROAD - 1.10 MILES
8. MEAD ROAD - 1.30 MILES
9. W. EDGE ROAD - 1.80 MILES
10. E. EDGE ROAD - 2.30 MILES

NUMBER OF ROAD LENGTH IN MILES - TO THE NEAREST 1/100



SCALE 0 1 MILE  
ONE INCH EQUALS 3000 FEET

Certification Map of

TOWNSHIP GERMFASK

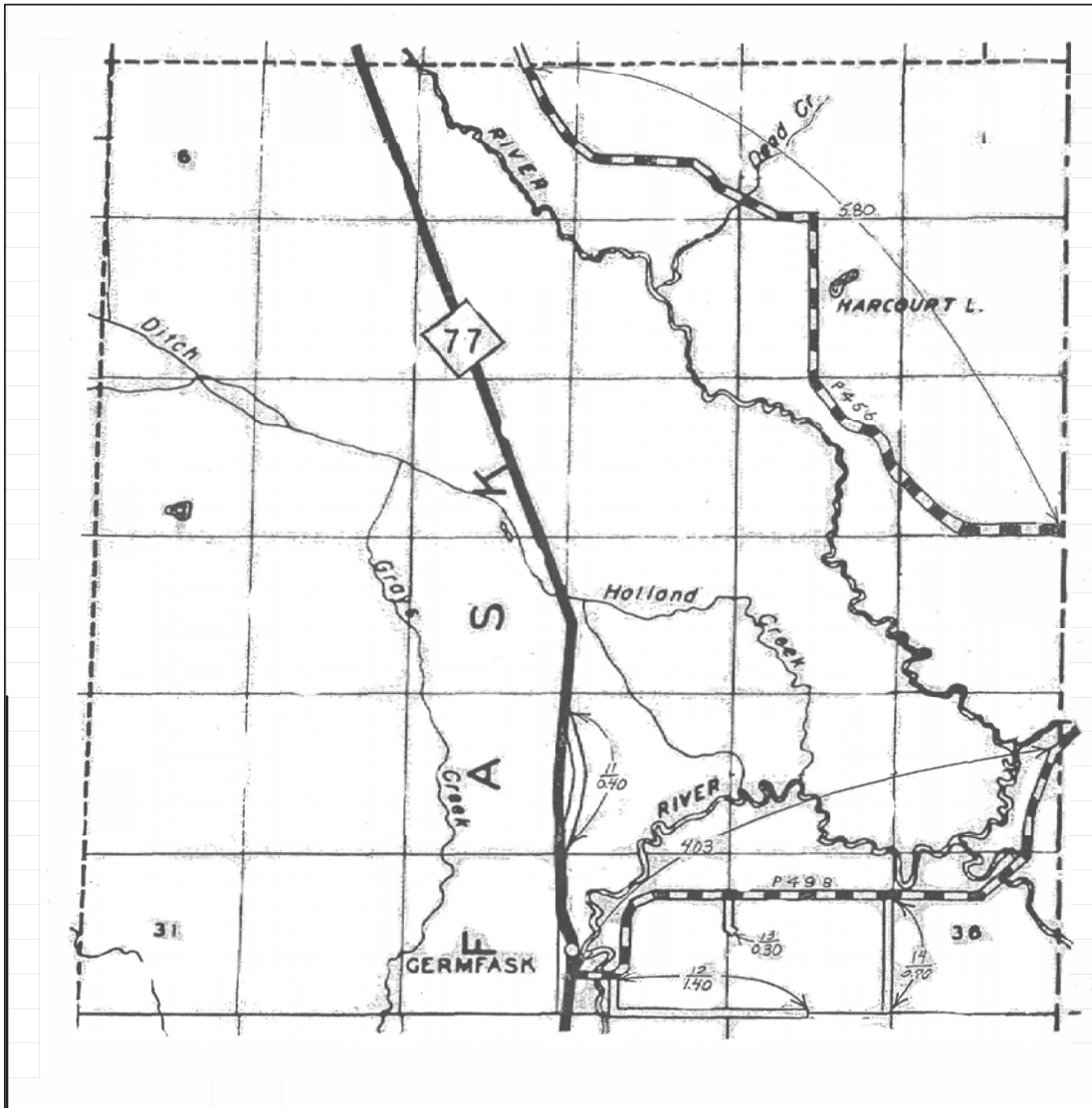
SECTION \_\_\_\_\_ T. 44N R. 13W

COUNTY SCHOOLCRAFT - 75

Schoolcraft County Road Commission  
Certified December 31, 2021

Prepared By: Ian Stampfly - County Highway Engineer  
Schoolcraft County Road Commission

SEE MAP 41



SEE MAP 8

SEE MAP 1

LUCE COUNTY

LEGEND

- COUNTY LINE
- CORPORATE LIMITS
- STATE TRUNKLINE
- COUNTY PRIMARY
- COUNTY LOCAL
- ADJACENT COUNTY
- CITY OR VILLAGE STREET

PRIMARY ROAD SYSTEM IS 9.83 MILES

LOCAL ROAD SYSTEM IS 2.80 MILES

PRIMARY

- P-498 TEN CURVES ROAD - 4.03 MILES
- P-456 OLD SENEY ROAD - 5.80 MILES

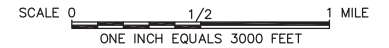
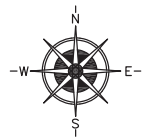
LOCAL

- 11. SHEPPARD STREET - 0.40 MILES
- 12. NEWBORN ROAD - 1.40 MILES
- 13. SMITH ROAD - 0.30 MILES
- 14. ZELLAR ROAD - 0.70 MILES

NUMBER OF ROAD

LENGTH IN MILES - TO THE NEAREST 1/100

NOTE: SEE MAP 10 FOR ENLARGED VIEW OF GERMFASK STREETS.

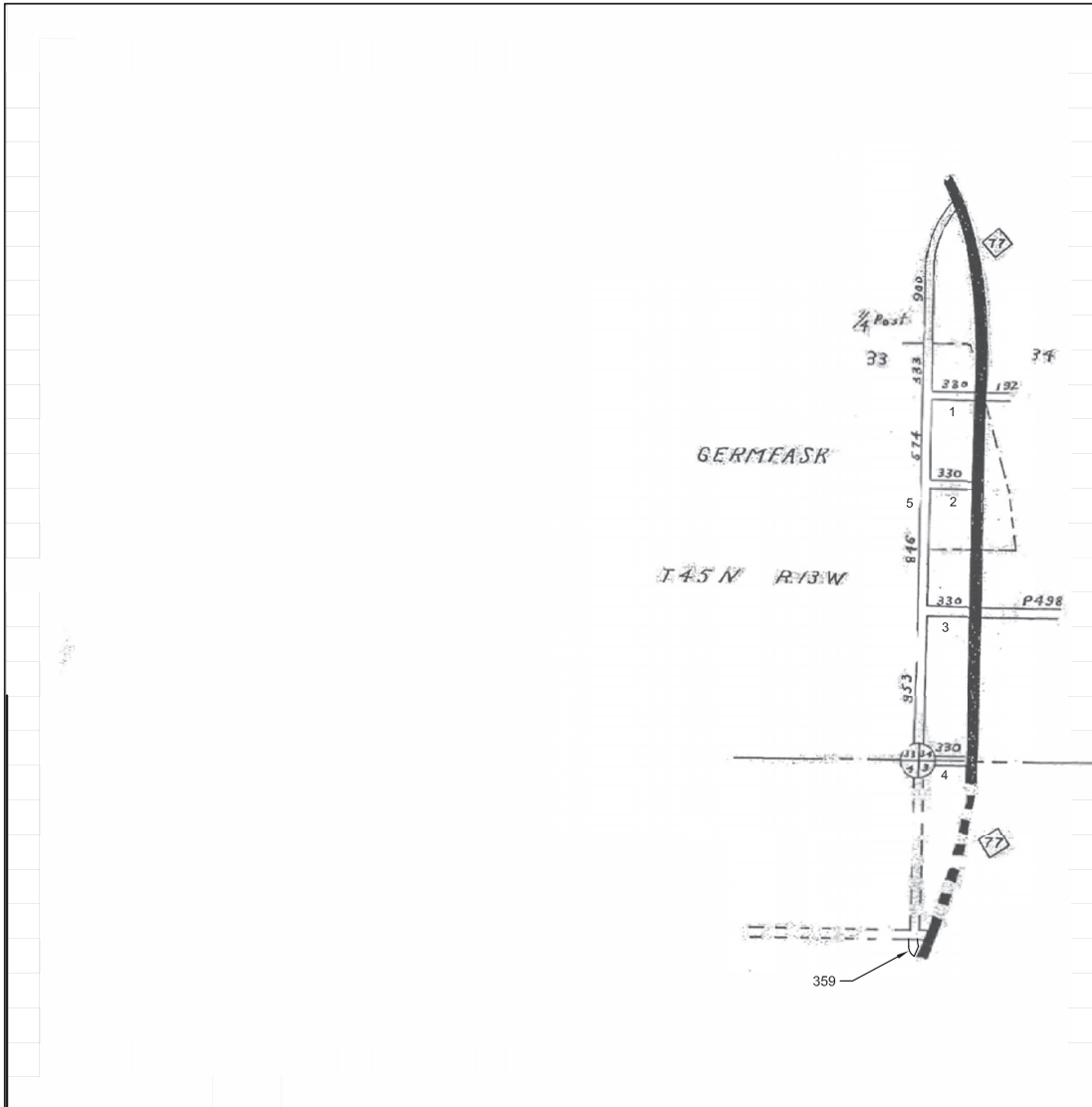


Certification Map of

TOWNSHIP GERMFASK  
 SECTION \_\_\_\_\_ T. 45N R. 13W  
 COUNTY SCHOOLCRAFT - 75

Schoolcraft County Road Commission  
Certified December 31, 2021

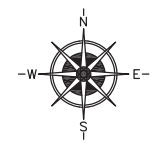
Prepared By: Ian Stampfly - County Highway Engineer  
Schoolcraft County Road Commission



LEGEND

COUNTY LINE	-----
CORPORATE LIMITS	-----
STATE TRUNKLINE	=====
COUNTY PRIMARY	=====
COUNTY LOCAL	=====
ADJACENT COUNTY	=====
CITY OR VILLAGE STREET	=====

PRIMARY ROAD SYSTEM IS 0.00 MILES  
 LOCAL ROAD SYSTEM IS 1.03 MILES



SCALE 0 600 1200 FEET  
 ONE INCH EQUALS 600 FEET

- LOCAL
1. GREEN STREET - 462 FEET
  2. MORRISON STREET - 330 FEET
  3. KNAGGS STREET - 330 FEET
  4. FRENCH STREET - 330 FEET
  5. PINE STREET - 0.75 MILES (3965 FEET)

NUMBER OF ROAD  
 LENGTH IN MILES - TO THE NEAREST 1/100

NOTE: SEE MAP 9 FOR SURROUNDING  
 ROADS.

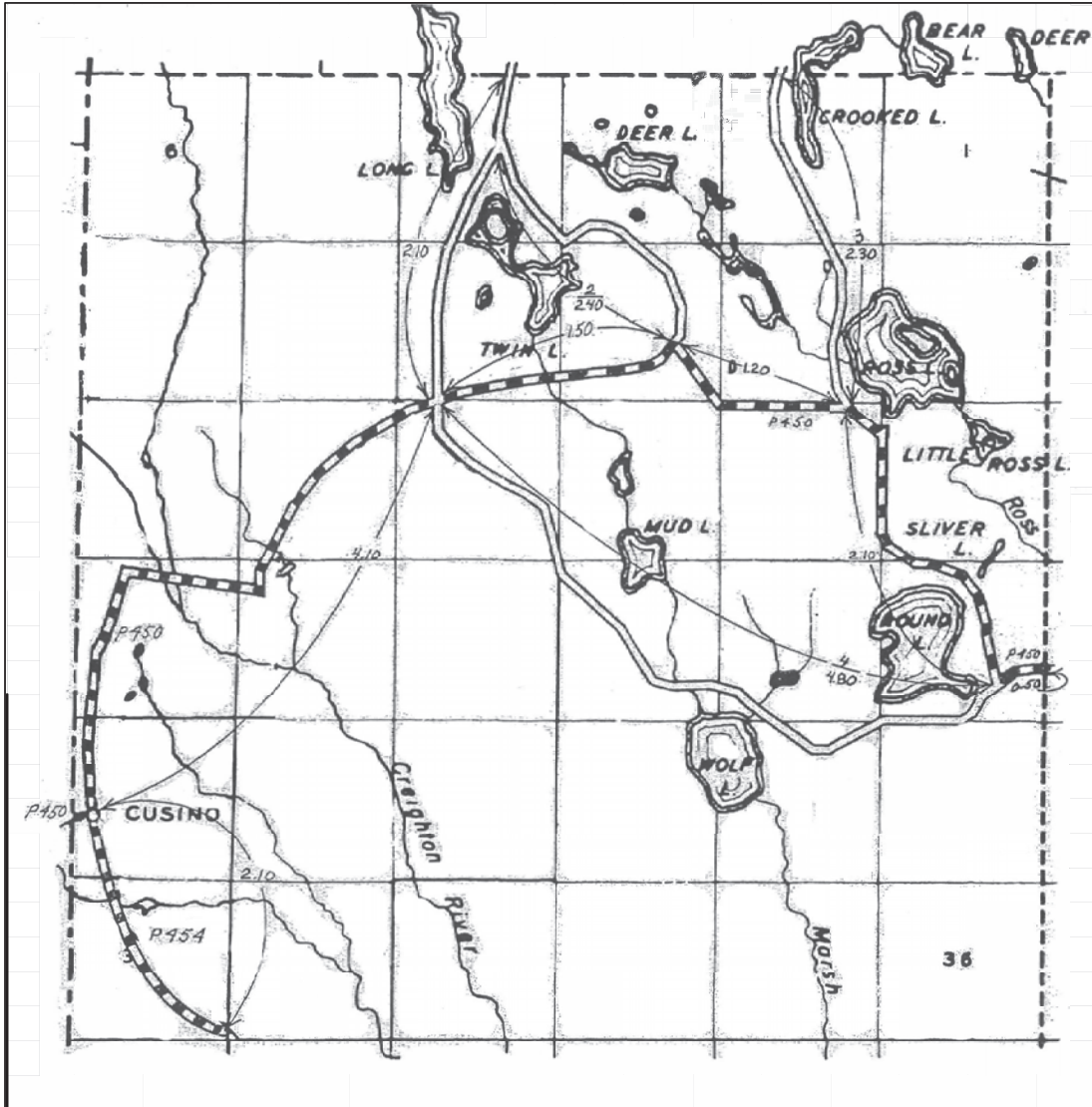
Certification Map  
 of  
 TOWNSHIP GERMFASK  
 SECTION 34 T. 45N R. 13W  
 COUNTY SCHOOLCRAFT - 75

Schoolcraft County Road Commission  
 Certified December 31, 2021

Prepared By: Ian Stampfly - County Highway Engineer  
 Schoolcraft County Road Commission



ALGER COUNTY



ALGER COUNTY

SEE MAP 44

SEE MAP 12

LEGEND

- COUNTY LINE
- CORPORATE LIMITS
- STATE TRUNKLINE
- COUNTY PRIMARY
- COUNTY LOCAL
- ADJACENT COUNTY
- CITY OR VILLAGE STREET

PRIMARY ROAD SYSTEM IS 11.50 MILES

LOCAL ROAD SYSTEM IS 11.60 MILES

PRIMARY

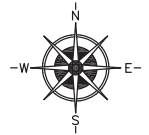
- P-450 FOX RIVER ROAD - 9.40 MILES
- P-454 CREIGHTON TRUCK TRL - 2.10 MILES

LOCAL

1. LONG LAKE ROAD - 2.10 MILES
2. TWIN LAKE ROAD - 2.40 MILES
3. CROOKED LAKE ROAD (ROSS LK RD) - 2.30 MILES
4. WOLF LAKE ROAD - 4.80 MILES

NUMBER OF ROAD

LENGTH IN MILES - TO THE NEAREST 1/100



SCALE 0 1 MILE  
ONE INCH EQUALS 3000 FEET

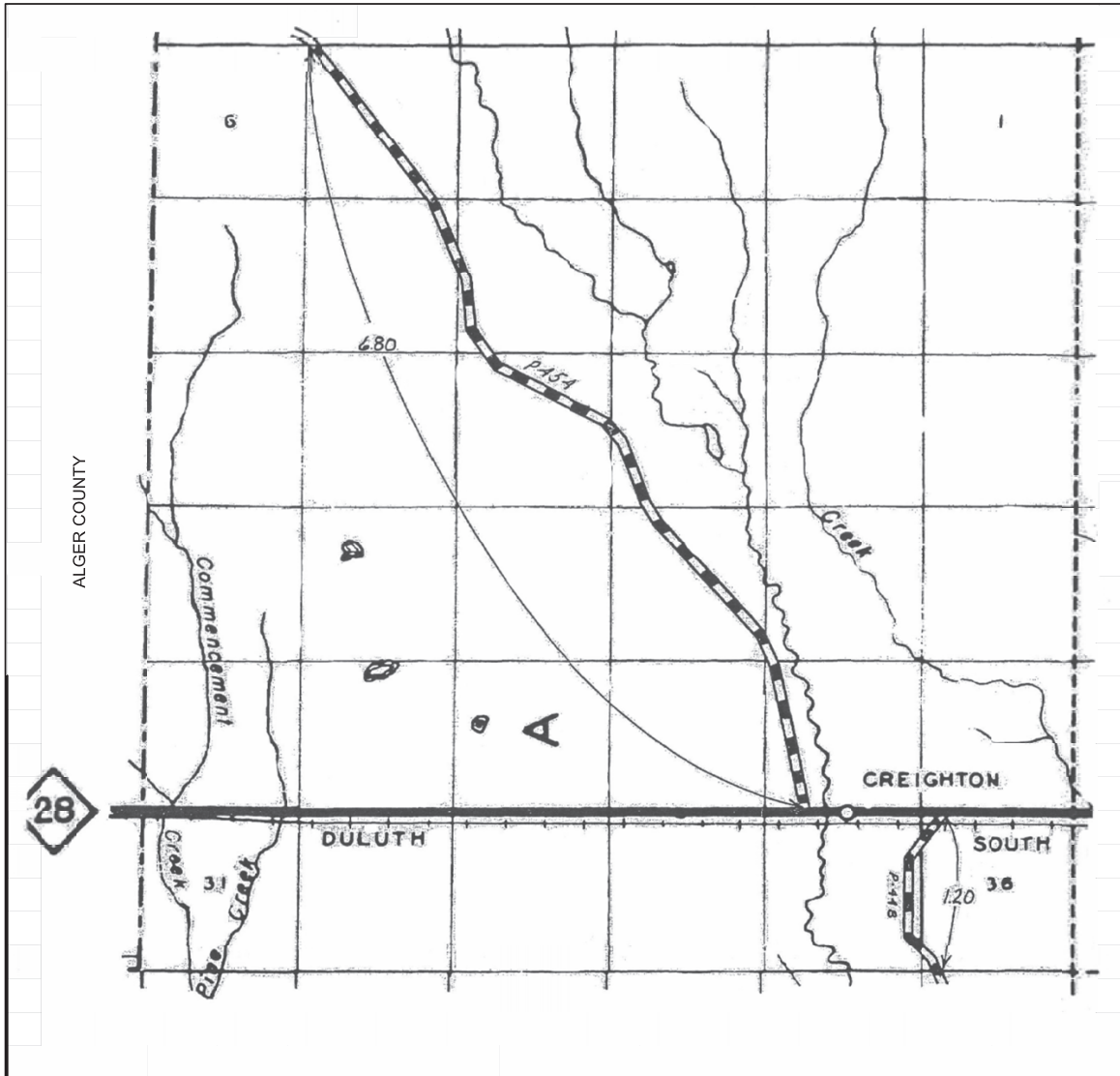
Certification Map of

TOWNSHIP HIAWATHA  
SECTION \_\_\_\_\_ T. 47N R. 16W  
COUNTY SCHOOLCRAFT - 75

Schoolcraft County Road Commission  
Certified December 31, 2021

Prepared By: Ian Stampfly - County Highway Engineer  
Schoolcraft County Road Commission

SEE MAP 11



SEE MAP 13

LEGEND

- COUNTY LINE -----
- CORPORATE LIMITS -----
- STATE TRUNKLINE -----
- COUNTY PRIMARY -----
- COUNTY LOCAL -----
- ADJACENT COUNTY -----
- CITY OR VILLAGE -----
- STREET -----

PRIMARY ROAD SYSTEM IS 8.00 MILES

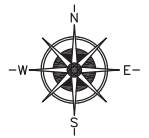
LOCAL ROAD SYSTEM IS 0.00 MILES

PRIMARY

- P-454 CREIGHTON TRUCK TRL - 6.80 MILES
- P-448 SOUTH CREIGHTON ROAD - 1.20 MILES

LOCAL

NUMBER OF ROAD  
LENGTH IN MILES - TO THE NEAREST 1/100



SCALE 0 1/2 1 MILE  
ONE INCH EQUALS 3000 FEET

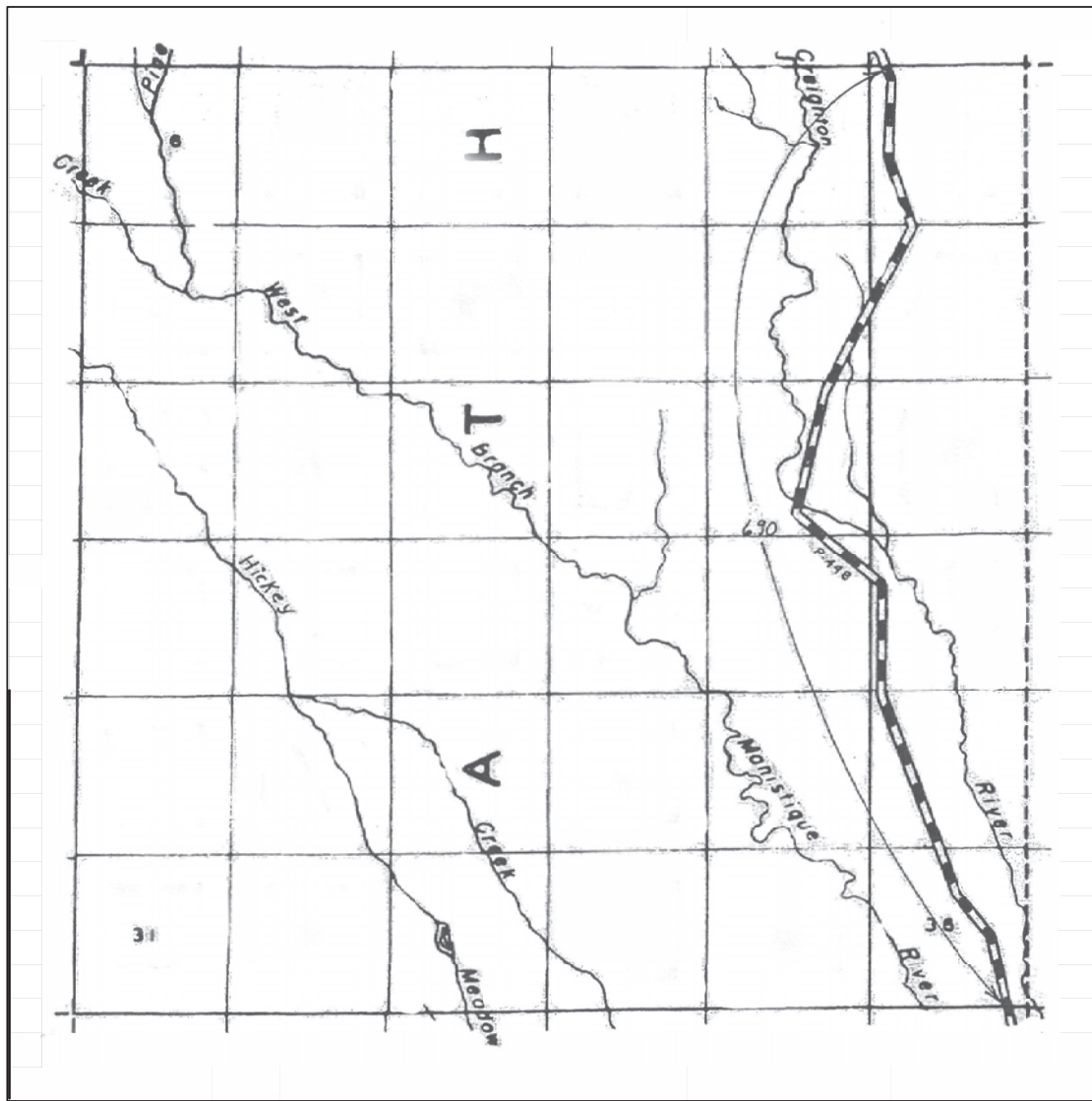
Certification Map  
of

TOWNSHIP HIAWATHA  
SECTION \_\_\_\_\_ T. 46N R. 16W  
COUNTY SCHOOLCRAFT - 75

Schoolcraft County Road Commission  
Certified December 31, 2021

Prepared By: Ian Stampfly - County Highway Engineer  
Schoolcraft County Road Commission

SEE MAP 12



SEE MAP 14

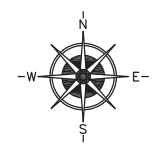
SEE MAP 17

SEE MAP 30

LEGEND

COUNTY LINE	-----
CORPORATE LIMITS	-----
STATE TRUNKLINE	=====
COUNTY PRIMARY	—————
COUNTY LOCAL	—————
ADJACENT COUNTY	=====
CITY OR VILLAGE STREET	

PRIMARY ROAD SYSTEM IS 6.90 MILES  
 LOCAL ROAD SYSTEM IS 0.00 MILES



SCALE 0 1/2 1 MILE  
 ONE INCH EQUALS 3000 FEET

PRIMARY  
 P-448 SOUTH CREIGHTON ROAD - 6.90 MILES

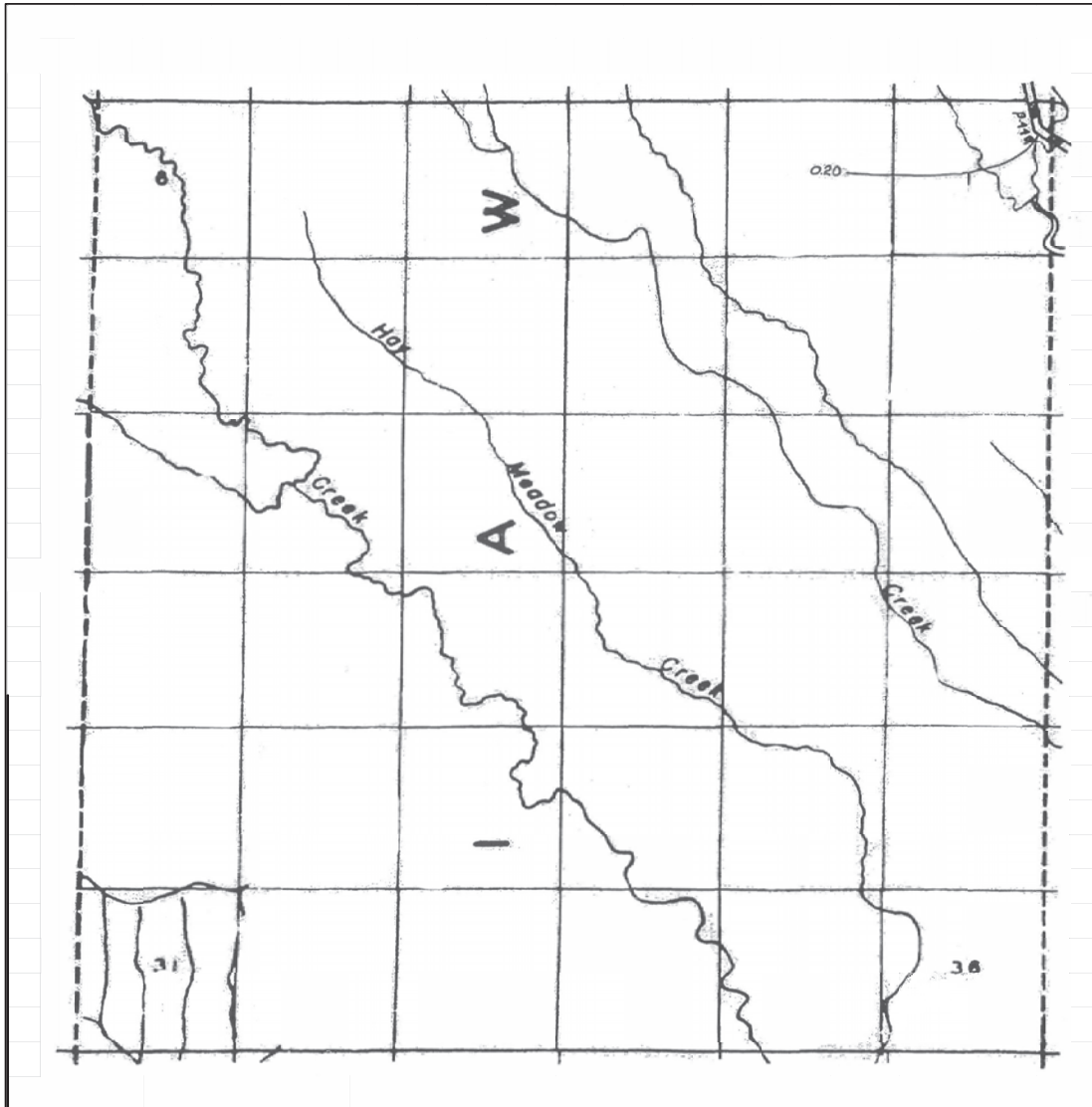
LOCAL  
 NUMBER OF ROAD  
 LENGTH IN MILES - TO THE NEAREST 1/100

Certification Map  
 of  
 TOWNSHIP HIAWATHA  
 SECTION \_\_\_\_\_ T. 45N R. 16W  
 COUNTY SCHOOLCRAFT - 75

Schoolcraft County Road Commission  
 Certified December 31, 2021

Prepared By: Ian Stampfly - County Highway Engineer  
 Schoolcraft County Road Commission

SEE MAP 13



SEE MAP 23

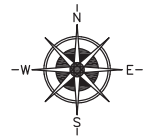
SEE MAP 15

LEGEND

- COUNTY LINE
- CORPORATE LIMITS
- STATE TRUNKLINE
- COUNTY PRIMARY
- COUNTY LOCAL
- ADJACENT COUNTY
- CITY OR VILLAGE
- STREET

PRIMARY ROAD SYSTEM IS 0.20 MILES

LOCAL ROAD SYSTEM IS 0.00 MILES



SCALE 0 1 MILE  
ONE INCH EQUALS 3000 FEET

SEE MAP 31

PRIMARY

P-448 SOUTH CREIGHTON ROAD - 0.20 MILES

LOCAL

NUMBER OF ROAD

LENGTH IN MILES - TO THE NEAREST 1/100

Certification Map  
of

TOWNSHIP HIAWATHA

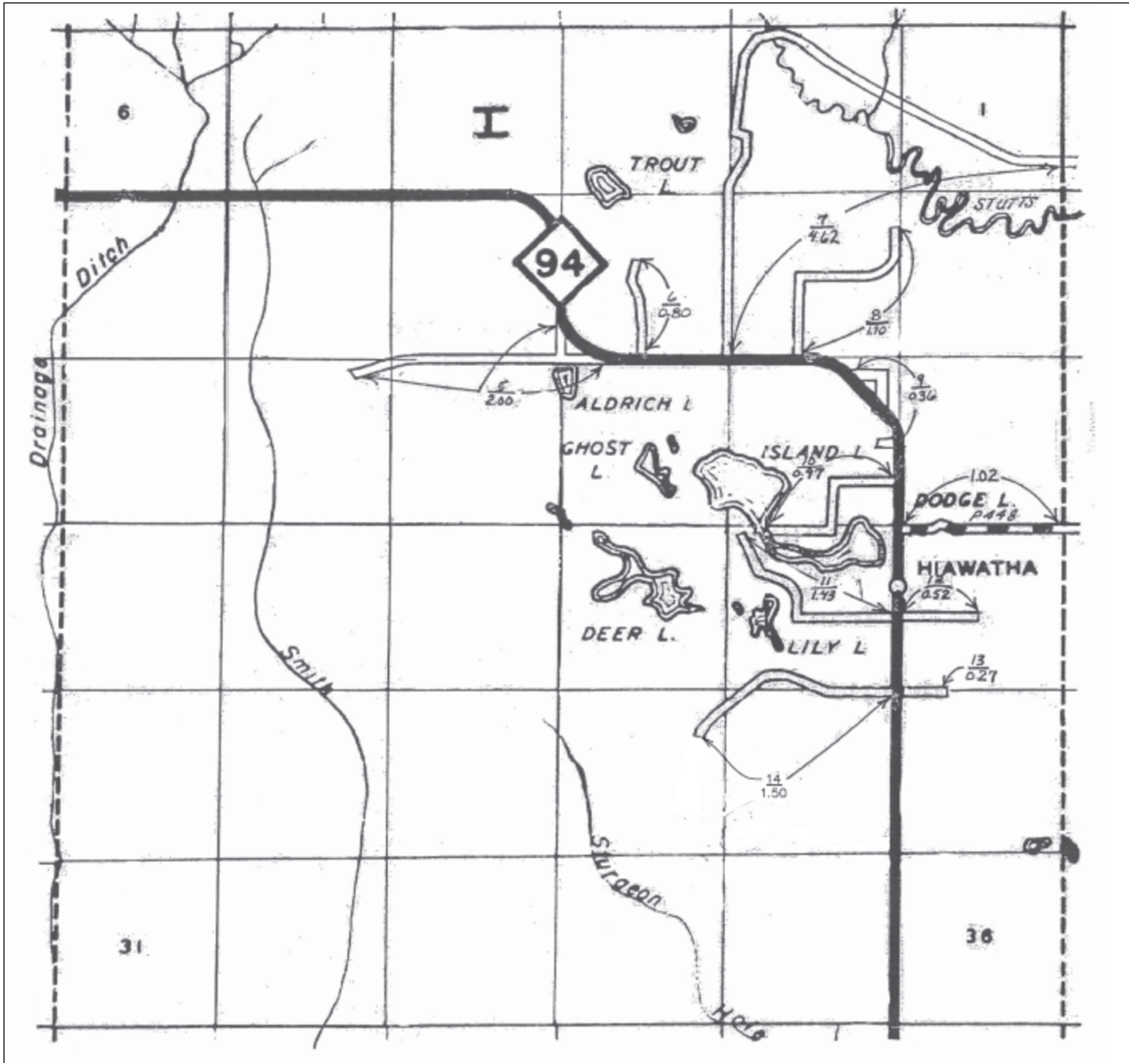
SECTION \_\_\_\_\_ T. 44N R. 16W

COUNTY SCHOOLCRAFT - 75

Schoolcraft County Road Commission  
Certified December 31, 2021

Prepared By: Ian Stampfly - County Highway Engineer  
Schoolcraft County Road Commission

SEE MAP 14



SEE MAP 16

LEGEND

COUNTY LINE	-----
CORPORATE LIMITS	-----
STATE TRUNKLINE	=====
COUNTY PRIMARY	=====
COUNTY LOCAL	=====
ADJACENT COUNTY	=====
CITY OR VILLAGE STREET	=====

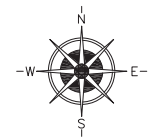
PRIMARY ROAD SYSTEM IS 1.02 MILES  
 LOCAL ROAD SYSTEM IS 13.57 MILES

PRIMARY

P-448 SMITH LAKE ROAD - 1.02 MILES

LOCAL

- 5. HYLAND ROAD - 2.0 MILES
- 6. ALDRICH ROAD - 0.80 MILES
- 7. SOUTHSIDE ROAD - 4.62 MILES
- 8. HENDRICKSON ROAD - 1.10 MILES
- 9. RUGGLES ROAD - 0.36 MILES
- 10. ISLAND LAKE ROAD - 0.97 MILES
- 11. DODGE LAKE ROAD - 1.43 MILES
- 12. BROWN ROAD - 0.52 MILES
- 13. WOOD ROAD - 0.27 MILES
- 14. HIAWATHA STATION ROAD - 1.50 MILES



SCALE 0 1/2 1 MILE  
 ONE INCH EQUALS 3000 FEET

NUMBER OF ROAD

LENGTH IN MILES - TO THE NEAREST 1/100

SEE MAP 24

SEE MAP 32

Certification Map  
 of

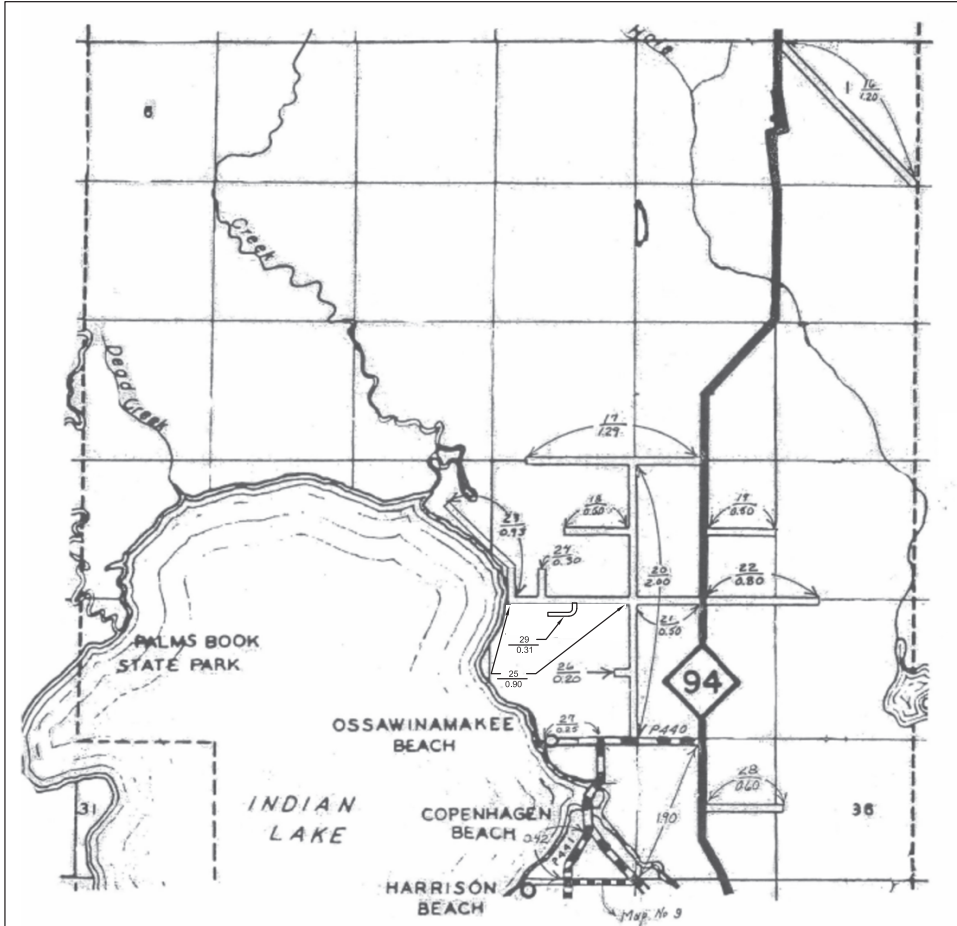
TOWNSHIP HIAWATHA  
 SECTION \_\_\_\_\_ T. 43N R. 16W  
 COUNTY SCHOOLCRAFT - 75

Schoolcraft County Road Commission  
 Certified December 31, 2021

Prepared By: Ian Stampfly - County Highway Engineer  
 Schoolcraft County Road Commission



SEE MAP 15



SEE MAP 19

SEE MAP 25

SEE MAP 33

**LEGEND**

COUNTY LINE	-----
CORPORATE LIMITS	-----
STATE TRUNKLINE	=====
COUNTY PRIMARY	=====
COUNTY LOCAL	=====
ADJACENT COUNTY	=====
CITY OR VILLAGE STREET	=====

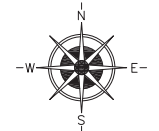
PRIMARY ROAD SYSTEM IS 2.32 MILES  
 LOCAL ROAD SYSTEM IS 10.28 MILES

**PRIMARY**

- P-440 STATE ROAD - 1.90 MILES
- P-441 DANIELSON ROAD - 0.42 MILES

**LOCAL**

- 16. HIGH ROLLWAYS - 1.20 MILES
- 17. FREEMAN ROAD - 1.29 MILES
- 18. BLANFORD ROAD - 0.50 MILES
- 19. ADAMS ROAD - 0.50 MILES
- 20. BECKMAN ROAD - 2.00 MILES
- 21. DAWSON ROAD - 0.50 MILES
- 22. WHITMAN ROAD - 0.80 MILES
- 23. WAWAUSHNOSH DR - 0.93 MILES
- 24. FISETTE ROAD - 0.30 MILES
- 25. DAWSON ROAD - 0.90 MILES
- 26. TAYLOR ROAD - 0.20 MILES
- 27. LEDUC ROAD - 0.25 MILES
- 28. SWANSON ROAD - 0.60 MILES
- 29. GOLF COURSE ROAD - 0.31 MILES



SCALE 0 1/2 1 MILE  
 ONE INCH EQUALS 3000 FEET

**NUMBER OF ROAD**

LENGTH IN MILES - TO THE NEAREST 1/100

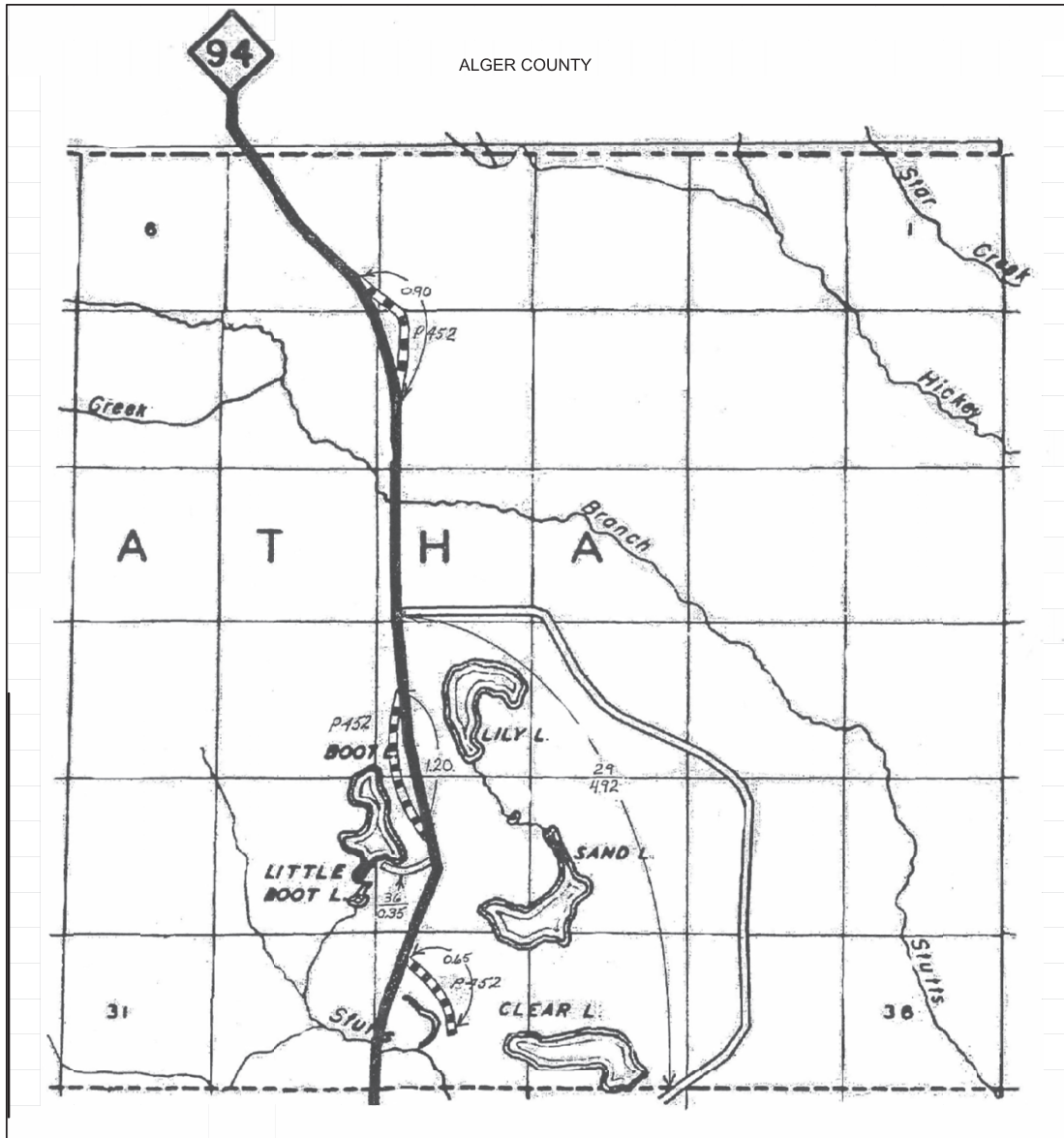
NOTE: SEE MAP 20 FOR OSSAWINAMAKEE RESORT SUBDIVISION.

Certification Map of

TOWNSHIP HIAWATHA  
 SECTION \_\_\_\_\_ T. 42N R. 16W  
 COUNTY SCHOOLCRAFT - 75

Schoolcraft County Road Commission  
 Certified December 31, 2021

Prepared By: Ian Stampfly - County Highway Engineer  
 Schoolcraft County Road Commission



ALGER COUNTY

A T H A

31

36

SEE MAP 23

SEE MAP 18

SEE MAP 13

LEGEND

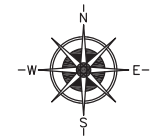
COUNTY LINE	-----
CORPORATE LIMITS	-----
STATE TRUNKLINE	=====
COUNTY PRIMARY	=====
COUNTY LOCAL	=====
ADJACENT COUNTY	=====
CITY OR VILLAGE STREET	=====

PRIMARY ROAD SYSTEM IS 2.75 MILES  
 LOCAL ROAD SYSTEM IS 5.27 MILES

**PRIMARY**  
 P-452 OLD M-94 - 2.75 MILES

**LOCAL**  
 29, CLEAR LAKE ROAD - 4.92 MILES  
 36, BOOT LAKE COURT - 0.35 MILES

**NUMBER OF ROAD**  
 LENGTH IN MILES - TO THE NEAREST 1/100



SCALE 0 1/2 1 MILE  
 ONE INCH EQUALS 3000 FEET

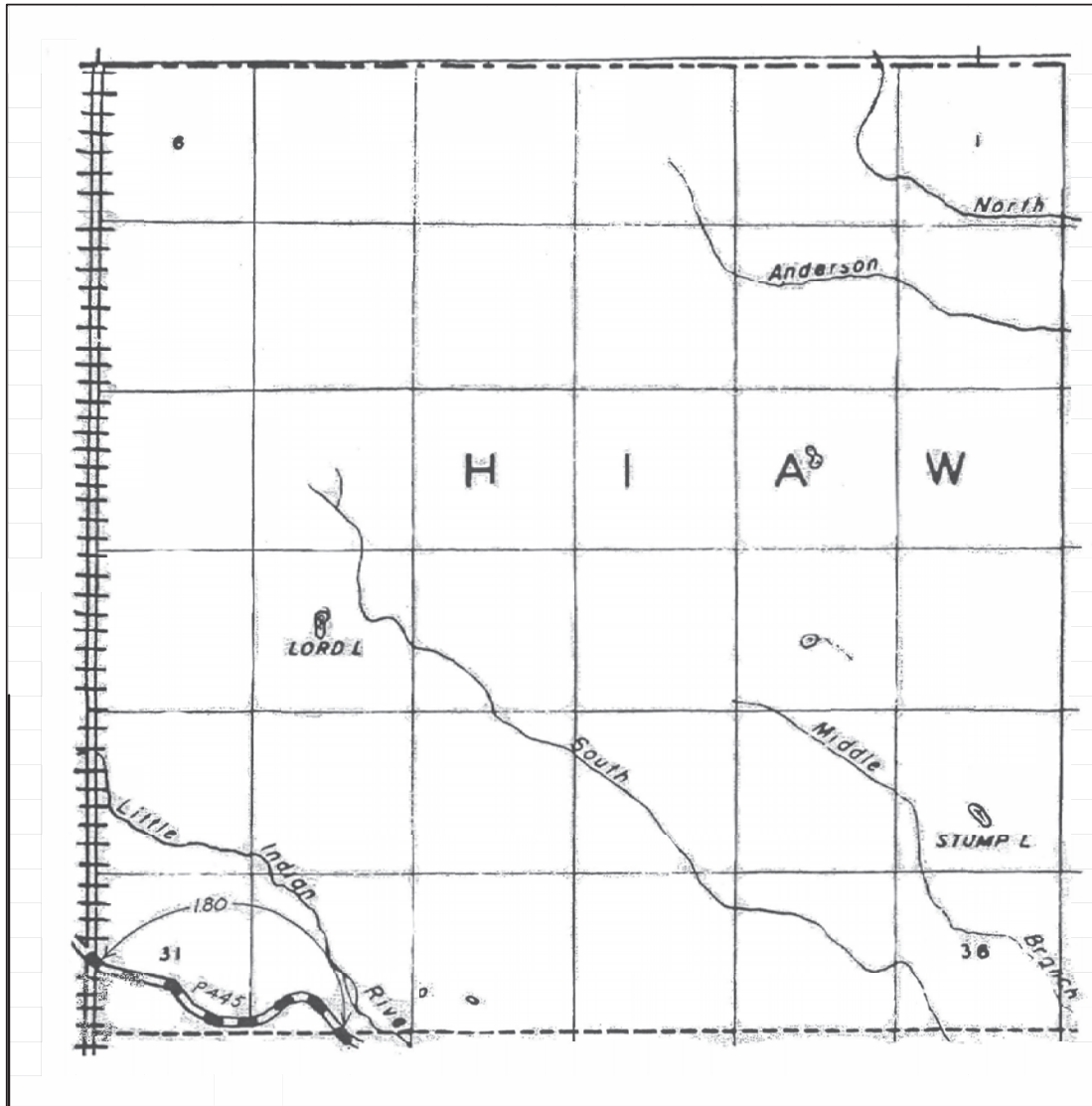
Certification Map  
 of  
 TOWNSHIP HIAWATHA  
 SECTION \_\_\_\_\_ T. 45N R. 17W  
 COUNTY SCHOOLCRAFT - 75

Schoolcraft County Road Commission  
 Certified December 31, 2021

Prepared By: Ian Stampfly - County Highway Engineer  
 Schoolcraft County Road Commission



ALGER COUNTY



ALGER COUNTY

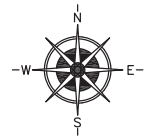
SEE MAP 17

SEE MAP 26

LEGEND

- COUNTY LINE
- CORPORATE LIMITS
- STATE TRUNKLINE
- COUNTY PRIMARY
- COUNTY LOCAL
- ADJACENT COUNTY
- CITY OR VILLAGE
- STREET

PRIMARY ROAD SYSTEM IS 1.80 MILES  
 LOCAL ROAD SYSTEM IS 0.00 MILES



SCALE 0 1 MILE  
 ONE INCH EQUALS 3000 FEET

PRIMARY

P-445 KENTUCKY TRAIL - 1.80 MILES

LOCAL

NUMBER OF ROAD

LENGTH IN MILES - TO THE NEAREST 1/100

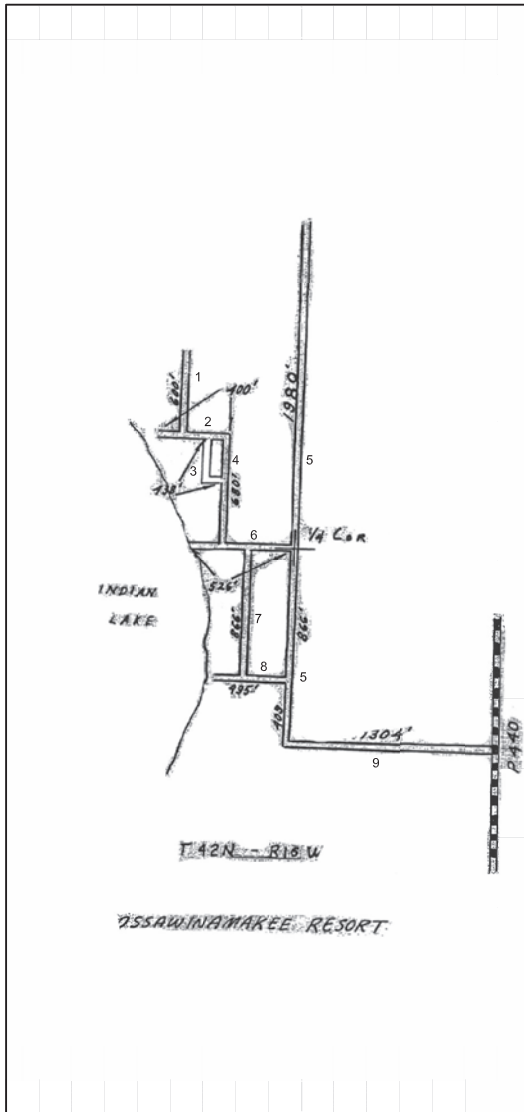
Certification Map  
of

TOWNSHIP HIAWATHA  
 SECTION \_\_\_\_\_ T. 45N R. 18W  
 COUNTY SCHOOLCRAFT - 75

Schoolcraft County Road Commission  
 Certified December 31, 2021

Prepared By: Ian Stampfy - County Highway Engineer  
 Schoolcraft County Road Commission

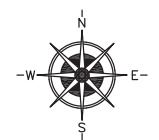




LEGEND

COUNTY LINE	-----
CORPORATE LIMITS	-----
STATE TRUNKLINE	=====
COUNTY PRIMARY	=====
COUNTY LOCAL	=====
ADJACENT COUNTY	=====
CITY OR VILLAGE STREET	=====

PRIMARY ROAD SYSTEM IS 0.00 MILES  
 LOCAL ROAD SYSTEM IS 1.62 MILES



- LOCAL**
1. MARY STREET - 600 FEET
  2. NICKELSON STREET - 400 FEET
  3. CEDAR STREET - 438 FEET
  4. PINE STREET - 680 FEET
  5. BIRCH STREET - 0.60 MILES (3149 FEET)
  6. MAPLE STREET - 526 FEET
  7. OAK STREET - 866 FEET
  8. ELM STREET - 495 FEET
  9. ARROWHEAD ROAD - 0.25 MILES (1304 FEET)



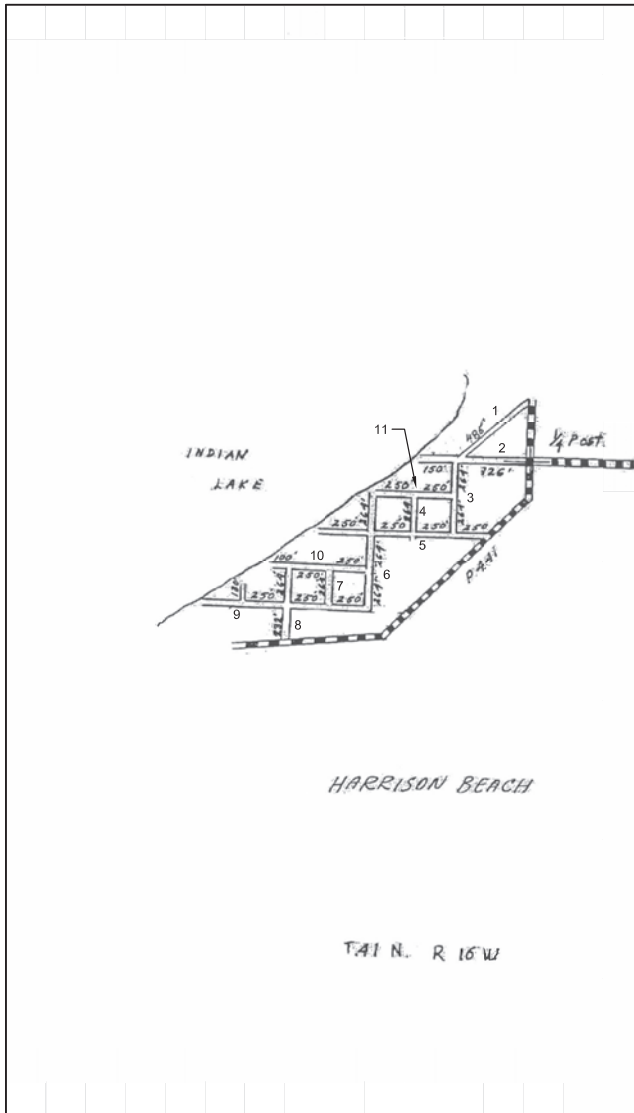
**NUMBER OF ROAD**  
 LENGTH IN MILES - TO THE NEAREST 1/100

NOTE: SEE MAP 16 FOR SURROUNDING ROADS.

Certification Map  
 of  
 TOWNSHIP HIAWATHA  
 SECTION 27 T. 42N R. 16W  
 COUNTY SCHOOLCRAFT - 75

Schoolcraft County Road Commission  
 Certified December 31, 2021

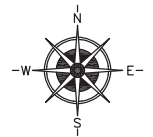
Prepared By: Ian Stampfly - County Highway Engineer  
 Schoolcraft County Road Commission



LEGEND

COUNTY LINE	-----
CORPORATE LIMITS	-----
STATE TRUNKLINE	=====
COUNTY PRIMARY	=====
COUNTY LOCAL	=====
ADJACENT COUNTY	=====
CITY OR VILLAGE STREET	=====

PRIMARY ROAD SYSTEM IS 0.00 MILES  
 LOCAL ROAD SYSTEM IS 1.19 MILES



SCALE 0 600 1200 FEET  
 ONE INCH EQUALS 600 FEET

**LOCAL**

1. INDIAN TRAIL - 485 FEET
2. MANISTIQUE AVENUE - 876 FEET
3. 3RD STREET - 528 FEET
4. 4TH STREET - 264 FEET
5. HARRISON AVENUE - 1000 FEET
6. 5TH STREET - 792 FEET
7. 6TH STREET - 264 FEET
8. 7TH STREET - 496 FEET
9. WASHINGTON AVENUE - 1000 FEET
10. CLEVELAND AVENUE - 600 FEET
11. HIAWATHA AVENUE - 500 FEET

**NUMBER OF ROAD**  
 LENGTH IN MILES - TO THE NEAREST 1/100

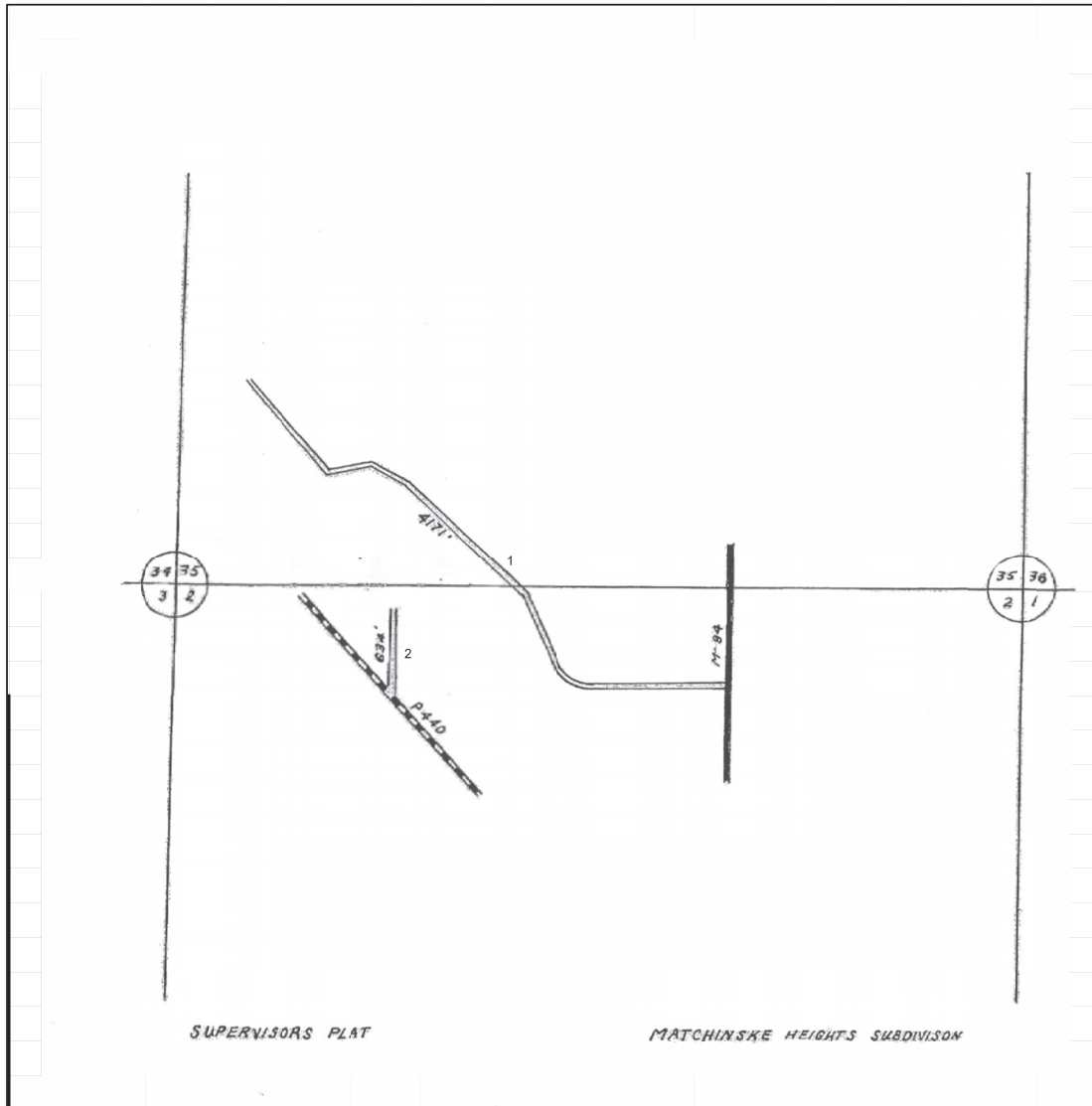
NOTE: SEE MAP 19 FOR SURROUNDING  
 ROADS.

Certification Map  
 of

TOWNSHIP HIAWATHA  
 SECTION 3 T. 41N R. 16W  
 COUNTY SCHOOLCRAFT - 75

Schoolcraft County Road Commission  
 Certified December 31, 2021

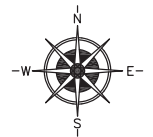
Prepared By: Ian Stampfly - County Highway Engineer  
 Schoolcraft County Road Commission



LEGEND

COUNTY LINE	-----
CORPORATE LIMITS	-----
STATE TRUNKLINE	=====
COUNTY PRIMARY	=====
COUNTY LOCAL	=====
ADJACENT COUNTY	=====
CITY OR VILLAGE STREET	=====

PRIMARY ROAD SYSTEM IS 0.00 MILES  
 LOCAL ROAD SYSTEM IS 0.91 MILES



- LOCAL
1. EVERGREEN ROAD - 0.79 MILES (4171 FEET)
  2. CARLSON ROAD - 634 FEET

NUMBER OF ROAD  
 LENGTH IN MILES - TO THE NEAREST 1/100

NOTE: SEE MAP 19 FOR SURROUNDING  
 ROADS.

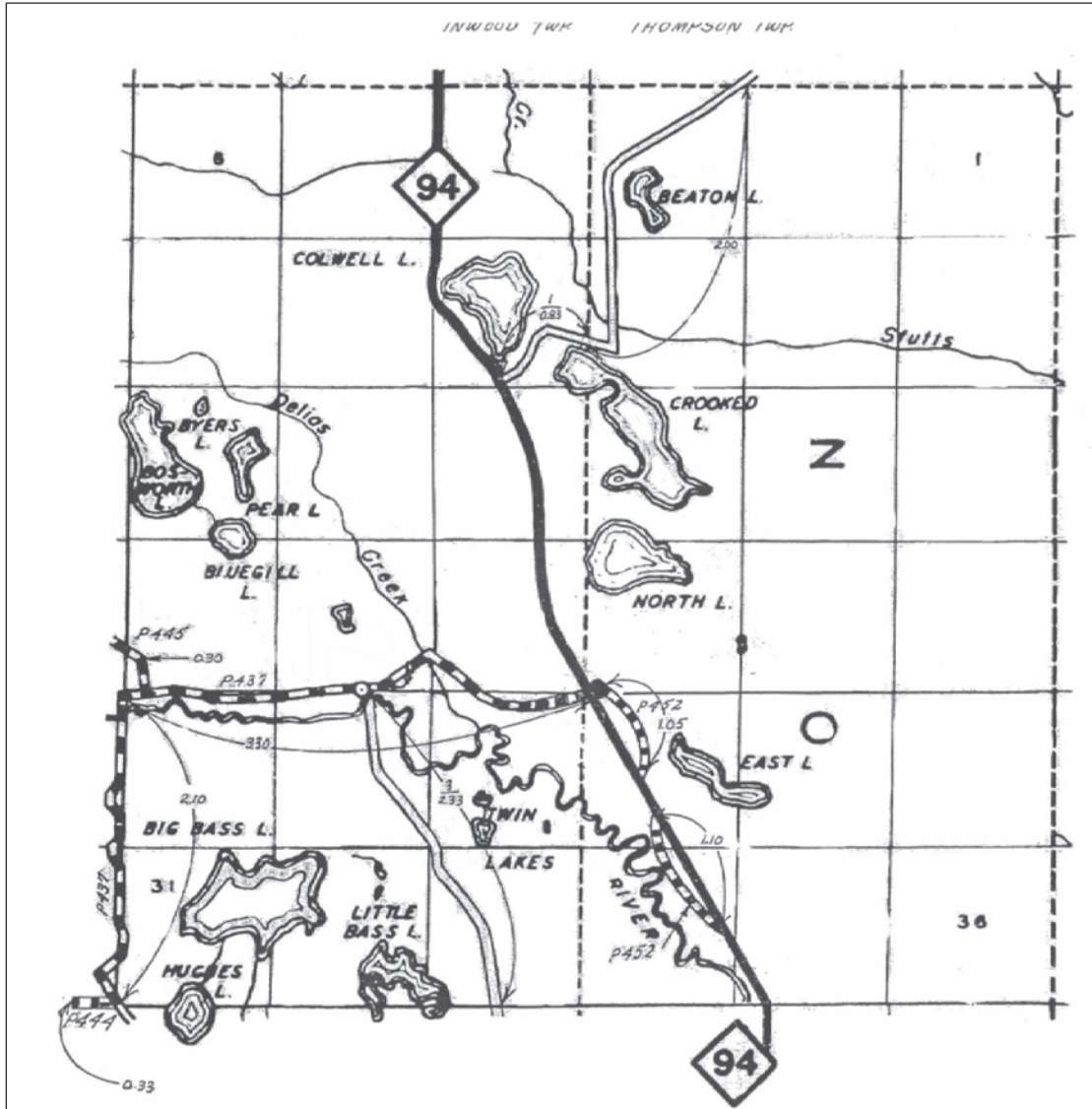


Certification Map  
 of  
 TOWNSHIP HIAWATHA  
 SECTION 2 T. 41N R. 16W  
 SECTION 35 T. 42N R. 16W  
 COUNTY SCHOOLCRAFT - 75

Schoolcraft County Road Commission  
 Certified December 31, 2021

Prepared By: Ian Stampfly - County Highway Engineer  
 Schoolcraft County Road Commission

SEE MAP 17



SEE MAP 24

LEGEND

- COUNTY LINE
- CORPORATE LIMITS
- STATE TRUNKLINE
- COUNTY PRIMARY
- COUNTY LOCAL
- ADJACENT COUNTY
- CITY OR VILLAGE STREET

PRIMARY ROAD SYSTEM IS 8.18 MILES  
 LOCAL ROAD SYSTEM IS 5.16 MILES

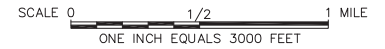
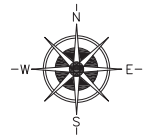
**PRIMARY (INWOOD)**  
 P-437 THUNDER LAKE ROAD - 5.40 MILES  
 P-444 DELTA CR-440 - 0.33 MILES  
 P-445 KENTUCKY TRAIL - 0.30 MILES

**PRIMARY (THOMPSON)**  
 P-452 OLD M-94 - 2.15 MILES

**LOCAL (INWOOD)**  
 1. CLEAR LAKE ROAD - 0.83 MILES  
 3. BASS LAKE ROAD - 2.33 MILES

**LOCAL (THOMPSON)**  
 1. CLEAR LAKE ROAD - 2.00 MILES

**NUMBER OF ROAD**  
 LENGTH IN MILES - TO THE NEAREST 1/100



SEE MAP 26

SEE MAP 14

Certification Map of

TOWNSHIP INWOOD / THOMPSON  
 SECTION \_\_\_\_\_ T. 44N R. 17W  
 COUNTY SCHOOLCRAFT - 75

Schoolcraft County Road Commission  
 Certified December 31, 2021

Prepared By: Ian Stampfly - County Highway Engineer  
 Schoolcraft County Road Commission

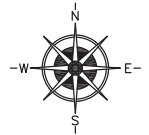


SEE MAP 23

LEGEND

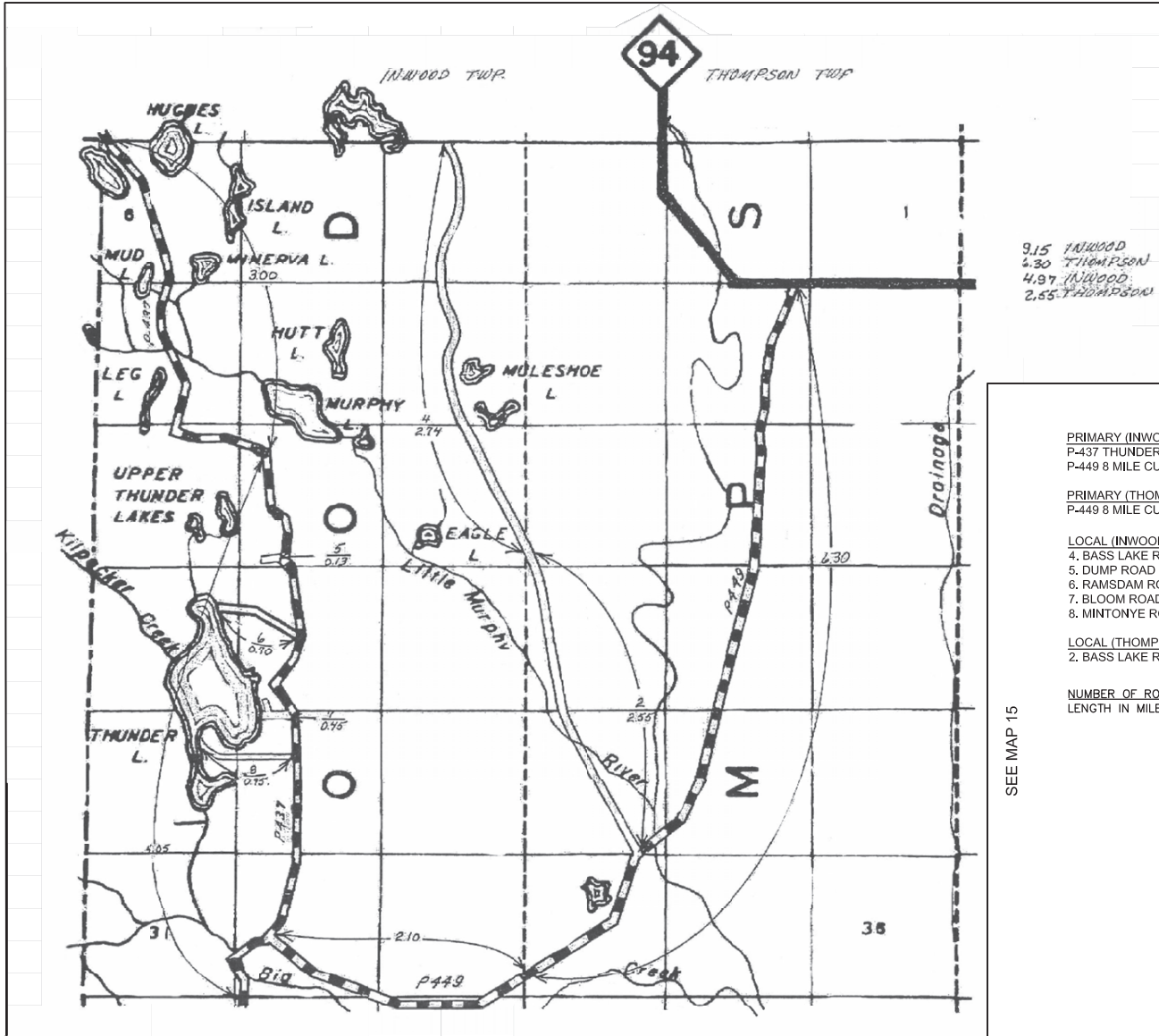
- COUNTY LINE
- CORPORATE LIMITS
- STATE TRUNKLINE
- COUNTY PRIMARY
- COUNTY LOCAL
- ADJACENT COUNTY
- CITY OR VILLAGE STREET

PRIMARY ROAD SYSTEM IS 15.45 MILES  
 LOCAL ROAD SYSTEM IS 7.52 MILES



SCALE 0 1 MILE  
 ONE INCH EQUALS 3000 FEET

DELTA COUNTY



9.15 INWOOD  
 4.30 THOMPSON  
 4.97 INWOOD  
 2.65 THOMPSON

**PRIMARY (INWOOD)**  
 P-437 THUNDER LAKE ROAD - 7.05 MILES  
 P-449 8 MILE CUT ACROSS ROAD - 2.10 MILES

**PRIMARY (THOMPSON)**  
 P-449 8 MILE CUT ACROSS ROAD - 6.30 MILES

**LOCAL (INWOOD)**  
 4. BASS LAKE ROAD - 2.74 MILES  
 5. DUMP ROAD - 0.13 MILES  
 6. RAMSDAM ROAD - 0.70 MILES  
 7. BLOOM ROAD - 0.45 MILES  
 8. MINTONYE ROAD - 0.95 MILES

**LOCAL (THOMPSON)**  
 2. BASS LAKE ROAD - 2.55 MILES

**NUMBER OF ROAD**  
 LENGTH IN MILES - TO THE NEAREST 1/100

SEE MAP 15

Certification Map of

TOWNSHIP INWOOD / THOMPSON  
 SECTION        T. 43N R. 17W  
 COUNTY SCHOOLCRAFT - 75

Schoolcraft County Road Commission  
 Certified December 31, 2021

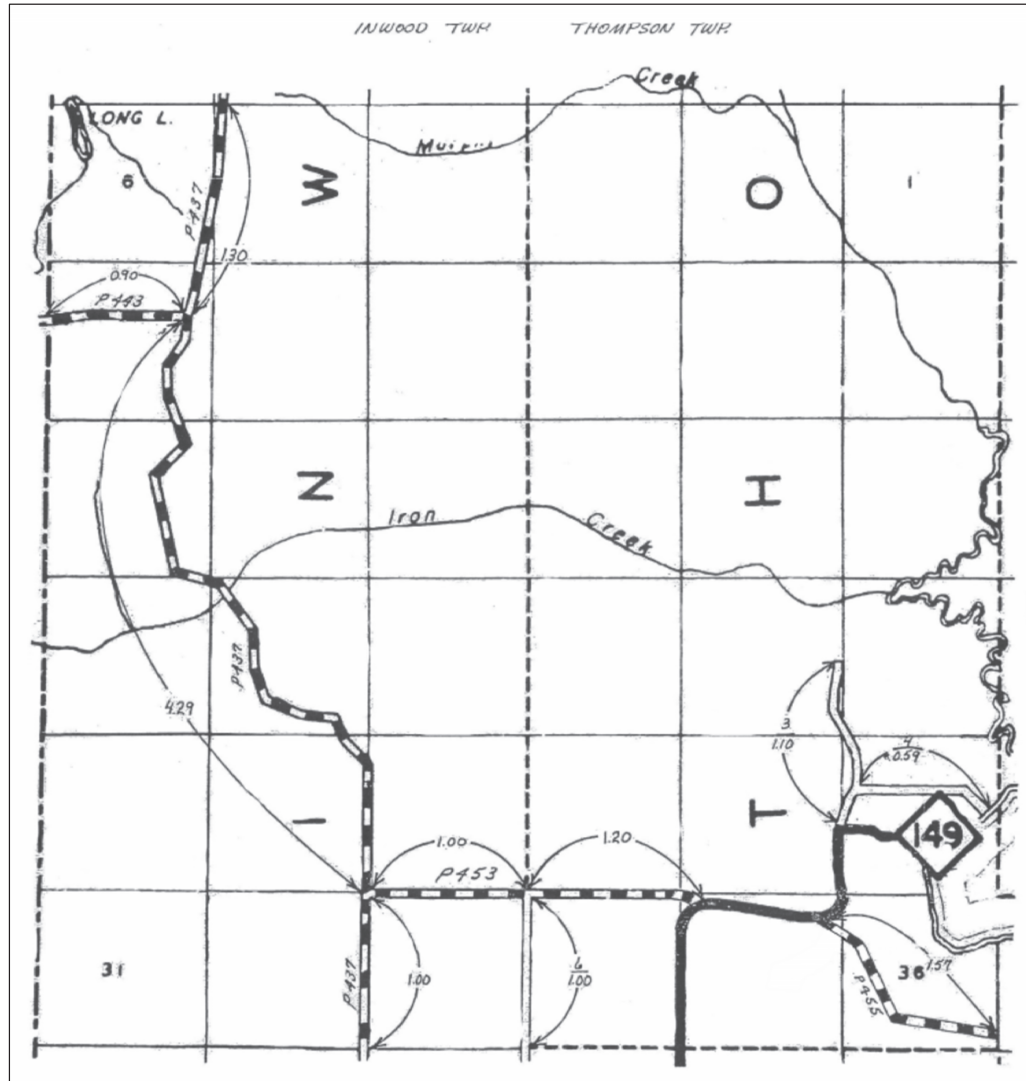
Prepared By: Ian Stampflly - County Highway Engineer  
 Schoolcraft County Road Commission

SEE MAP 25



SEE MAP 17

DELTA COUNTY



SEE MAP 27

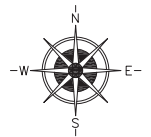
SEE MAP 19

LEGEND

- COUNTY LINE
- CORPORATE LIMITS
- STATE TRUNKLINE
- COUNTY PRIMARY
- COUNTY LOCAL
- ADJACENT COUNTY
- CITY OR VILLAGE STREET

PRIMARY ROAD SYSTEM IS 11.26 MILES

LOCAL ROAD SYSTEM IS 2.69 MILES



SCALE 0 1 MILE  
ONE INCH EQUALS 3000 FEET

PRIMARY (INWOOD)

- P-437 THUNDER LAKE ROAD - 6.59 MILES
- P-443 CAMP 7 ROAD - 0.90 MILES
- P-453 MILLER ROAD - 1.00 MILES

PRIMARY (THOMPSON)

- P-453 MILLER ROAD - 1.20 MILES
- P-455 RILEY ROAD - 1.57 MILES

LOCAL (THOMPSON)

- 3. SAWMILL ROAD - 1.10 MILES
- 4. FISHINGSITE ROAD - 0.59 MILES
- 6. PETERSON ROAD - 1.00 MILES

NUMBER OF ROAD

LENGTH IN MILES - TO THE NEAREST 1/100

Certification Map of

TOWNSHIP INWOOD / THOMPSON

SECTION          T. 42N R. 17W

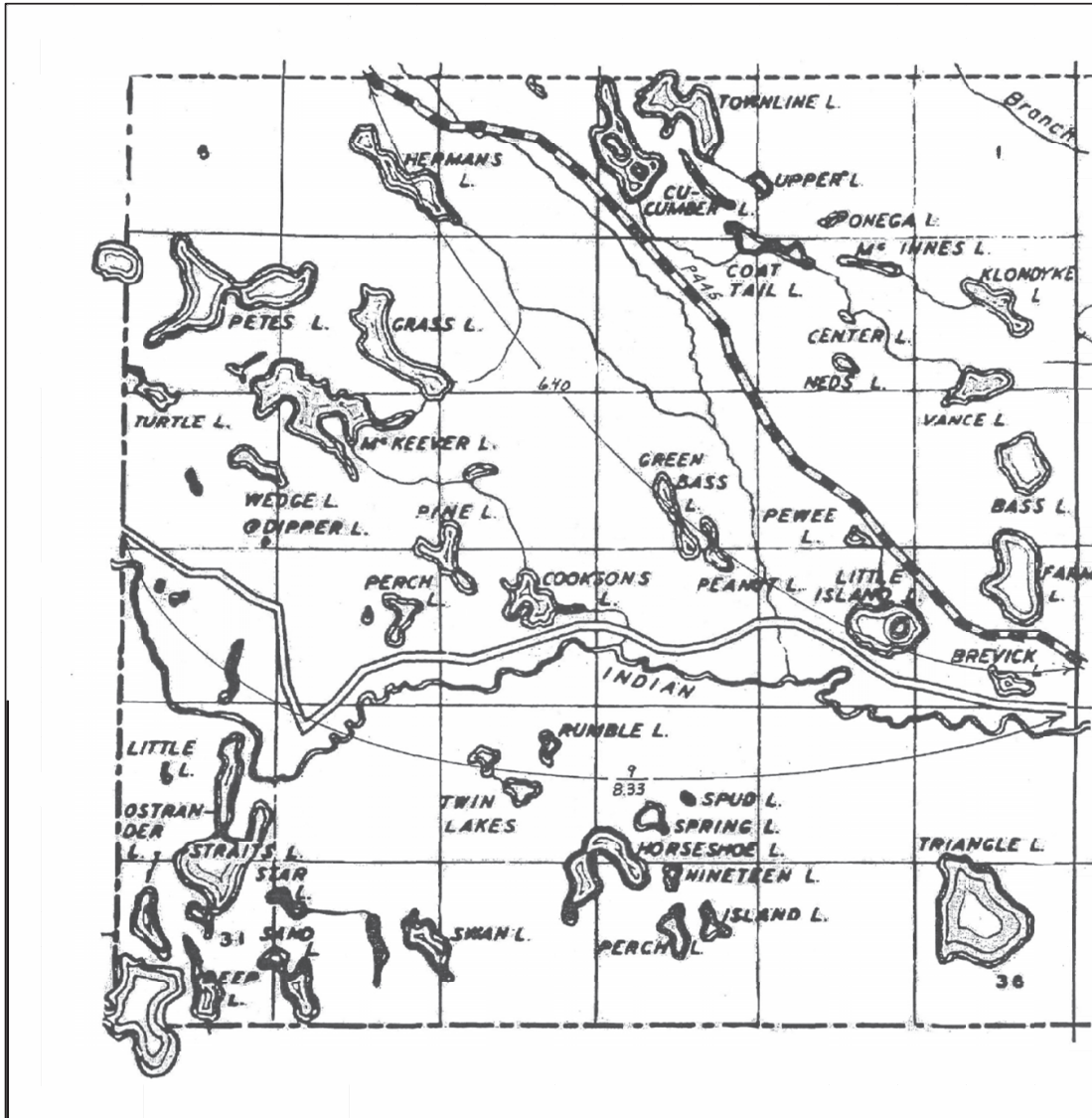
COUNTY SCHOOLCRAFT - 75

Schoolcraft County Road Commission  
Certified December 31, 2021

Prepared By: Ian Stampfly - County Highway Engineer  
Schoolcraft County Road Commission

SEE MAP 18

ALGER COUNTY



DELTA COUNTY

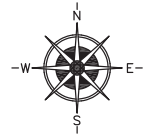
SEE MAP 23

LEGEND

- COUNTY LINE
- CORPORATE LIMITS
- STATE TRUNKLINE
- COUNTY PRIMARY
- COUNTY LOCAL
- ADJACENT COUNTY
- CITY OR VILLAGE STREET

PRIMARY ROAD SYSTEM IS 6.40 MILES

LOCAL ROAD SYSTEM IS 8.33 MILES



SCALE 0 1 MILE  
ONE INCH EQUALS 3000 FEET

PRIMARY  
P-445 KENTUCKY TRAIL - 6.40 MILES

LOCAL  
9. LITTLE INDIAN ROAD - 8.33 MILES

NUMBER OF ROAD  
LENGTH IN MILES - TO THE NEAREST 1/100

NOTE: SEE MAP 30 FOR OSTRANDER LAKE ROAD.

Certification Map  
of

TOWNSHIP INWOOD

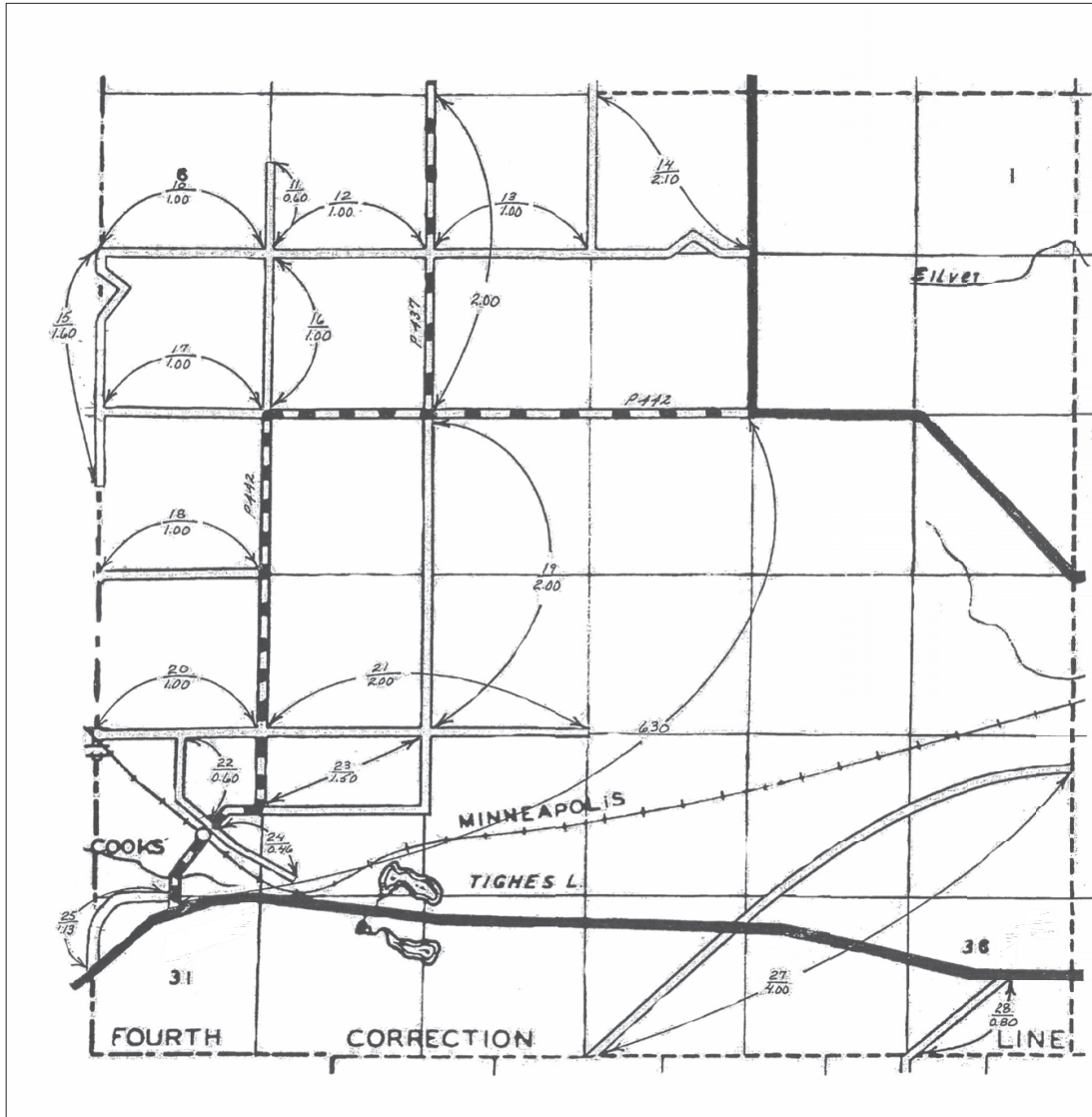
SECTION \_\_\_\_\_ T. 44N R. 18W

COUNTY SCHOOLCRAFT - 75

Schoolcraft County Road Commission  
Certified December 31, 2021

Prepared By: Ian Stampfly - County Highway Engineer  
Schoolcraft County Road Commission

SEE MAP 25



SEE MAP 47

LEGEND

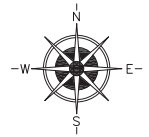
- COUNTY LINE
- CORPORATE LIMITS
- STATE TRUNKLINE
- COUNTY PRIMARY
- COUNTY LOCAL
- ADJACENT COUNTY
- CITY OR VILLAGE STREET

PRIMARY ROAD SYSTEM IS 8.30 MILES

LOCAL ROAD SYSTEM IS 23.79 MILES

**PRIMARY**  
 P-437 THUNDER LAKE ROAD - 2.0 MILES  
 P-442 OLD US-2 - 6.30 MILES

- LOCAL**
10. FIRE TOWER ROAD - 1.00 MILES
  11. FOX ROAD - 0.60 MILES
  12. WOLFE ROAD - 1.00 MILES
  13. TANQUAY ROAD - 1.00 MILES
  14. PETERSON ROAD - 2.10 MILES
  15. COUNTY LINE ROAD - 1.60 MILES
  16. POUPOUR ROAD - 1.00 MILES
  17. ADVENT ROAD - 1.00 MILES
  18. HASS ROAD - 1.00 MILES
  19. COOKS SCHOOL SOUTH ROAD - 2.00 MILES
  20. SPIELMACHER ROAD - 1.00 MILES
  21. DAVIDSON ROAD - 2.00 MILES
  22. SEGERSTROM ROAD - 0.60 MILES
  23. CEMETERY ROAD - 1.50 MILES
  24. DEPOT ROAD - 0.46 MILES
  25. OLD US-2 - 1.13 MILES
  27. CARLSON ROAD - 4.00 MILES
  28. FLODIN ROAD - 0.80 MILES



SCALE 0 1/2 1 MILE  
 ONE INCH EQUALS 3000 FEET

**NUMBER OF ROAD**  
 LENGTH IN MILES - TO THE NEAREST 1/100

NOTE: SEE MAP 28 FOR ENLARGED VIEW OF COOKS.

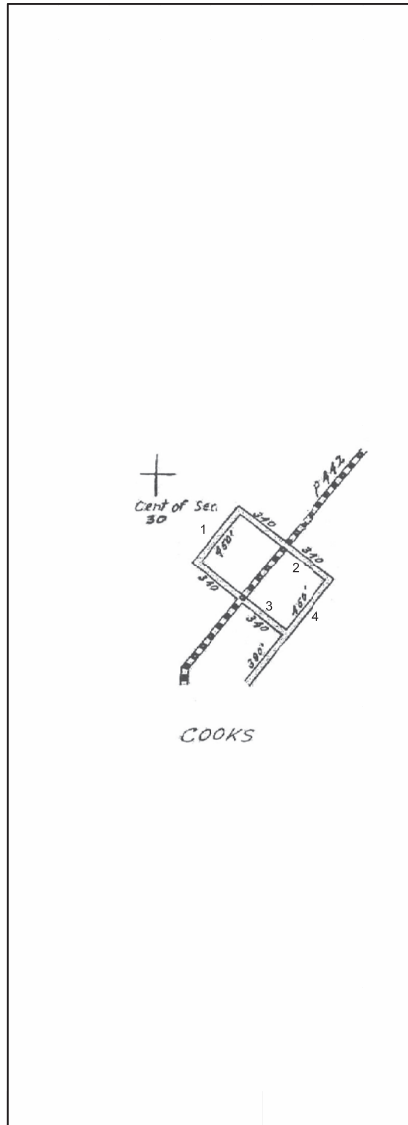
SEE MAP 19

Certification Map  
 of

TOWNSHIP INWOOD  
 SECTION        T. 41N R. 17W  
 COUNTY SCHOOLCRAFT - 75

Schoolcraft County Road Commission  
 Certified December 31, 2021

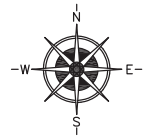
Prepared By: Ian Stampfly - County Highway Engineer  
 Schoolcraft County Road Commission



LEGEND

- COUNTY LINE -----
- CORPORATE LIMITS -----
- STATE TRUNKLINE -----
- COUNTY PRIMARY -----
- COUNTY LOCAL -----
- ADJACENT COUNTY -----
- CITY OR VILLAGE STREET -----

PRIMARY ROAD SYSTEM IS 0.00 MILES  
 LOCAL ROAD SYSTEM IS 0.50 MILES



SCALE 0 600 1200 FEET  
 ONE INCH EQUALS 600 FEET

LOCAL

- 1. MAPLE STREET - 1130 FEET
- 2. MARKDALE AVENUE - 340 FEET
- 3. FOREST STREET - 340 FEET
- 4. MILL STREET - 830 FEET

NUMBER OF ROAD

LENGTH IN MILES - TO THE NEAREST 1/100

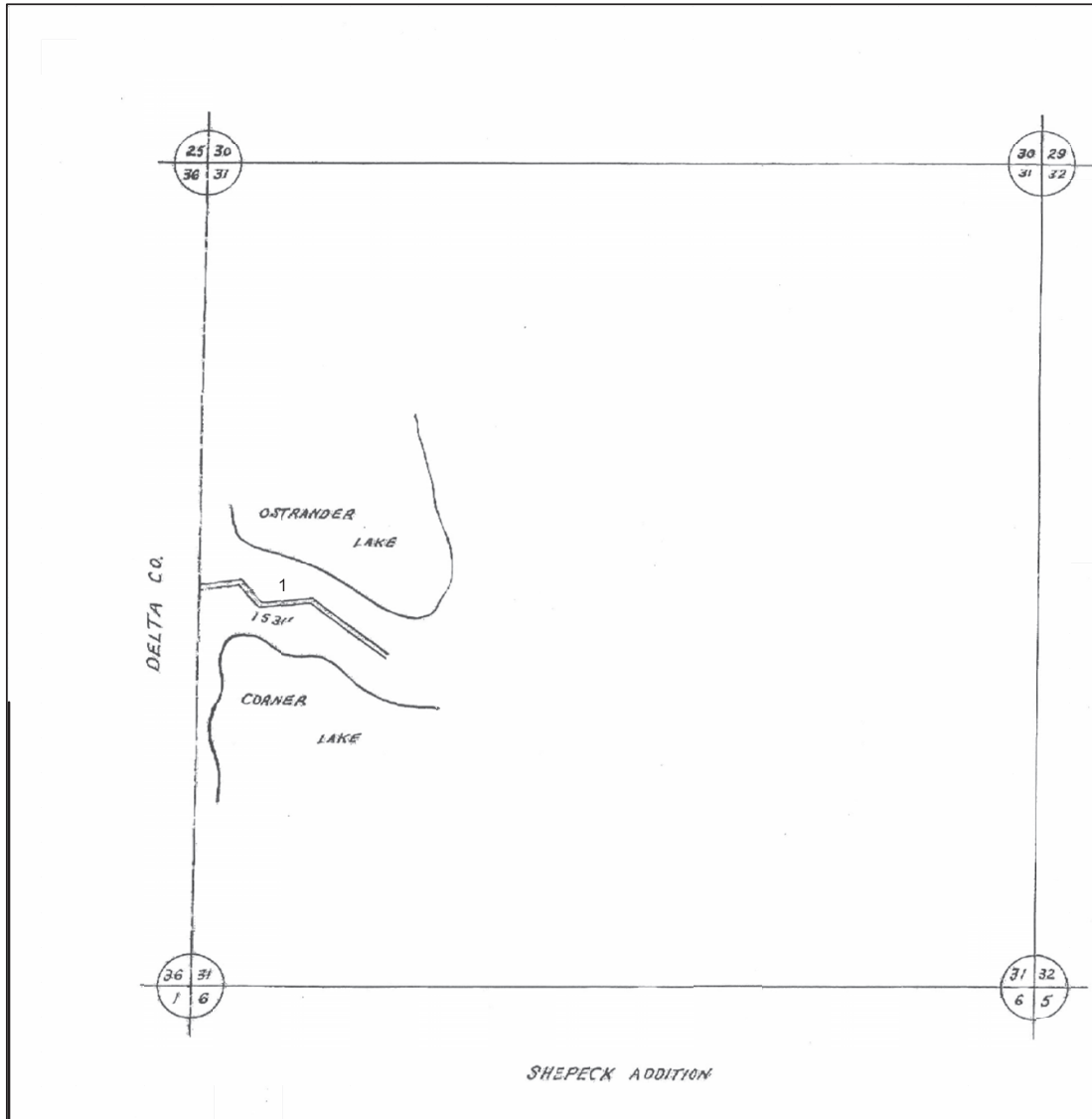
NOTE: SEE MAP 27 FOR SURROUNDING ROADS.

Certification Map of

TOWNSHIP INWOOD  
 SECTION 30 T. 41N R. 17W  
 COUNTY SCHOOLCRAFT - 75

Schoolcraft County Road Commission  
 Certified December 31, 2021

Prepared By: Ian Stampfly - County Highway Engineer  
 Schoolcraft County Road Commission

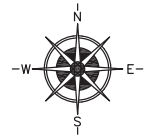


LEGEND

- COUNTY LINE
- CORPORATE LIMITS
- STATE TRUNKLINE
- COUNTY PRIMARY
- COUNTY LOCAL
- ADJACENT COUNTY
- CITY OR VILLAGE STREET

PRIMARY ROAD SYSTEM IS 0.00 MILES

LOCAL ROAD SYSTEM IS 0.29 MILES



LOCAL  
1. OSTRANDER LAKE ROAD - 1531 FEET

NUMBER OF ROAD  
LENGTH IN MILES - TO THE NEAREST 1/100

NOTE: SEE MAP 26 FOR SURROUNDING AREA AND ROADS.

Certification Map  
of

TOWNSHIP INWOOD

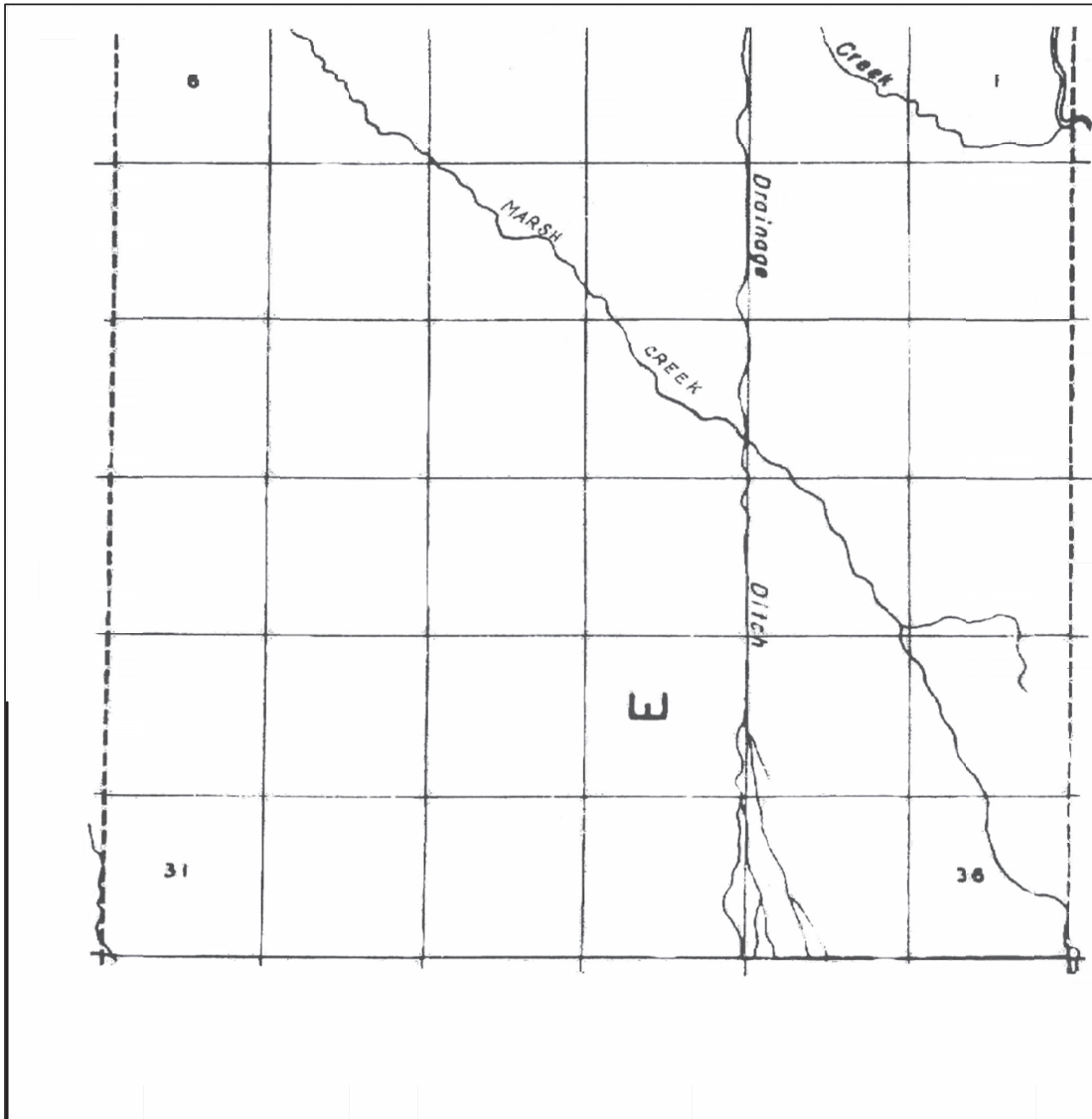
SECTION 31 T. 44N R. 18W

COUNTY SCHOOLCRAFT - 75

Schoolcraft County Road Commission  
Certified December 31, 2021

Prepared By: Ian Stampfly - County Highway Engineer  
Schoolcraft County Road Commission

SEE MAP 45



SEE MAP 13

SEE MAP 1

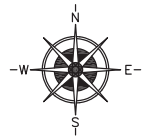
SEE MAP 31

LEGEND

- COUNTY LINE
- CORPORATE LIMITS
- STATE TRUNKLINE
- COUNTY PRIMARY
- COUNTY LOCAL
- ADJACENT COUNTY
- CITY OR VILLAGE
- STREET

PRIMARY ROAD SYSTEM IS 0.00 MILES

LOCAL ROAD SYSTEM IS 0.00 MILES



SCALE 0 1 MILE  
ONE INCH EQUALS 3000 FEET

Certification Map  
of

TOWNSHIP MANISTIQUE

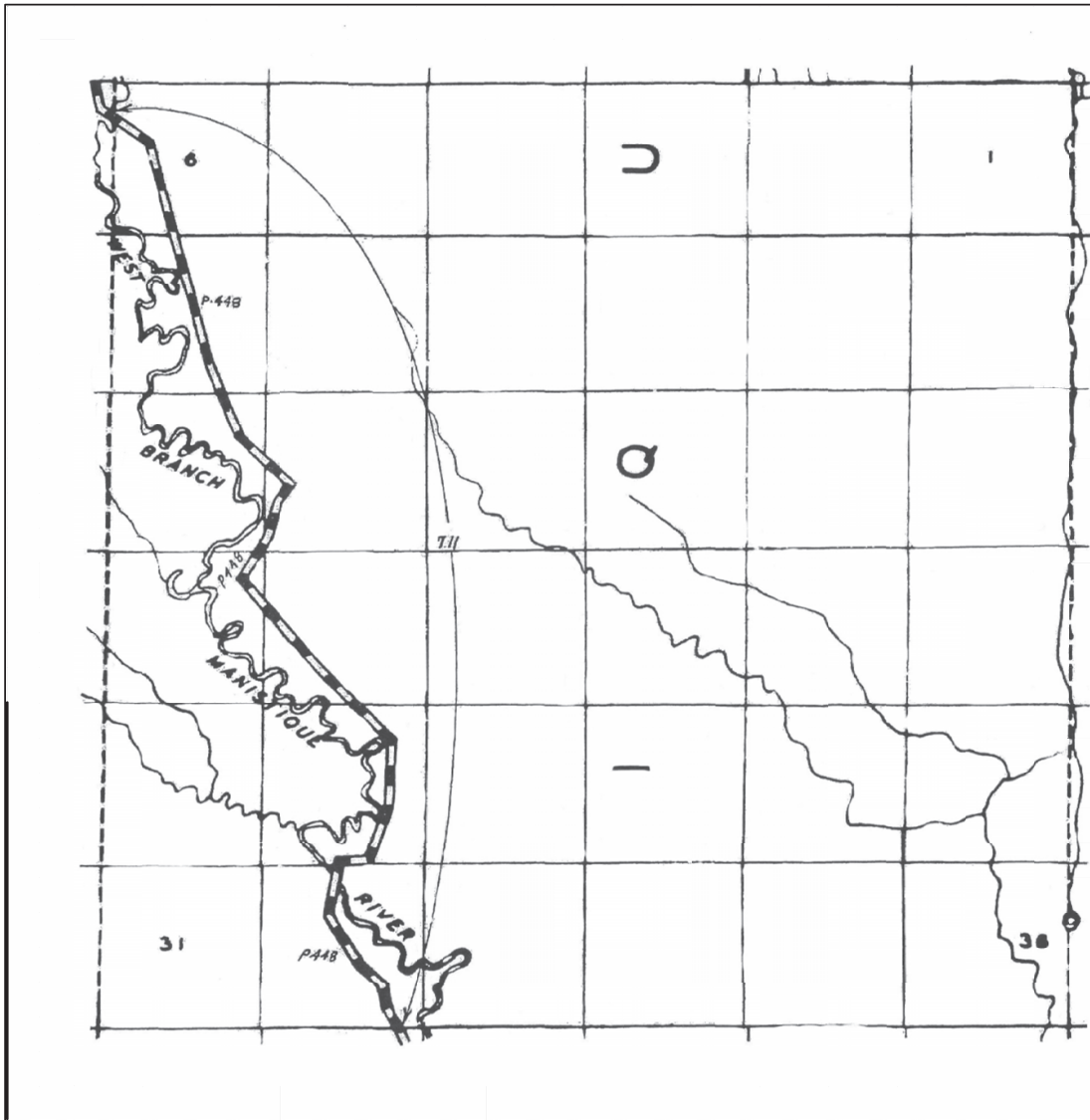
SECTION \_\_\_\_\_ T. 45N R. 15W

COUNTY SCHOOLCRAFT - 75

Schoolcraft County Road Commission  
Certified December 31, 2021

Prepared By: Ian Stamply - County Highway Engineer  
Schoolcraft County Road Commission

SEE MAP 30



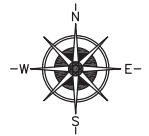
SEE MAP 14

SEE MAP 32

LEGEND

- COUNTY LINE -----
- CORPORATE LIMITS -----
- STATE TRUNKLINE -----
- COUNTY PRIMARY -----
- COUNTY LOCAL -----
- ADJACENT COUNTY -----
- CITY OR VILLAGE STREET -----

PRIMARY ROAD SYSTEM IS 7.11 MILES  
 LOCAL ROAD SYSTEM IS 0.00 MILES



SCALE 0 1/2 1 MILE  
 ONE INCH EQUALS 3000 FEET

PRIMARY  
 P-448 SOUTH CREIGHTON ROAD - 7.11 MILES

LOCAL  
 NUMBER OF ROAD  
 LENGTH IN MILES - TO THE NEAREST 1/100

SEE MAP 2

Certification Map  
 of

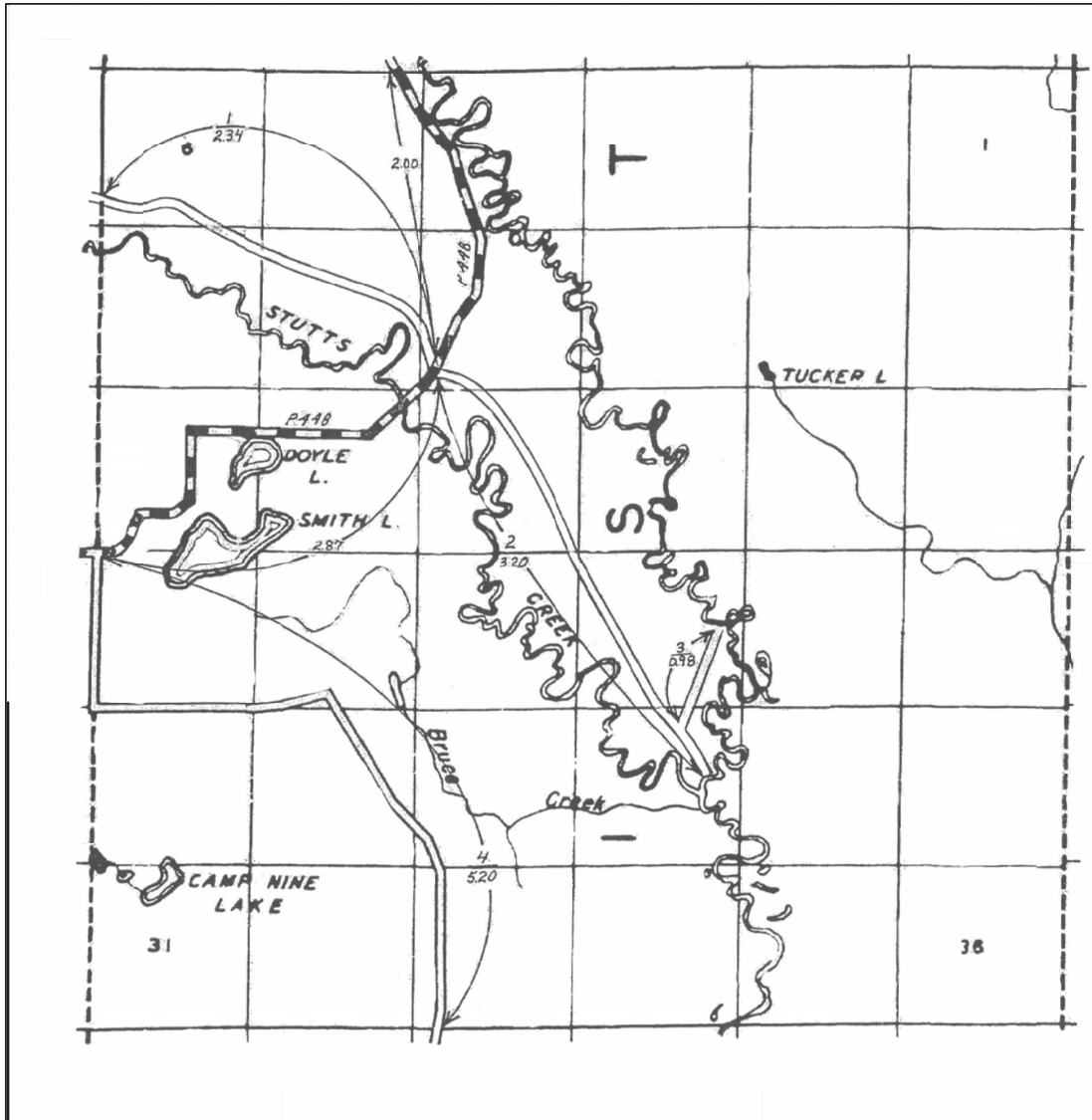
TOWNSHIP MANISTIQUE  
 SECTION \_\_\_\_\_ T. 44N R. 15W  
 COUNTY SCHOOLCRAFT - 75

Schoolcraft County Road Commission  
 Certified December 31, 2021

Prepared By: Ian Stampfly - County Highway Engineer  
 Schoolcraft County Road Commission



SEE MAP 31



SEE MAP 33

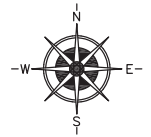
SEE MAP 15

SEE MAP 3

LEGEND

- COUNTY LINE
- CORPORATE LIMITS
- STATE TRUNKLINE
- COUNTY PRIMARY
- COUNTY LOCAL
- ADJACENT COUNTY
- CITY OR VILLAGE STREET

PRIMARY ROAD SYSTEM IS 4.87 MILES  
 LOCAL ROAD SYSTEM IS 11.72 MILES



SCALE 0 1 MILE  
 ONE INCH EQUALS 3000 FEET

PRIMARY  
 P-448 SOUTH CREIGHTON ROAD - 2.00 MILES  
 P-448 SMITH LAKE ROAD - 2.87 MILES

LOCAL  
 1. SOUTHSIDE ROAD - 2.34 MILES  
 2. SOUTH STUTTS ROAD - 3.20 MILES  
 3. BILLINGS ROAD - 0.98 MILES  
 4. HIGHROLLWAYS - 5.20 MILES

NUMBER OF ROAD  
 LENGTH IN MILES - TO THE NEAREST 1/100

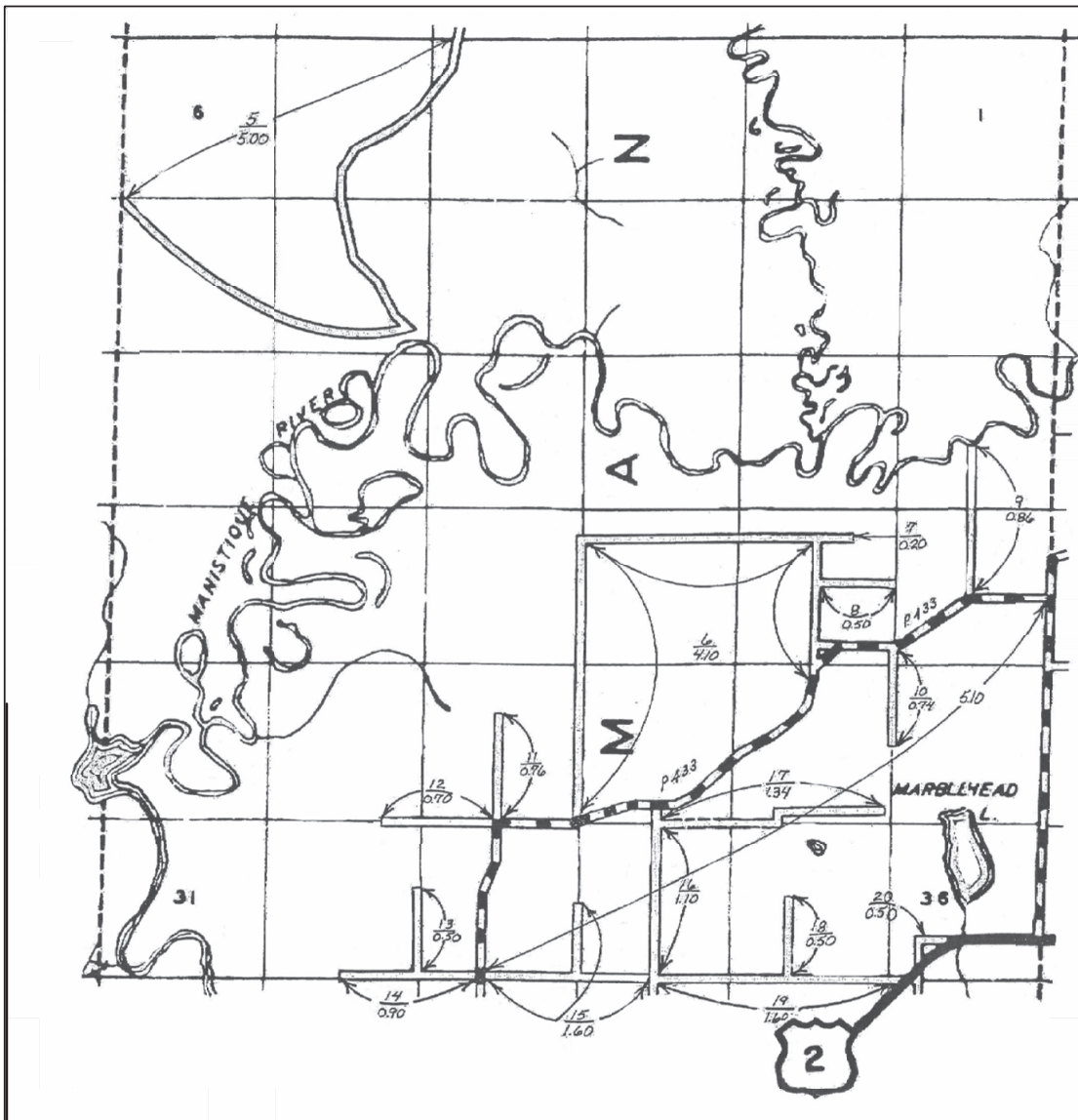
Certification Map  
 of

TOWNSHIP MANISTIQUE  
 SECTION \_\_\_\_\_ T. 43N R. 15W  
 COUNTY SCHOOLCRAFT - 75

Schoolcraft County Road Commission  
 Certified December 31, 2021

Prepared By: Ian Stampfly - County Highway Engineer  
 Schoolcraft County Road Commission

SEE MAP 32



SEE MAP 34

LEGEND

- COUNTY LINE
- CORPORATE LIMITS
- STATE TRUNKLINE
- COUNTY PRIMARY
- COUNTY LOCAL
- ADJACENT COUNTY
- CITY OR VILLAGE STREET

PRIMARY ROAD SYSTEM IS 5.10 MILES

LOCAL ROAD SYSTEM IS 20.90 MILES

PRIMARY

P-433 RIVER ROAD - 5.10 MILES

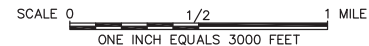
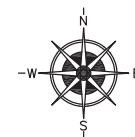
LOCAL

- 5. HIGHROLLWAYS ROAD - 5.00 MILES
- 6. KENDALL ROAD - 4.10 MILES
- 7. ARROWOOD ROAD - 0.20 MILES
- 8. COUNTY PIT ROAD - 0.50 MILES
- 9. MERWIN CREEK ROAD - 0.86 MILES
- 10. SCHNURER ROAD - 0.74 MILES
- 11. SCHARSTROM ROAD - 0.96 MILES
- 12. FAKETTY ROAD - 0.70 MILES
- 13. SHUNK ROAD - 0.50 MILES
- 14. KRUMMICH ROAD - 0.90 MILES
- 15. LINDEN ROAD & DIXON ROAD - 1.60 MILES
- 16. MURPHY ROAD - 1.10 MILES
- 17. BELGIUM ROAD - 1.34 MILES
- 18. GREGRASH ROAD - 0.50 MILES
- 19. LASICH ROAD - 1.60 MILES
- 20. GARDAPEE ROAD (OLD US-2) - 0.50 MILES

NUMBER OF ROAD

LENGTH IN MILES - TO THE NEAREST 1/100

NOTE: SEE MAP 36 FOR ENLARGED NATIVE AMERICAN RESERVATION ROADS.



SEE MAP 16

SEE MAP 4

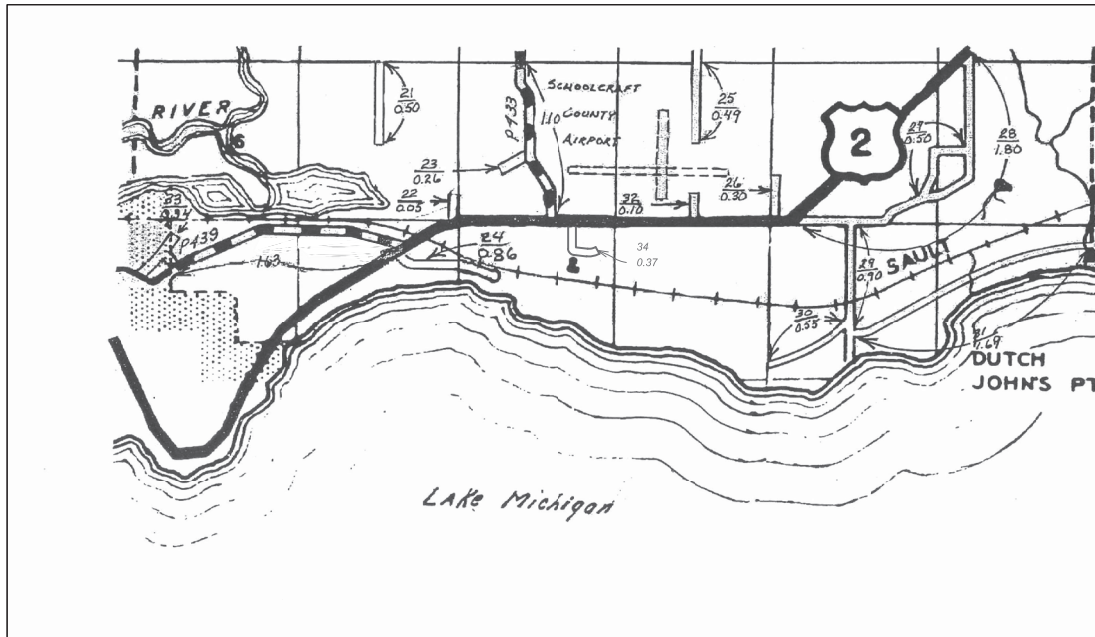
Certification Map  
of

TOWNSHIP MANISTIQUE  
SECTION \_\_\_\_\_ T. 42N R. 15W  
COUNTY SCHOOLCRAFT - 75

Schoolcraft County Road Commission  
Certified December 31, 2021

Prepared By: Ian Stampfly - County Highway Engineer  
Schoolcraft County Road Commission

SEE MAP 33



SEE MAP 19

SEE MAP 5

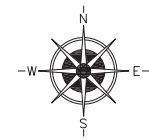
LEGEND

COUNTY LINE	-----
CORPORATE LIMITS	-----
STATE TRUNKLINE	=====
COUNTY PRIMARY	=====
COUNTY LOCAL	=====
ADJACENT COUNTY	=====
CITY OR VILLAGE STREET	=====

PRIMARY ROAD SYSTEM IS 2.73 MILES  
 LOCAL ROAD SYSTEM IS 8.71 MILES

**PRIMARY**  
 P-433 RIVER ROAD - 1.10 MILES  
 P-439 TANNERY ROAD - 1.63 MILES

**LOCAL**  
 21. N. KRUMMICH ROAD - 0.50 MILES  
 22. WALTERS ROAD - 0.05 MILES  
 23. ORR ROAD - 0.26 MILES  
 24. GLENWOOD DRIVE - 0.86 MILES  
 25. MURPHY ROAD - 0.49 MILES  
 26. HUBBLE ROAD - 0.30 MILES  
 27. WILLY MAC ROAD - 0.50 MILES  
 28. DUCK INN ROAD - 1.80 MILES  
 29. MICHIBAY DRIVE - 0.90 MILES  
 30. JUNIPER TRAIL - 0.55 MILES  
 31. MICHIBAY ROAD - 1.69 MILES  
 32. KLAGSTAD ROAD - 0.10 MILES  
 33. EAST ROAD - 0.34 MILES  
 34. DILLEXIE LANE - 0.37 MILES



SCALE 0 1/2 1 MILE  
 ONE INCH EQUALS 3000 FEET

NUMBER OF ROAD  
 LENGTH IN MILES - TO THE NEAREST 1/100

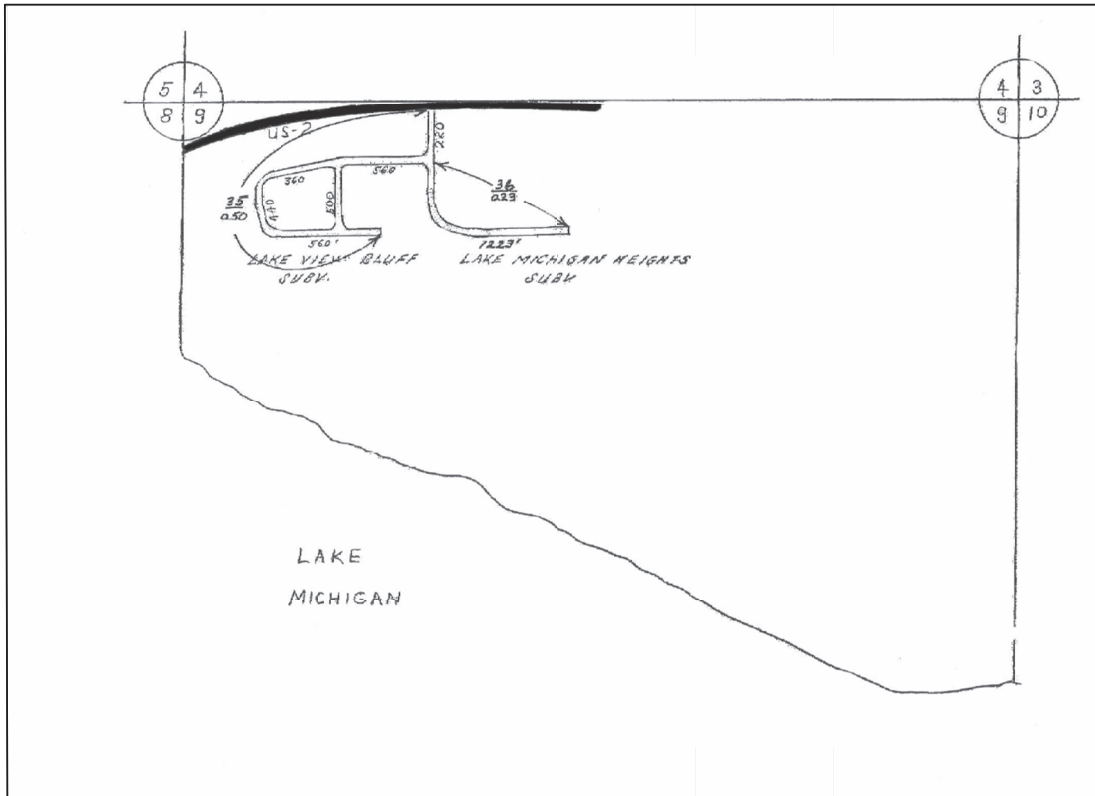
NOTE: SEE MAP 35 FOR ENLARGED VIEW OF HILLCREST AREA.

Certification Map  
 of

TOWNSHIP MANISTIQUE  
 SECTION \_\_\_\_\_ T. 41N R. 15W  
 COUNTY SCHOOLCRAFT - 75

Schoolcraft County Road Commission  
 Certified December 31, 2021

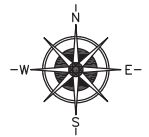
Prepared By: Ian Stampfly - County Highway Engineer  
 Schoolcraft County Road Commission



LEGEND

COUNTY LINE	-----
CORPORATE LIMITS	-----
STATE TRUNKLINE	=====
COUNTY PRIMARY	=====
COUNTY LOCAL	=====
ADJACENT COUNTY	=====
CITY OR VILLAGE STREET	=====

PRIMARY ROAD SYSTEM IS 0.00 MILES  
 LOCAL ROAD SYSTEM IS 0.73 MILES



LOCAL  
 35. HILLCREST DR & BLUFF STREET - 0.50 MILES  
 36. BOLITHO DRIVE - 0.23 MILES

NUMBER OF ROAD  
 LENGTH IN MILES - TO THE NEAREST 1/100

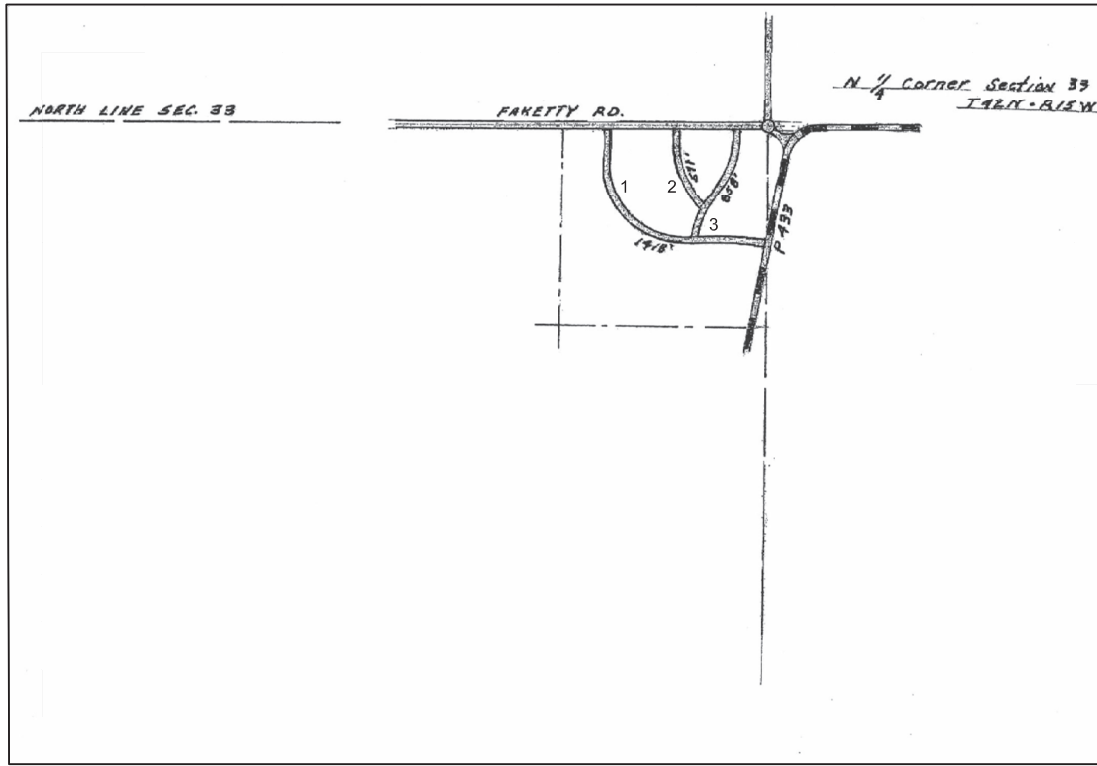
NOTE: SEE MAP 34 FOR SURROUNDING ROADS.

Certification Map  
 of

TOWNSHIP MANISTIQUE  
 SECTION 9 T. 41N R. 15W  
 COUNTY SCHOOLCRAFT - 75

Schoolcraft County Road Commission  
 Certified December 31, 2021

Prepared By: Ian Stampfly - County Highway Engineer  
 Schoolcraft County Road Commission

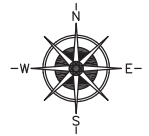


LEGEND

- COUNTY LINE
- CORPORATE LIMITS
- STATE TRUNKLINE
- COUNTY PRIMARY
- COUNTY LOCAL
- ADJACENT COUNTY
- CITY OR VILLAGE
- STREET

PRIMARY ROAD SYSTEM IS 0.00 MILES

LOCAL ROAD SYSTEM IS 0.54 MILES



SCALE 0 600 1200 FEET  
 ONE INCH EQUALS 600 FEET

LOCAL

- 1. MUKWA DRIVE - 1418 FEET
- 2. CHITOMA DRIVE - 571 FEET
- 3. ZHIGAG DRIVE - 858 FEET

NUMBER OF ROAD

LENGTH IN MILES - TO THE NEAREST 1/100

NOTE: SEE MAP 33 FOR SURROUNDING ROADS.

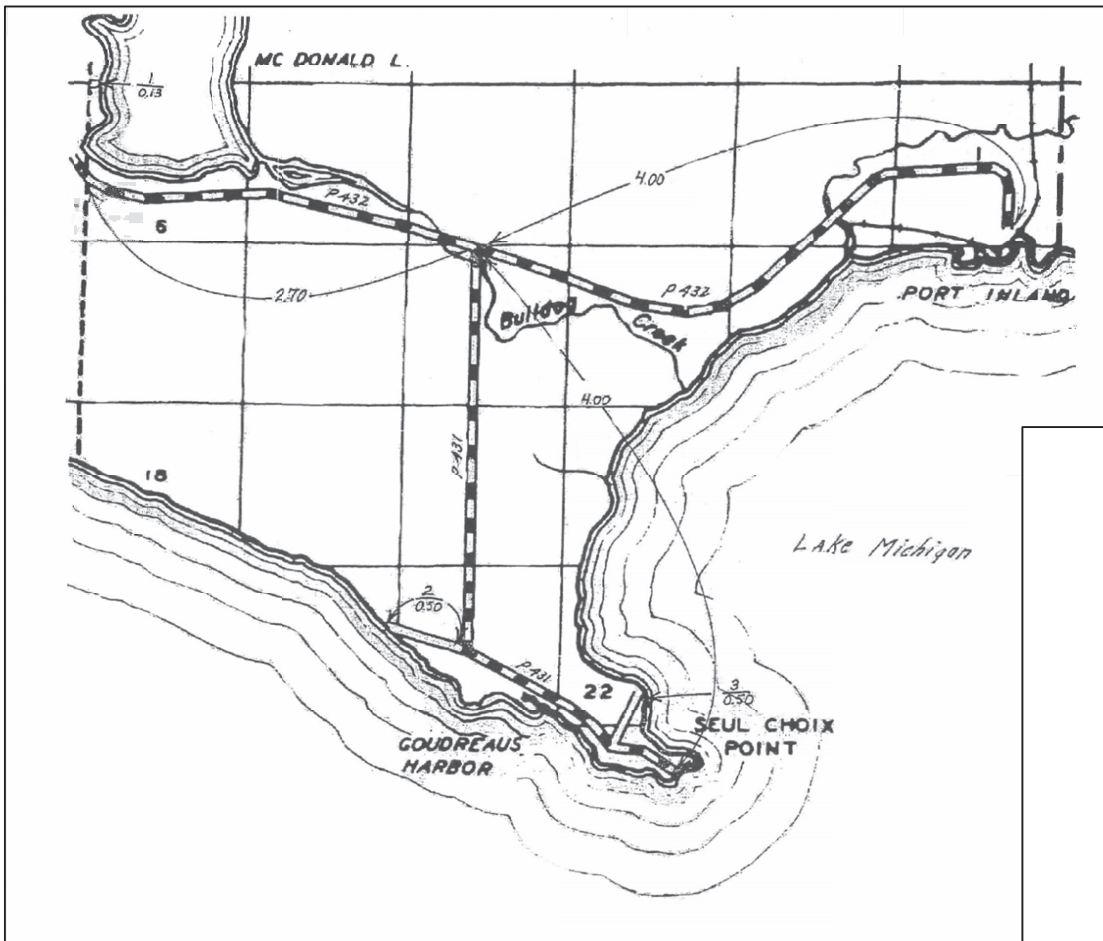
Certification Map of

TOWNSHIP MANISTIQUE  
 SECTION 33 T. 42N R. 15W  
 COUNTY SCHOOLCRAFT - 75

Schoolcraft County Road Commission  
 Certified December 31, 2021

Prepared By: Ian Stampfly - County Highway Engineer  
 Schoolcraft County Road Commission

SEE MAP 38



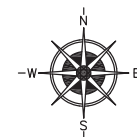
SEE MAP 5

MACKINAC COUNTY

**LEGEND**

COUNTY LINE	-----
CORPORATE LIMITS	-----
STATE TRUNKLINE	=====
COUNTY PRIMARY	=====
COUNTY LOCAL	=====
ADJACENT COUNTY	=====
CITY OR VILLAGE STREET	=====

PRIMARY ROAD SYSTEM IS 10.70 MILES  
 LOCAL ROAD SYSTEM IS 1.13 MILES



SCALE 0 1/2 1 MILE  
 ONE INCH EQUALS 3000 FEET

**PRIMARY**  
 P-431 SEUL CHOIX ROAD - 4.0 MILES  
 P-432 PORT INLAND ROAD - 6.70 MILES

**LOCAL**  
 1. MACDONALD LAKE ROAD - 0.13 MILES  
 2. HARVEY GOUDREAU ROAD - 0.50 MILES  
 3. JOHN GOUDREAU ROAD - 0.50 MILES

**NUMBER OF ROAD**  
 LENGTH IN MILES - TO THE NEAREST 1/100

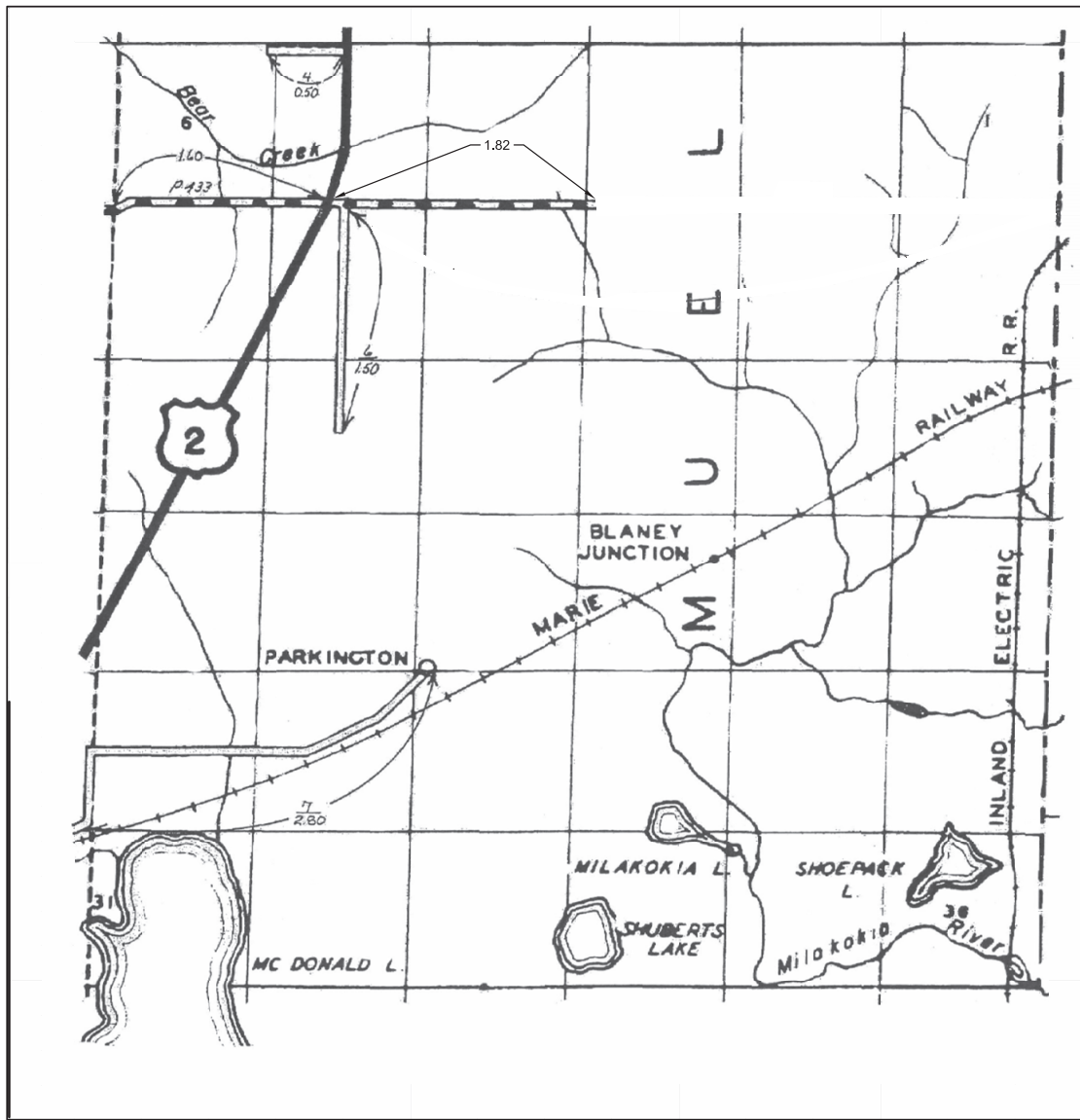
Certification Map  
 of

TOWNSHIP MUELLER  
 SECTION \_\_\_\_\_ T. 41N R. 13W  
 COUNTY SCHOOLCRAFT - 75

Schoolcraft County Road Commission  
 Certified December 31, 2021

Prepared By: Ian Stampfly - County Highway Engineer  
 Schoolcraft County Road Commission

SEE MAP 39



SEE MAP 37

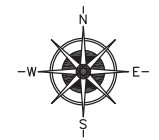
SEE MAP 4

MACKINAC COUNTY

LEGEND

COUNTY LINE	-----
CORPORATE LIMITS	-----
STATE TRUNKLINE	=====
COUNTY PRIMARY	=====
COUNTY LOCAL	=====
ADJACENT COUNTY	=====
CITY OR VILLAGE STREET	=====

PRIMARY ROAD SYSTEM IS 3.42 MILES  
 LOCAL ROAD SYSTEM IS 4.80 MILES



SCALE 0 1/2 1 MILE  
 ONE INCH EQUALS 3000 FEET

PRIMARY  
 P433 QUARRY ROAD - 3.42 MILES

LOCAL  
 4. BARKER ROAD - 0.50 MILES  
 6. VANATTA ROAD - 1.50 MILES  
 7. PARKINGTON ROAD - 2.80 MILES

NUMBER OF ROAD  
 LENGTH IN MILES - TO THE NEAREST 1/100

Certification Map  
 of

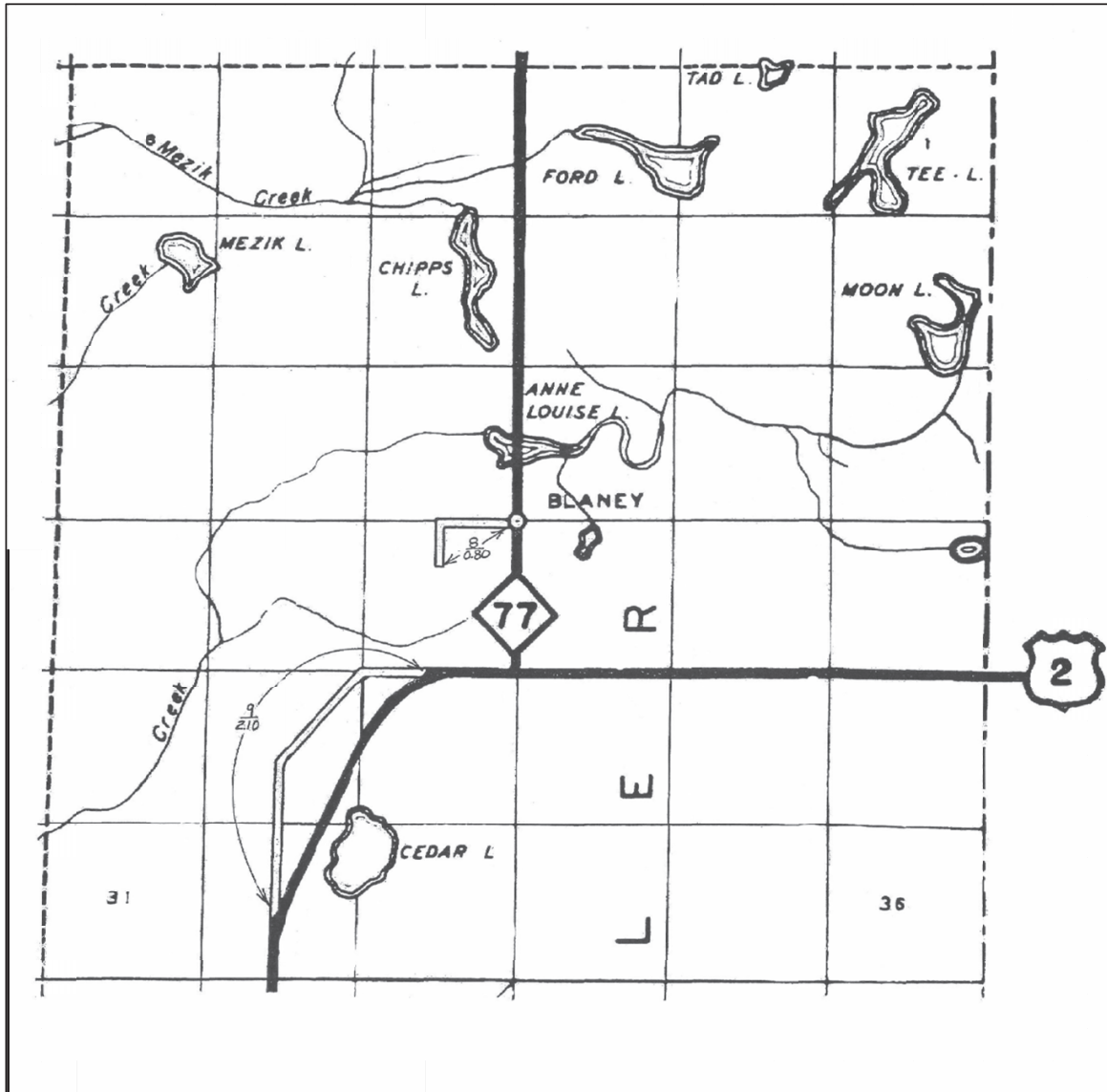
TOWNSHIP MUELLER  
 SECTION \_\_\_\_\_ T. 42N R. 13W  
 COUNTY SCHOOLCRAFT - 75

Schoolcraft County Road Commission  
 Certified December 31, 2021

Prepared By: Ian Stampfly - County Highway Engineer  
 Schoolcraft County Road Commission



SEE MAP 8

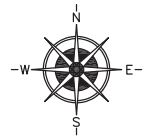


SEE MAP 38

LEGEND

- COUNTY LINE
- CORPORATE LIMITS
- STATE TRUNKLINE
- COUNTY PRIMARY
- COUNTY LOCAL
- ADJACENT COUNTY
- CITY OR VILLAGE STREET

PRIMARY ROAD SYSTEM IS 0.00 MILES  
 LOCAL ROAD SYSTEM IS 2.90 MILES



LOCAL  
 8. LAPORTE ROAD - 0.80 MILES  
 9. LANG ROAD - 2.10 MILES

SCALE 0 1 MILE  
 ONE INCH EQUALS 3000 FEET

NUMBER OF ROAD  
 LENGTH IN MILES - TO THE NEAREST 1/100

MACKINAC COUNTY

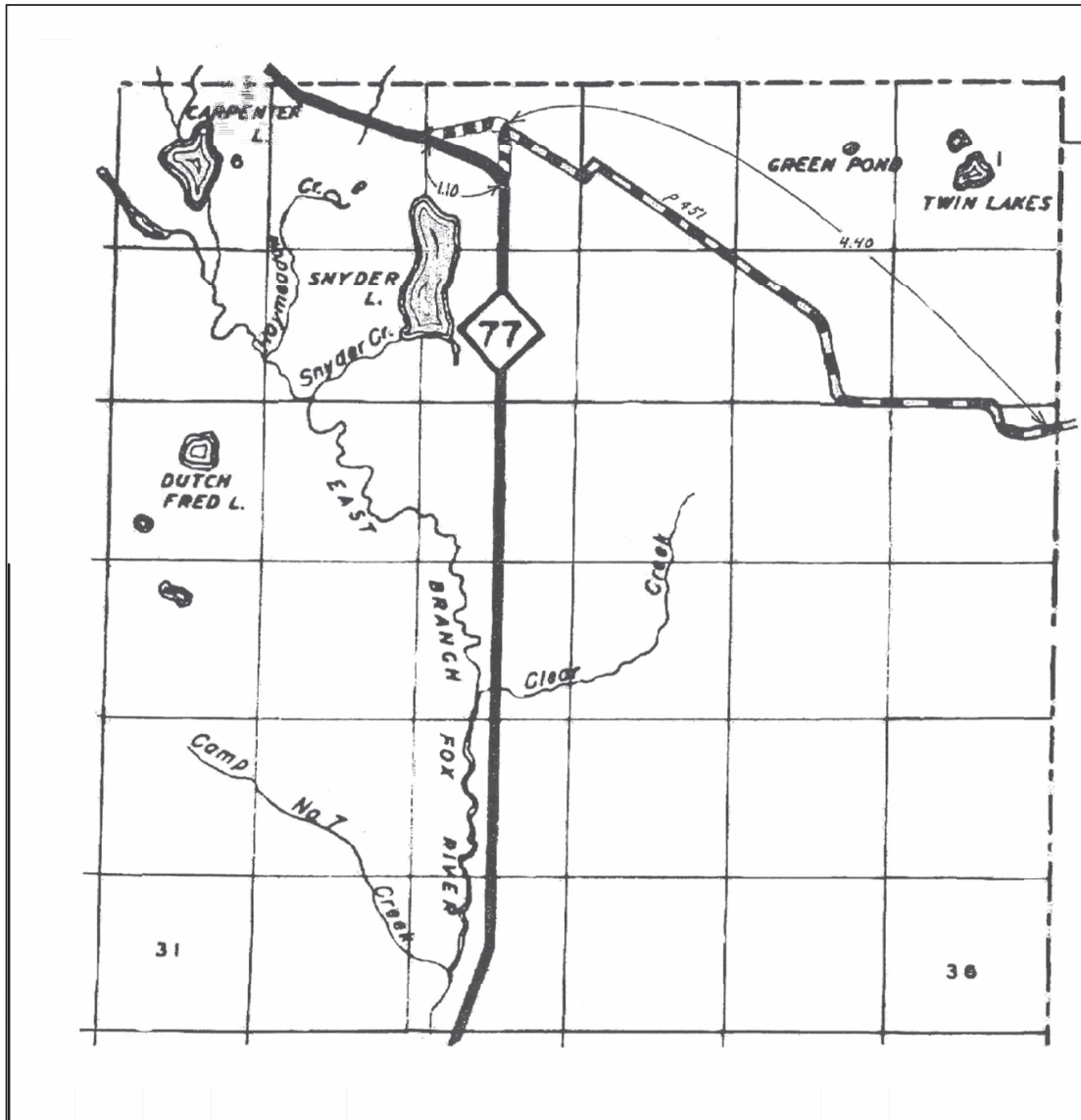
Certification Map of

TOWNSHIP MUELLER  
 SECTION \_\_\_\_\_ T. 43N R. 13W  
 COUNTY SCHOOLCRAFT - 75

Schoolcraft County Road Commission  
 Certified December 31, 2021

Prepared By: Ian Stampfly - County Highway Engineer  
 Schoolcraft County Road Commission

ALGER COUNTY



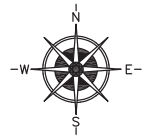
SEE MAP 43

SEE MAP 41

LEGEND

- COUNTY LINE
- CORPORATE LIMITS
- STATE TRUNKLINE
- COUNTY PRIMARY
- COUNTY LOCAL
- ADJACENT COUNTY
- CITY OR VILLAGE STREET

PRIMARY ROAD SYSTEM IS 5.50 MILES  
 LOCAL ROAD SYSTEM IS 0.00 MILES



SCALE 0 1 MILE  
 ONE INCH EQUALS 3000 FEET

PRIMARY  
 P-451 LAVENDER ROAD - 5.50 MILES

NUMBER OF ROAD  
 LENGTH IN MILES - TO THE NEAREST 1/100

LUCE COUNTY

Certification Map of

TOWNSHIP SENEY

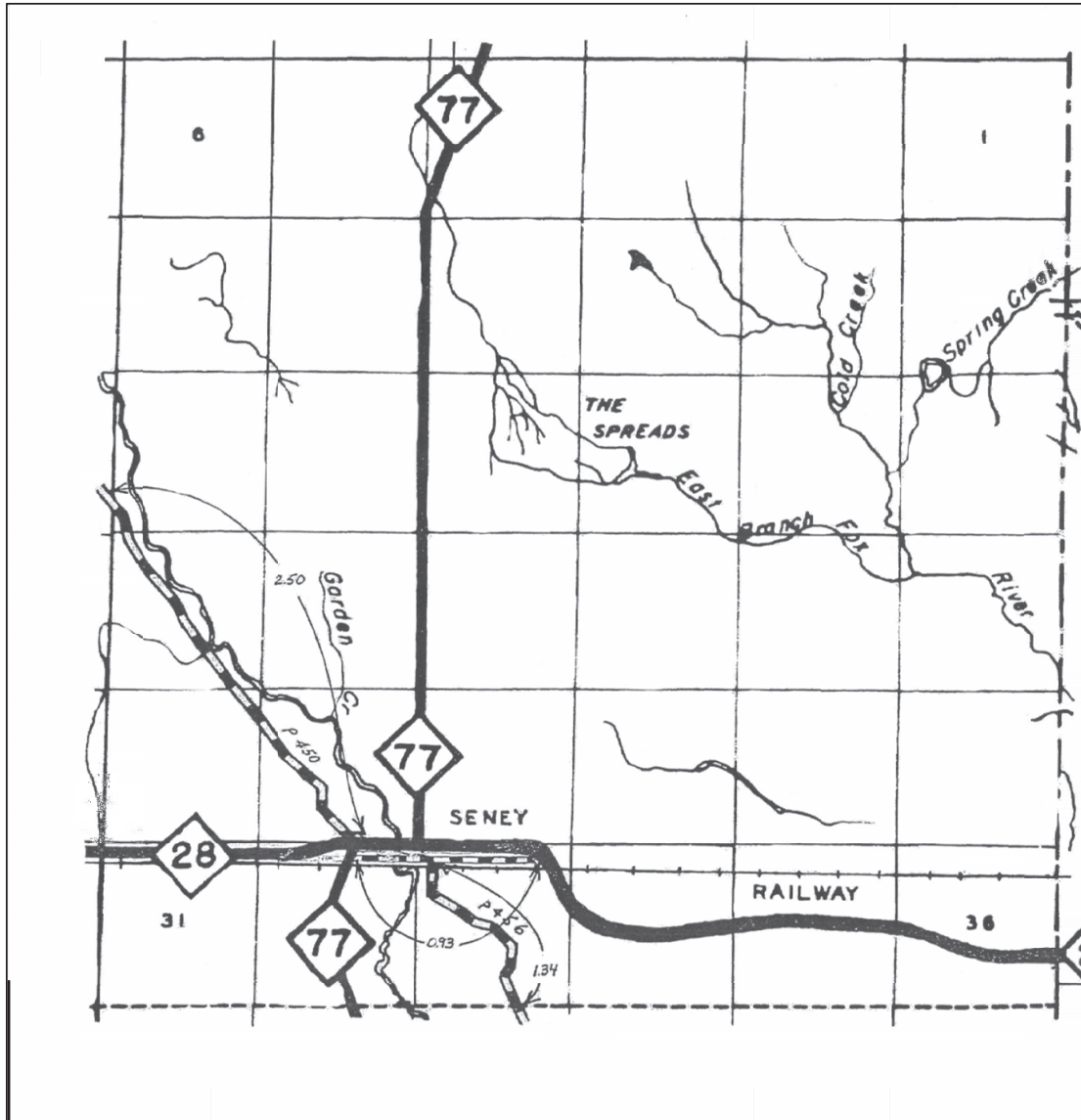
SECTION \_\_\_\_\_ T. 47N R. 13W

COUNTY SCHOOLCRAFT - 75

Schoolcraft County Road Commission  
 Certified December 31, 2021

Prepared By: Ian Stampfly - County Highway Engineer  
 Schoolcraft County Road Commission

SEE MAP 40



SEE MAP 9

SEE MAP 42

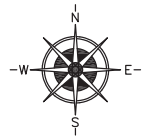
LUCE COUNTY

LEGEND

- COUNTY LINE
- CORPORATE LIMITS
- STATE TRUNKLINE
- COUNTY PRIMARY
- COUNTY LOCAL
- ADJACENT COUNTY
- CITY OR VILLAGE STREET

PRIMARY ROAD SYSTEM IS 4.77 MILES

LOCAL ROAD SYSTEM IS 0.00 MILES



SCALE 0 1 MILE  
ONE INCH EQUALS 3000 FEET

PRIMARY  
 P-450 FOX RIVER ROAD - 2.50 MILES  
 P-450 RAILROAD STREET - 0.93 MILES  
 P-456 OLD SENEY ROAD - 1.34 MILES

NUMBER OF ROAD  
 LENGTH IN MILES - TO THE NEAREST 1/100

NOTE: SEE MAP 46 FOR ENLARGED VIEW OF  
 SENEY STREETS.

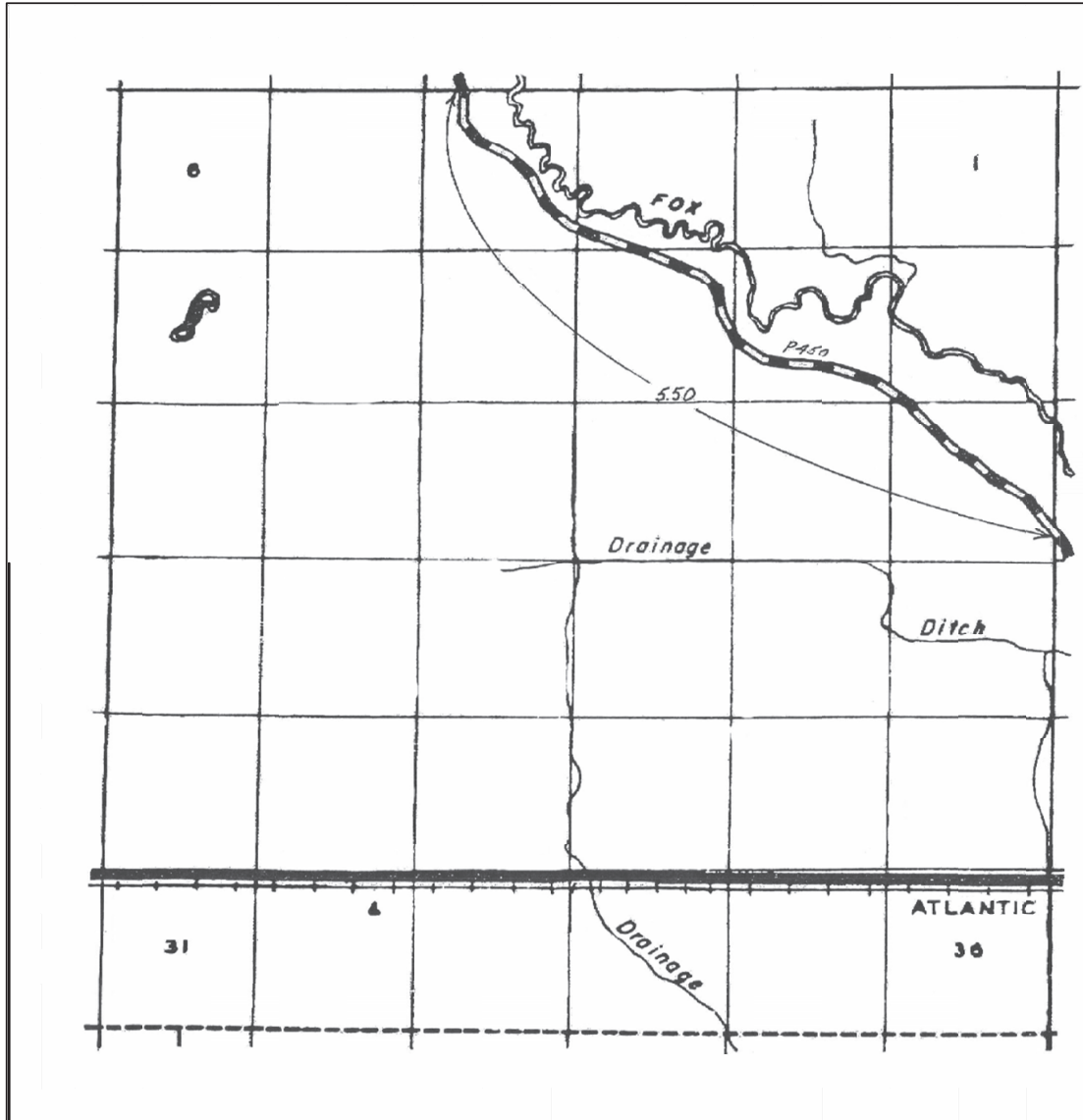
Certification Map  
 of

TOWNSHIP SENEY  
 SECTION \_\_\_\_\_ T. 46N R. 13W  
 COUNTY SCHOOLCRAFT - 75

Schoolcraft County Road Commission  
 Certified December 31, 2021

Prepared By: Ian Stampfly - County Highway Engineer  
 Schoolcraft County Road Commission

SEE MAP 43










SEE MAP 45

SEE MAP 41

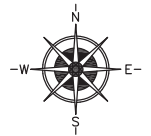
SEE MAP 1


LEGEND

- COUNTY LINE 
- CORPORATE LIMITS 
- STATE TRUNKLINE 
- COUNTY PRIMARY 
- COUNTY LOCAL 
- ADJACENT COUNTY 
- CITY OR VILLAGE STREET 

PRIMARY ROAD SYSTEM IS 5.50 MILES

LOCAL ROAD SYSTEM IS 0.00 MILES



SCALE 0  1 MILE  
ONE INCH EQUALS 3000 FEET

PRIMARY  
P-450 FOX RIVER ROAD - 5.50 MILES

NUMBER OF ROAD  
LENGTH IN MILES - TO THE NEAREST 1/100

Certification Map of

TOWNSHIP SENEY

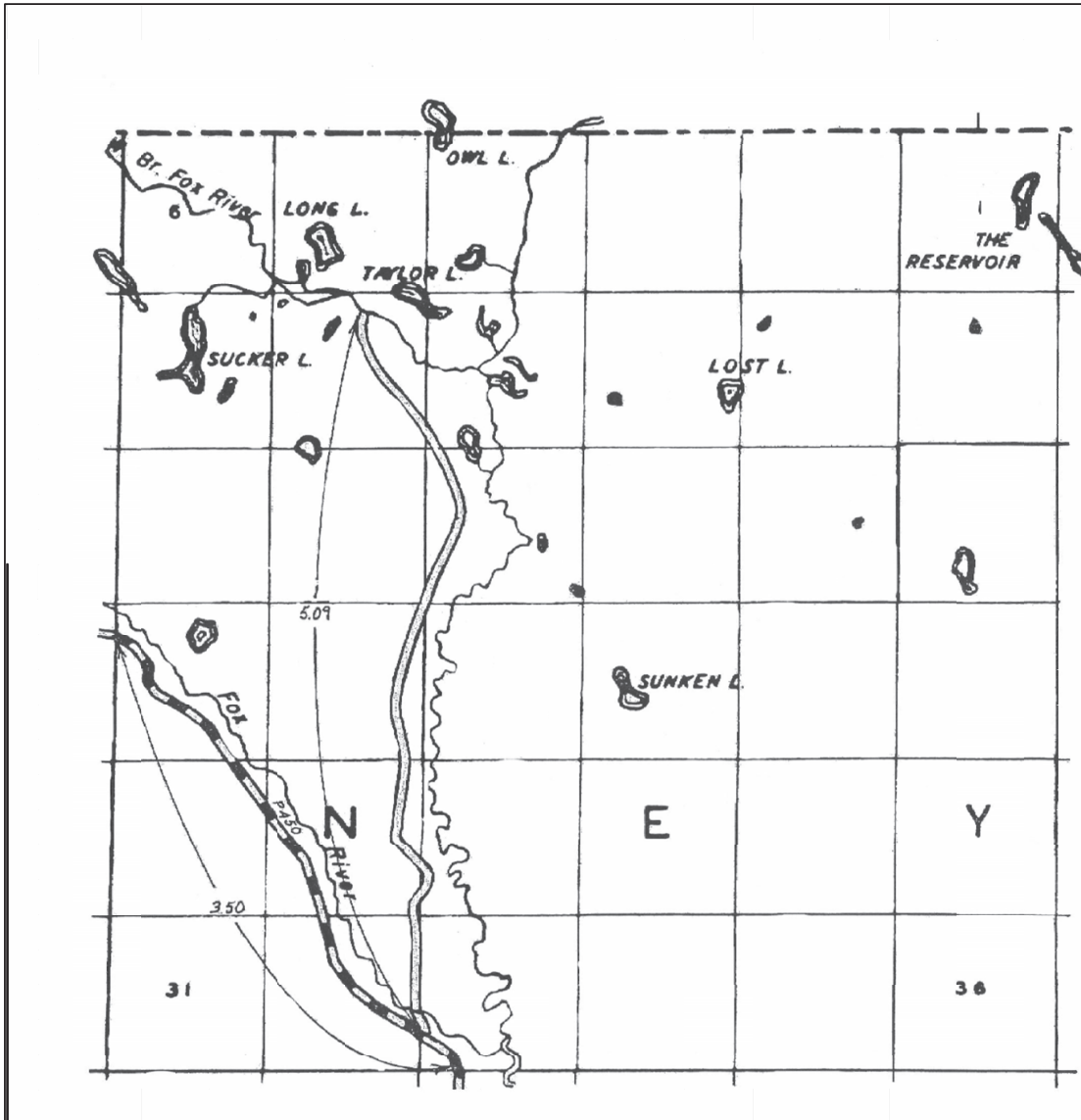
SECTION \_\_\_\_\_ T. 46N R. 14W

COUNTY SCHOOLCRAFT - 75

Schoolcraft County Road Commission  
Certified December 31, 2021

Prepared By: Ian Stampfly - County Highway Engineer  
Schoolcraft County Road Commission

ALGER COUNTY



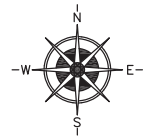
SEE MAP 44

SEE MAP 42

LEGEND

- COUNTY LINE
- CORPORATE LIMITS
- STATE TRUNKLINE
- COUNTY PRIMARY
- COUNTY LOCAL
- ADJACENT COUNTY
- CITY OR VILLAGE STREET

PRIMARY ROAD SYSTEM IS 3.50 MILES  
 LOCAL ROAD SYSTEM IS 5.09 MILES



SCALE 0 1 MILE  
 ONE INCH EQUALS 3000 FEET

**PRIMARY**  
 P-450 FOX RIVER ROAD - 3.50 MILES

**LOCAL**  
 1. WAGNER TAYLOR DAM ROAD - 5.09 MILES

**NUMBER OF ROAD**  
 LENGTH IN MILES - TO THE NEAREST 1/100

SEE MAP 40

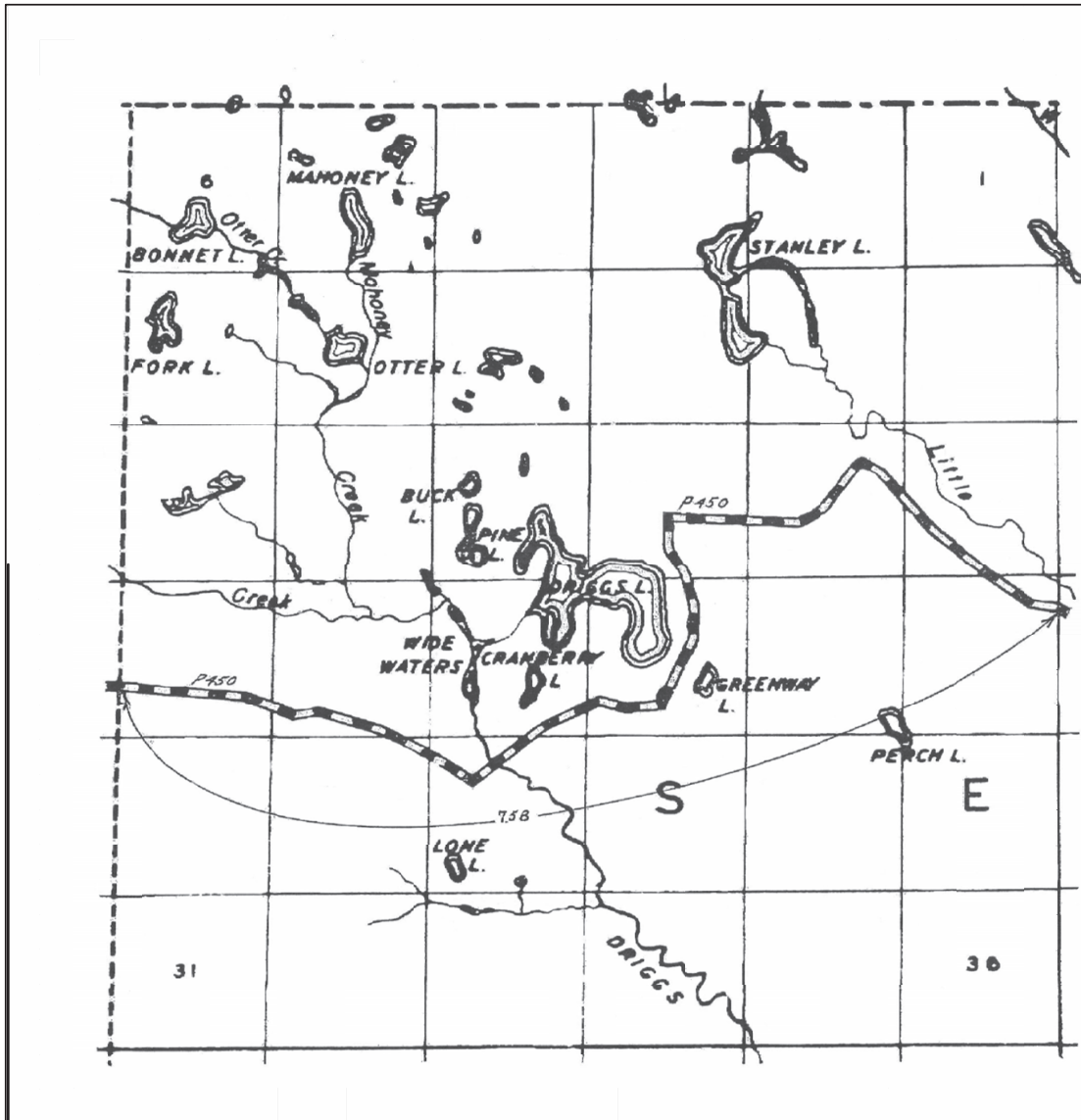
Certification Map  
 of

TOWNSHIP SENEY  
 SECTION \_\_\_\_\_ T. 47N R. 14W  
 COUNTY SCHOOLCRAFT - 75

Schoolcraft County Road Commission  
 Certified December 31, 2021

Prepared By: Ian Stampfly - County Highway Engineer  
 Schoolcraft County Road Commission

ALGER COUNTY



SEE MAP 11

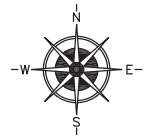
SEE MAP 43

SEE MAP 45

LEGEND

- COUNTY LINE
- CORPORATE LIMITS
- STATE TRUNKLINE
- COUNTY PRIMARY
- COUNTY LOCAL
- ADJACENT COUNTY
- CITY OR VILLAGE STREET

PRIMARY ROAD SYSTEM IS 7.58 MILES  
 LOCAL ROAD SYSTEM IS 0.00 MILES



SCALE 0 1/2 1 MILE  
 ONE INCH EQUALS 3000 FEET

PRIMARY  
 P-450 FOX RIVER ROAD - 7.58 MILES

NUMBER OF ROAD  
 LENGTH IN MILES - TO THE NEAREST 1/100

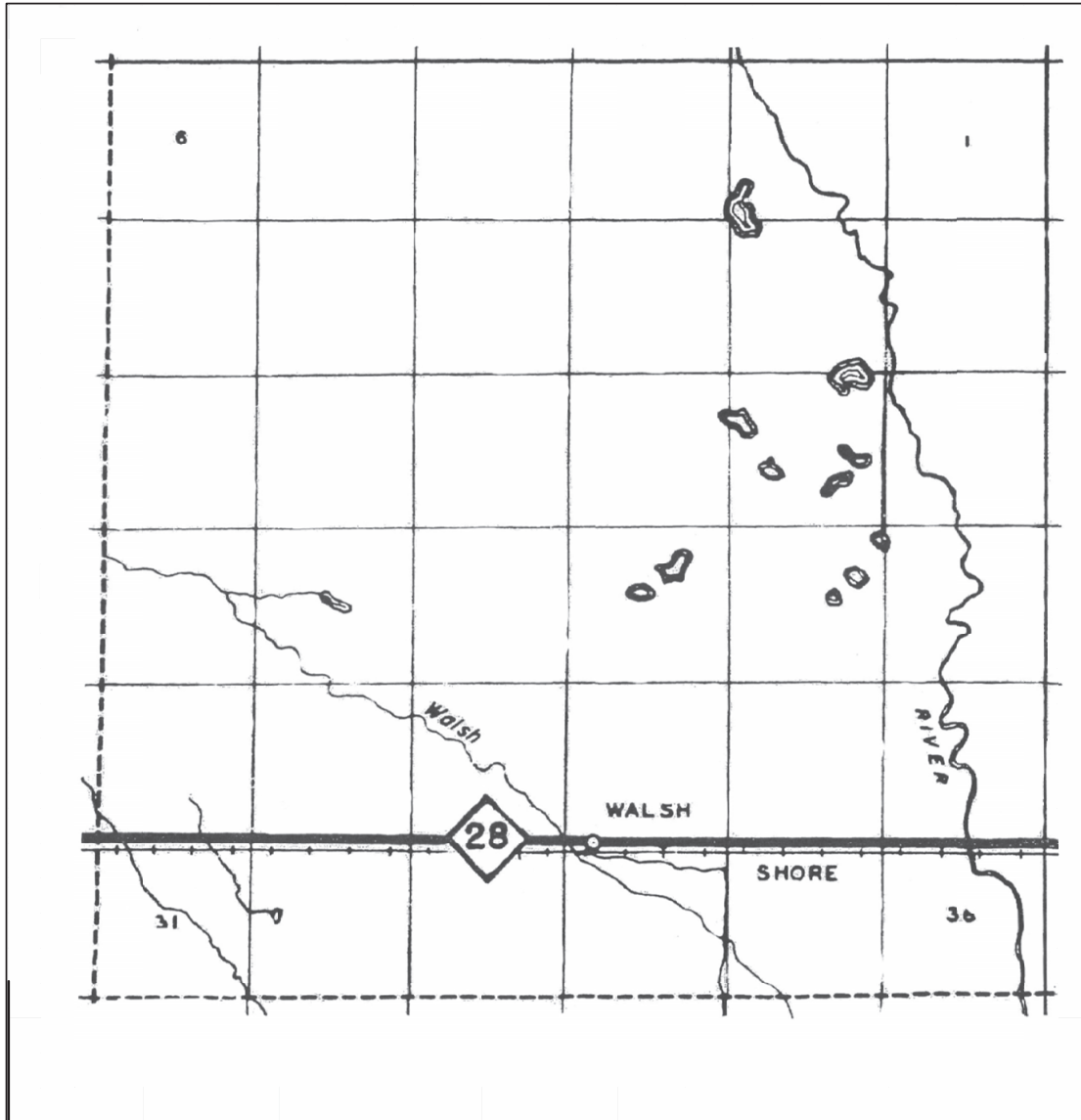
Certification Map  
 of

TOWNSHIP SENEY  
 SECTION \_\_\_\_\_ T. 47N R. 15W  
 COUNTY SCHOOLCRAFT - 75

Schoolcraft County Road Commission  
 Certified December 31, 2021

Prepared By: Ian Stampfly - County Highway Engineer  
 Schoolcraft County Road Commission

SEE MAP 44



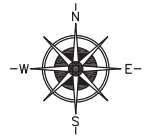
SEE MAP 30

LEGEND

- COUNTY LINE
- CORPORATE LIMITS
- STATE TRUNKLINE
- COUNTY PRIMARY
- COUNTY LOCAL
- ADJACENT COUNTY
- CITY OR VILLAGE
- STREET

PRIMARY ROAD SYSTEM IS 0.00 MILES

LOCAL ROAD SYSTEM IS 0.00 MILES



SCALE 0 1 MILE  
ONE INCH EQUALS 3000 FEET

Certification Map of

TOWNSHIP SENEY

SECTION          T. 46N R. 15W

COUNTY SCHOOLCRAFT - 75

Schoolcraft County Road Commission  
Certified December 31, 2021

Prepared By: Ian Stampfly - County Highway Engineer  
Schoolcraft County Road Commission



LEGEND

COUNTY LINE	-----
CORPORATE LIMITS	-----
STATE TRUNKLINE	=====
COUNTY PRIMARY	=====
COUNTY LOCAL	=====
ADJACENT COUNTY	=====
CITY OR VILLAGE STREET	=====

PRIMARY ROAD SYSTEM IS 0.00 MILES

LOCAL ROAD SYSTEM IS 1.32 MILES

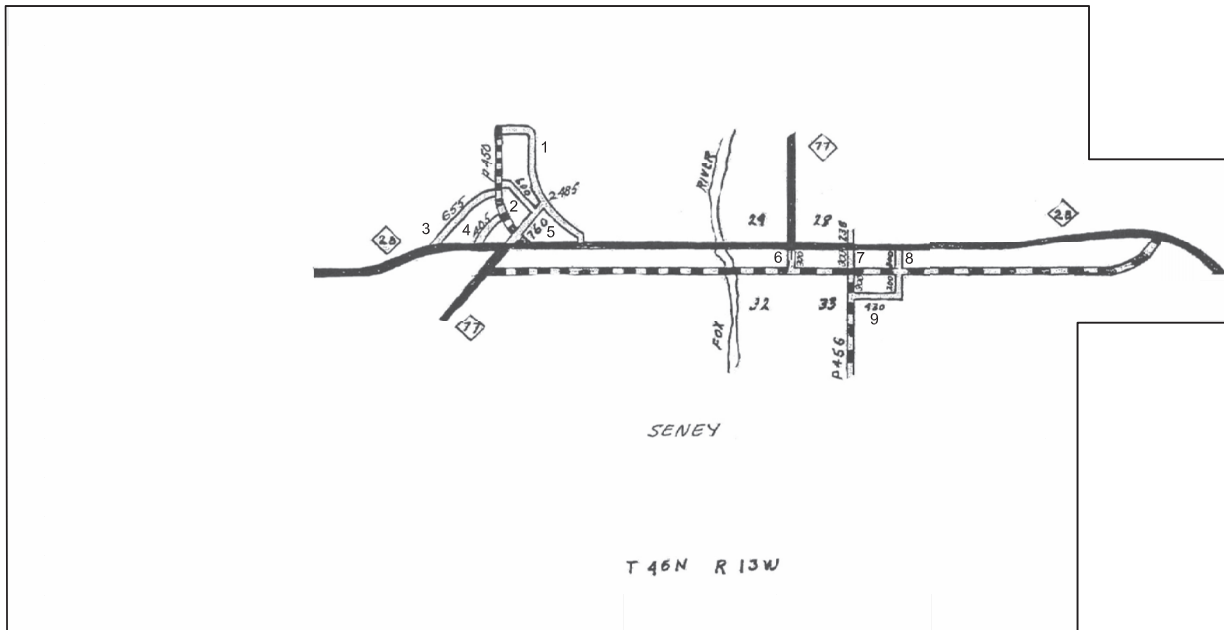
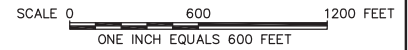
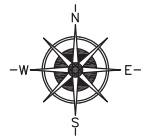
LOCAL

1. RIVER STREET & SUMMET STREET - 2485 FEET
2. CHURCH STREET - 600 FEET
3. 3RD STREET - 655 FEET
4. 2ND STREET - 405 FEET
5. 1ST STREET - 760 FEET
6. GEORGE STREET - 300 FEET
7. SENEY AVENUE - 300 FEET
8. GRAND STREET - 300 FEET
9. BRIDGE STREET - 730 FEET

NUMBER OF ROAD

LENGTH IN MILES - TO THE NEAREST 1/100

NOTE: SEE MAP 41 FOR SURROUNDING ROADS.



Certification Map  
of

TOWNSHIP SENEY

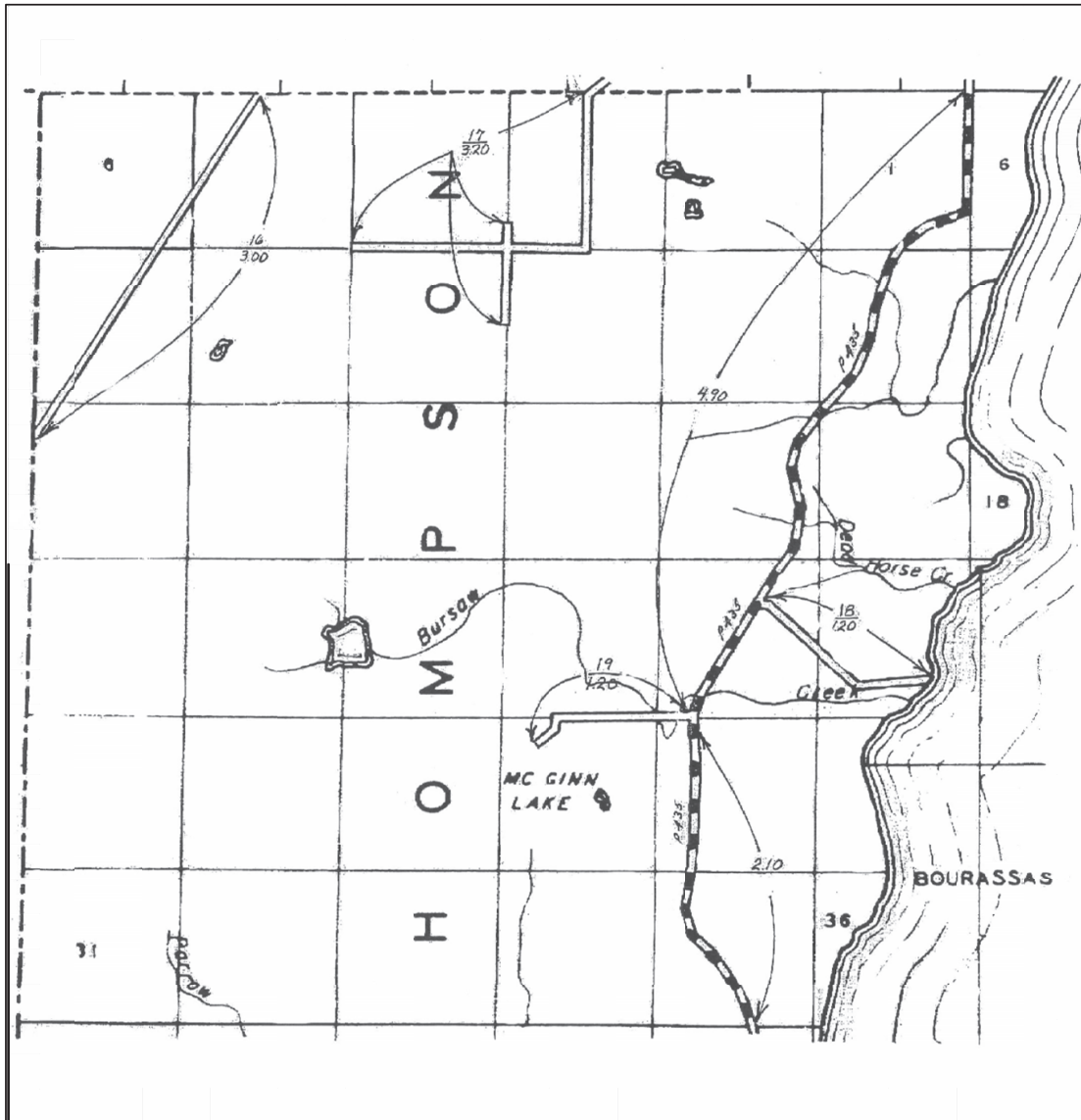
SECTION 28 T. 46N R. 13W

COUNTY SCHOOLCRAFT - 75

Schoolcraft County Road Commission  
Certified December 31, 2021

Prepared By: Ian Stampflly - County Highway Engineer  
Schoolcraft County Road Commission

SEE MAP 27



SEE MAP 48

LEGEND

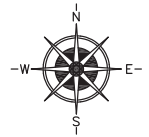
- COUNTY LINE
- CORPORATE LIMITS
- STATE TRUNKLINE
- COUNTY PRIMARY
- COUNTY LOCAL
- ADJACENT COUNTY
- CITY OR VILLAGE STREET

PRIMARY ROAD SYSTEM IS 7.0 MILES  
 LOCAL ROAD SYSTEM IS 8.60 MILES

**PRIMARY**  
 P-435 LITTLE HARBOR ROAD - 7.0 MILES

**LOCAL**  
 16, CARLSON ROAD - 3.00 MILES  
 17, FLODIN ROAD & ANDREWS ROAD - 3.20 MILES  
 18, GIERKE ROAD - 1.20 MILES  
 19, SCHUSTER ROAD - 1.20 MILES

**NUMBER OF ROAD**  
 LENGTH IN MILES - TO THE NEAREST 1/100



SCALE 0 1/2 1 MILE  
 ONE INCH EQUALS 3000 FEET

Certification Map  
 of

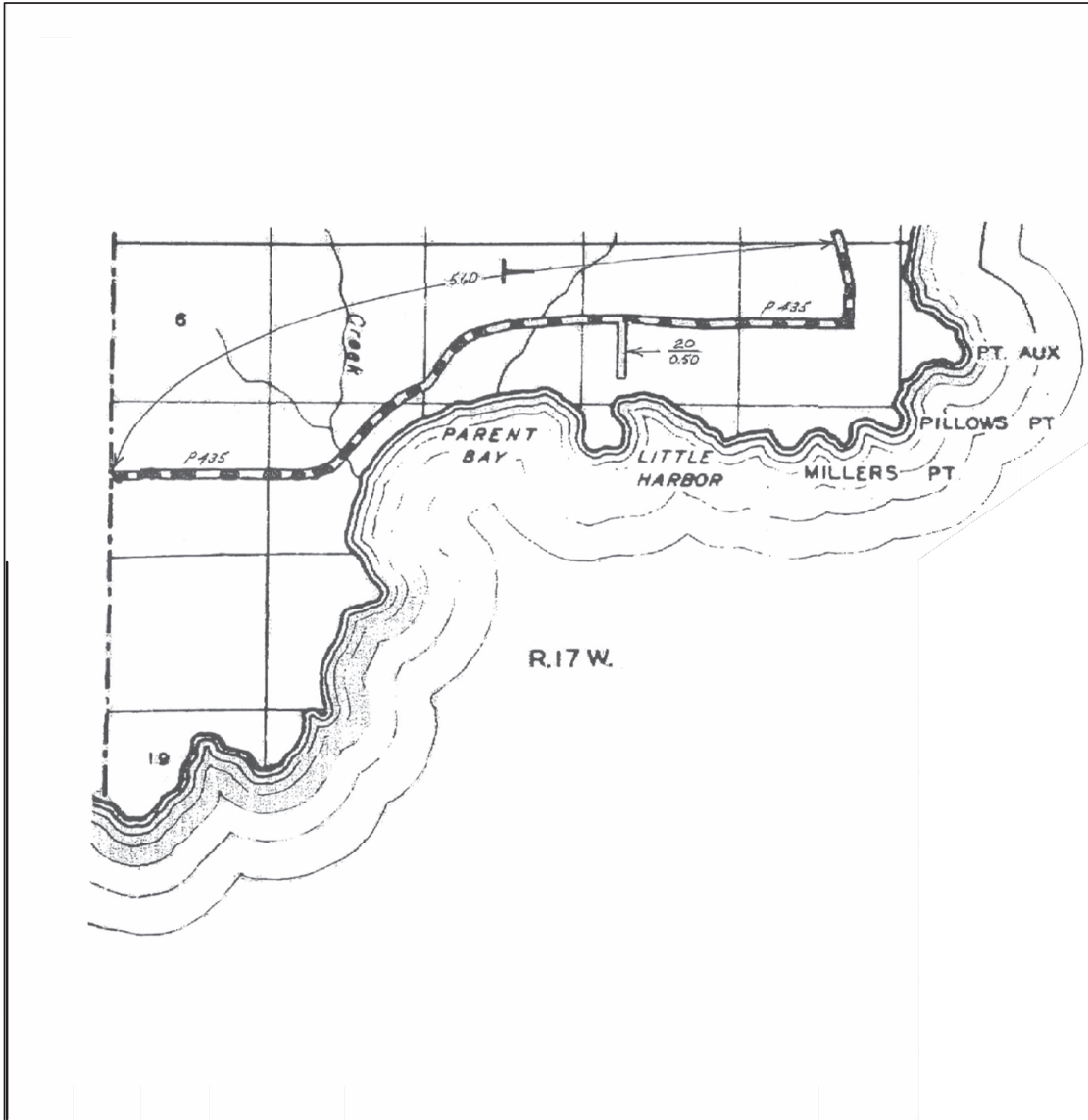
TOWNSHIP THOMPSON  
 SECTION \_\_\_\_\_ T. 40N R. 17W  
 COUNTY SCHOOLCRAFT - 75

Schoolcraft County Road Commission  
 Certified December 31, 2021

Prepared By: Ian Stampfly - County Highway Engineer  
 Schoolcraft County Road Commission

SEE MAP 47

DELTA COUNTY



LEGEND

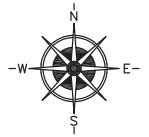
COUNTY LINE	-----
CORPORATE LIMITS	-----
STATE TRUNKLINE	=====
COUNTY PRIMARY	-----
COUNTY LOCAL	-----
ADJACENT COUNTY	=====
CITY OR VILLAGE STREET	=====

PRIMARY ROAD SYSTEM IS 5.60 MILES  
 LOCAL ROAD SYSTEM IS 0.50 MILES

PRIMARY  
 P-435 LITTLE HARBOR ROAD - 5.60 MILES

LOCAL  
 20. WILLIAMS ROAD - 0.50 MILES

NUMBER OF ROAD  
 LENGTH IN MILES - TO THE NEAREST 1/100



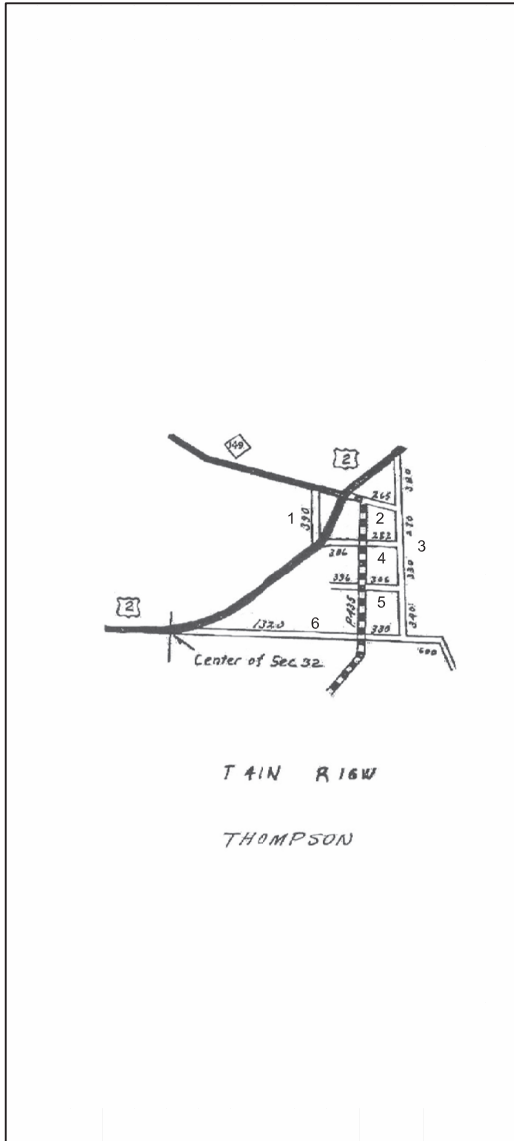
SCALE 0 1/2 1 MILE  
 ONE INCH EQUALS 3000 FEET

Certification Map  
 of

TOWNSHIP THOMPSON  
 SECTION \_\_\_\_\_ T. 39N R. 17W  
 COUNTY SCHOOLCRAFT - 75

Schoolcraft County Road Commission  
 Certified December 31, 2021

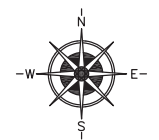
Prepared By: Ian Stampfly - County Highway Engineer  
 Schoolcraft County Road Commission



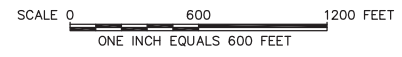
LEGEND

COUNTY LINE	-----
CORPORATE LIMITS	-----
STATE TRUNKLINE	=====
COUNTY PRIMARY	=====
COUNTY LOCAL	=====
ADJACENT COUNTY	=====
CITY OR VILLAGE STREET	=====

PRIMARY ROAD SYSTEM IS 0.00 MILES  
LOCAL ROAD SYSTEM IS 1.06 MILES



- LOCAL
1. BLUFF STREET - 330 FEET
  2. MAIN STREET - 265 FEET
  3. MANISTIQUE AVENUE - 1320 FEET
  4. PINE STREET - 638 FEET
  5. CEDAR STREET - 702 FEET
  6. THOMPSON STREET - 2250 FEET
- NUMBER OF ROAD  
LENGTH IN MILES - TO THE NEAREST 1/100



NOTE: SEE MAP 19 FOR SURROUNDING ROADS.

Certification Map  
of

TOWNSHIP THOMPSON  
SECTION 32 T. 41N R. 16W  
COUNTY SCHOOLCRAFT - 75

Schoolcraft County Road Commission  
Certified December 31, 2021

Prepared By: Ian Stampfly - County Highway Engineer  
Schoolcraft County Road Commission