

APPROVED

July 01, 2025

FOR PERIOD

July 01, 2025 to June 30, 2026

SCHOOLCRAFT COUNTY

CERTIFICATION AS OF DECEMBER 31, 2024

INDEX

Map 1	Doyle Twp. #1	Map 26	Inwood Twp. #4
Map 2	Doyle Twp. #2	Map 27	Inwood Twp. #5
Map 3	Doyle Twp. #3	Map 28	Inwood Twp. #6
Map 4	Doyle Twp. #4	Map 29	Inwood Twp. #7
Map 5	Doyle Twp. #5		
Map 6	Doyle Twp. #6	Map 30	Manistique Twp. #1
Map 7	Doyle Twp. #7	Map 31	Manistique Twp. #2
		Map 32	Manistique Twp. #3
Map 8	Germfask Twp. #1	Map 33	Manistique Twp. #4
Map 9	Germfask Twp. #2	Map 34	Manistique Twp. #5
Map 10	Germfask Twp. #3	Map 35	Manistique Twp. #6
		Map 36	Manistique Twp. #7
Map 11	Hiawatha Twp. #1		
Map 12	Hiawatha Twp. #2	Map 37	Mueller Twp. #1
Map 13	Hiawatha Twp. #3	Map 38	Mueller Twp. #2
Map 14	Hiawatha Twp. #4	Map 39	Mueller Twp. #3
Map 15	Hiawatha Twp. #5		
Map 16	Hiawatha Twp. #6	Map 40	Seney Twp. #1
Map 17	Hiawatha Twp. #7	Map 41	Seney Twp. #2
Map 18	Hiawatha Twp. #8	Map 42	Seney Twp. #3
Map 19	Hiawatha Twp. #9	Map 43	Seney Twp. #4
	Thompson Twp. #4	Map 44	Seney Twp. #5
Map 20	Hiawatha Twp. #10	Map 45	Seney Twp. #6
Map 21	Hiawatha Twp. #11	Map 46	Seney Twp. #7
Map 22	Hiawatha Twp. #12		
Map 23	Inwood Twp. #1	Map 47	Thompson Twp. #5
	Thompson Twp. #1	Map 48	Thompson Twp. #6
Map 24	Inwood Twp. #2	Map 49	Thompson Twp. #7
	Thompson Twp. #2		
Map 25	Inwood Twp. #3		
	Thompson Twp. #3		

"I CERTIFY THAT ALL OF THE ROADS ON WHICH LENGTHS HAVE BEEN ENTERED ALONG THE ROAD BANDS OF THE ATTACHED TOWNSHIP AND ENLARGE SECTION MAPS ARE NORMALLY OPEN TO AUTOMOBILE TRAFFIC DURING THE MONTHS OF MAY THROUGH OCTOBER AND ARE UNDER THE JURISDICTION OF THE SCHOOLCRAFT COUNTY ROAD COMMISSION."

E-SIGNED by Jean Vanderville
on 2025-03-14 07:55:48 EDT

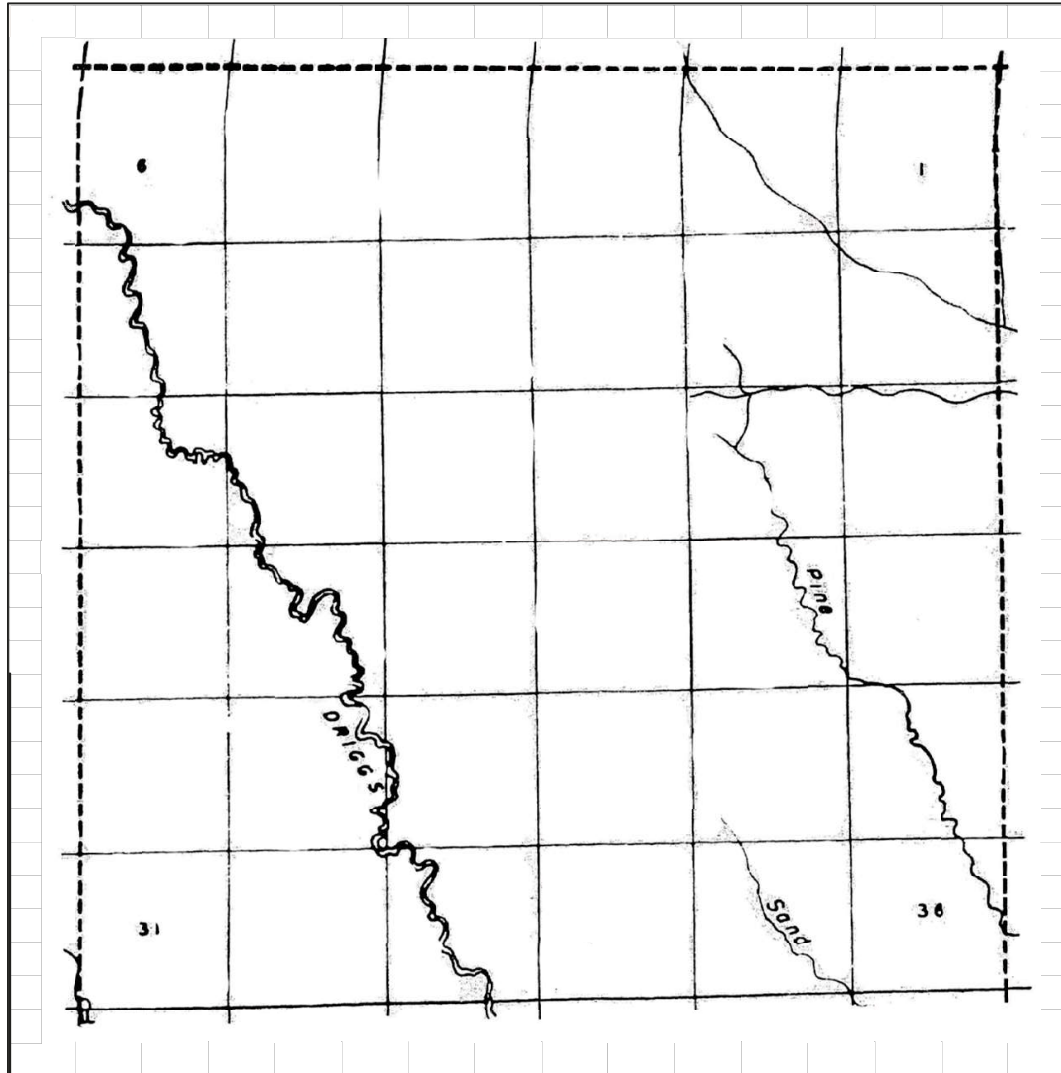
JEAN VANDERVILLE, MANAGING DIRECTOR

2025-03-14 07:55:48

DATE

Township	Primary Road Miles	Local Road Miles	Total Township Miles
Doyle	30.46	23.6	54.06
Germfask	21.63	18.06	39.69
Hiawatha	37.69	47.51	85.2
Thompson	32.95	22.38	55.33
Inwood	38.55	40.9	79.45
Manistique	19.81	42.6	62.41
Mueller	14.12	8.83	22.95
Seney	26.85	6.41	33.26
Total	222.06	210.29	

SEE MAP 42



SEE MAP 2

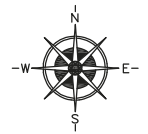
SEE MAP 9

LEGEND

COUNTY LINE	----
CORPORATE LIMITS	-----
STATE TRUNKLINE	=====
COUNTY PRIMARY	=====
COUNTY LOCAL	=====
ADJACENT COUNTY	=====
CITY OR VILLAGE STREET	=====

PRIMARY ROAD SYSTEM IS 0.00 MILES

LOCAL ROAD SYSTEM IS 0.00 MILES



SCALE 0 1/2 1 MILE
ONE INCH EQUALS 3000 FEET

Certification Map
of

TOWNSHIP DOYLE

SECTION T. 45N R. 14W

COUNTY SCHOOLCRAFT - 75

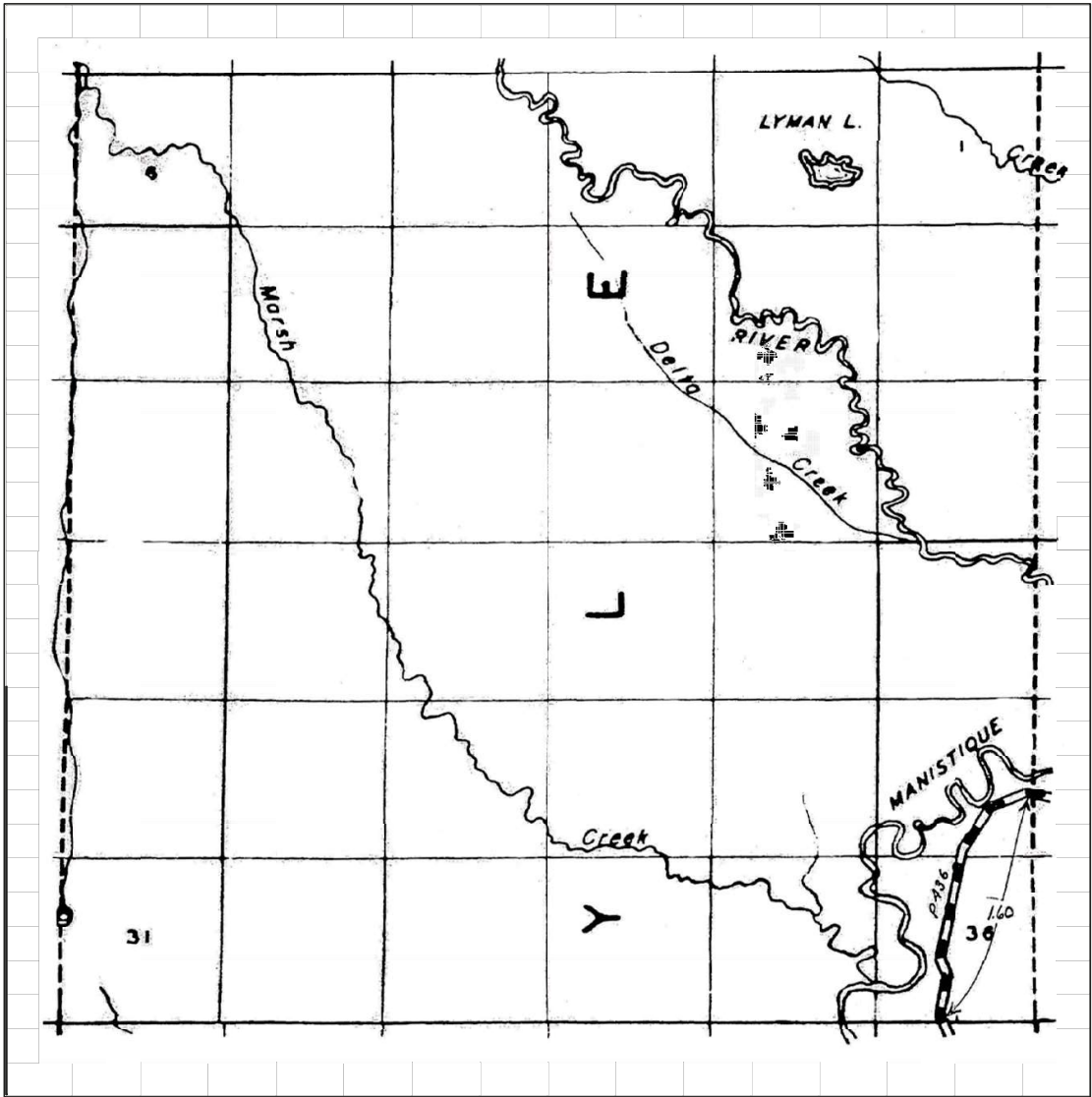
Schoolcraft County Road Commission
Certified December 31, 2024

Prepared By: Ian Stampfl, PE - County Highway Engineer
Schoolcraft County Road Commission

SEE MAP 1

SEE MAP 31

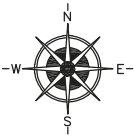
SEE MAP 8



LEGEND

- COUNTY LINE
- CORPORATE LIMITS
- STATE TRUNKLINE
- COUNTY PRIMARY
- COUNTY LOCAL
- ADJACENT COUNTY
- CITY OR VILLAGE STREET

PRIMARY ROAD SYSTEM IS 1.60 MILES
LOCAL ROAD SYSTEM IS 0.00 MILES



CR - 436 (FLOODWOOD ROAD) - 1.60 MILES

SCALE 0 1/2 1 MILE
ONE INCH EQUALS 3000 FEET

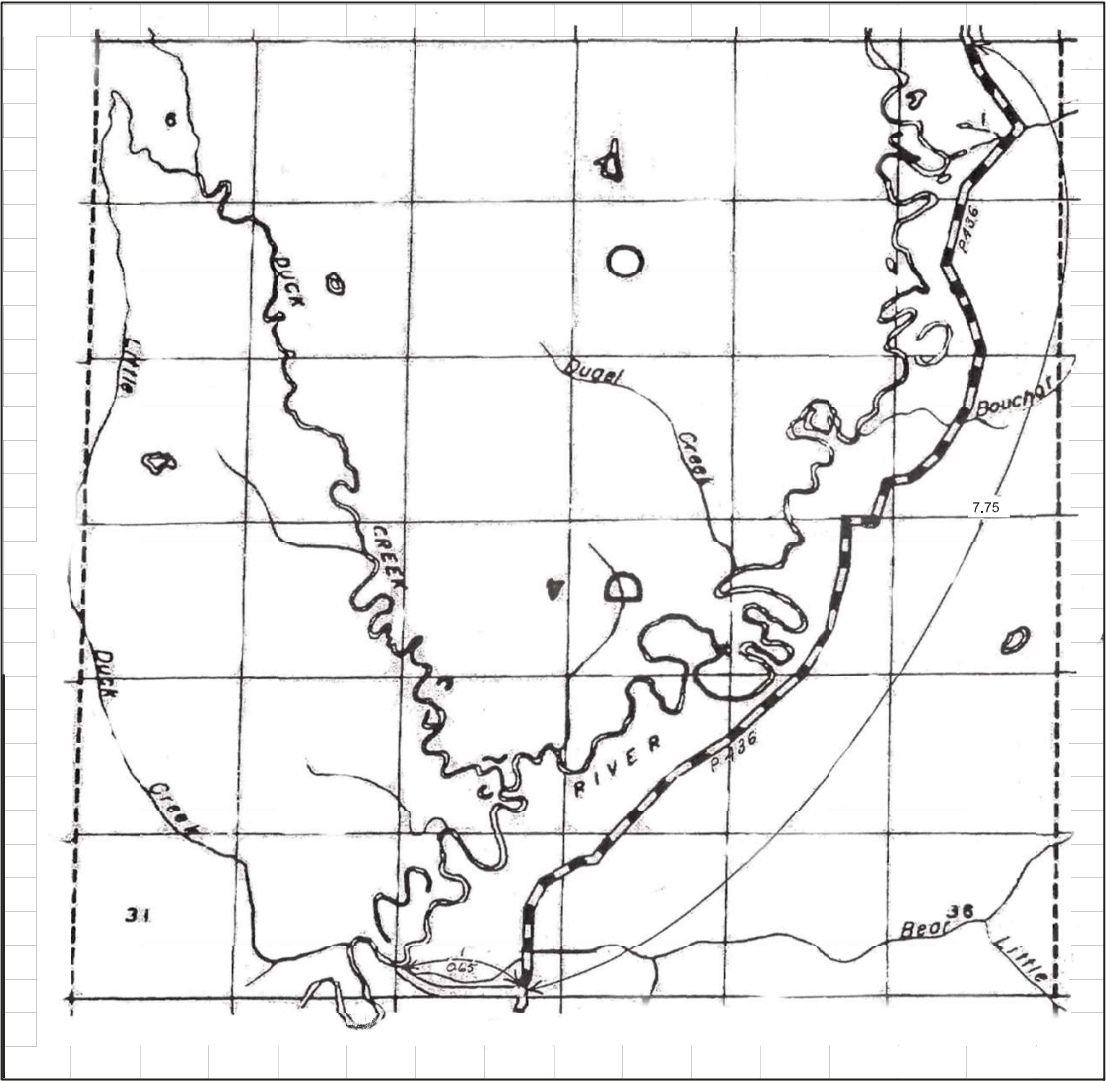
Certification Map
of

TOWNSHIP DOYLE
SECTION T. 44N R. 14W
COUNTY SCHOOLCRAFT - 75

Schoolcraft County Road Commission
Certified December 31, 2024

Prepared By: Ian Stampfly, PE - County Highway Engineer
Schoolcraft County Road Commission

SEE MAP 2

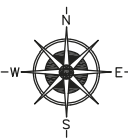


SEE MAP 4

LEGEND

- COUNTY LINE
- CORPORATE LIMITS
- STATE TRUNKLINE
- COUNTY PRIMARY
- COUNTY LOCAL
- ADJACENT COUNTY
- CITY OR VILLAGE STREET

PRIMARY ROAD SYSTEM IS 7.75 MILES
LOCAL ROAD SYSTEM IS 0.65 MILES



SCALE 0 1/2 1 MILE
ONE INCH EQUALS 3000 FEET

PRIMARY
CR - 436 (FLOODWOOD ROAD) - 7.75 MILES
LOCAL
1. BOWMAN ROAD - 0.65 MILES
NUMBER OF ROAD
LENGTH IN MILES - TO THE NEAREST 1/100

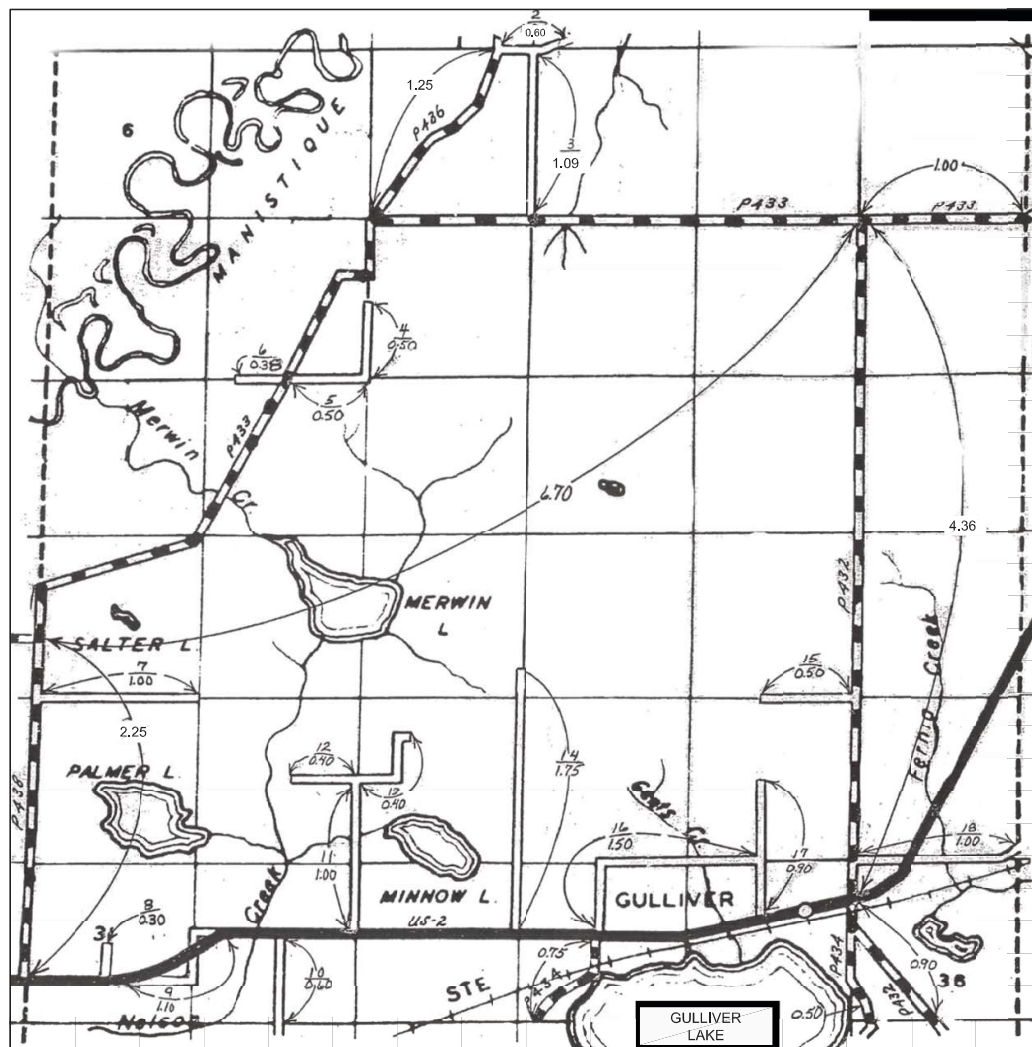
Certification Map
of

TOWNSHIP DOYLE
SECTION T. 43N R. 14W
COUNTY SCHOOLCRAFT - 75

Schoolcraft County Road Commission
Certified December 31, 2024

Prepared By: Ian Stampf, PE - County Highway Engineer
Schoolcraft County Road Commission

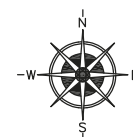
SEE MAP 5



SEE MAP 38

COUNTY LINE	----
CORPORATE LIMITS	-----
STATE TRUNKLINE	=====
COUNTY PRIMARY	=====
COUNTY LOCAL	=====
ADJACENT COUNTY	=====
CITY OR VILLAGE	=====
STREET	=====

LOCAL ROAD SYSTEM IS 13.52 MILES



SCALE 0 $\frac{1}{2}$ 1 MILE
ONE INCH EQUALS 3000 FEET

CR - 433 (RIVER ROAD) - 7.70 MILES
CR - 432 (PORT INLAND ROAD) - 5.26 MILES
CR - 434 (GULLIVER LAKE ROAD) - 1.25 MILES
CR - 436 (FLOODWOOD ROAD) - 1.25 MILES
CR - 438 (TOWNLINE ROAD) - 2.25 MILES

2. SHERIDAN ROAD - 0.60 MILES
3. HAYDEN ROAD - 1.09 MILES
4. LETSON ROAD - 0.50 MILES
5. CLARK ROAD - 0.50 MILES
6. RICE ROAD - 0.38 MILES
7. BURRELL ROAD - 1.00 MILES
8. WATSON ROAD - 0.30 MILES
9. PAWLEY ROAD - 1.10 MILES
10. BERGMAN ROAD - 0.60 MILES
11. KELLY ROAD - 1.00 MILES
12. STELZER ROAD - 0.40 MILES
13. WM NELSON ROAD - 0.40 MILES
14. COOPER ROAD - 1.75 MILES
15. FRENETTE ROAD - 0.50 MILES
16. LEX NELSON ROAD - 1.50 MILES
17. HALVERSON ROAD - 0.90 MILES
18. PARKINGTON ROAD - 1.00 MILES

NOTE: SEE MAP 6 FOR ENLARGED VIEW
OF GULLIVER ROADS.

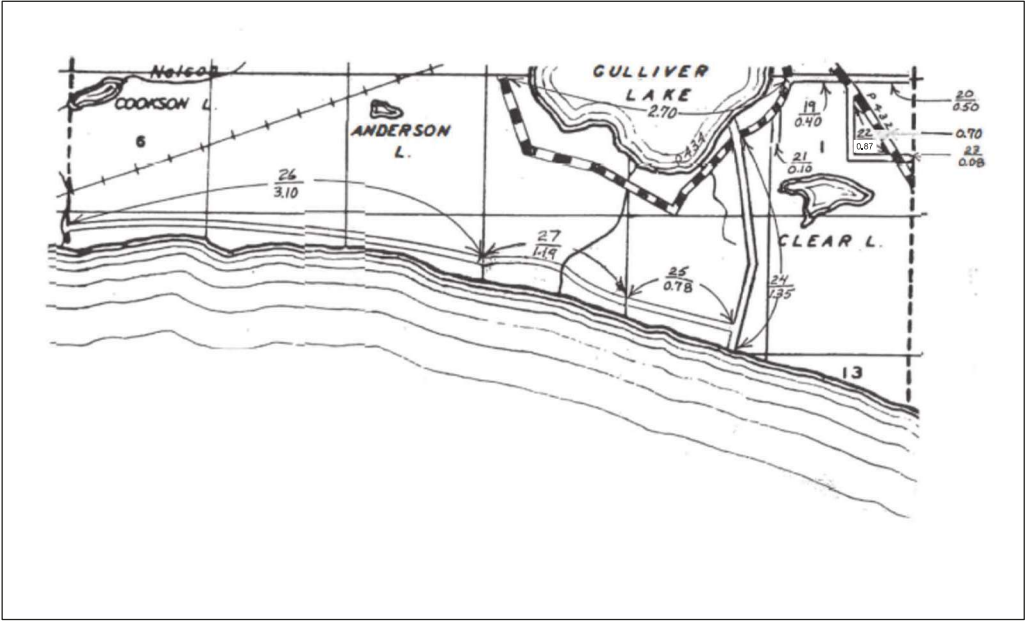
Certification Map
of

TOWNSHIP DOYLE
SECTION _____ T. 42N R. 14W
COUNTY SCHOOLCRAFT - 75

Schoolcraft County Road Commission
Certified December 31, 2024

Prepared By: Ian Stampfly, PE - County Highway Engineer
Schoolcraft County Road Commission

SEE MAP 4



SEE MAP 34

SEE MAP 37

PRIMARY
CR - 432 (PORT INLAND ROAD) - 0.70 MILES
CR - 434 (GULLIVER LAKE ROAD) - 2.70 MILES

LOCAL
19. JONES ROAD - 0.40 MILES
20. DIXNER ROAD - 0.50 MILES
21. AIRPORT ROAD - 0.10 MILES
22. REID ROAD - 0.87 MILES
23. McDONALD LAKE ROAD - 0.08 MILES
24. LAKE MICHIGAN ROAD - 1.35 MILES
25. MICHIGAN SHORES ROAD - 0.78 MILES
26. MICHIBAY ROAD - 3.10 MILES
27. MICHIBAY ROAD - 1.19 MILES

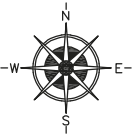
NUMBER OF ROAD
LENGTH IN MILES - TO THE NEAREST 1/100

NOTE: SEE MAP 7 FOR ENLARGED VIEW
OF ROADS ON THE SOUTH END OF
GULLIVER LAKE.

LEGEND

- COUNTY LINE
- CORPORATE LIMITS
- STATE TRUNKLINE
- COUNTY PRIMARY
- COUNTY LOCAL
- ADJACENT COUNTY
- CITY OR VILLAGE
- STREET

PRIMARY ROAD SYSTEM IS 3.40 MILES
LOCAL ROAD SYSTEM IS 8.37 MILES



SCALE 0 1/2 1 MILE
ONE INCH EQUALS 3000 FEET

Certification Map
of

TOWNSHIP DOYLE
SECTION T. 41N R. 14W
COUNTY SCHOOLCRAFT - 75

Schoolcraft County Road Commission
Certified December 31, 2024

Prepared By: Ian Stampfly, PE - County Highway Engineer
Schoolcraft County Road Commission

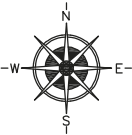
LEGEND

COUNTY LINE	----
CORPORATE LIMITS	-----
STATE TRUNKLINE	=====
COUNTY PRIMARY	=====
COUNTY LOCAL	=====
ADJACENT COUNTY	=====
CITY OR VILLAGE STREET	=====

PRIMARY ROAD SYSTEM IS 0.00 MILES
LOCAL ROAD SYSTEM IS 0.30 MILES

LOCAL
LAKE STREET - 250 FEET
MINNEAPOLIS STREET - 950 FEET
RODGERS ROAD - 300 FEET

NOTE: SEE MAP 4 FOR SURROUNDING
ROADS.



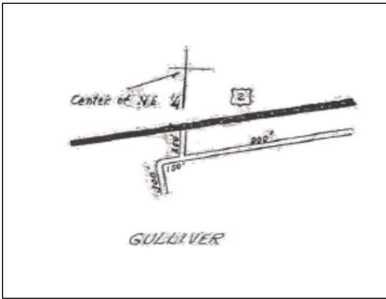
SCALE 0 600 1200 FEET
ONE INCH EQUALS 600 FEET

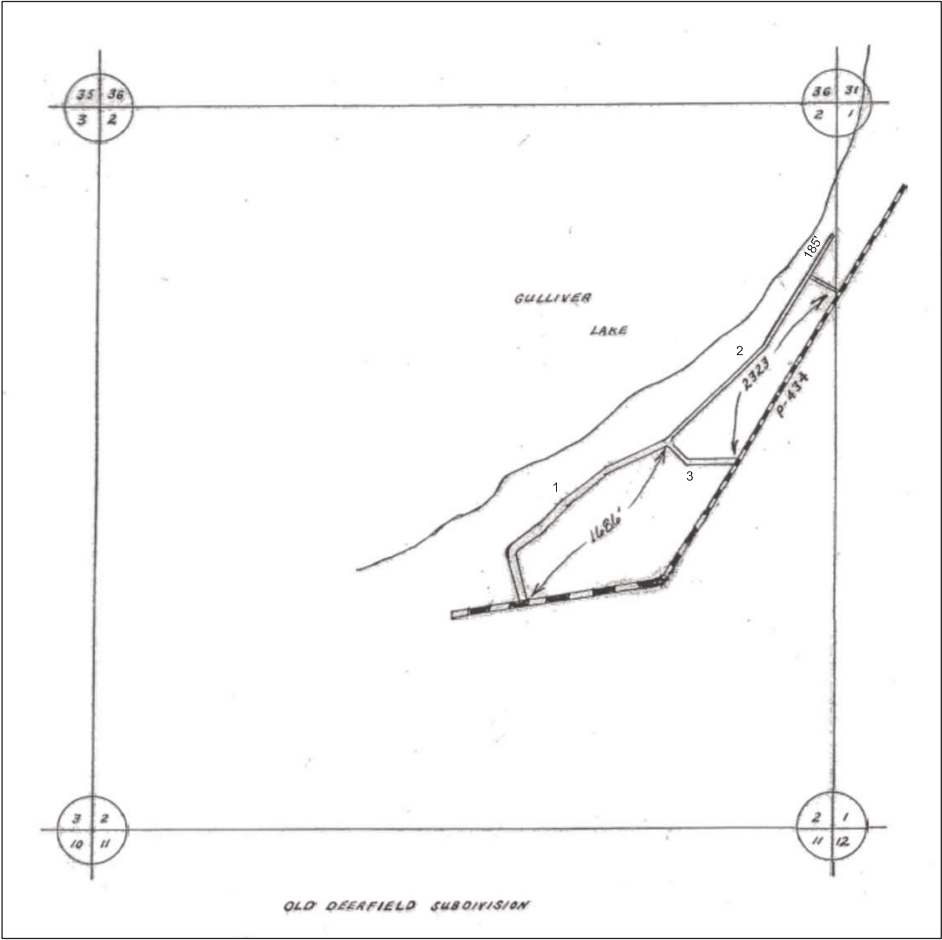
Certification Map
of

TOWNSHIP DOYLE
SECTION 35 T. 42N R. 14W
COUNTY SCHOOLCRAFT - 75

Schoolcraft County Road Commission
Certified December 31, 2024

Prepared By: Ian Stampfli, PE - County Highway Engineer
Schoolcraft County Road Commission



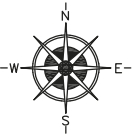


LEGEND	
COUNTY LINE	-----
CORPORATE LIMITS	-----
STATE TRUNKLINE	=====
COUNTY PRIMARY	=====
COUNTY LOCAL	=====
ADJACENT COUNTY	=====
CITY OR VILLAGE STREET	=====

PRIMARY ROAD SYSTEM IS 0.00 MILES
LOCAL ROAD SYSTEM IS 0.76 MILES

- LOCAL
1. TOWNSHIP PARK ROAD - 1686 FEET
 2. CORBRIDGE ROAD - 2508 FEET
 3. LAKE MICHIGAN ROAD - 470 FEET

NOTE: SEE MAP 5 FOR SURROUNDING
ROADS.



SCALE 0 600 1200 FEET
ONE INCH EQUALS 600 FEET

Certification Map
of

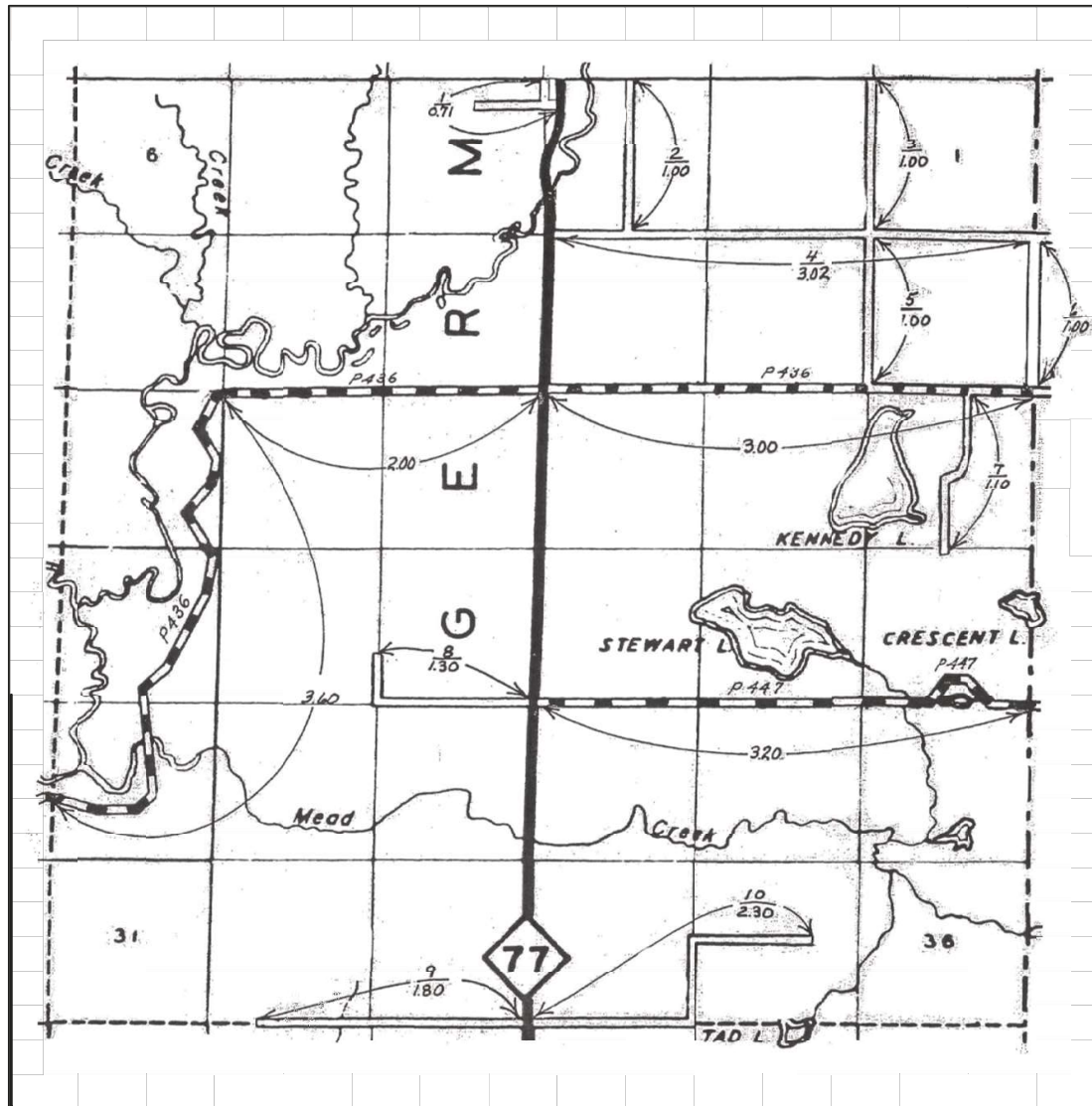
TOWNSHIP DOYLE
SECTION 2 T. 41N R. 14W
COUNTY SCHOOLCRAFT - 75

Schoolcraft County Road Commission
Certified December 31, 2024

Prepared By: Ian Stampfli, PE - County Highway Engineer
Schoolcraft County Road Commission

SEE MAP 9

SEE MAP 2



SEE MAP 39

LEGEND

COUNTY LINE	-----
CORPORATE LIMITS	-----
STATE TRUNKLINE	=====
COUNTY PRIMARY	=====
COUNTY LOCAL	=====
ADJACENT COUNTY	=====
CITY OR VILLAGE STREET	=====

PRIMARY

CR - 436 (FLOODWOOD ROAD) - 8.60 MILES
 CR - 447 (GRANT ROAD) - 3.20 MILES

LOCAL

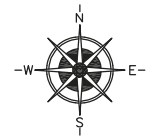
1. ROBINSON STREET - 0.71 MILES
2. CORNELL ROAD - 1.00 MILES
3. ZELLAR ROAD - 1.00 MILES
4. LUSTILLA ROAD - 3.02 MILES
5. ZELLAR ROAD - 1.00 MILES
6. COUNTY LINE ROAD - 1.00 MILES
7. BURNS ROAD - 1.10 MILES
8. MEAD ROAD - 1.30 MILES
9. W. EDGE ROAD - 1.80 MILES
10. E. EDGE ROAD - 2.30 MILES

NUMBER OF ROAD

LENGTH IN MILES - TO THE NEAREST 1/100

PRIMARY ROAD SYSTEM IS 11.80 MILES

LOCAL ROAD SYSTEM IS 14.23 MILES



SCALE 0 1/2 1 MILE
 ONE INCH EQUALS 3000 FEET

Certification Map
 of

TOWNSHIP GERMFASK

SECTION T. 44N R. 13W

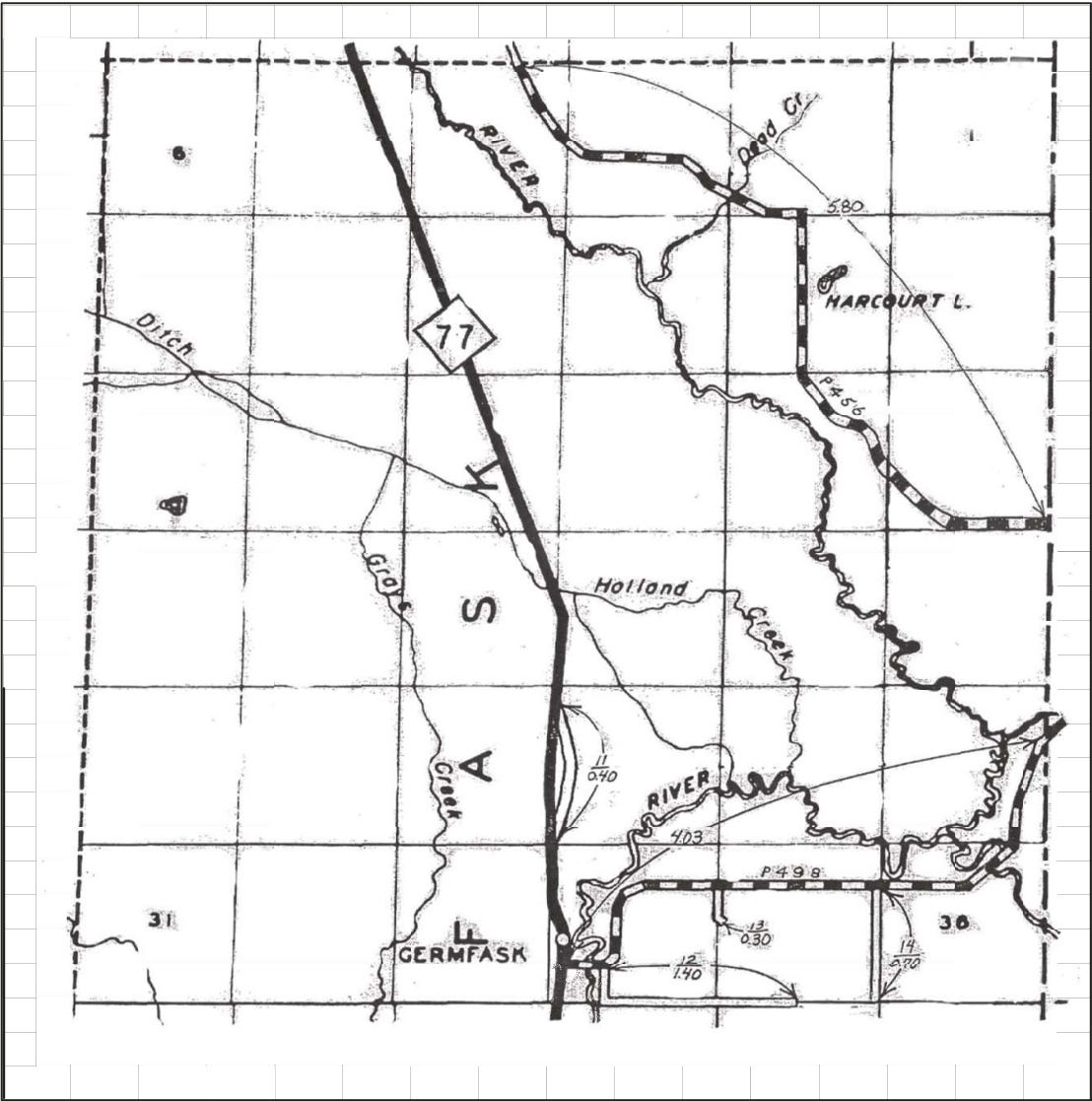
COUNTY SCHOOLCRAFT - 75

Schoolcraft County Road Commission
 Certified December 31, 2024

Prepared By: Ian Stamply, PE - County Highway Engineer
 Schoolcraft County Road Commission

SEE MAP 41

SEE MAP 1

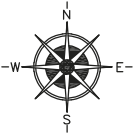


SEE MAP 8

LEGEND

COUNTY LINE	---
CORPORATE LIMITS	----
STATE TRUNKLINE	=====
COUNTY PRIMARY	=====
COUNTY LOCAL	=====
ADJACENT COUNTY	=====
CITY OR VILLAGE STREET	=====

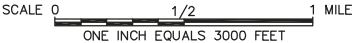
PRIMARY ROAD SYSTEM IS 9.83 MILES
LOCAL ROAD SYSTEM IS 2.80 MILES



- PRIMARY
CR - 498 (TEN CURVES ROAD) - 4.03 MILES
CR-456 (OLD SENEY ROAD) - 5.80 MILES
- LOCAL
11. SHEPPARD STREET - 0.40 MILES
12. NEWBORN ROAD - 1.40 MILES
13. SMITH ROAD - 0.30 MILES
14. ZELLAR ROAD - 0.70 MILES

NUMBER OF ROAD
LENGTH IN MILES - TO THE NEAREST 1/100

NOTE: SEE MAP 10 FOR ENLARGED VIEW OF GERMFASK STREETS.



Certification Map
of

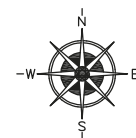
TOWNSHIP GERMFASK
SECTION _____ T. 45N R. 13W
COUNTY SCHOOLCRAFT - 75

Schoolcraft County Road Commission
Certified December 31, 2024

Prepared By: Ian Stamply, PE - County Highway Engineer
Schoolcraft County Road Commission

COUNTY LINE	----
CORPORATE LIMITS	- - - - -
STATE TRUNKLINE	=====
COUNTY PRIMARY	=====
COUNTY LOCAL	=====
ADJACENT COUNTY	=====
CITY OR VILLAGE	=====
STREET	=====

LOCAL ROAD SYSTEM IS 1.03 MILES



SCALE 0 600 1200 FEET
ONE INCH EQUALS 600 FEET

1. GREEN STREET - 462 FEET
2. MORRISON STREET - 330 FEET
3. KNAGGS STREET - 330 FEET
4. FRENCH STREET - 330 FEET
5. PINE STREET - 0.75 MILES (3965 FEET)

NUMBER OF ROAD
LENGTH IN MILES - TO THE NEAREST 1/100

NOTE: SEE MAP 9 FOR SURROUNDING
ROADS.

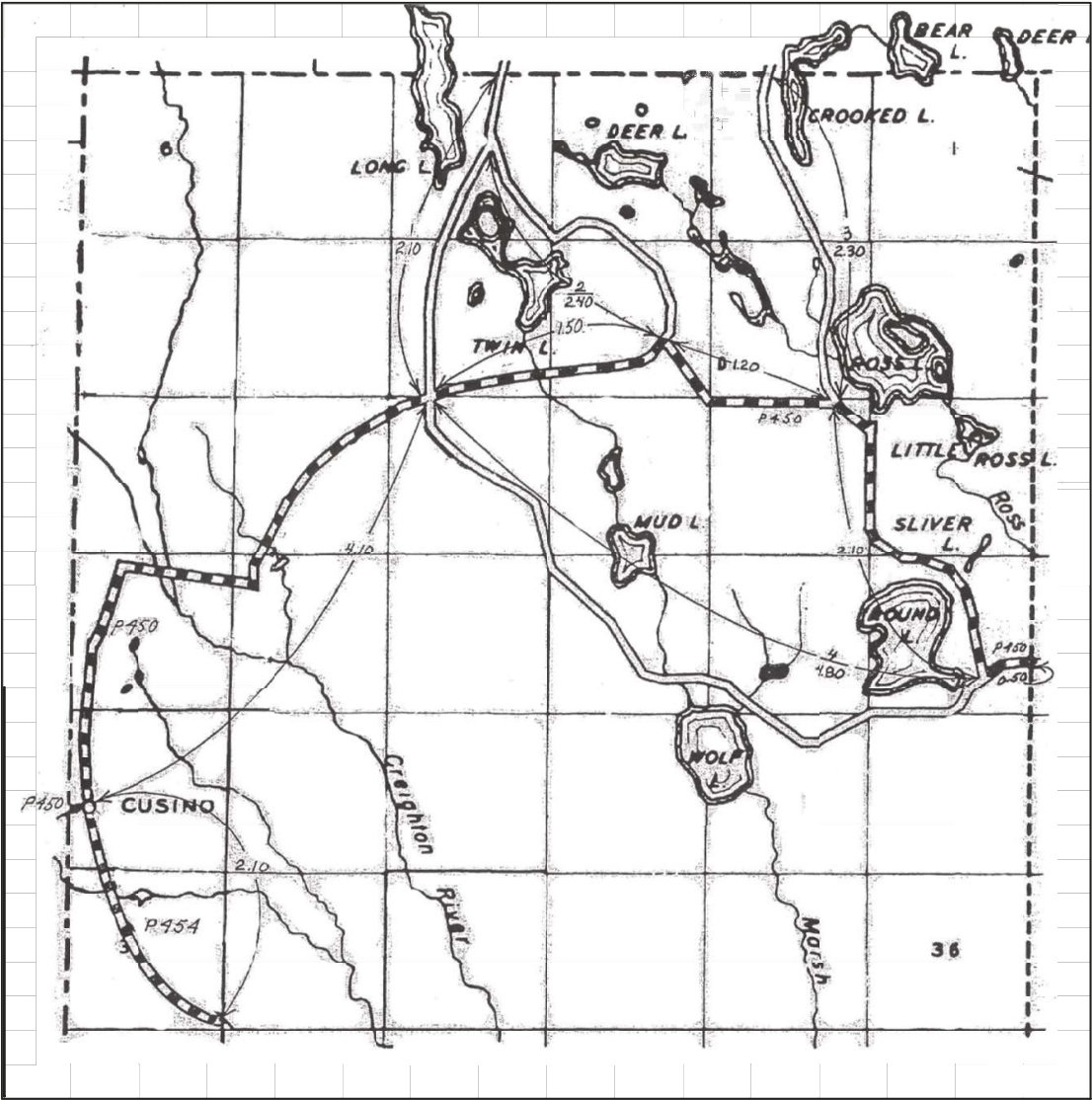
Certification Map
of

TOWNSHIP GERMFASK
SECTION 34 T. 45N R. 13W
COUNTY SCHOOLCRAFT - 75

Schoolcraft County Road Commission
Certified December 31, 2024

Prepared By: Ian Stampfli, PE - County Highway Engineer
Schoolcraft County Road Commission

ALGER COUNTY



SEE MAP 12

LEGEND

- COUNTY LINE
- CORPORATE LIMITS
- STATE TRUNKLINE
- COUNTY PRIMARY
- COUNTY LOCAL
- ADJACENT COUNTY
- CITY OR VILLAGE STREET

PRIMARY ROAD SYSTEM IS 11.50 MILES
LOCAL ROAD SYSTEM IS 11.60 MILES

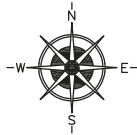
PRIMARY

- CR - 450 (FOX RIVER ROAD) - 9.40 MILES
- CR - 454 (CREIGHTON TRUCK TRL) - 2.10 MILES

LOCAL

- 1. LONG LAKE ROAD - 2.10 MILES
- 2. TWIN LAKE ROAD - 2.40 MILES
- 3. CROOKED LAKE ROAD (ROSS LK RD) - 2.30 MILES
- 4. WOLF LAKE ROAD - 4.80 MILES

NUMBER OF ROAD
LENGTH IN MILES - TO THE NEAREST 1/100



SCALE 0 1/2 1 MILE
ONE INCH EQUALS 3000 FEET

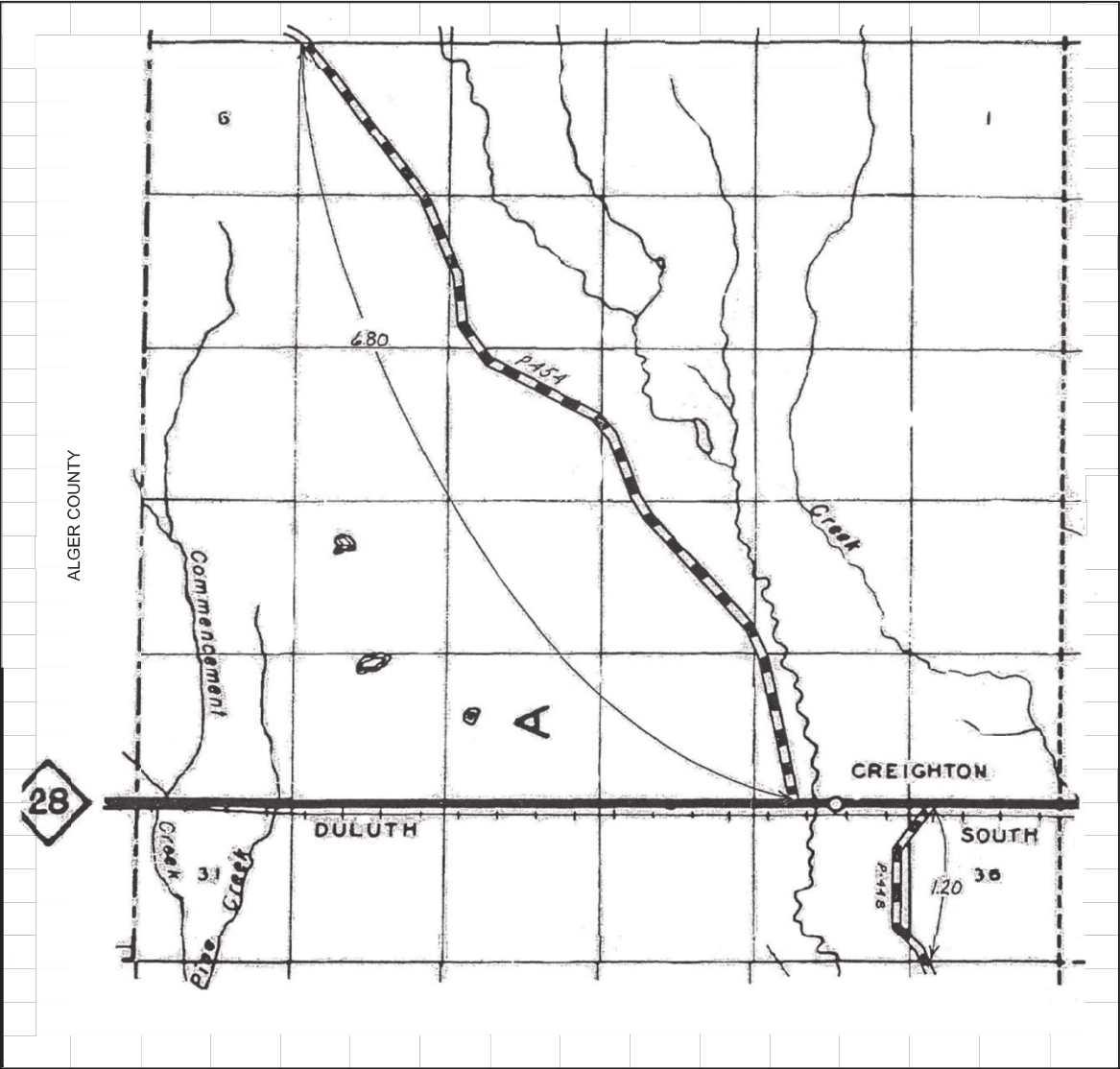
Certification Map
of

TOWNSHIP HIAWATHA
SECTION T. 47N R. 16W
COUNTY SCHOOLCRAFT - 75

Schoolcraft County Road Commission
Certified December 31, 2024

Prepared By: Ian Stampf, PE - County Highway Engineer
Schoolcraft County Road Commission

SEE MAP 11



SEE MAP 13

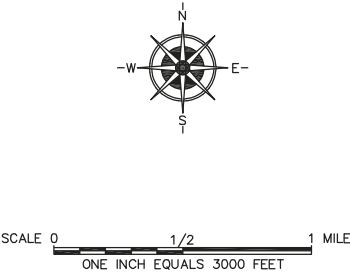
SEE MAP 45

- LEGEND
- COUNTY LINE
 - CORPORATE LIMITS
 - STATE TRUNKLINE
 - COUNTY PRIMARY
 - COUNTY LOCAL
 - ADJACENT COUNTY
 - CITY OR VILLAGE STREET

PRIMARY ROAD SYSTEM IS 8.00 MILES
LOCAL ROAD SYSTEM IS 0.00 MILES

PRIMARY
CR - 454 (CREIGHTON TRUCK TRL) - 6.80 MILES
CR - 448 (SOUTH CREIGHTON ROAD) - 1.20 MILES

LOCAL
NUMBER OF ROAD
LENGTH IN MILES - TO THE NEAREST 1/100

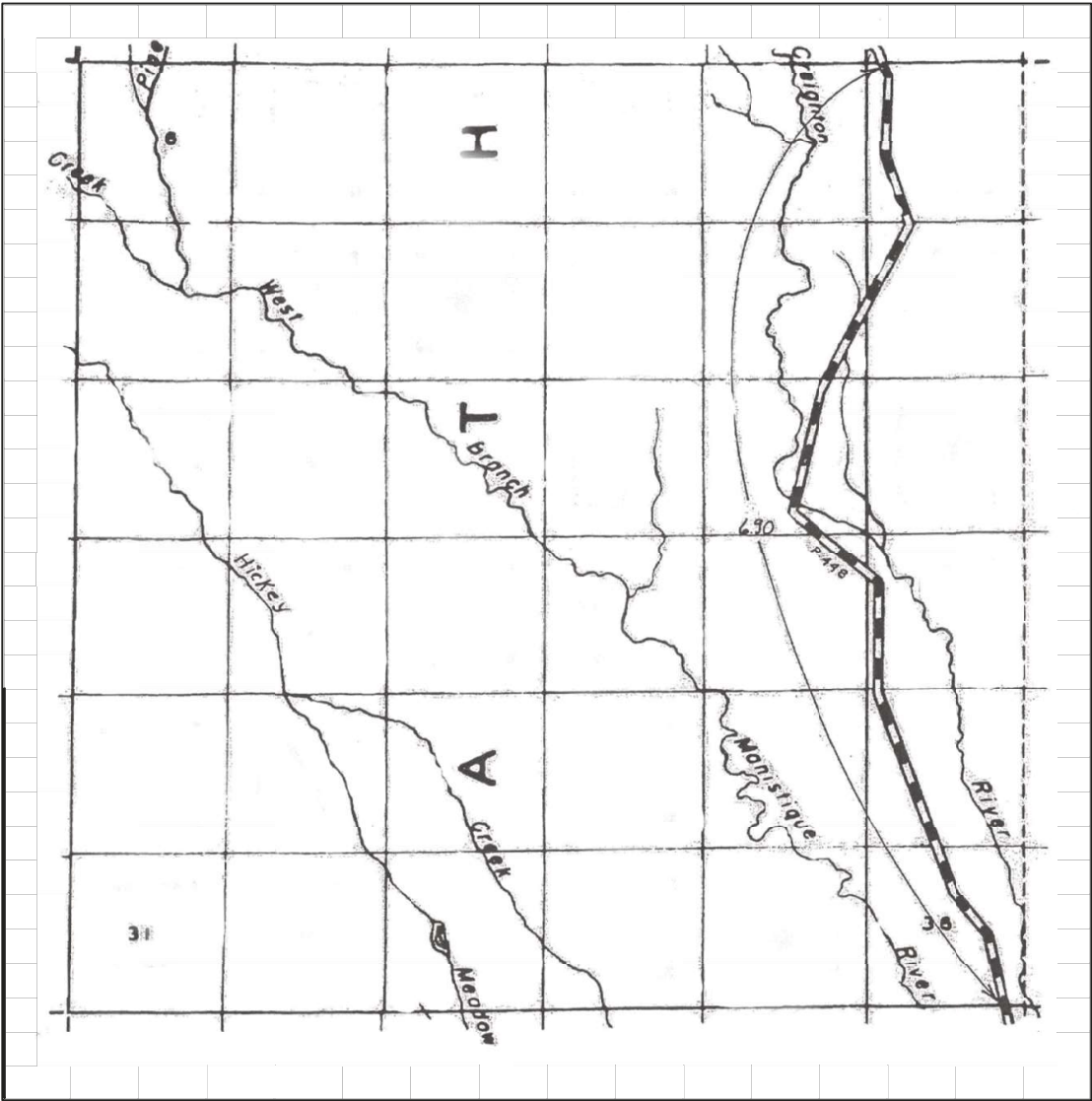


Certification Map
of
TOWNSHIP HIAWATHA
SECTION T. 46N R. 16W
COUNTY SCHOOLCRAFT - 75
Schoolcraft County Road Commission
Certified December 31, 2024

Prepared By: Ian Stampfly, PE - County Highway Engineer
Schoolcraft County Road Commission

SEE MAP 12

SEE MAP 17

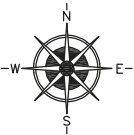


SEE MAP 14

SEE MAP 30

LEGEND	
COUNTY LINE	-----
CORPORATE LIMITS	-----
STATE TRUNKLINE	=====
COUNTY PRIMARY	=====
COUNTY LOCAL	=====
ADJACENT COUNTY	=====
CITY OR VILLAGE	=====
STREET	=====

PRIMARY ROAD SYSTEM IS 6.90 MILES
LOCAL ROAD SYSTEM IS 0.00 MILES



SCALE 0 1/2 1 MILE
ONE INCH EQUALS 3000 FEET

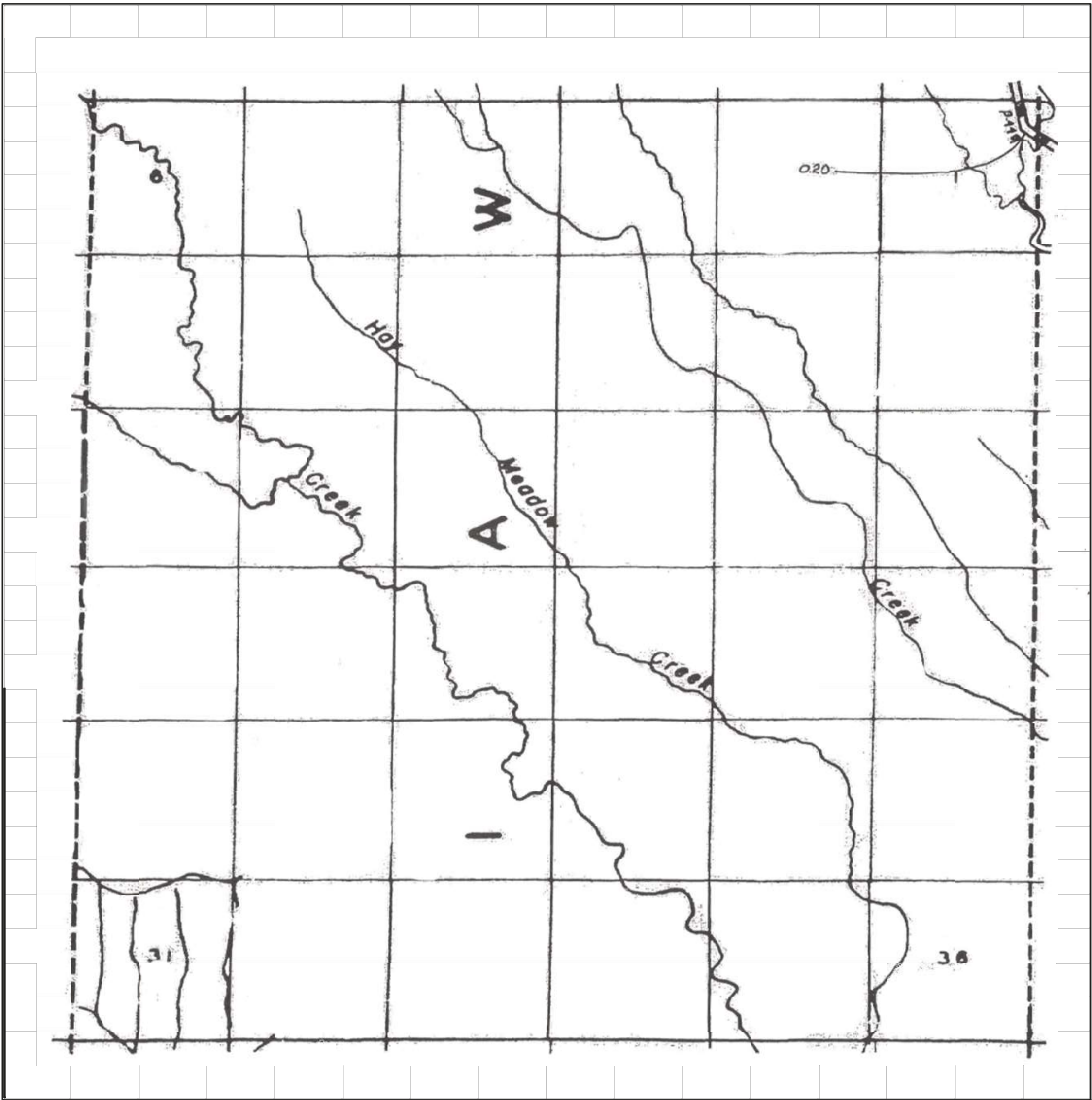
PRIMARY
CR - 448 (SOUTH CREIGHTON ROAD) - 6.90 MILES
LOCAL
NUMBER OF ROAD
LENGTH IN MILES - TO THE NEAREST 1/100

Certification Map
of
TOWNSHIP HIAWATHA
SECTION T. 45N R. 16W
COUNTY SCHOOLCRAFT - 75
Schoolcraft County Road Commission
Certified December 31, 2024

Prepared By: Ian Stampfly, PE - County Highway Engineer
Schoolcraft County Road Commission

SEE MAP 13

SEE MAP 23

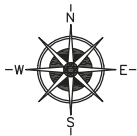


SEE MAP 15

SEE MAP 31

LEGEND	
COUNTY LINE	-----
CORPORATE LIMITS	-----
STATE TRUNKLINE	=====
COUNTY PRIMARY	=====
COUNTY LOCAL	=====
ADJACENT COUNTY	=====
CITY OR VILLAGE	=====
STREET	=====

PRIMARY ROAD SYSTEM IS 0.20 MILES
LOCAL ROAD SYSTEM IS 0.00 MILES



SCALE 0 1/2 1 MILE
ONE INCH EQUALS 3000 FEET

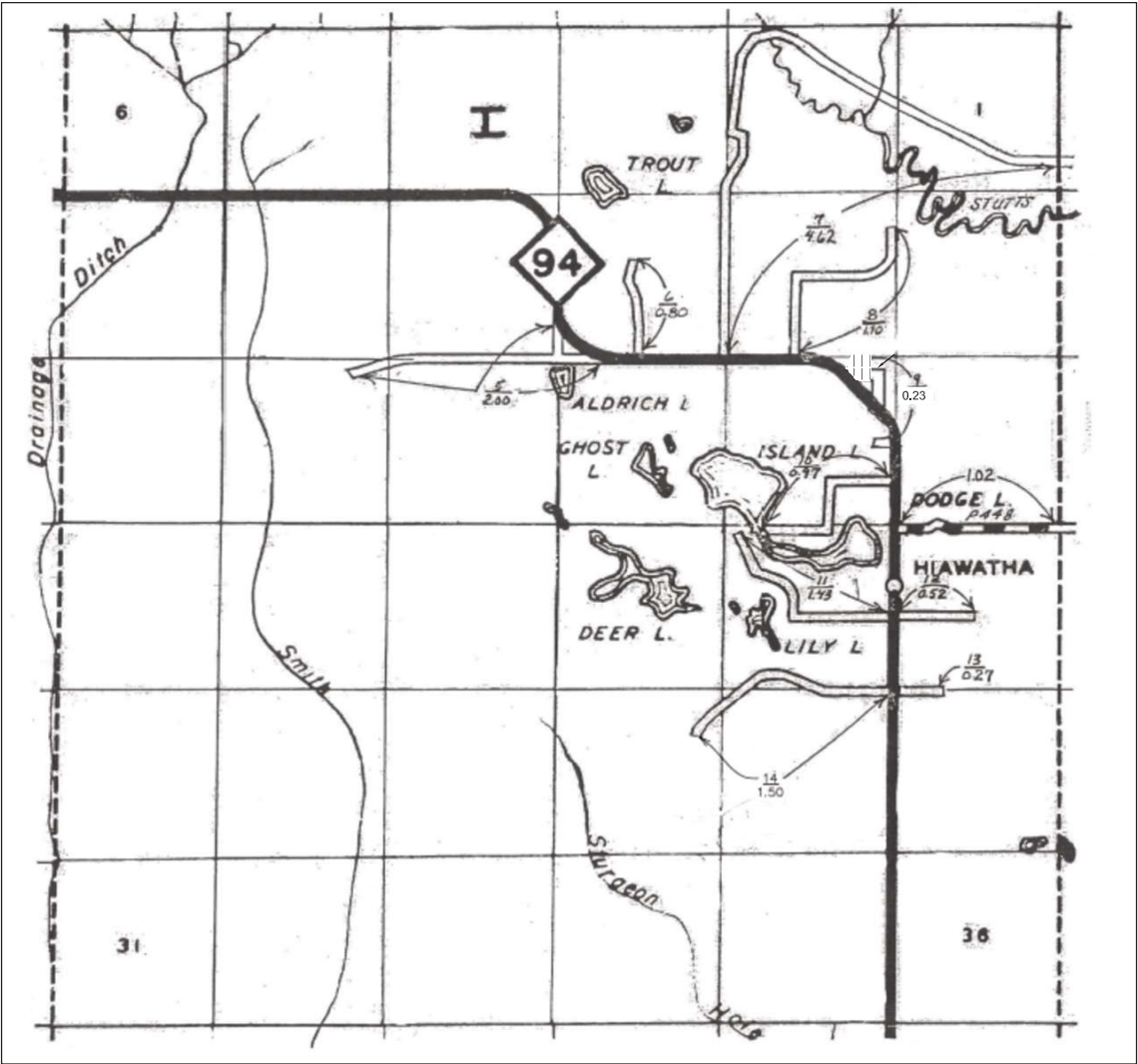
PRIMARY
CR - 448 (SOUTH CREIGHTON ROAD) - 0.20 MILES
LOCAL
NUMBER OF ROAD
LENGTH IN MILES - TO THE NEAREST 1/100

Certification Map
of
TOWNSHIP HIAWATHA
SECTION T. 44N R. 16W
COUNTY SCHOOLCRAFT - 75

Schoolcraft County Road Commission
Certified December 31, 2024

Prepared By: Ian Stampflly, PE - County Highway Engineer
Schoolcraft County Road Commission

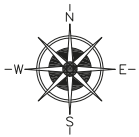
SEE MAP 14



SEE MAP 16

LEGEND	
COUNTY LINE	-----
CORPORATE LIMITS	-----
STATE TRUNKLINE	=====
COUNTY PRIMARY	=====
COUNTY LOCAL	=====
ADJACENT COUNTY	=====
CITY OR VILLAGE STREET	=====

PRIMARY ROAD SYSTEM IS 1.02 MILES
LOCAL ROAD SYSTEM IS 13.44 MILES



SCALE 0 1/2 1 MILE
ONE INCH EQUALS 3000 FEET

PRIMARY

CR - 448 (SMITH LAKE ROAD) - 1.02 MILES

LOCAL

- 5. HYLAND ROAD - 2.0 MILES
- 6. ALDRICH ROAD - 0.80 MILES
- 7. SOUTHSIDE ROAD - 4.62 MILES
- 8. HENDRICKSON ROAD - 1.10 MILES
- 9. RUGGLES ROAD - 0.23 MILES
- 10. ISLAND LAKE ROAD - 0.97 MILES
- 11. DODGE LAKE ROAD - 1.43 MILES
- 12. BROWN ROAD - 0.52 MILES
- 13. WOOD ROAD - 0.27 MILES
- 14. HIAWATHA STATION ROAD - 1.50 MILES

NUMBER OF ROAD
LENGTH IN MILES - TO THE NEAREST 1/100

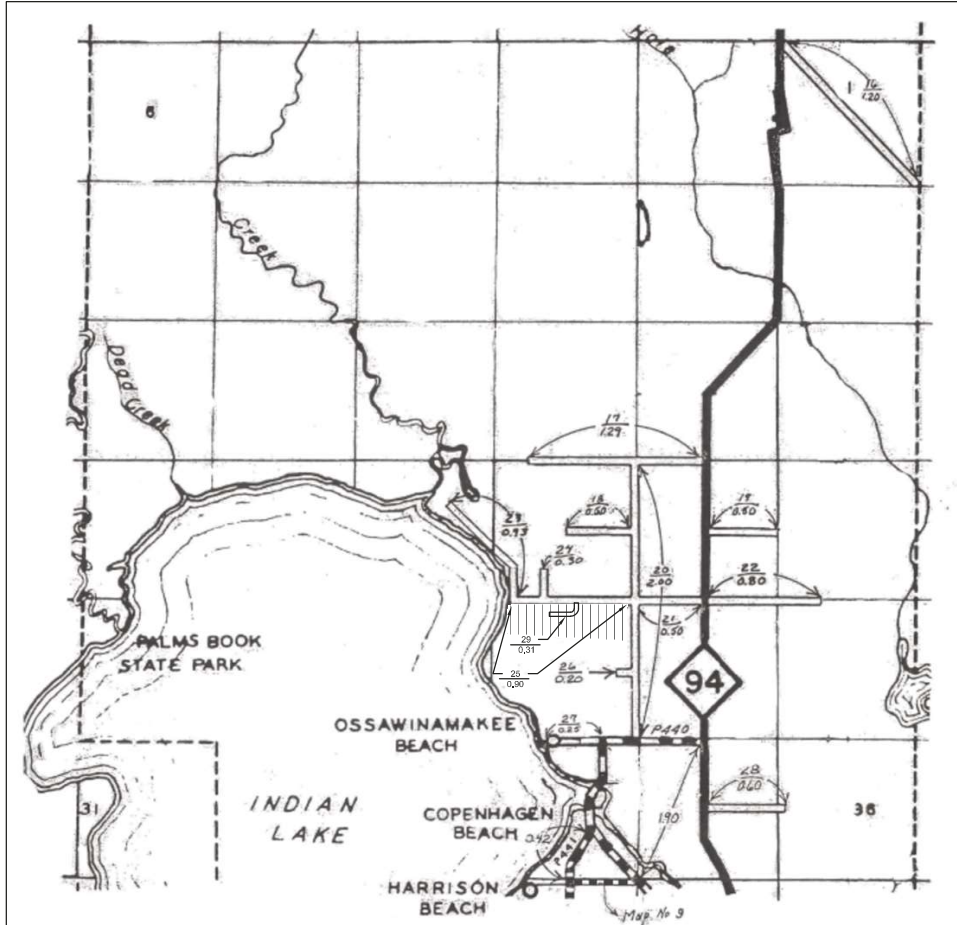
Certification Map
of

TOWNSHIP HIAWATHA
SECTION T. 43N R. 16W
COUNTY SCHOOLCRAFT - 75

Schoolcraft County Road Commission
Certified December 31, 2024

Prepared By: Ian Stampf, PE - County Highway Engineer
Schoolcraft County Road Commission

SEE MAP 15



SEE MAP 19

LEGEND

COUNTY LINE	-----
CORPORATE LIMITS	-----
STATE TRUNKLINE	=====
COUNTY PRIMARY	=====
COUNTY LOCAL	=====
ADJACENT COUNTY	=====
CITY OR VILLAGE STREET	=====

PRIMARY ROAD SYSTEM IS 2.32 MILES

LOCAL ROAD SYSTEM IS 10.28 MILES

PRIMARY

CR - 440 (STATE ROAD) - 1.90 MILES
CR - 441 (DANIELSON ROAD) - 0.42 MILES

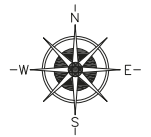
LOCAL

- 16. HIGH ROLLWAYS - 1.20 MILES
- 17. FREEMAN ROAD - 1.29 MILES
- 18. BLANFORD ROAD - 0.50 MILES
- 19. ADAMS ROAD - 0.50 MILES
- 20. BECKMAN ROAD - 2.00 MILES
- 21. DAWSON ROAD - 0.50 MILES
- 22. WHITMAN ROAD - 0.80 MILES
- 23. WAWAUSHNOSH DR - 0.93 MILES
- 24. FISETTE ROAD - 0.30 MILES
- 25. DAWSON ROAD - 0.90 MILES
- 26. TAYLOR ROAD - 0.20 MILES
- 27. LEDUC ROAD - 0.25 MILES
- 28. SWANSON ROAD - 0.60 MILES
- 29. GOLF COURSE ROAD - 0.31 MILES

NUMBER OF ROAD

LENGTH IN MILES - TO THE NEAREST 1/100

NOTE: SEE MAP 20 FOR OSSAWINAMAKEE RESORT SUBDIVISION.



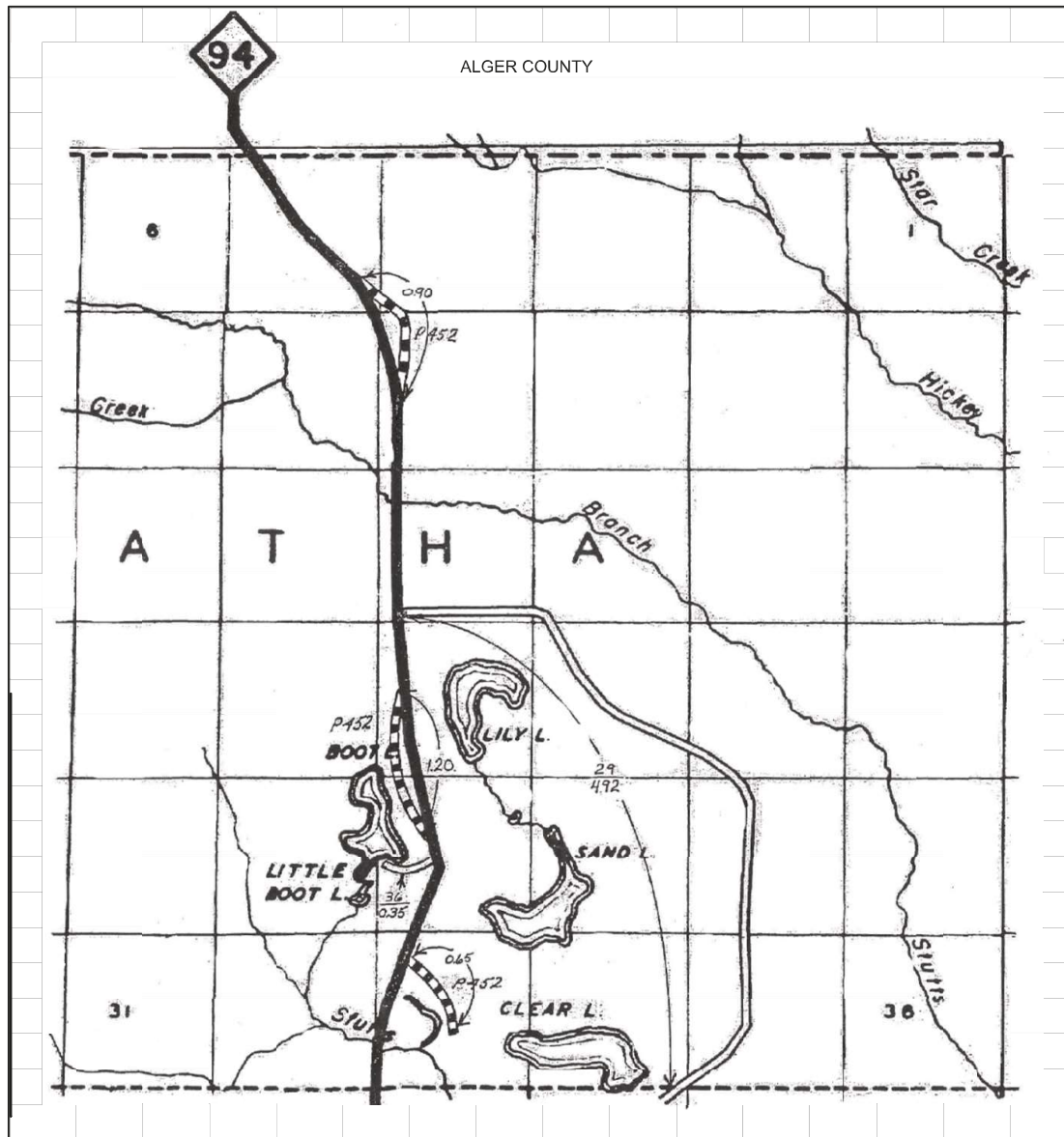
SCALE 0 1/2 1 MILE
ONE INCH EQUALS 3000 FEET

Certification Map
of

TOWNSHIP HIAWATHA
SECTION T. 42N R. 16W
COUNTY SCHOOLCRAFT - 75

Schoolcraft County Road Commission
Certified December 31, 2024

Prepared By: Ian Stampfly, PE - County Highway Engineer
Schoolcraft County Road Commission



LEGEND

COUNTY LINE	----
CORPORATE LIMITS	-----
STATE TRUNKLINE	=====
COUNTY PRIMARY	=====
COUNTY LOCAL	=====
ADJACENT COUNTY	=====
CITY OR VILLAGE STREET	=====

PRIMARY ROAD SYSTEM IS 2.75 MILES

LOCAL ROAD SYSTEM IS 5.27 MILES

PRIMARY

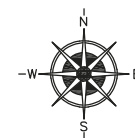
CR - 452 (GRAVES ROAD) - 0.90 MILES
 CR - 452 (BOOT LAKE ROAD) - 1.20 MILES
 CR - 452 (OLD M-94) - 0.65 MILES

LOCAL

29. CLEAR LAKE ROAD - 4.92 MILES
 36. BOOT LAKE COURT - 0.35 MILES

NUMBER OF ROAD

LENGTH IN MILES - TO THE NEAREST 1/100



SCALE 0 1/2 1 MILE
 ONE INCH EQUALS 3000 FEET

Certification Map
 of

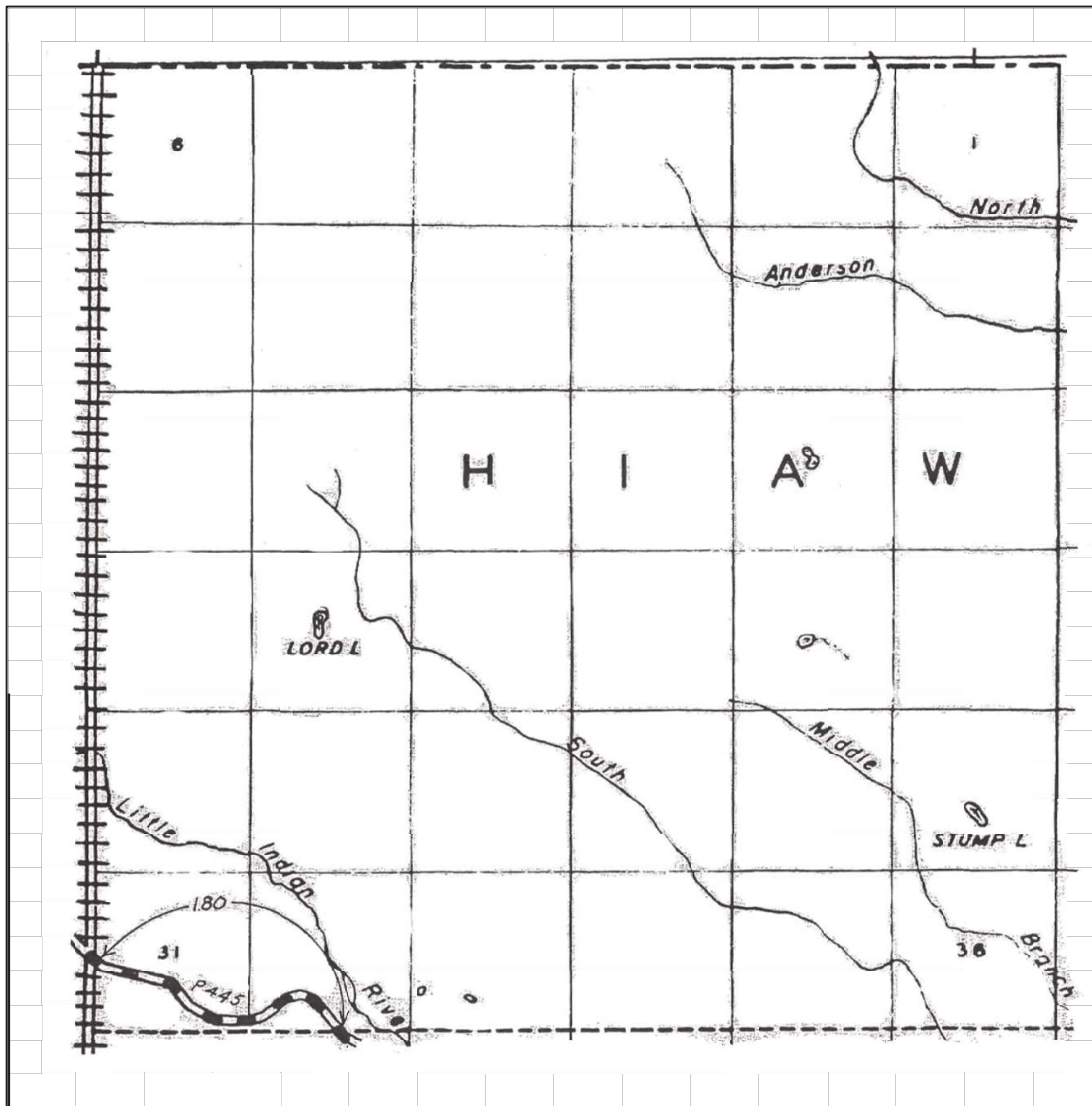
TOWNSHIP HIAWATHA
 SECTION T. 45N R. 17W
 COUNTY SCHOOLCRAFT - 75

Schoolcraft County Road Commission
 Certified December 31, 2024

Prepared By: Ian Stampf, PE - County Highway Engineer
 Schoolcraft County Road Commission

SEE MAP 23

ALGER COUNTY



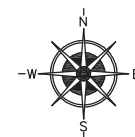
SEE MAP 26

LEGEND

COUNTY LINE	-----
CORPORATE LIMITS	-----
STATE TRUNKLINE	=====
COUNTY PRIMARY	=====
COUNTY LOCAL	=====
ADJACENT COUNTY	=====
CITY OR VILLAGE STREET	=====

PRIMARY ROAD SYSTEM IS 1.80 MILES

LOCAL ROAD SYSTEM IS 0.00 MILES



SCALE 0 1/2 1 MILE
ONE INCH EQUALS 3000 FEET

PRIMARY

CR - 445 (KENTUCKY TRAIL) - 1.80 MILES

LOCAL

NUMBER OF ROAD

LENGTH IN MILES - TO THE NEAREST 1/100

Certification Map
of

TOWNSHIP HIAWATHA

SECTION _____ T. 45N R. 18W

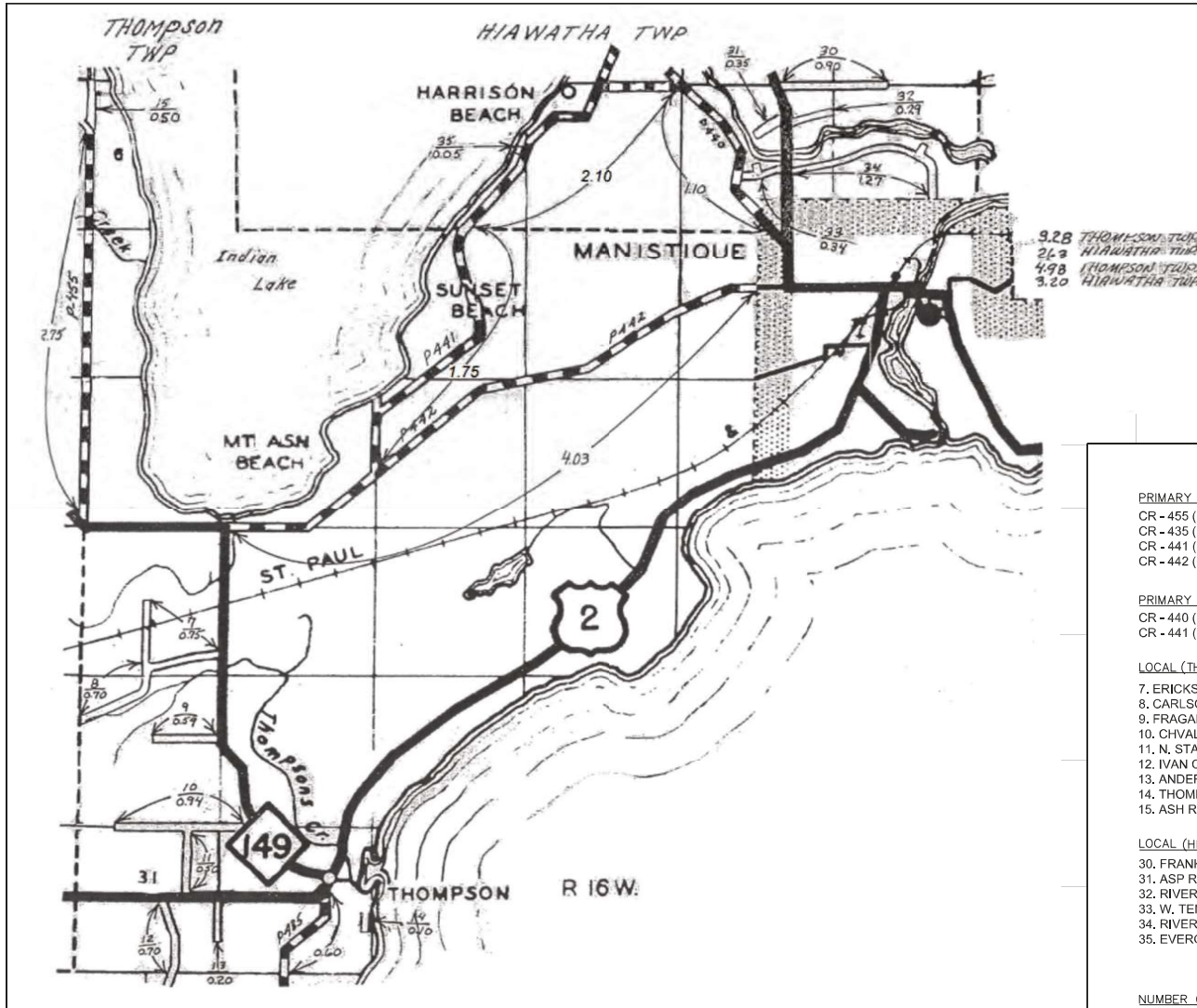
COUNTY SCHOOLCRAFT - 75

Schoolcraft County Road Commission
Certified December 31, 2024

Prepared By: Ian Stampf, PE - County Highway Engineer
Schoolcraft County Road Commission

SEE MAP 16 OR MAP 25

SEE MAP 27



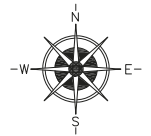
SEE MAP 47

LEGEND

COUNTY LINE	-----
CORPORATE LIMITS	-----
STATE TRUNKLINE	=====
COUNTY PRIMARY	=====
COUNTY LOCAL	=====
ADJACENT COUNTY	=====
CITY OR VILLAGE STREET	=====

PRIMARY ROAD SYSTEM IS 12.33 MILES

LOCAL ROAD SYSTEM IS 8.18 MILES



SCALE 0 1/2 1 MILE
ONE INCH EQUALS 3000 FEET

PRIMARY (THOMPSON)

CR - 455 (RILEY ROAD) - 2.75 MILES
CR - 435 (LITTLE HARBOR ROAD) - 0.60 MILES
CR - 441 (DANIELSON ROAD) - 1.75 MILES
CR - 442 (OLD US-2) - 4.03 MILES

PRIMARY (HIAWATHA)

CR - 440 (STATE ROAD) - 1.10 MILES
CR - 441 (DANIELSON ROAD) - 2.10 MILES

LOCAL (THOMPSON)

7. ERICKSON ROAD - 0.75 MILES
8. CARLSON ROAD - 0.70 MILES
9. FRAGALE ROAD - 0.59 MILES
10. CHVALA ROAD - 0.94 MILES
11. N. STANLEY ROAD - 0.50 MILES
12. IVAN CARLSON ROAD - 0.70 MILES
13. ANDERSON ROAD - 0.20 MILES
14. THOMPSON STREET - 0.10 MILES
15. ASH ROAD - 0.50 MILES

LOCAL (HIAWATHA)

30. FRANKOVICH ROAD - 0.90 MILES
31. ASP ROAD - 0.35 MILES
32. RIVERS BEND ROAD - 0.29 MILES
33. W. TENNANT DR/JERRY LARRY LANE - 0.34 MILES
34. RIVERVIEW DR - 1.27 MILES
35. EVERGREEN BEACH DR - 0.05 MILES

NUMBER OF ROAD

LENGTH IN MILES - TO THE NEAREST 1/100

NOTE: SEE MAP 21 FOR HARRISON BEACH SUBDIVISION. SEE MAP 22 FOR EVERGREEN DRIVE AND CARLSON ROAD. SEE MAP 50 FOR ENLARGED VIEW OF THOMPSON STREETS.

Certification Map
of

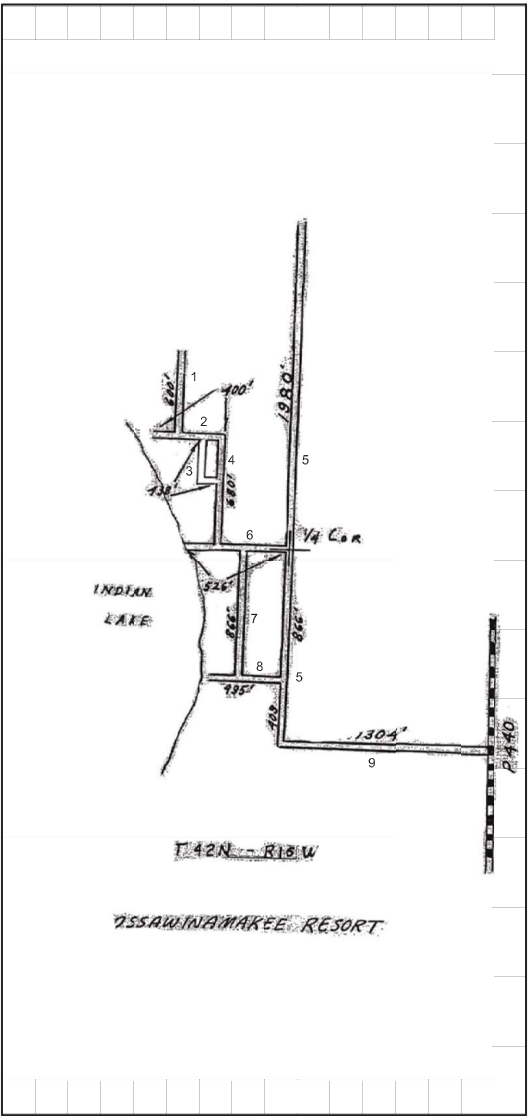
TOWNSHIP THOMPSON / HIAWATHA

SECTION T. 41N R. 16W

COUNTY SCHOOLCRAFT - 75

Schoolcraft County Road Commission
Certified December 31, 2024

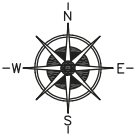
Prepared By: Ian Stampf, PE - County Highway Engineer
Schoolcraft County Road Commission



LEGEND

COUNTY LINE	-----
CORPORATE LIMITS	-----
STATE TRUNKLINE	=====
COUNTY PRIMARY	=====
COUNTY LOCAL	=====
ADJACENT COUNTY	=====
CITY OR VILLAGE STREET	=====

PRIMARY ROAD SYSTEM IS 0.00 MILES
 LOCAL ROAD SYSTEM IS 1.62 MILES



SCALE 0 600 1200 FEET
 ONE INCH EQUALS 600 FEET

LOCAL

- MARY STREET - 600 FEET
- NICKELSON STREET - 400 FEET
- CEDAR STREET - 438 FEET
- PINE STREET - 680 FEET
- BIRCH STREET - 0.60 MILES (3149 FEET)
- MAPLE STREET - 526 FEET
- OAK STREET - 866 FEET
- ELM STREET - 495 FEET
- ARROWHEAD ROAD - 0.25 MILES (1304 FEET)

NUMBER OF ROAD

LENGTH IN MILES - TO THE NEAREST 1/100

NOTE: SEE MAP 16 FOR SURROUNDING
 ROADS.

Certification Map
 of

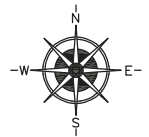
TOWNSHIP HIAWATHA
 SECTION 27 T. 42N R. 16W
 COUNTY SCHOOLCRAFT - 75

Schoolcraft County Road Commission
 Certified December 31, 2024

Prepared By: Ian Stampfly, PE - County Highway Engineer
 Schoolcraft County Road Commission

COUNTY LINE	----
CORPORATE LIMITS	----
STATE TRUNKLINE	=====
COUNTY PRIMARY	=====
COUNTY LOCAL	=====
ADJACENT COUNTY	=====
CITY OR VILLAGE STREET	=====

LOCAL ROAD SYSTEM IS 1.19 MILES



SCALE 0 600 1200 FEET
ONE INCH EQUALS 600 FEET

1. INDIAN TRAIL - 485 FEET
2. MANISTIQUE AVENUE - 876 FEET
3. 3RD STREET - 528 FEET
4. 4TH STREET - 264 FEET
5. HARRISON AVENUE - 1000 FEET
6. 5TH STREET - 792 FEET
7. 6TH STREET - 264 FEET
8. 7TH STREET - 496 FEET
9. WASHINGTON AVENUE - 1000 FEET
10. CLEVELAND AVENUE - 600 FEET
11. HIAWATHA AVENUE - 500 FEET

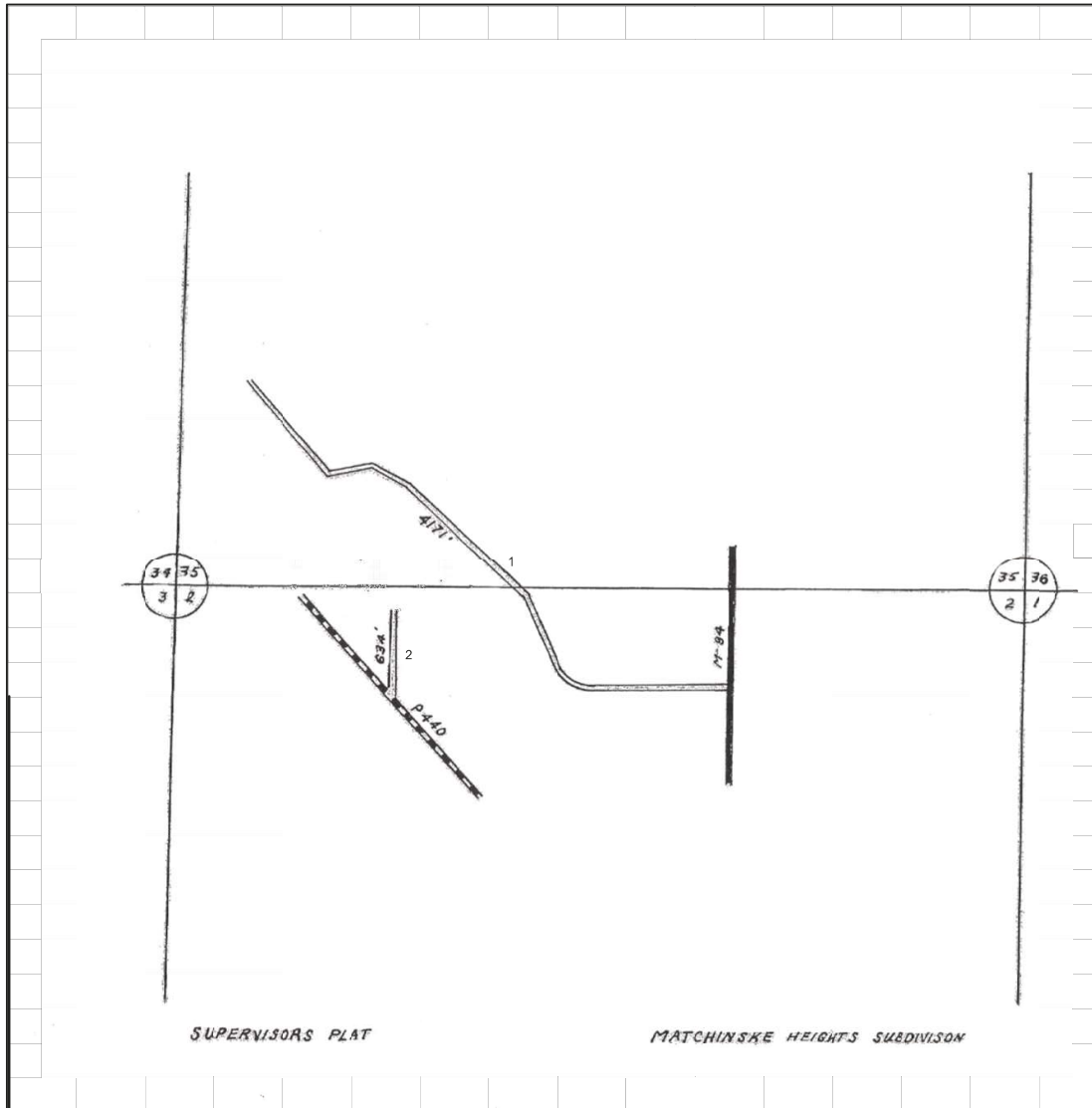
LENGTH IN MILES - TO THE NEAREST 1/100

NOTE: SEE MAP 19 FOR SURROUNDING
ROADS.

TOWNSHIP HIAWATHA
SECTION 3 T. 41N R. 16W
COUNTY SCHOOLCRAFT - 75

Schoolcraft County Road Commission
Certified December 31, 2024

MAP 21

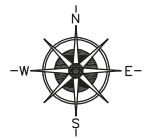


LEGEND

COUNTY LINE	----
CORPORATE LIMITS	----
STATE TRUNKLINE	=====
COUNTY PRIMARY	=====
COUNTY LOCAL	=====
ADJACENT COUNTY	=====
CITY OR VILLAGE STREET	=====

PRIMARY ROAD SYSTEM IS 0.00 MILES

LOCAL ROAD SYSTEM IS 0.91 MILES



LOCAL

1. EVERGREEN ROAD - 0.79 MILES (4171 FEET)
2. CARLSON ROAD - 634 FEET

NUMBER OF ROAD

LENGTH IN MILES - TO THE NEAREST 1/100

NOTE: SEE MAP 19 FOR SURROUNDING ROADS.

SCALE 0 600 1200 FEET
ONE INCH EQUALS 600 FEET

Certification Map
of

TOWNSHIP HIAWATHA

SECTION 2 T. 41N R. 16W

SECTION 35 T. 42N R. 16W

COUNTY SCHOOLCRAFT - 75

Schoolcraft County Road Commission
Certified December 31, 2024

Prepared By: Ian Stamply, PE - County Highway Engineer
Schoolcraft County Road Commission

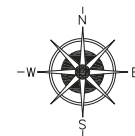
SEE MAP 17

LEGEND

COUNTY LINE
 CORPORATE LIMITS
 STATE TRUNKLINE
 COUNTY PRIMARY
 COUNTY LOCAL
 ADJACENT COUNTY
 CITY OR VILLAGE
 STREET

PRIMARY ROAD SYSTEM IS 8.18 MILES

LOCAL ROAD SYSTEM IS 5.16 MILES



SCALE 0 1/2 1 MILE
 ONE INCH EQUALS 3000 FEET

PRIMARY (INWOOD)
 CR - 437 (THUNDER LAKE ROAD) - 5.40 MILES
 CR - 444 (DELTA CR-440) - 0.33 MILES
 CR - 445 (KENTUCKY TRAIL) - 0.30 MILES

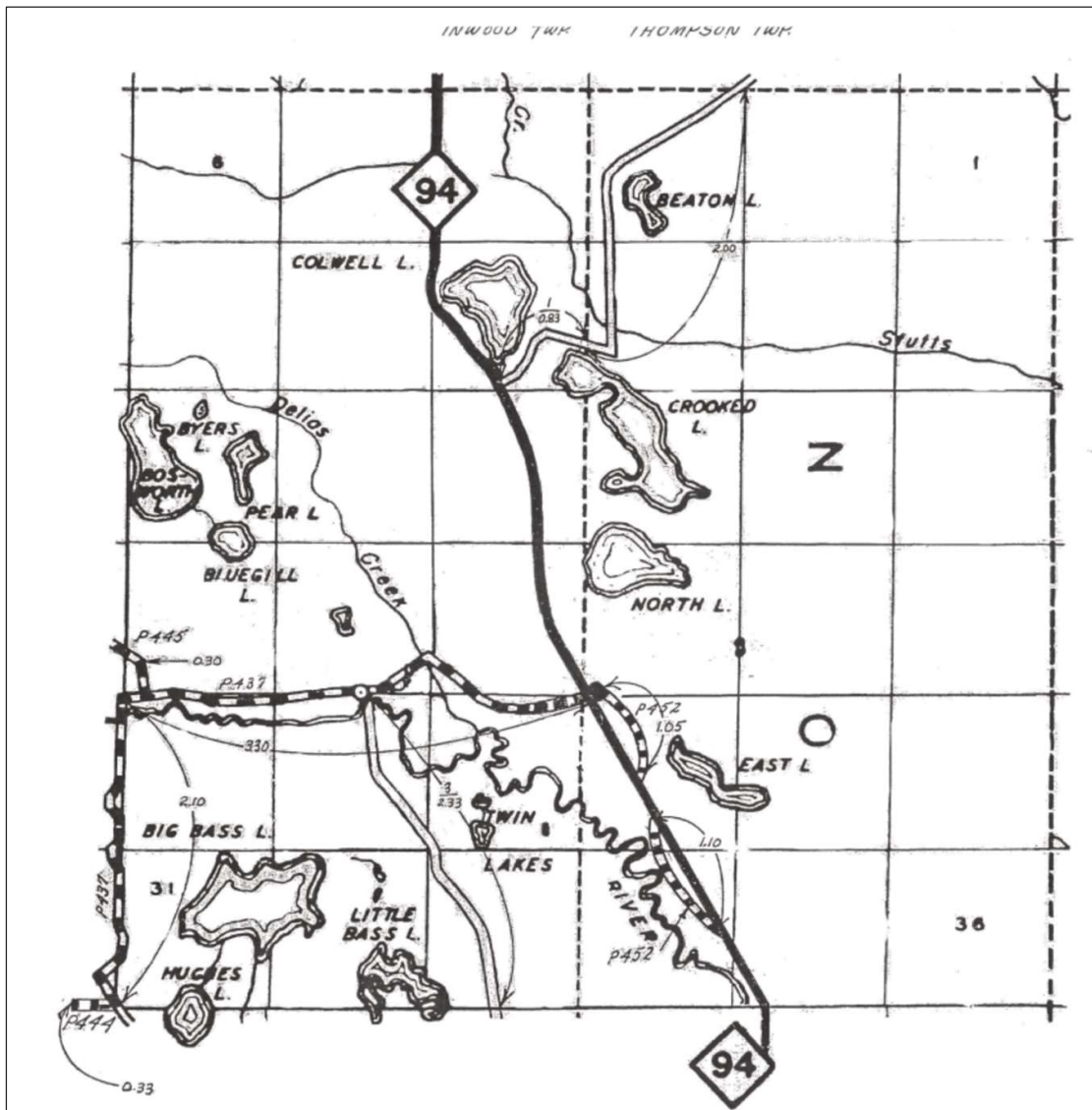
PRIMARY (THOMPSON)
 CR - 452 (OLD M-94) - 2.15 MILES

LOCAL (INWOOD)
 1. CLEAR LAKE ROAD - 0.83 MILES
 3. BASS LAKE ROAD - 2.33 MILES

LOCAL (THOMPSON)
 1. CLEAR LAKE ROAD - 2.00 MILES

NUMBER OF ROAD
 LENGTH IN MILES - TO THE NEAREST 1/100

SEE MAP 14



SEE MAP 24

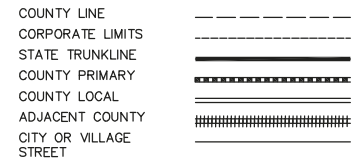
Certification Map
 of

TOWNSHIP INWOOD / THOMPSONSECTION T. 44N R. 17WCOUNTY SCHOOLCRAFT - 75

Schoolcraft County Road Commission
 Certified December 31, 2024

Prepared By: Ian Stampfl, PE - County Highway Engineer
 Schoolcraft County Road Commission

LEGEND



PRIMARY (INWOOD)
CR - 437 (THUNDER LAKE ROAD) - 7.05 MILES
CR - 449 (8 MILE CUT ACROSS ROAD) - 2.10 MILES

PRIMARY (THOMPSON)
CR - 449 (8 MILE CUT ACROSS ROAD) - 6.30 MILES

LOCAL (INWOOD)
4. BASS LAKE ROAD - 2.74 MILES
5. DUMP ROAD - 0.13 MILES
6. RAMSDAM ROAD - 0.53 MILES
7. BLOOM ROAD - 0.60 MILES
8. MINTONYE ROAD - 0.95 MILES

LOCAL (THOMPSON)
2. BASS LAKE ROAD - 2.55 MILES

NUMBER OF ROAD
LENGTH IN MILES - TO THE NEAREST 1/100

Certification Map
of

TOWNSHIP INWOOD / THOMPSON
SECTION T. 43N R. 17W
COUNTY SCHOOLCRAFT - 75

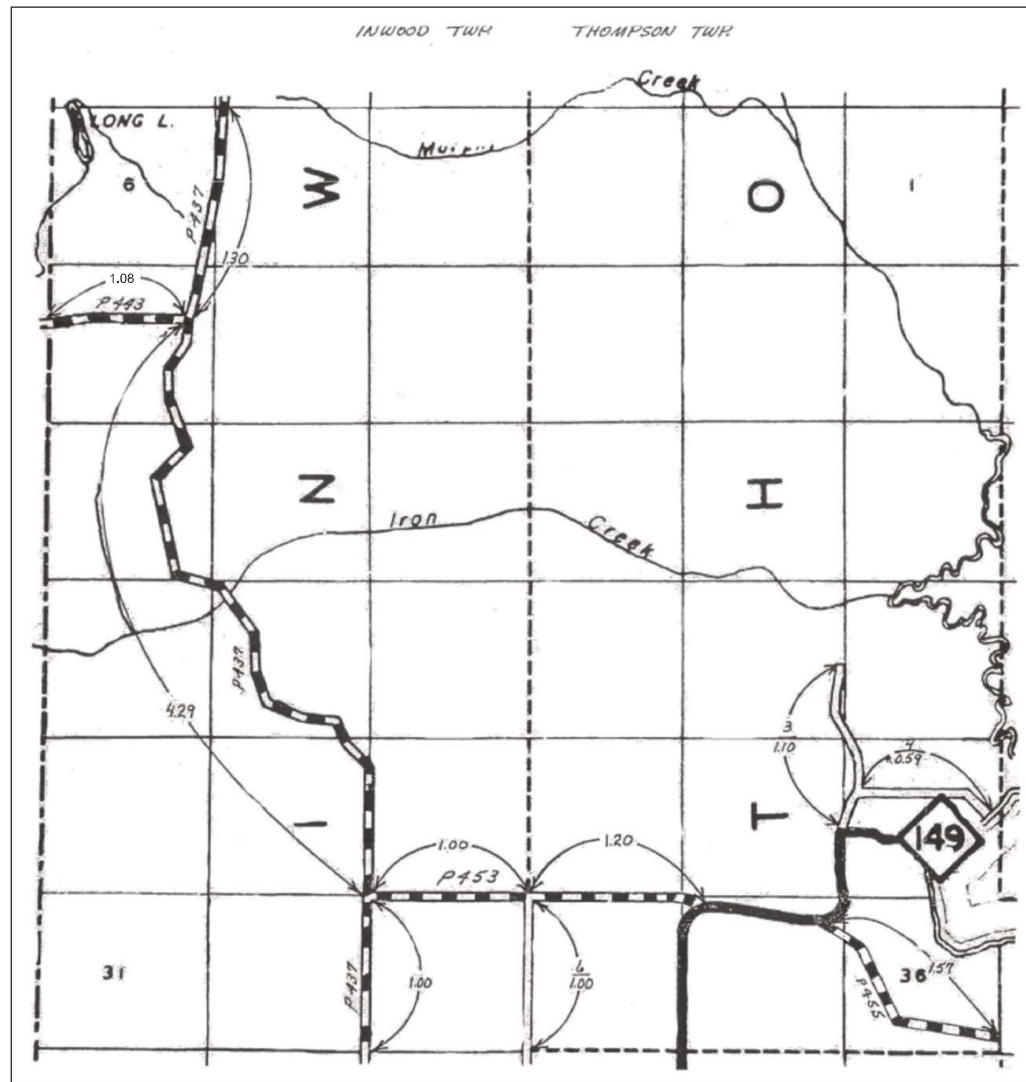
Schoolcraft County Road Commission
Certified December 31, 2024

Prepared By: Ian Stampfly, PE - County Highway Engineer
Schoolcraft County Road Commission

MAP 24

SEE MAP 17

DELTA COUNTY



SEE MAP 27

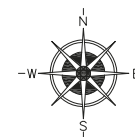
SEE MAP 19

LEGEND

COUNTY LINE	---
CORPORATE LIMITS	----
STATE TRUNKLINE	=====
COUNTY PRIMARY	=====
COUNTY LOCAL	=====
ADJACENT COUNTY	=====
CITY OR VILLAGE STREET	=====

PRIMARY ROAD SYSTEM IS 11.44 MILES

LOCAL ROAD SYSTEM IS 2.69 MILES



SCALE 0 1/2 1 MILE
ONE INCH EQUALS 3000 FEET

PRIMARY (INWOOD)

CR - 437 (THUNDER LAKE ROAD) - 6.59 MILES
CR - 443 (CAMP 7 ROAD) - 1.08 MILES
CR - 453 MILLER ROAD - 1.00 MILES

PRIMARY (THOMPSON)

CR - 453 MILLER ROAD - 1.20 MILES
CR - 455 RILEY ROAD - 1.57 MILES

LOCAL (THOMPSON)

3. SAWMILL ROAD - 1.10 MILES
4. FISHINGSITE ROAD - 0.59 MILES
6. PETERSON ROAD - 1.00 MILES

NUMBER OF ROAD

LENGTH IN MILES - TO THE NEAREST 1/100

Certification Map
of

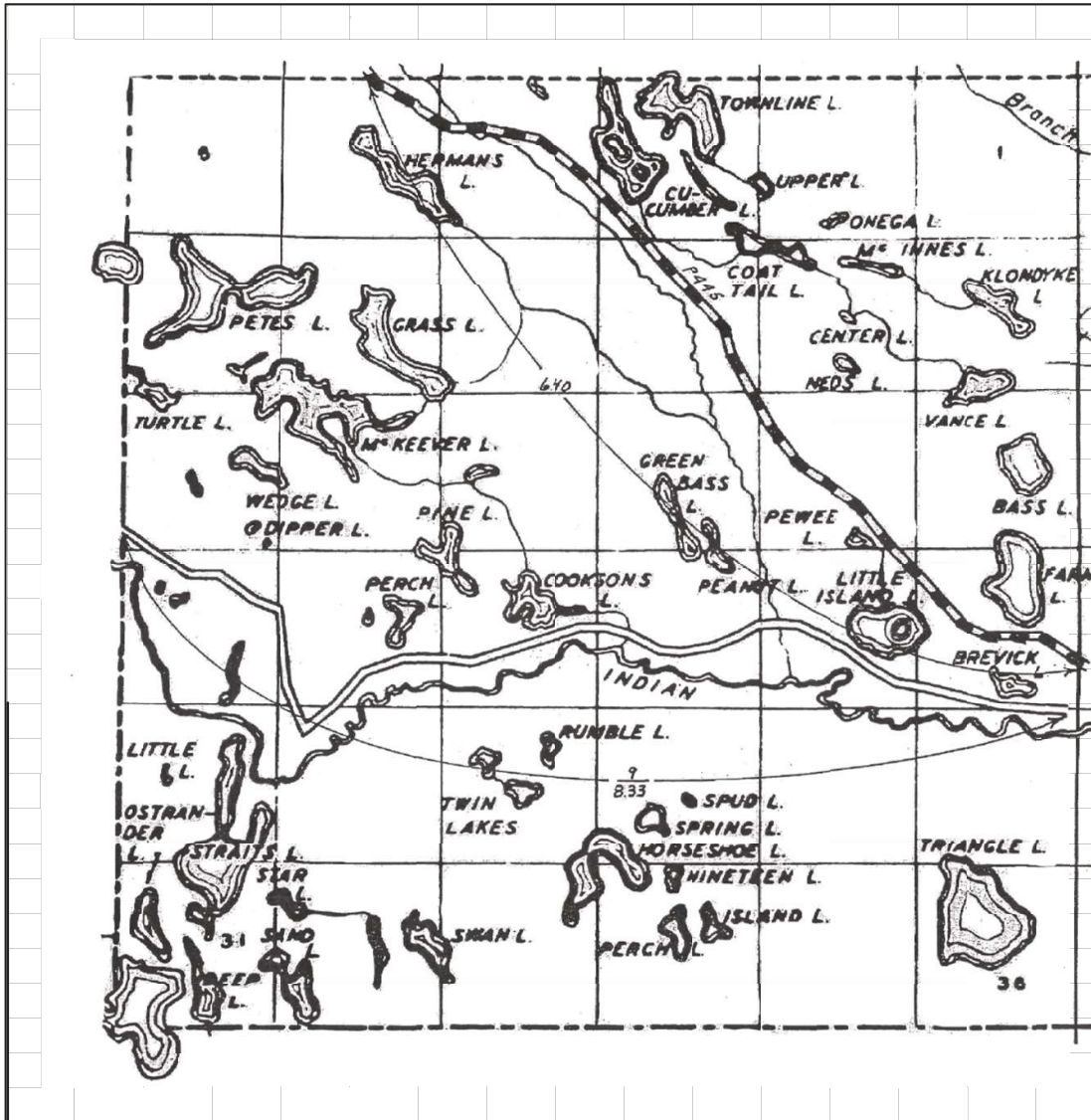
TOWNSHIP INWOOD / THOMPSONSECTION T. 42N R. 17WCOUNTY SCHOOLCRAFT - 75

Schoolcraft County Road Commission
Certified December 31, 2024

Prepared By: Ian Stampf, PE - County Highway Engineer
Schoolcraft County Road Commission

SEE MAP 18

ALGER COUNTY



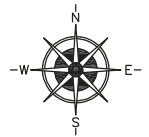
DELTA COUNTY

LEGEND

- COUNTY LINE
- CORPORATE LIMITS
- STATE TRUNKLINE
- COUNTY PRIMARY
- COUNTY LOCAL
- ADJACENT COUNTY
- CITY OR VILLAGE STREET

PRIMARY ROAD SYSTEM IS 6.40 MILES

LOCAL ROAD SYSTEM IS 8.33 MILES



SCALE 0 1/2 1 MILE
ONE INCH EQUALS 3000 FEET

PRIMARY
CR - 445 KENTUCKY TRAIL - 6.40 MILES

LOCAL
9. LITTLE INDIAN ROAD - 8.33 MILES

NUMBER OF ROAD
LENGTH IN MILES - TO THE NEAREST 1/100

NOTE: SEE MAP 30 FOR OSTRANDER LAKE ROAD.

SEE MAP 23

Certification Map
of

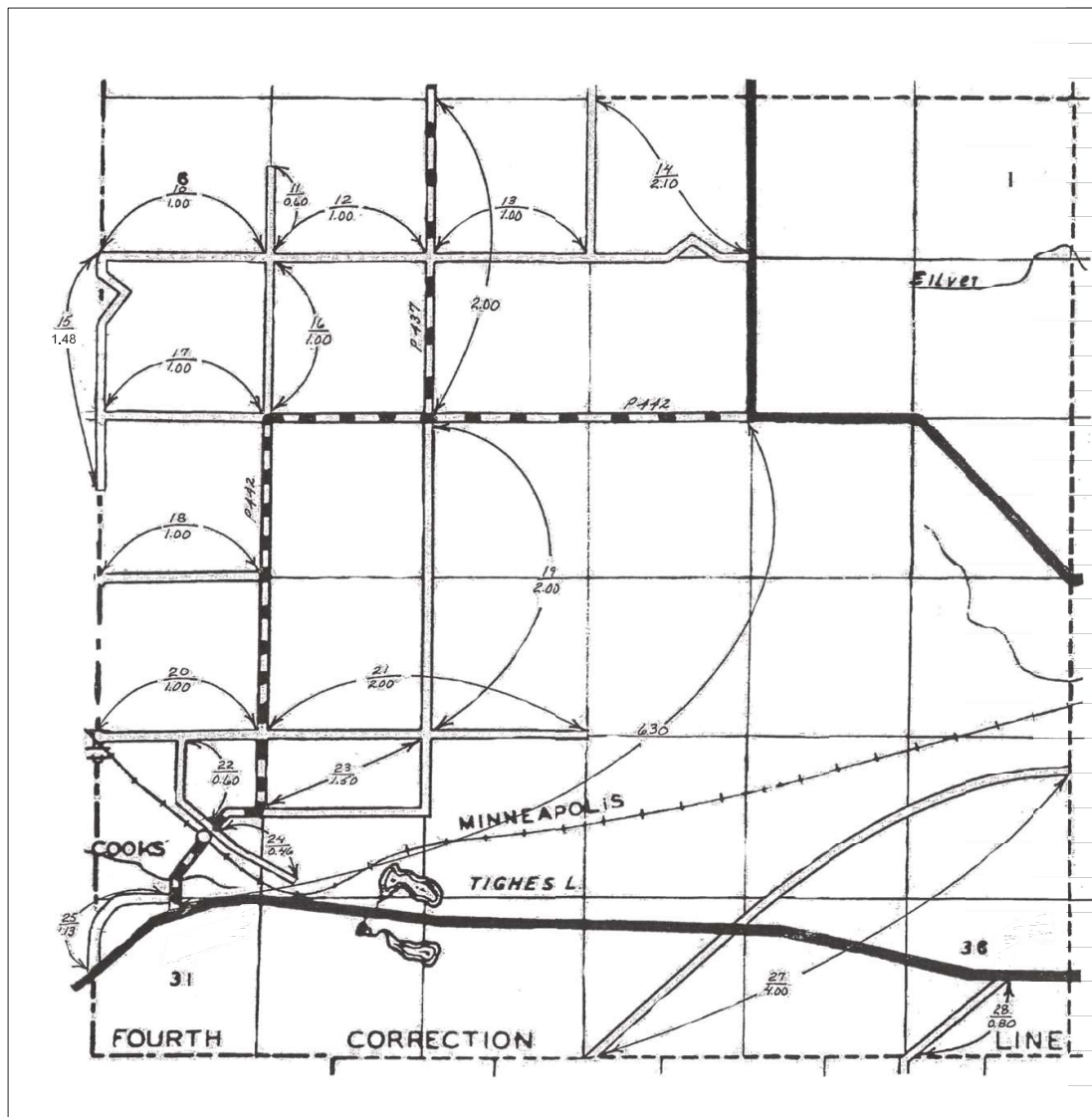
TOWNSHIP INWOOD
SECTION T. 44N R. 18W
COUNTY SCHOOLCRAFT - 75

Schoolcraft County Road Commission
Certified December 31, 2024

Prepared By: Ian Stampfl, PE - County Highway Engineer
Schoolcraft County Road Commission

SEE MAP 25

DELTA COUNTY



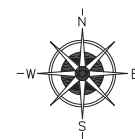
SEE MAP 47

LEGEND

COUNTY LINE	-----
CORPORATE LIMITS	-----
STATE TRUNKLINE	=====
COUNTY PRIMARY	=====
COUNTY LOCAL	=====
ADJACENT COUNTY	=====
CITY OR VILLAGE STREET	=====

PRIMARY ROAD SYSTEM IS 8.30 MILES

LOCAL ROAD SYSTEM IS 23.67 MILES



SCALE 0 1/2 1 MILE
ONE INCH EQUALS 3000 FEET

PRIMARY
CR - 437 (THUNDER LAKE ROAD) - 2.0 MILES
CR - 442 (OLD US-2) - 6.30 MILES

LOCAL
10. FIRE TOWER ROAD - 1.00 MILES
11. FOX ROAD - 0.60 MILES
12. WOLFE ROAD - 1.00 MILES
13. TANQUAY ROAD - 1.00 MILES
14. PETERSON ROAD - 2.10 MILES
15. COUNTY LINE ROAD - 1.48 MILES
16. POUPOUR ROAD - 1.00 MILES
17. ADVENT ROAD - 1.00 MILES
18. HASS ROAD - 1.00 MILES
19. COOKS SCHOOL SOUTH ROAD - 2.00 MILES
20. SPIELMACHER ROAD - 1.00 MILES
21. DAVIDSON ROAD - 2.00 MILES
22. SEGERSTROM ROAD - 0.60 MILES
23. CEMETERY ROAD - 1.50 MILES
24. DEPOT ROAD - 0.46 MILES
25. OLD US-2 - 1.13 MILES
27. CARLSON ROAD - 4.00 MILES
28. FLODIN ROAD - 0.80 MILES

NUMBER OF ROAD
LENGTH IN MILES - TO THE NEAREST 1/100

NOTE: SEE MAP 28 FOR ENLARGED VIEW OF
COOKS.

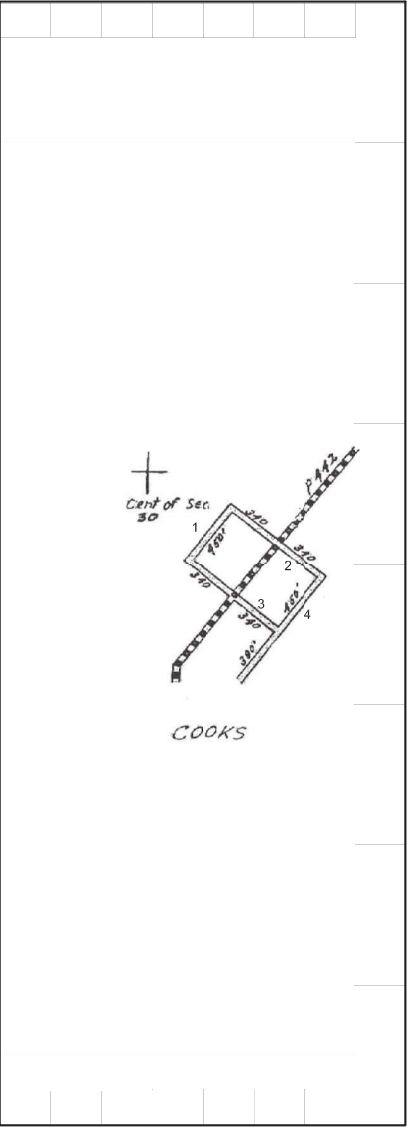
SEE MAP 19

Certification Map
of

TOWNSHIP INWOOD
SECTION T. 41N R. 17W
COUNTY SCHOOLCRAFT - 75

Schoolcraft County Road Commission
Certified December 31, 2024

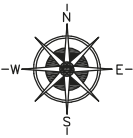
Prepared By: Ian Stampfl, PE - County Highway Engineer
Schoolcraft County Road Commission



LEGEND

- COUNTY LINE
- CORPORATE LIMITS
- STATE TRUNKLINE
- COUNTY PRIMARY
- COUNTY LOCAL
- ADJACENT COUNTY
- CITY OR VILLAGE STREET

PRIMARY ROAD SYSTEM IS 0.00 MILES
LOCAL ROAD SYSTEM IS 0.50 MILES



SCALE 0 600 1200 FEET
ONE INCH EQUALS 600 FEET

- LOCAL
- 1. MAPLE STREET - 1130 FEET
 - 2. MARKDALE AVENUE - 340 FEET
 - 3. FOREST STREET - 340 FEET
 - 4. MILL STREET - 830 FEET

NUMBER OF ROAD
LENGTH IN MILES - TO THE NEAREST 1/100

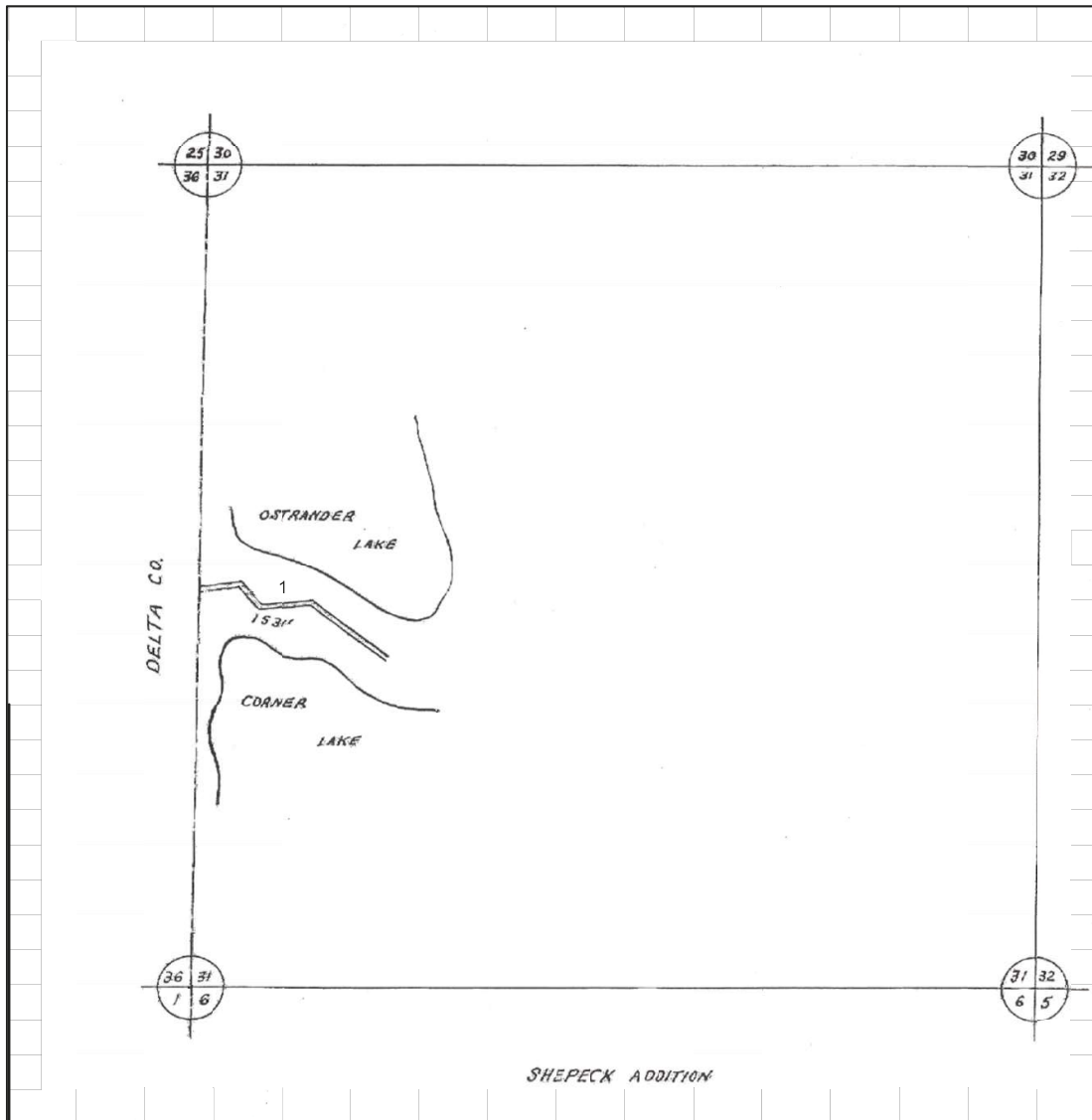
NOTE: SEE MAP 27 FOR SURROUNDING ROADS.

Certification Map
of

TOWNSHIP INWOOD
SECTION 30 T. 41N R. 17W
COUNTY SCHOOLCRAFT - 75

Schoolcraft County Road Commission
Certified December 31, 2024

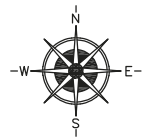
Prepared By: Ian Stampfl, PE - County Highway Engineer
Schoolcraft County Road Commission



LEGEND

- COUNTY LINE
- CORPORATE LIMITS
- STATE TRUNKLINE
- COUNTY PRIMARY
- COUNTY LOCAL
- ADJACENT COUNTY
- CITY OR VILLAGE STREET

PRIMARY ROAD SYSTEM IS 0.00 MILES
LOCAL ROAD SYSTEM IS 0.29 MILES



SCALE 0 600 1200 FEET
ONE INCH EQUALS 600 FEET

LOCAL
1. OSTRANDER LAKE ROAD - 1531 FEET

NUMBER OF ROAD
LENGTH IN MILES - TO THE NEAREST 1/100

NOTE: SEE MAP 26 FOR SURROUNDING AREA AND ROADS.

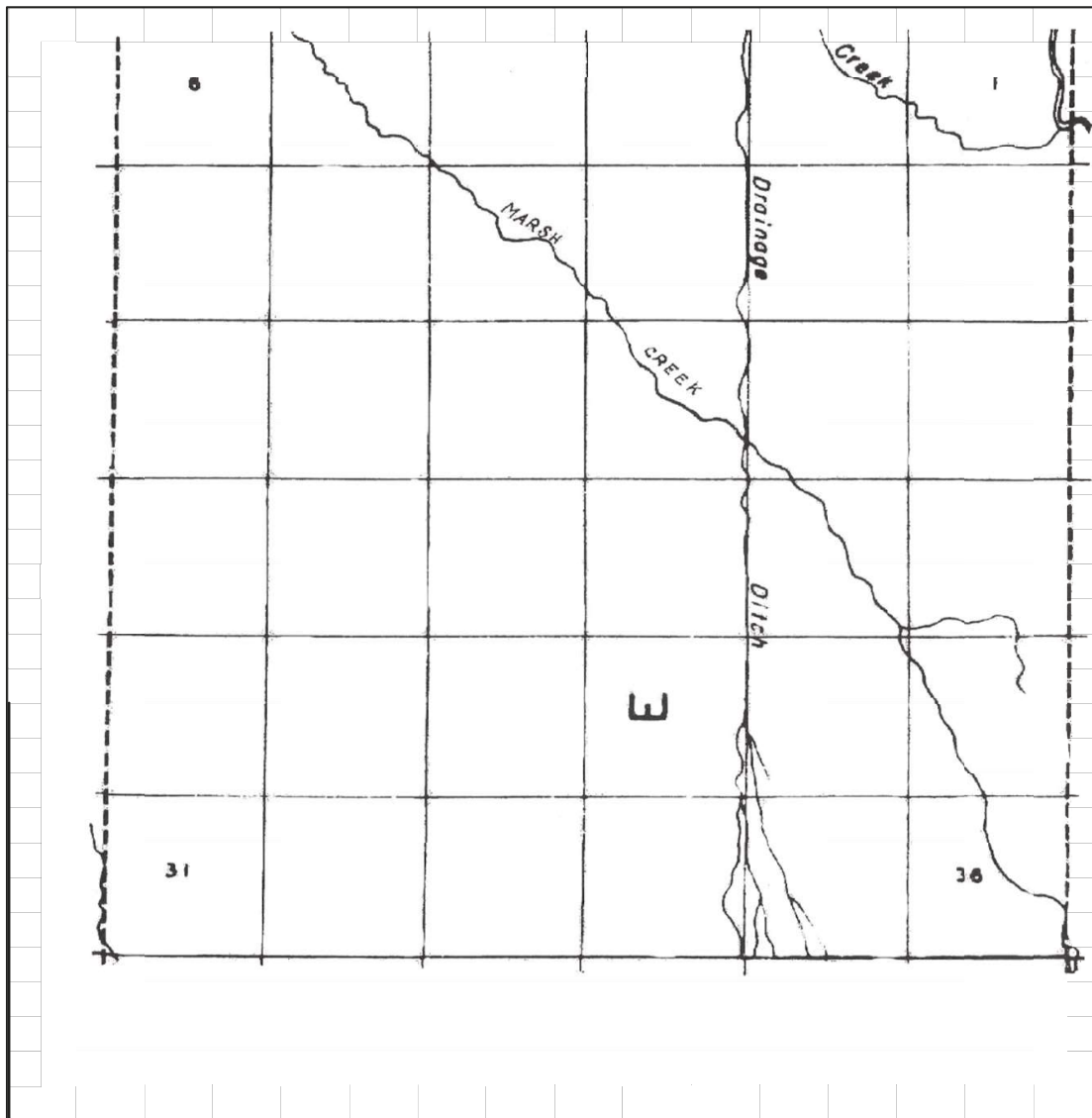
Certification Map
of

TOWNSHIP INWOOD
SECTION 31 T. 44N R. 18W
COUNTY SCHOOLCRAFT - 75

Schoolcraft County Road Commission
Certified December 31, 2024

Prepared By: Ian Stampfly, PE - County Highway Engineer
Schoolcraft County Road Commission

SEE MAP 45



SEE MAP 13

SEE MAP 1

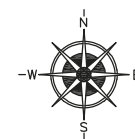
SEE MAP 31

LEGEND

COUNTY LINE	---
CORPORATE LIMITS	----
STATE TRUNKLINE	=====
COUNTY PRIMARY	=====
COUNTY LOCAL	=====
ADJACENT COUNTY	=====
CITY OR VILLAGE STREET	=====

PRIMARY ROAD SYSTEM IS 0.00 MILES

LOCAL ROAD SYSTEM IS 0.00 MILES



SCALE 0 1/2 1 MILE
ONE INCH EQUALS 3000 FEET

Certification Map
of

TOWNSHIP MANISTIQUE

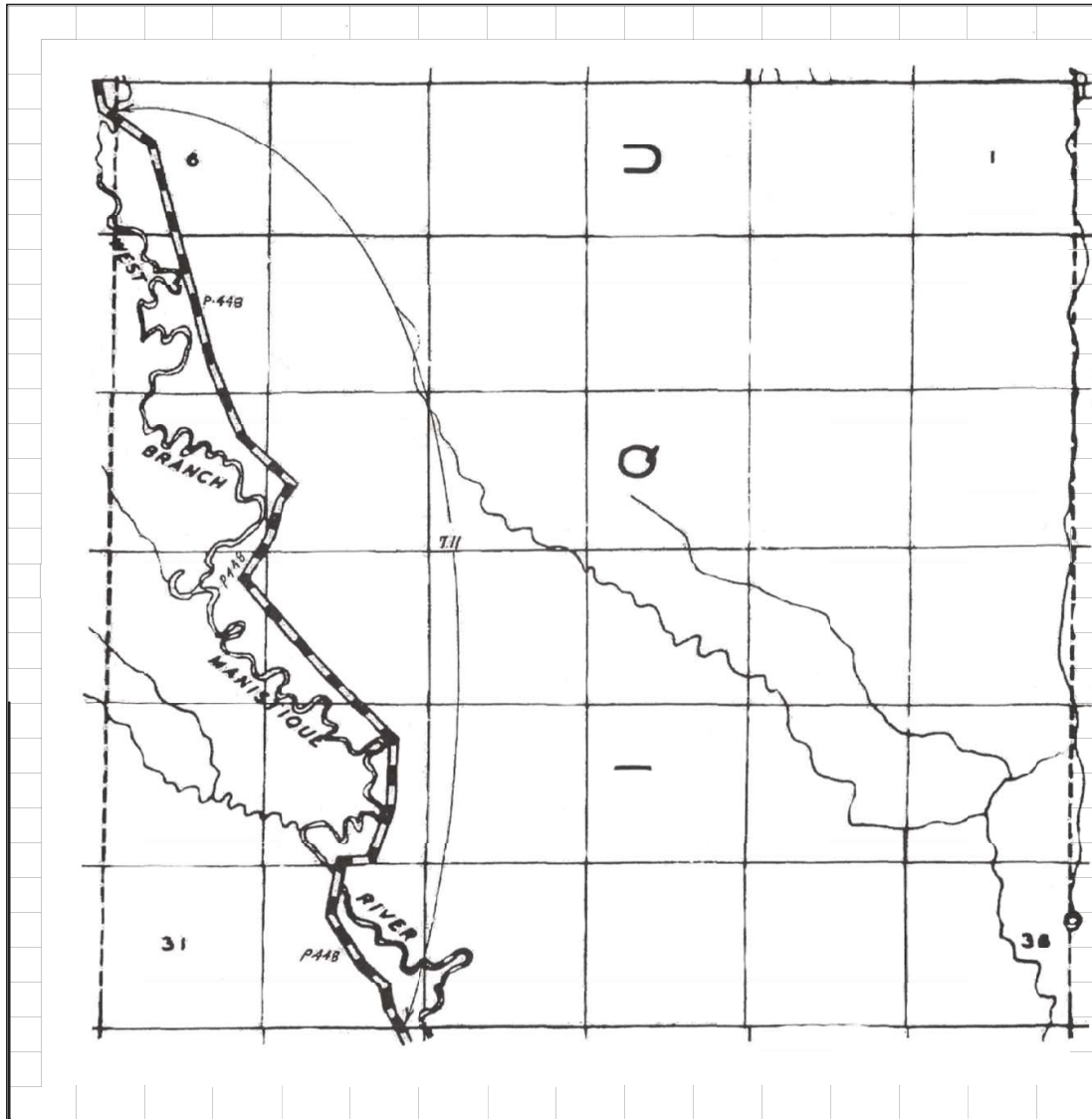
SECTION T. 45N R. 15W

COUNTY SCHOOLCRAFT - 75

Schoolcraft County Road Commission
Certified December 31, 2024

Prepared By: Ian Stampf, PE - County Highway Engineer
Schoolcraft County Road Commission

SEE MAP 30

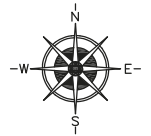


LEGEND

COUNTY LINE	----
CORPORATE LIMITS	-----
STATE TRUNKLINE	=====
COUNTY PRIMARY	=====
COUNTY LOCAL	=====
ADJACENT COUNTY	=====
CITY OR VILLAGE STREET	=====

PRIMARY ROAD SYSTEM IS 7.11 MILES

LOCAL ROAD SYSTEM IS 0.00 MILES



SCALE 0 1/2 1 MILE
ONE INCH EQUALS 3000 FEET

PRIMARY
CR - 448 (SOUTH CREIGHTON ROAD) - 7.11 MILES

LOCAL
NUMBER OF ROAD
LENGTH IN MILES - TO THE NEAREST 1/100

Certification Map
of

TOWNSHIP MANISTIQUE

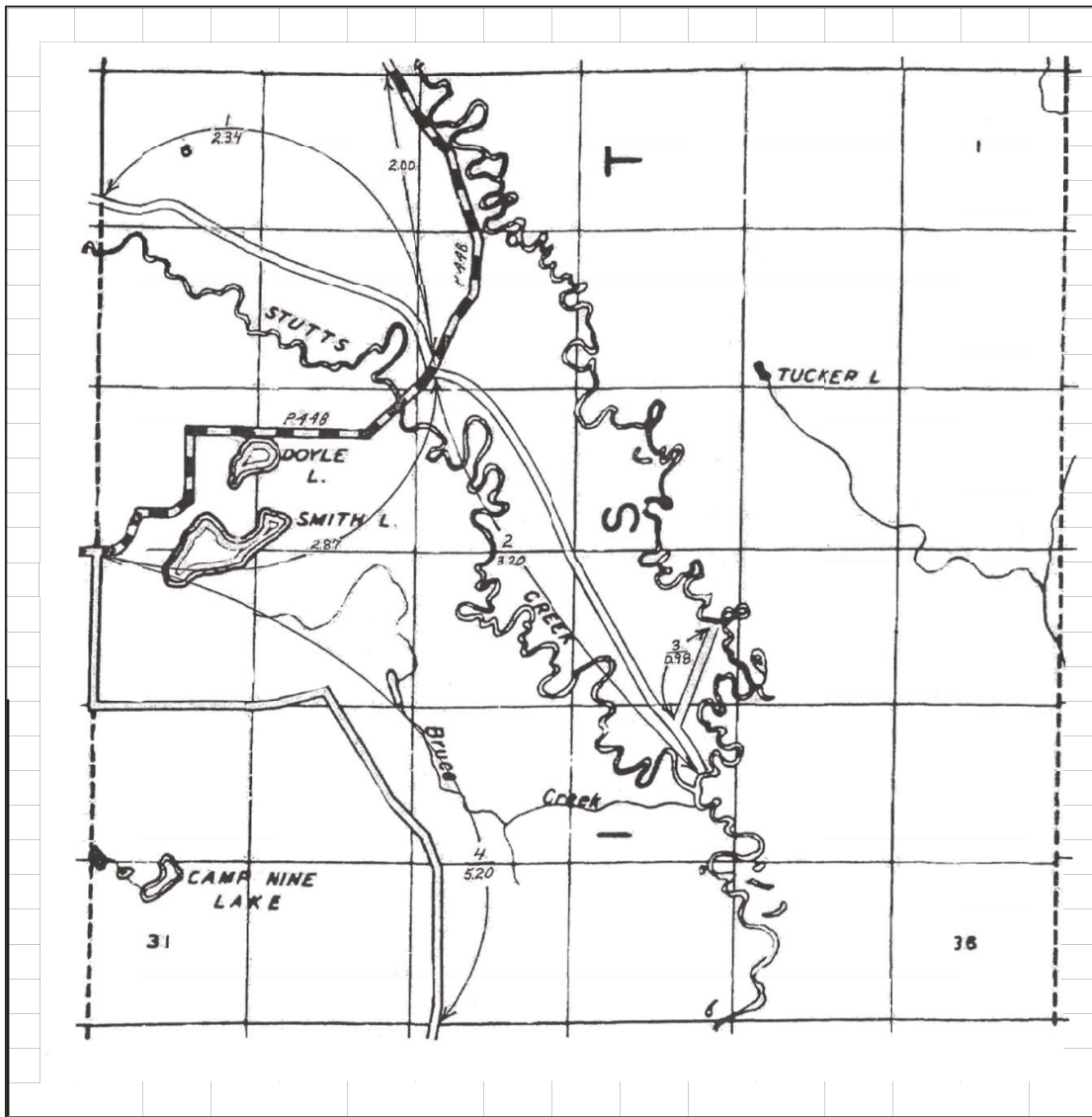
SECTION _____ T. 44N R. 15W

COUNTY SCHOOLCRAFT - 75

Schoolcraft County Road Commission
Certified December 31, 2024

Prepared By: Ian Stampfl, PE - County Highway Engineer
Schoolcraft County Road Commission

SEE MAP 31



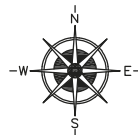
SEE MAP 33

LEGEND

COUNTY LINE	---
CORPORATE LIMITS	---
STATE TRUNKLINE	---
COUNTY PRIMARY	=====
COUNTY LOCAL	=====
ADJACENT COUNTY	=====
CITY OR VILLAGE STREET	=====

PRIMARY ROAD SYSTEM IS 4.87 MILES

LOCAL ROAD SYSTEM IS 11.72 MILES



SCALE 0 1/2 1 MILE
ONE INCH EQUALS 3000 FEET

PRIMARY

CR - 448 (SOUTH CREIGHTON ROAD) - 2.00 MILES
CR - 448 (SMITH LAKE ROAD) - 2.87 MILES

LOCAL

1. SOUTHSIDE ROAD - 2.34 MILES
2. SOUTH STUTTS ROAD - 3.20 MILES
3. BILLINGS ROAD - 0.98 MILES
4. HIGHROLLWAYS - 5.20 MILES

NUMBER OF ROAD

LENGTH IN MILES - TO THE NEAREST 1/100

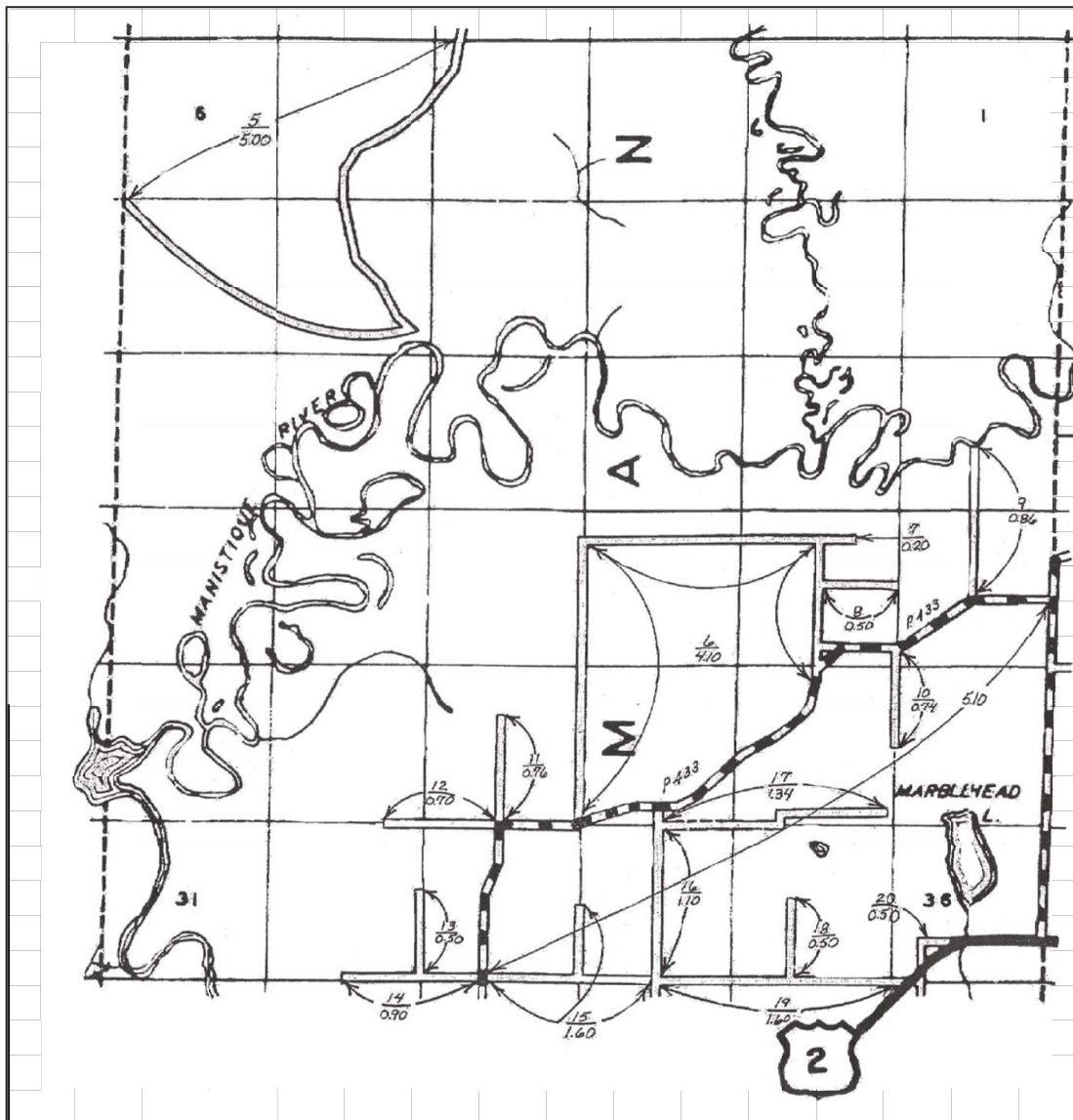
Certification Map
of

TOWNSHIP MANISTIQUE
SECTION T. 43N R. 15W
COUNTY SCHOOLCRAFT - 75

Schoolcraft County Road Commission
Certified December 31, 2024

Prepared By: Ian Stampfly, PE - County Highway Engineer
Schoolcraft County Road Commission

SEE MAP 32



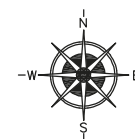
SEE MAP 34

LEGEND

COUNTY LINE	---
CORPORATE LIMITS	---
STATE TRUNKLINE	---
COUNTY PRIMARY	---
COUNTY LOCAL	---
ADJACENT COUNTY	---
CITY OR VILLAGE STREET	---

PRIMARY ROAD SYSTEM IS 5.10 MILES

LOCAL ROAD SYSTEM IS 20.90 MILES



SCALE 0 1/2 1 MILE
ONE INCH EQUALS 3000 FEET

PRIMARY

CR - 433 (RIVER ROAD) - 5.10 MILES

LOCAL

- 5. HIGHROLLWAYS ROAD - 5.00 MILES
- 6. KENDALL ROAD - 4.10 MILES
- 7. ARROWOOD ROAD - 0.20 MILES
- 8. COUNTY PIT ROAD - 0.50 MILES
- 9. MERWIN CREEK ROAD - 0.86 MILES
- 10. SCHNURER ROAD - 0.74 MILES
- 11. SCHARSTROM ROAD - 0.96 MILES
- 12. FAKETTY ROAD - 0.70 MILES
- 13. SHUNK ROAD - 0.50 MILES
- 14. KRUMMICH ROAD - 0.90 MILES
- 15. LINDEN ROAD & DIXON ROAD - 1.60 MILES
- 16. MURPHY ROAD - 1.10 MILES
- 17. BELGIUM ROAD - 1.34 MILES
- 18. GREGRASH ROAD - 0.50 MILES
- 19. LASICH ROAD - 1.60 MILES
- 20. GARDAPEE ROAD (OLD US-2) - 0.50 MILES

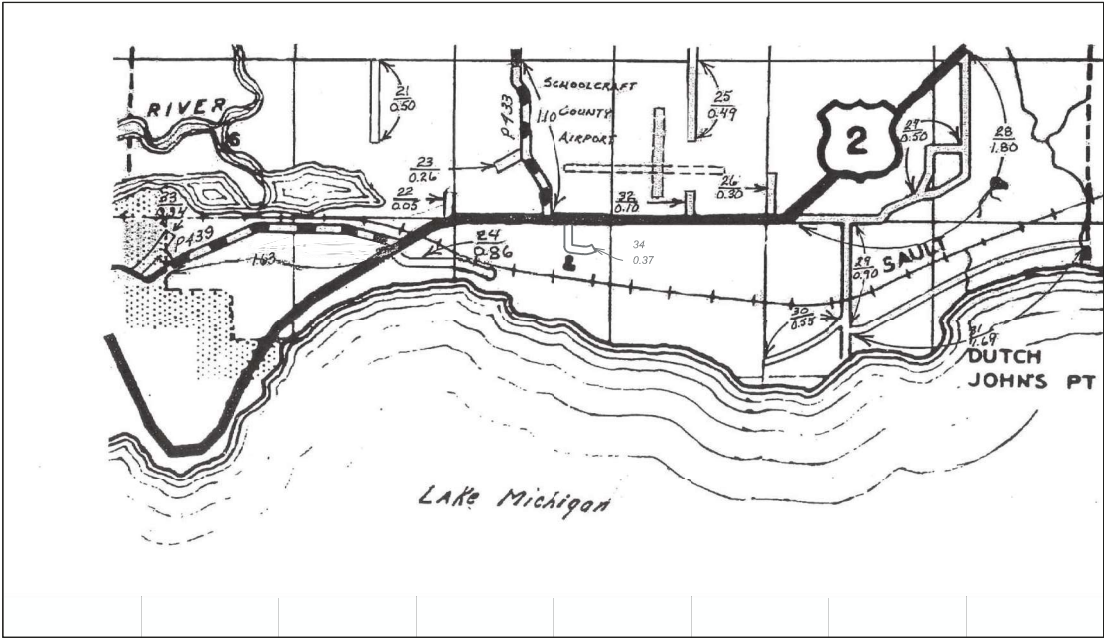
NUMBER OF ROAD

LENGTH IN MILES - TO THE NEAREST 1/100

NOTE: SEE MAP 36 FOR ENLARGED NATIVE AMERICAN RESERVATION ROADS.

Certification Map
ofTOWNSHIP MANISTIQUESECTION T. 42N R. 15WCOUNTY SCHOOLCRAFT - 75Schoolcraft County Road Commission
Certified December 31, 2024Prepared By: Ian Stampfly, PE - County Highway Engineer
Schoolcraft County Road Commission

SEE MAP 33



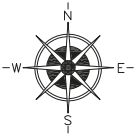
SEE MAP 19

SEE MAP 5

LEGEND

- COUNTY LINE
- CORPORATE LIMITS
- STATE TRUNKLINE
- COUNTY PRIMARY
- COUNTY LOCAL
- ADJACENT COUNTY
- CITY OR VILLAGE
- STREET

PRIMARY ROAD SYSTEM IS 2.73 MILES
LOCAL ROAD SYSTEM IS 8.71 MILES



SCALE 0 1/2 1 MILE
ONE INCH EQUALS 3000 FEET

PRIMARY
CR - 433 (RIVER ROAD) - 1.10 MILES
CR - 439 (TANNERY ROAD) - 1.63 MILES

LOCAL
21. N. KRUMMICH ROAD - 0.50 MILES
22. WALTERS ROAD - 0.05 MILES
23. ORR ROAD - 0.26 MILES
24. GLENWOOD DRIVE - 0.86 MILES
25. MURPHY ROAD - 0.49 MILES
26. HUBBLE ROAD - 0.30 MILES
27. WILLY MAC ROAD - 0.50 MILES
28. DUCK INN ROAD - 1.80 MILES
29. MICHIBAY DRIVE - 0.90 MILES
30. JUNIPER TRAIL - 0.55 MILES
31. MICHIBAY ROAD - 1.69 MILES
32. KLAGSTAD ROAD - 0.10 MILES
33. EAST ROAD - 0.34 MILES
34. DILLEKIE LANE - 0.37 MILES

NUMBER OF ROAD
LENGTH IN MILES - TO THE NEAREST 1/100

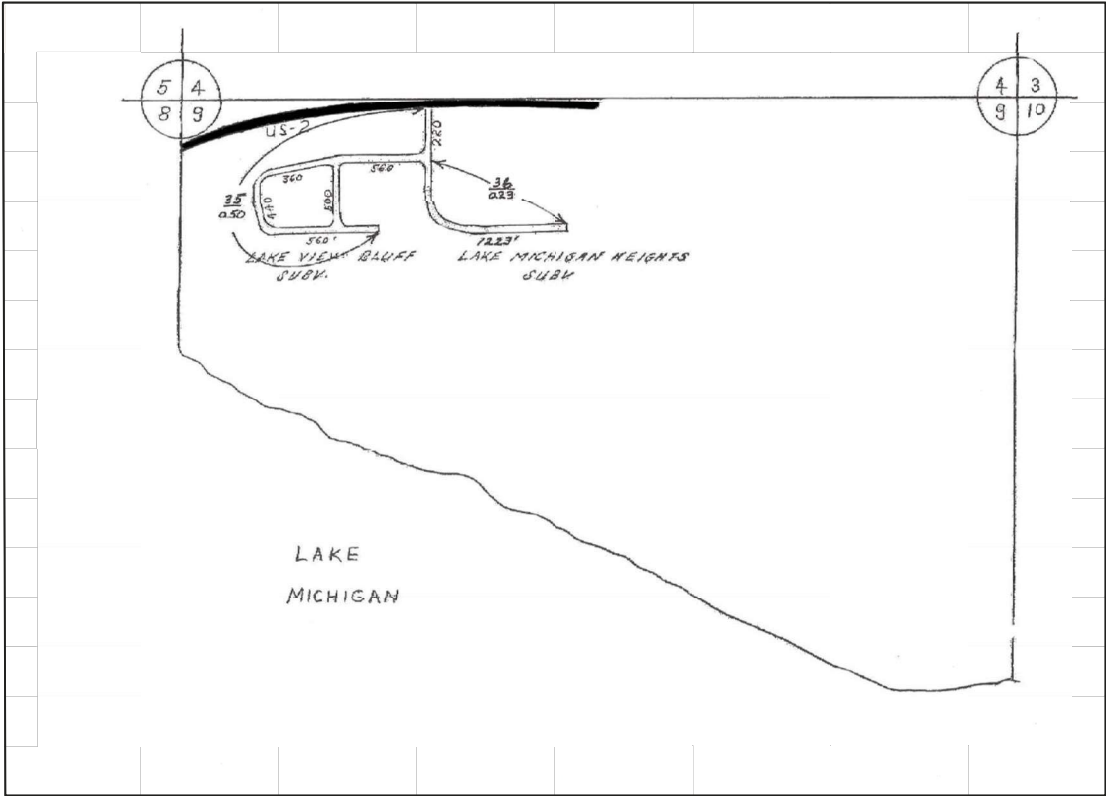
NOTE: SEE MAP 35 FOR ENLARGED VIEW OF
HILLCREST AREA.

Certification Map
of

TOWNSHIP MANISTIQUE
SECTION T. 41N R. 15W
COUNTY SCHOOLCRAFT - 75

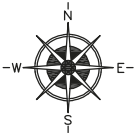
Schoolcraft County Road Commission
Certified December 31, 2024

Prepared By: Ian Stampfly, PE - County Highway Engineer
Schoolcraft County Road Commission



- LEGEND
- COUNTY LINE
 - CORPORATE LIMITS
 - STATE TRUNKLINE
 - COUNTY PRIMARY
 - COUNTY LOCAL
 - ADJACENT COUNTY
 - CITY OR VILLAGE STREET

PRIMARY ROAD SYSTEM IS 0.00 MILES
LOCAL ROAD SYSTEM IS 0.73 MILES



SCALE 0 600 1200 FEET
ONE INCH EQUALS 600 FEET

LOCAL
35. HILLCREST DR & BLUFF STREET - 0.50 MILES
36. BOLITHO DRIVE - 0.23 MILES

NUMBER OF ROAD
LENGTH IN MILES - TO THE NEAREST 1/100

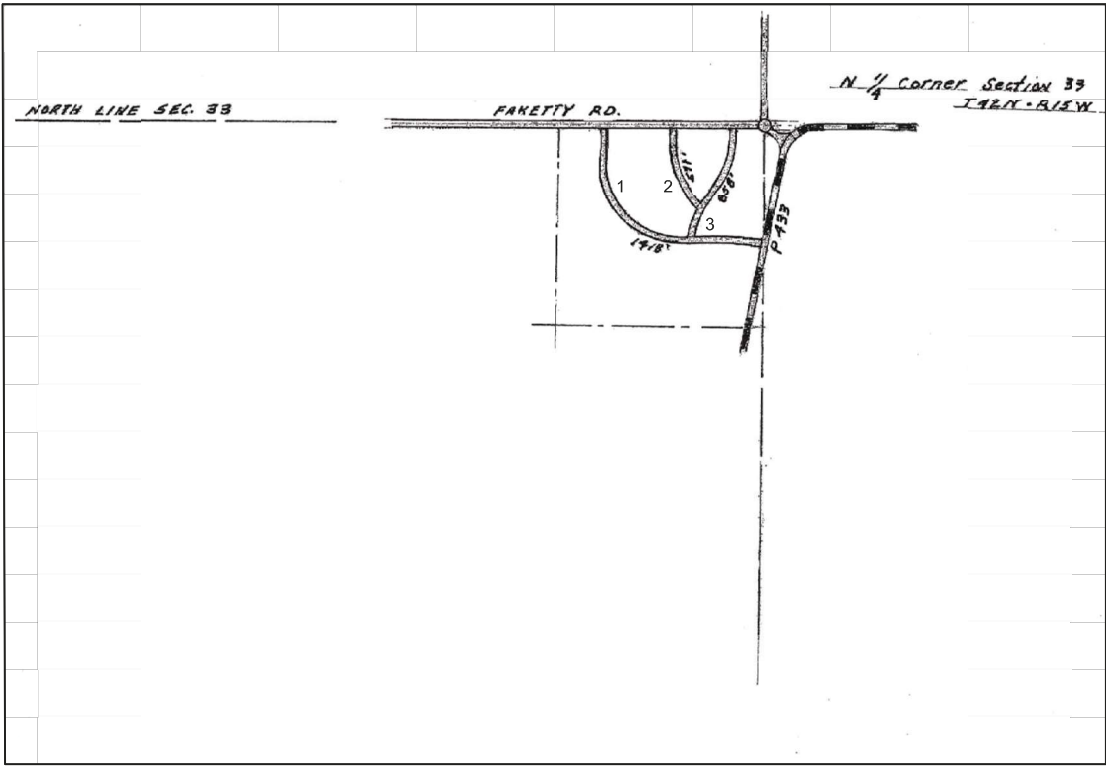
NOTE: SEE MAP 34 FOR SURROUNDING
ROADS.

Certification Map
of

TOWNSHIP MANISTIQUE
SECTION 9 T. 41N R. 15W
COUNTY SCHOOLCRAFT - 75

Schoolcraft County Road Commission
Certified December 31, 2024

Prepared By: Ian Stampfly, PE - County Highway Engineer
Schoolcraft County Road Commission



LOCAL
1. MUKWA DRIVE - 1418 FEET
2. CHITOMA DRIVE - 571 FEET
3. ZHIGAG DRIVE - 858 FEET

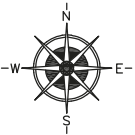
NUMBER OF ROAD
LENGTH IN MILES - TO THE NEAREST 1/100

NOTE: SEE MAP 33 FOR SURROUNDING
ROADS.

LEGEND

COUNTY LINE
CORPORATE LIMITS
STATE TRUNKLINE
COUNTY PRIMARY
COUNTY LOCAL
ADJACENT COUNTY
CITY OR VILLAGE
STREET

PRIMARY ROAD SYSTEM IS 0.00 MILES
LOCAL ROAD SYSTEM IS 0.54 MILES



SCALE 0 600 1200 FEET
ONE INCH EQUALS 600 FEET

Certification Map
of

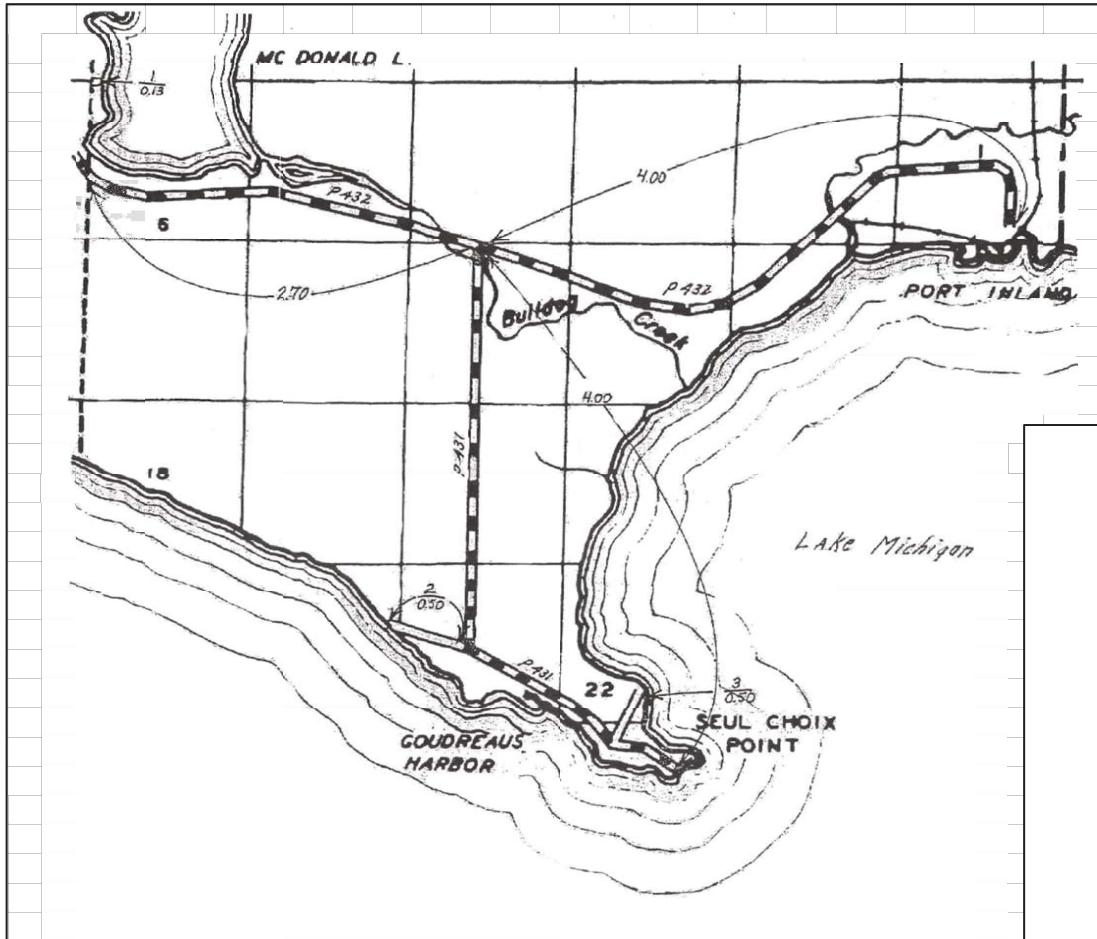
TOWNSHIP MANISTIQUE
SECTION 33 T. 42N R. 15W
COUNTY SCHOOLCRAFT - 75

Schoolcraft County Road Commission
Certified December 31, 2024

Prepared By: Ian Stampfl, PE - County Highway Engineer
Schoolcraft County Road Commission

SEE MAP 38

SEE MAP 5



MACKINAC COUNTY

PRIMARY
CR - 431 (SEUL CHOIX ROAD) - 4.0 MILES
CR - 432 (PORT INLAND ROAD) - 6.70 MILES

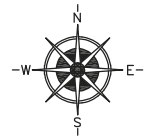
LOCAL
1. MACDONALD LAKE ROAD - 0.13 MILES
2. HARVEY GOUDREAU ROAD - 0.50 MILES
3. JOHN GOUDREAU ROAD - 0.50 MILES

NUMBER OF ROAD
LENGTH IN MILES - TO THE NEAREST 1/100

LEGEND

COUNTY LINE
CORPORATE LIMITS
STATE TRUNKLINE
COUNTY PRIMARY
COUNTY LOCAL
ADJACENT COUNTY
CITY OR VILLAGE
STREET

PRIMARY ROAD SYSTEM IS 10.70 MILES
LOCAL ROAD SYSTEM IS 1.13 MILES



SCALE 0 1/2 1 MILE
ONE INCH EQUALS 3000 FEET

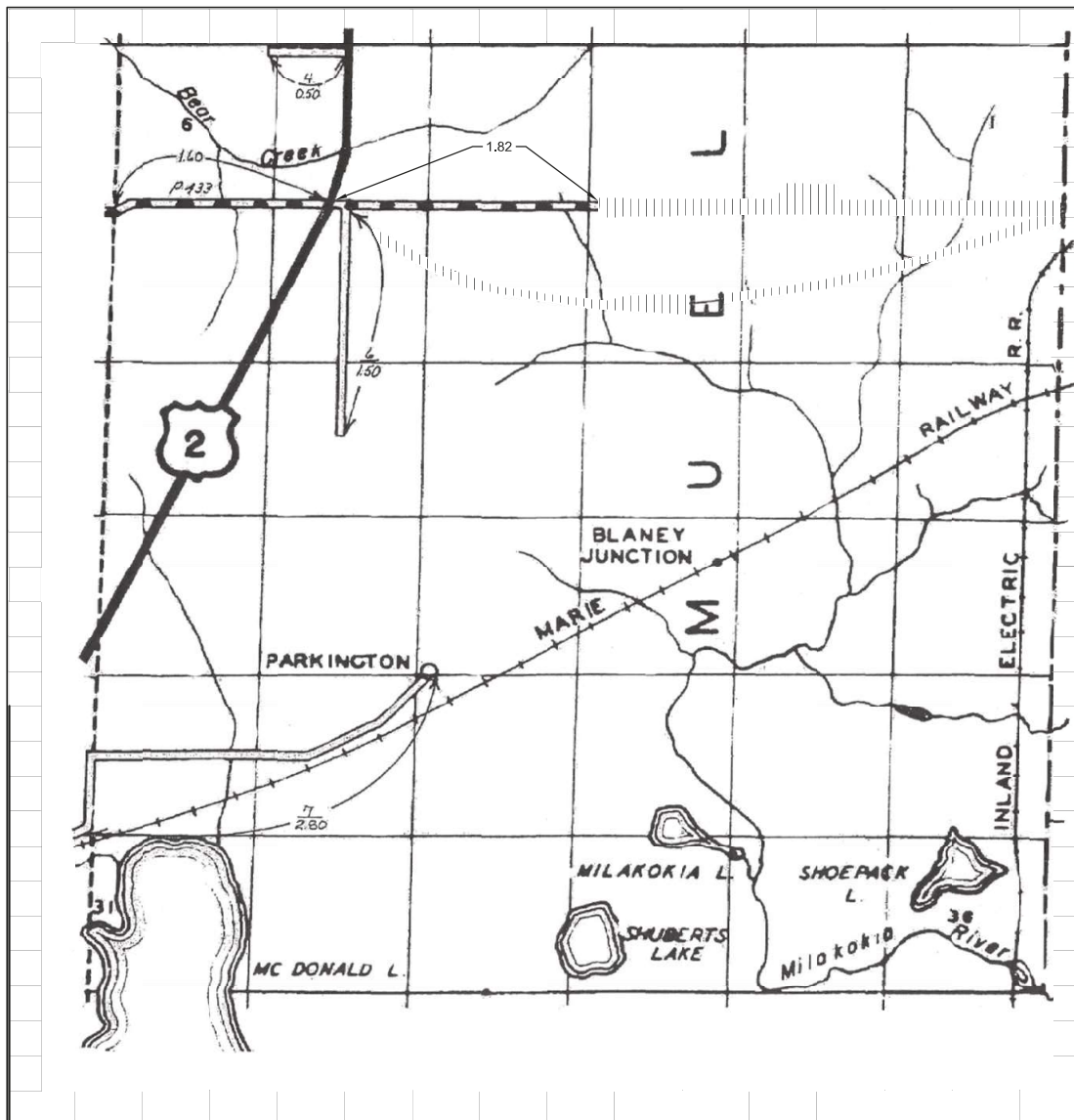
Certification Map
of

TOWNSHIP MUELLER
SECTION T. 41N R. 13W
COUNTY SCHOOLCRAFT - 75

Schoolcraft County Road Commission
Certified December 31, 2024

Prepared By: Ian Stampf, PE - County Highway Engineer
Schoolcraft County Road Commission

SEE MAP 39



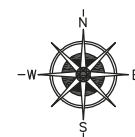
SEE MAP 37

LEGEND

COUNTY LINE	----
CORPORATE LIMITS	-----
STATE TRUNKLINE	=====
COUNTY PRIMARY	=====
COUNTY LOCAL	=====
ADJACENT COUNTY	=====
CITY OR VILLAGE STREET	=====

PRIMARY ROAD SYSTEM IS 3.42 MILES

LOCAL ROAD SYSTEM IS 4.80 MILES



SCALE 0 1/2 1 MILE
ONE INCH EQUALS 3000 FEET

PRIMARY
CR - 433 (QUARRY ROAD) - 3.42 MILES

LOCAL
4. BARKER ROAD - 0.50 MILES
6. VANATTA ROAD - 1.50 MILES
7. PARKINGTON ROAD - 2.80 MILES

NUMBER OF ROAD
LENGTH IN MILES - TO THE NEAREST 1/100

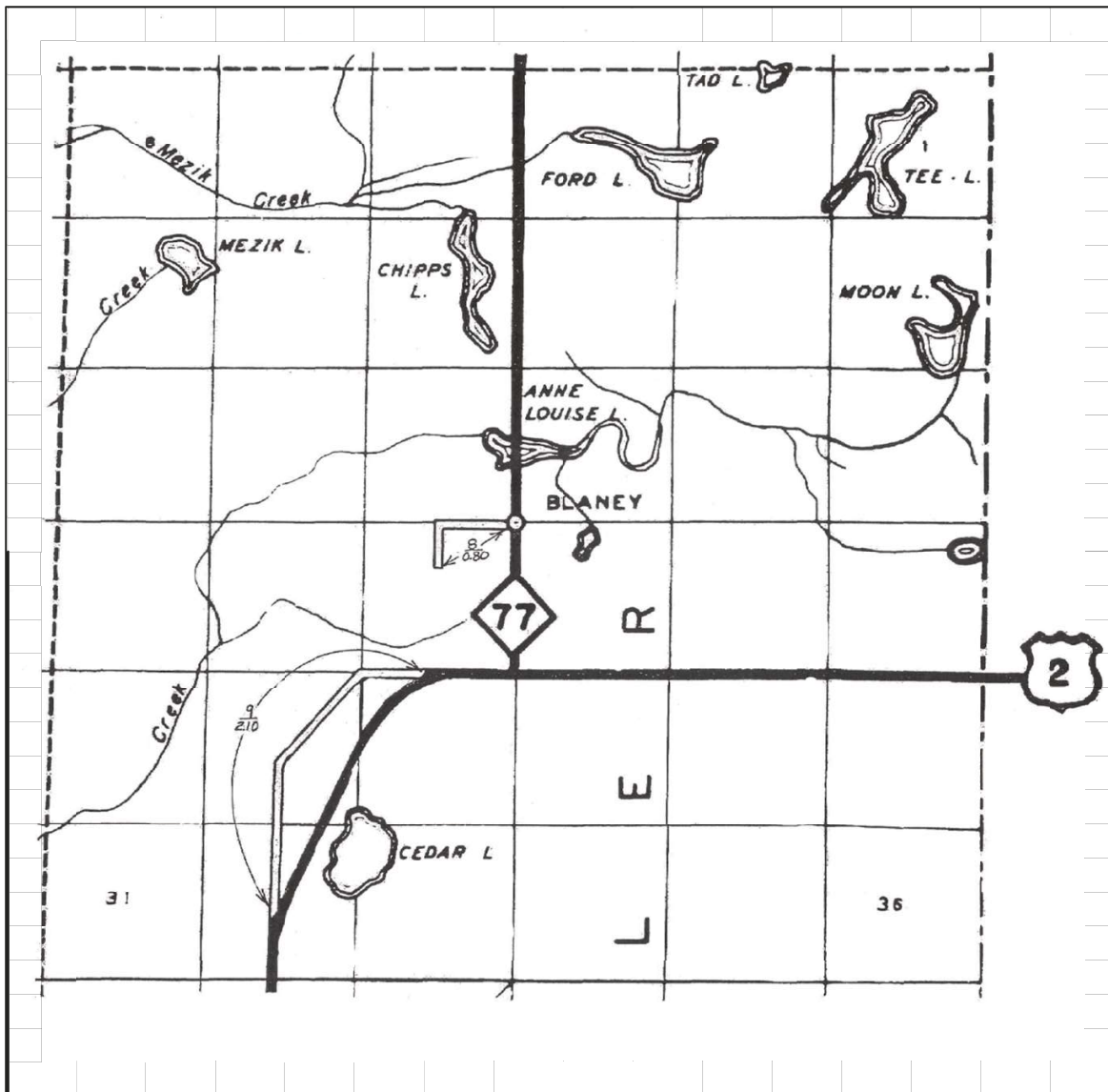
Certification Map
of

TOWNSHIP MUELLER
SECTION T. 42N R. 13W
COUNTY SCHOOLCRAFT - 75

Schoolcraft County Road Commission
Certified December 31, 2024

Prepared By: Ian Stampf, PE - County Highway Engineer
Schoolcraft County Road Commission

SEE MAP 8

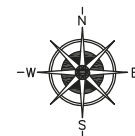


SEE MAP 38

LEGEND

COUNTY LINE
CORPORATE LIMITS
STATE TRUNKLINE
COUNTY PRIMARY
COUNTY LOCAL
ADJACENT COUNTY
CITY OR VILLAGE
STREET

PRIMARY ROAD SYSTEM IS 0.00 MILES
LOCAL ROAD SYSTEM IS 2.90 MILES



SCALE 0 1/2 1 MILE
ONE INCH EQUALS 3000 FEET

LOCAL
8. LAPORTE ROAD - 0.80 MILES
9. LANG ROAD - 2.10 MILES

NUMBER OF ROAD
LENGTH IN MILES - TO THE NEAREST 1/100

MACKINAC COUNTY

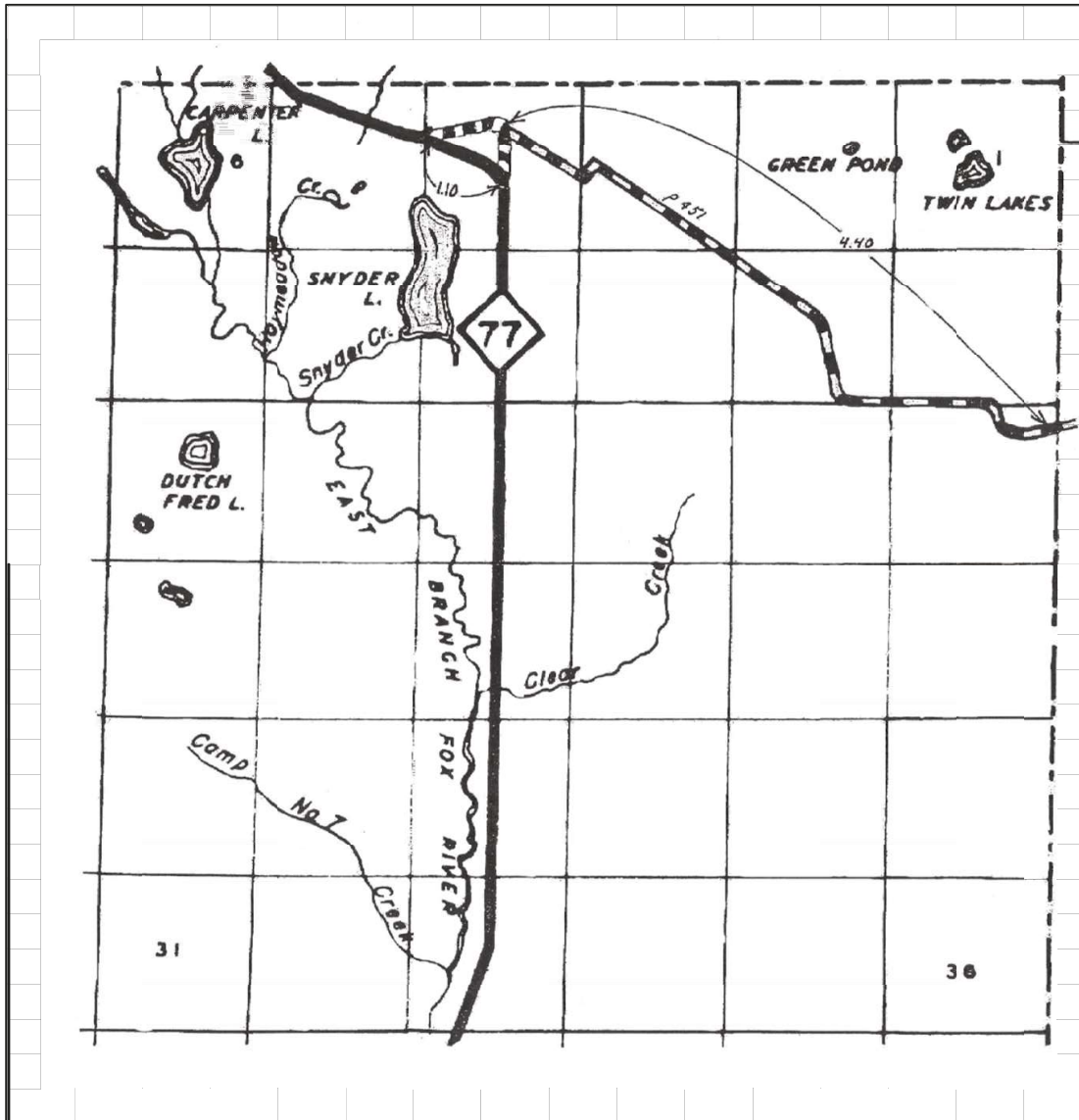
Certification Map
of

TOWNSHIP MUELLER
SECTION T. 43N R. 13W
COUNTY SCHOOLCRAFT - 75

Schoolcraft County Road Commission
Certified December 31, 2024

Prepared By: Ian Stampf, PE - County Highway Engineer
Schoolcraft County Road Commission

ALGER COUNTY



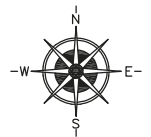
SEE MAP 41

LEGEND

COUNTY LINE	-----
CORPORATE LIMITS	-----
STATE TRUNKLINE	=====
COUNTY PRIMARY	=====
COUNTY LOCAL	=====
ADJACENT COUNTY	=====
CITY OR VILLAGE STREET	=====

PRIMARY ROAD SYSTEM IS 5.50 MILES

LOCAL ROAD SYSTEM IS 0.00 MILES



SCALE 0 1/2 1 MILE
ONE INCH EQUALS 3000 FEET

PRIMARY
CR - 451 (LAVENDER ROAD) - 5.50 MILES

NUMBER OF ROAD
LENGTH IN MILES - TO THE NEAREST 1/100

Certification Map
of

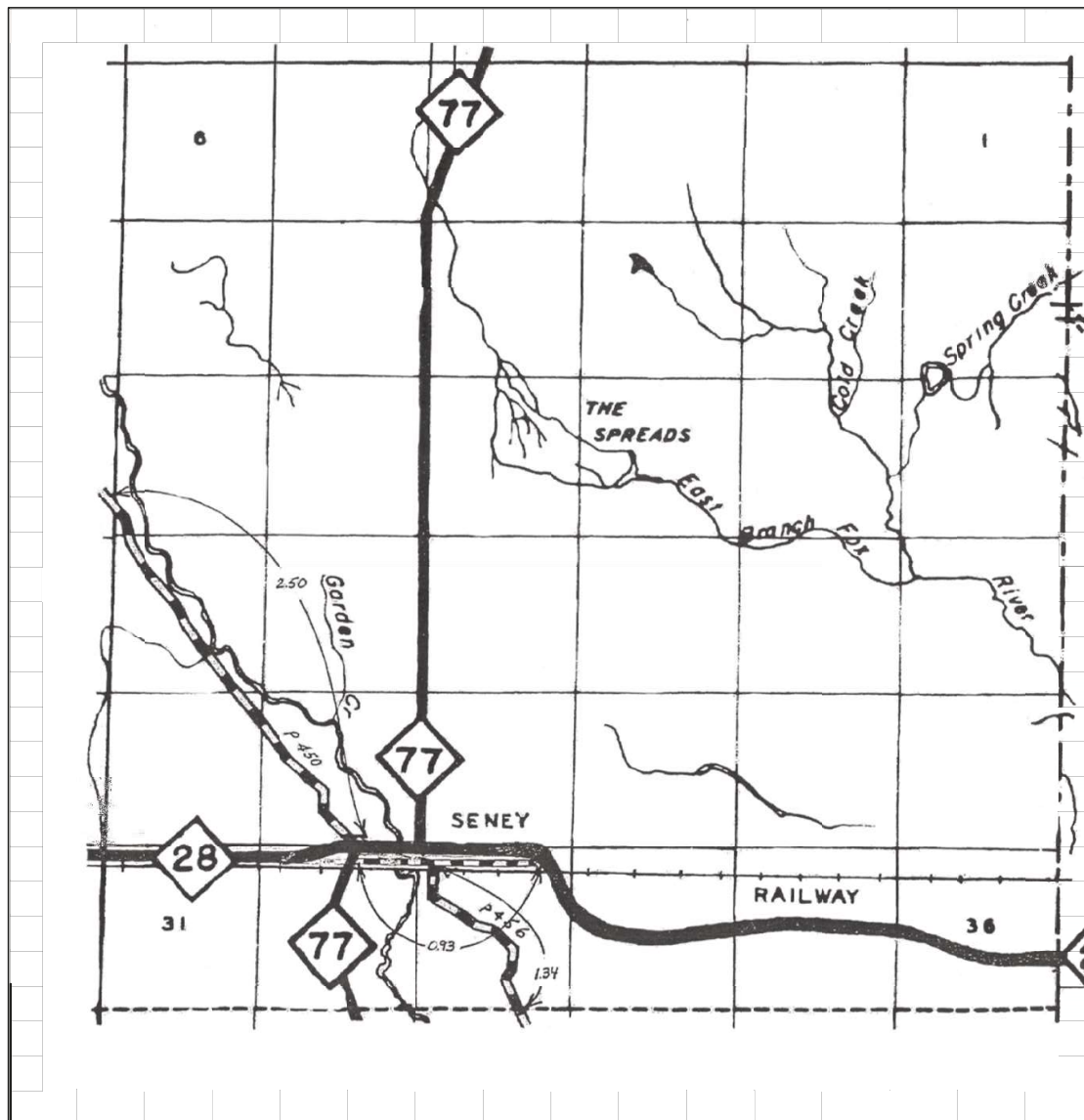
TOWNSHIP SENEY

SECTION T. 47N R. 13W

COUNTY SCHOOLCRAFT - 75

Schoolcraft County Road Commission
Certified December 31, 2024

Prepared By: Ian Stampfly, PE - County Highway Engineer
Schoolcraft County Road Commission

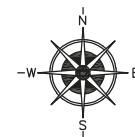


LEGEND

COUNTY LINE	----
CORPORATE LIMITS	----
STATE TRUNKLINE	=====
COUNTY PRIMARY	=====
COUNTY LOCAL	=====
ADJACENT COUNTY	=====
CITY OR VILLAGE	=====
STREET	=====

PRIMARY ROAD SYSTEM IS 4.77 MILES

LOCAL ROAD SYSTEM IS 0.00 MILES



SCALE 0 $\frac{1}{2}$ 1 MILE
ONE INCH EQUALS 3000 FEET

PRIMARY
CR - 450 (FOX RIVER ROAD) - 2.50 MILES
CR - 450 (RAILROAD STREET) - 0.93 MILES
CR - 456 (OLD SENEY ROAD) - 1.34 MILES

NUMBER OF ROAD
LENGTH IN MILES - TO THE NEAREST 1/100

NOTE: SEE MAP 46 FOR ENLARGED VIEW OF
SENEY STREETS.

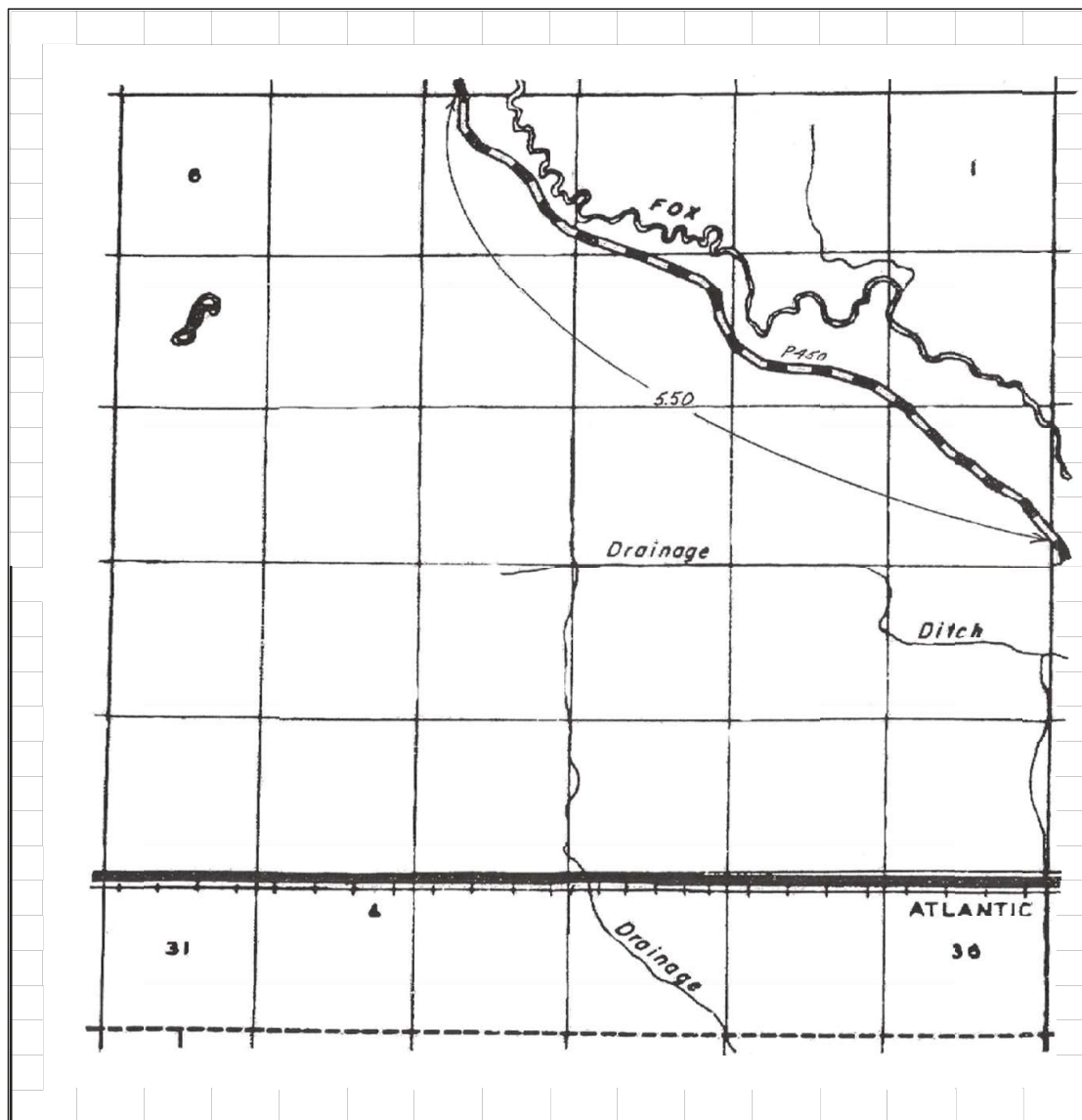
Certification Map
of

TOWNSHIP SENEY
SECTION _____ T. 46N R. 13W
COUNTY SCHOOLCRAFT - 75

Schoolcraft County Road Commission
Certified December 31, 2024

Prepared By: Ian Stampfly, PE - County Highway Engineer
Schoolcraft County Road Commission

SEE MAP 43



SEE MAP 45

SEE MAP 41

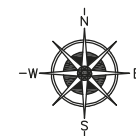
SEE MAP 1

LEGEND

COUNTY LINE	----
CORPORATE LIMITS	----
STATE TRUNKLINE	=====
COUNTY PRIMARY	=====
COUNTY LOCAL	=====
ADJACENT COUNTY	#####
CITY OR VILLAGE	=====
STREET	=====

PRIMARY ROAD SYSTEM IS 5.50 MILES

LOCAL ROAD SYSTEM IS 0.00 MILES



SCALE 0 $\frac{1}{2}$ 1 MILE
ONE INCH EQUALS 3000 FEET

PRIMARY
CR - 450 (FOX RIVER ROAD) - 5.50 MILES

NUMBER OF ROAD
LENGTH IN MILES - TO THE NEAREST 1/100

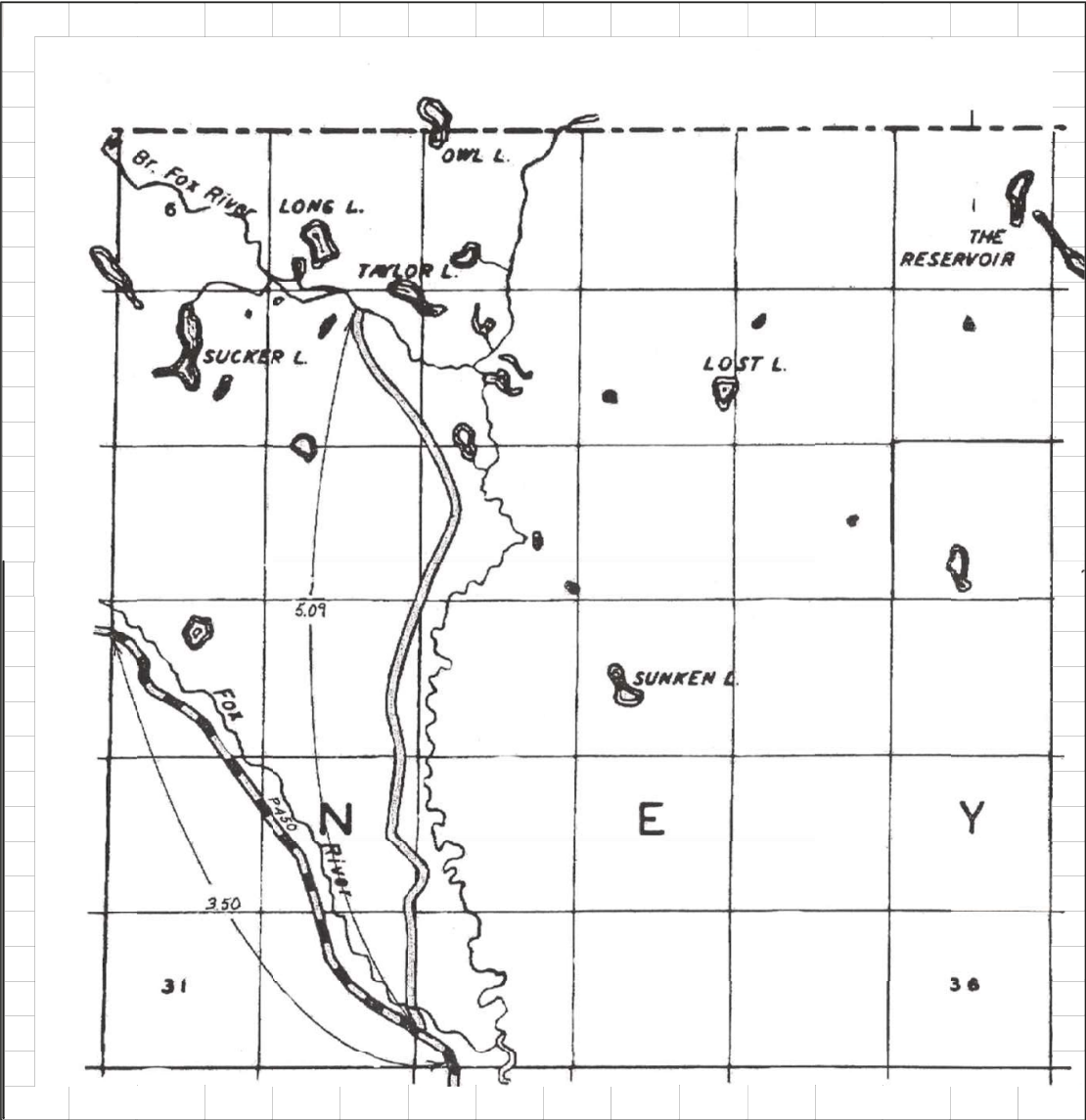
Certification Map
of

TOWNSHIP SENEY
SECTION _____ T. 46N R. 14W
COUNTY SCHOOLCRAFT - 75

Schoolcraft County Road Commission
Certified December 31, 2024

Prepared By: Ian Stampfli, PE - County Highway Engineer
Schoolcraft County Road Commission

ALGER COUNTY



SEE MAP 44

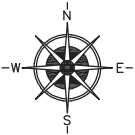
SEE MAP 42

SEE MAP 40

LEGEND

- COUNTY LINE
- CORPORATE LIMITS
- STATE TRUNKLINE
- COUNTY PRIMARY
- COUNTY LOCAL
- ADJACENT COUNTY
- CITY OR VILLAGE STREET

PRIMARY ROAD SYSTEM IS 3.50 MILES
LOCAL ROAD SYSTEM IS 5.09 MILES



SCALE 0 1/2 1 MILE
ONE INCH EQUALS 3000 FEET

PRIMARY
CR - 450 (FOX RIVER ROAD) - 3.50 MILES
LOCAL
1, WAGNER TAYLOR DAM ROAD - 5.09 MILES

NUMBER OF ROAD
LENGTH IN MILES - TO THE NEAREST 1/100

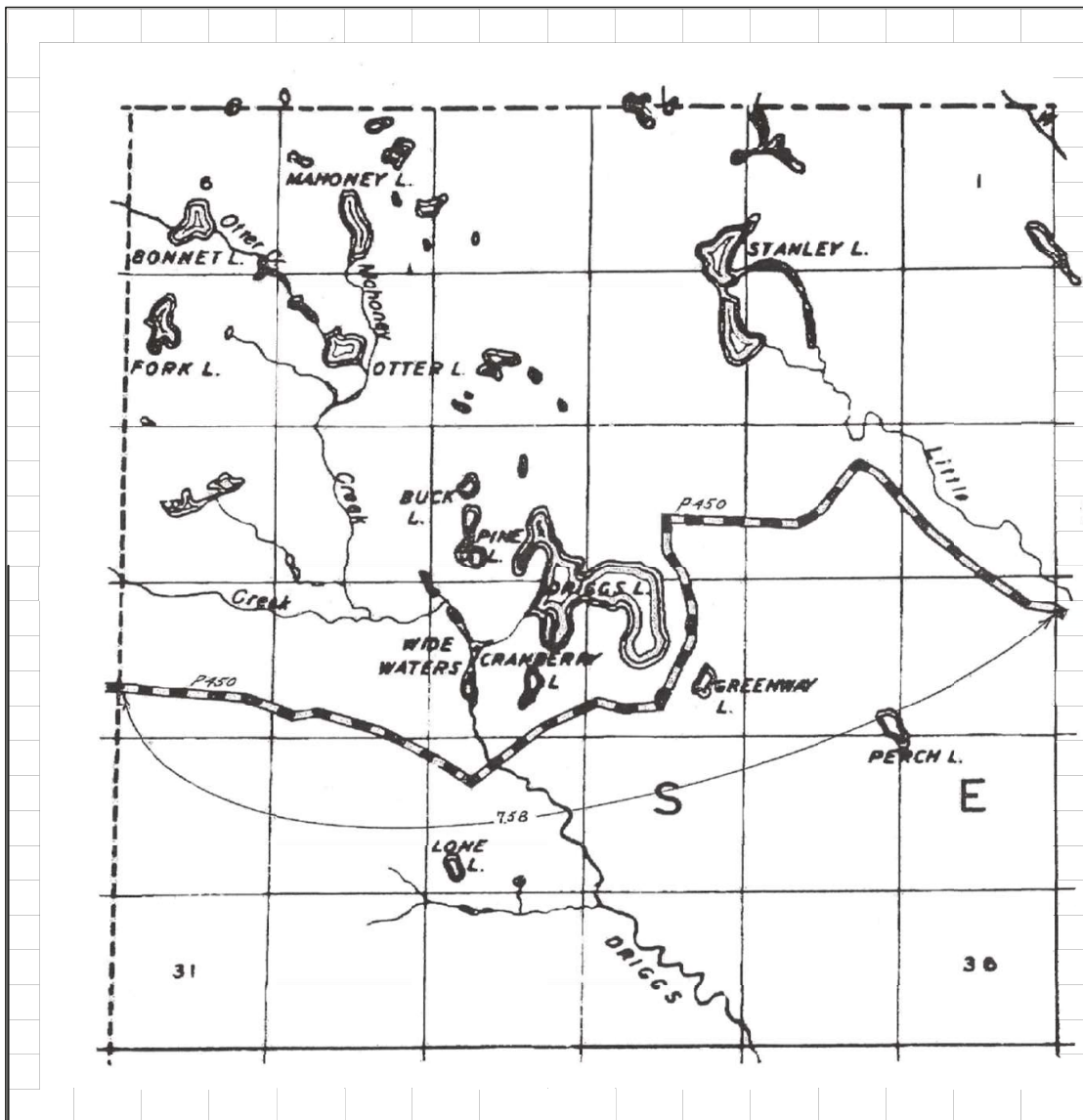
Certification Map
of

TOWNSHIP SENEY
SECTION T. 47N R. 14W
COUNTY SCHOOLCRAFT - 75

Schoolcraft County Road Commission
Certified December 31, 2024

Prepared By: Ian Stampfl, PE - County Highway Engineer
Schoolcraft County Road Commission

ALGER COUNTY

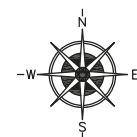


LEGEND

COUNTY LINE	-----
CORPORATE LIMITS	-----
STATE TRUNKLINE	=====
COUNTY PRIMARY	=====
COUNTY LOCAL	=====
ADJACENT COUNTY	=====
CITY OR VILLAGE STREET	=====

PRIMARY ROAD SYSTEM IS 7.58 MILES

LOCAL ROAD SYSTEM IS 0.00 MILES



SCALE 0 1/2 1 MILE
ONE INCH EQUALS 3000 FEET

PRIMARY
CR - 450 (FOX RIVER ROAD) - 7.58 MILES

NUMBER OF ROAD
LENGTH IN MILES - TO THE NEAREST 1/100

Certification Map
of

TOWNSHIP SENEY
SECTION T. 47N R. 15W
COUNTY SCHOOLCRAFT - 75

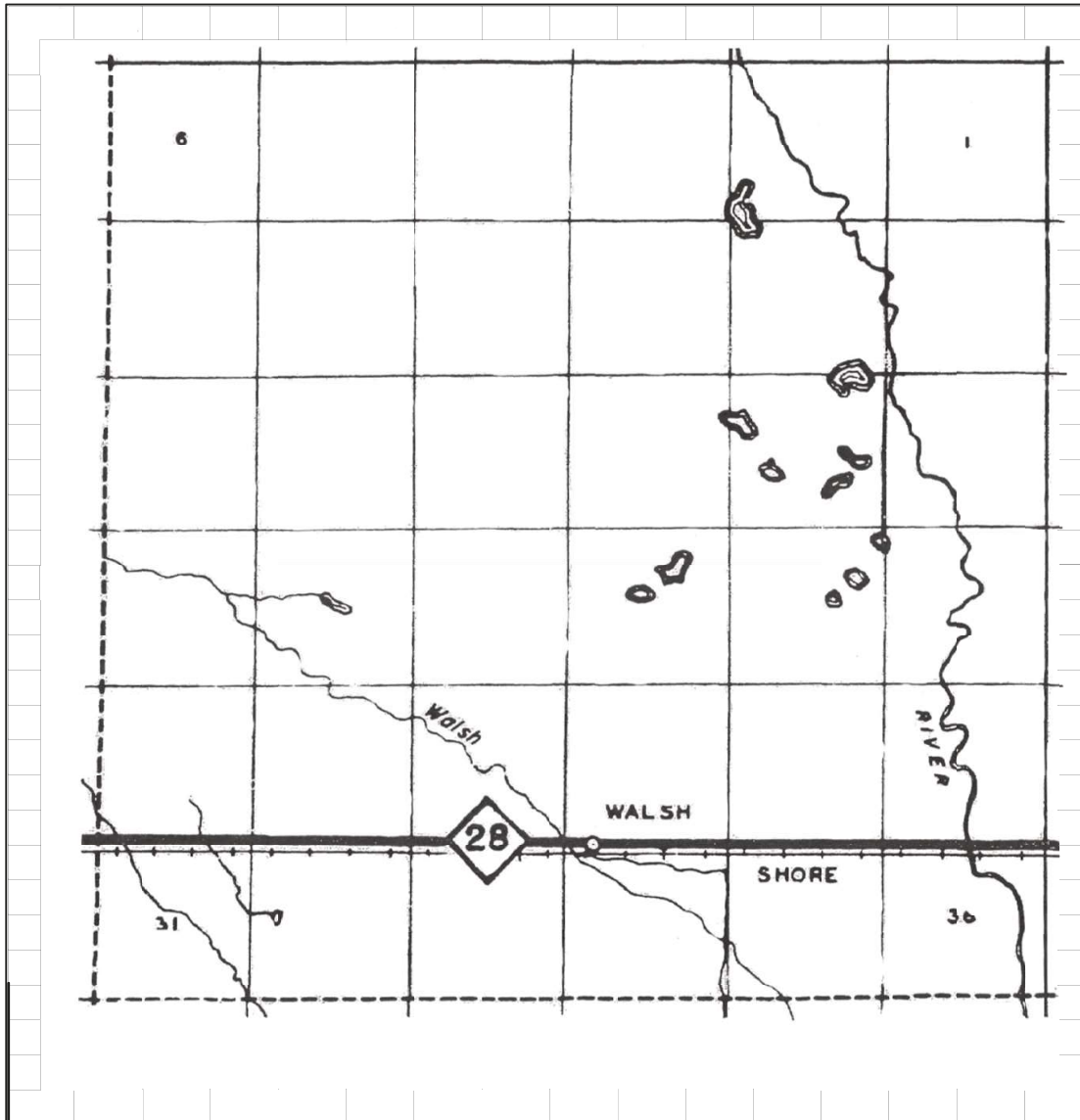
Schoolcraft County Road Commission
Certified December 31, 2024

Prepared By: Ian Stampf, PE - County Highway Engineer
Schoolcraft County Road Commission

SEE MAP 44

SEE MAP 12

SEE MAP 42



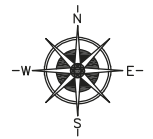
SEE MAP 30

LEGEND

COUNTY LINE	----
CORPORATE LIMITS	----
STATE TRUNKLINE	=====
COUNTY PRIMARY	=====
COUNTY LOCAL	=====
ADJACENT COUNTY	=====
CITY OR VILLAGE	=====
STREET	=====

PRIMARY ROAD SYSTEM IS 0.00 MILES

LOCAL ROAD SYSTEM IS 0.00 MILES



SCALE 0 1/2 1 MILE
ONE INCH EQUALS 3000 FEET

Certification Map
of

TOWNSHIP SENEY
SECTION T. 46N R. 15W
COUNTY SCHOOLCRAFT - 75

Schoolcraft County Road Commission
Certified December 31, 2021

Prepared By: Ian Stampfly - County Highway Engineer
Schoolcraft County Road Commission

LEGEND

COUNTY LINE	----
CORPORATE LIMITS	-----
STATE TRUNKLINE	=====
COUNTY PRIMARY	=====
COUNTY LOCAL	=====
ADJACENT COUNTY	=====
CITY OR VILLAGE STREET	=====

PRIMARY ROAD SYSTEM IS 0.00 MILES

LOCAL ROAD SYSTEM IS 1.32 MILES

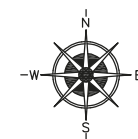
LOCAL

1. RIVER STREET & SUMMET STREET - 2485 FEET
2. CHURCH STREET - 600 FEET
3. 3RD STREET - 655 FEET
4. 2ND STREET - 405 FEET
5. 1ST STREET - 760 FEET
6. GEORGE STREET - 300 FEET
7. SENEY AVENUE - 300 FEET
8. GRAND STREET - 300 FEET
9. BRIDGE STREET - 730 FEET

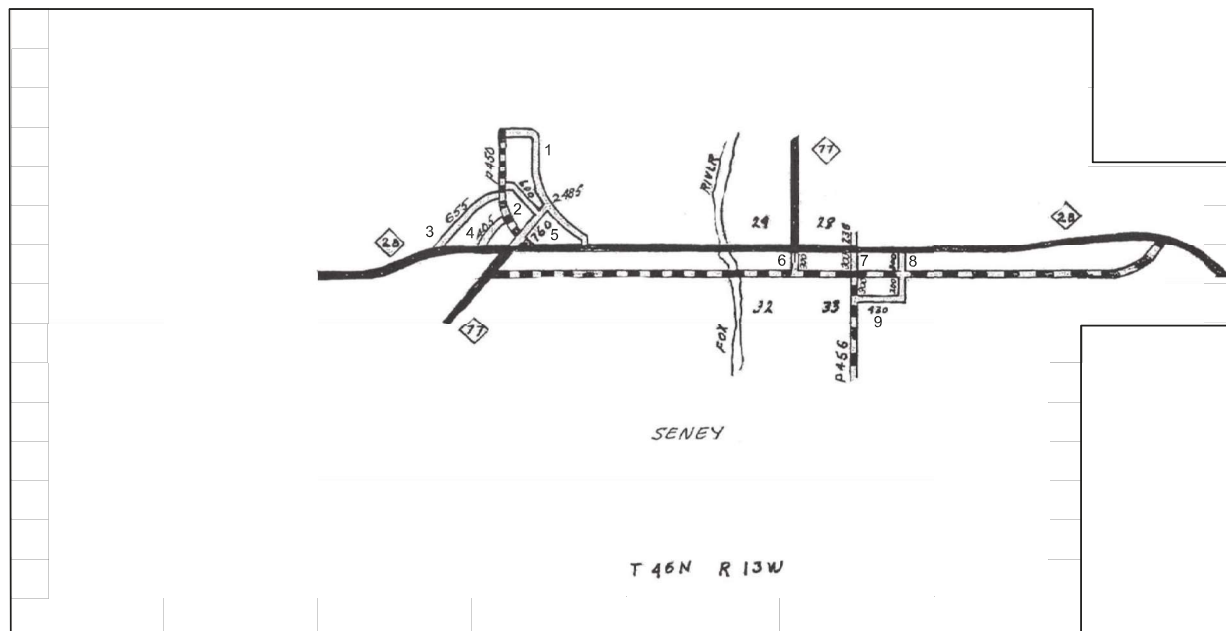
NUMBER OF ROAD

LENGTH IN MILES - TO THE NEAREST 1/100

NOTE: SEE MAP 41 FOR SURROUNDING ROADS.



SCALE 0 600 1200 FEET
ONE INCH EQUALS 600 FEET



Certification Map
of

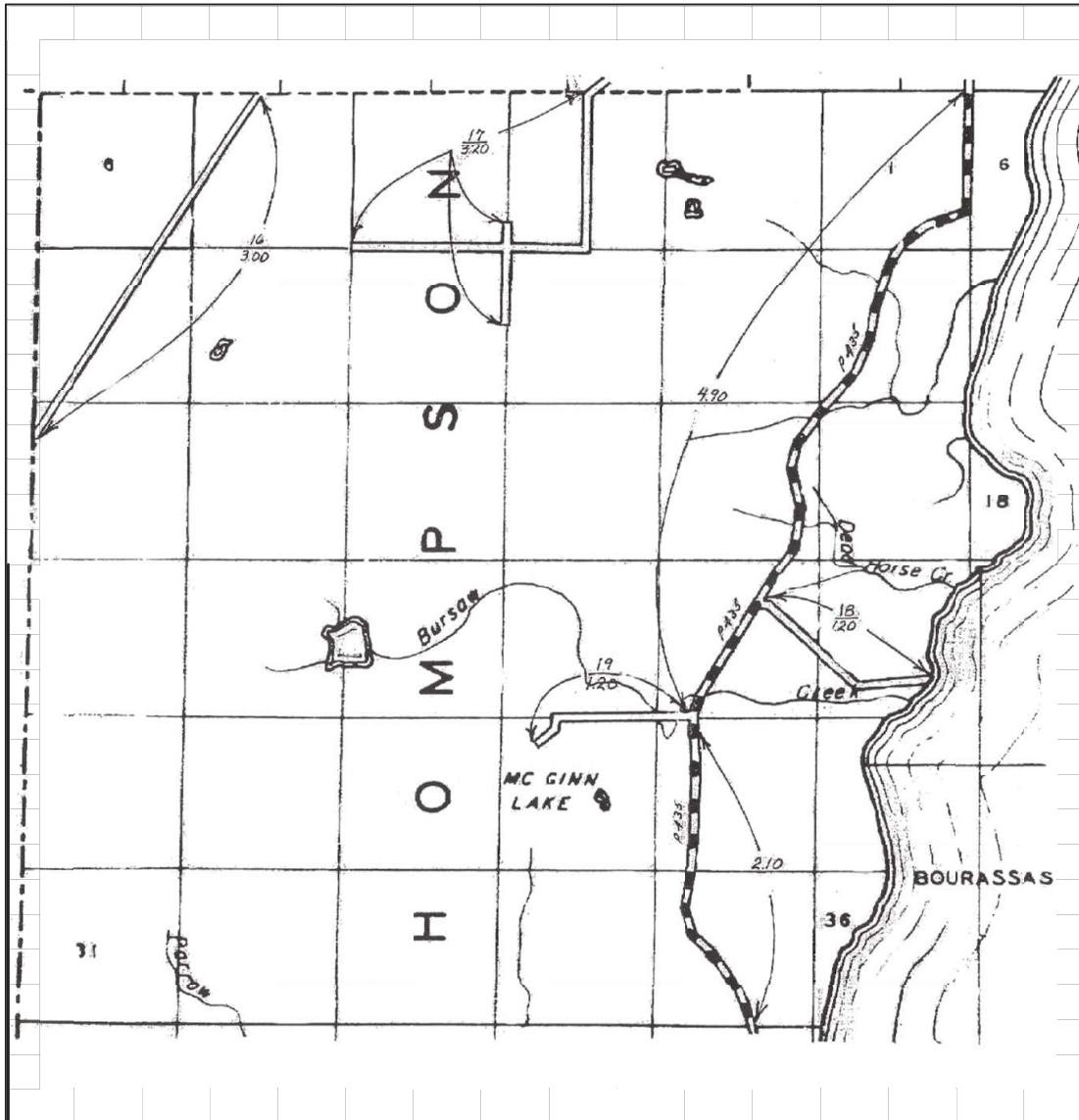
TOWNSHIP SENEY
SECTION 28 T. 46N R. 13W
COUNTY SCHOOLCRAFT - 75

Schoolcraft County Road Commission
Certified December 31, 2021

Prepared By: Ian Stampfl - County Highway Engineer
Schoolcraft County Road Commission

SEE MAP 27

DELTA COUNTY



SEE MAP 48

LEGEND

COUNTY LINE	---
CORPORATE LIMITS	----
STATE TRUNKLINE	=====
COUNTY PRIMARY	-----
COUNTY LOCAL	-----
ADJACENT COUNTY	=====
CITY OR VILLAGE STREET	=====

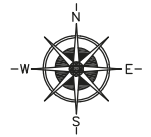
PRIMARY ROAD SYSTEM IS 7.0 MILES

LOCAL ROAD SYSTEM IS 8.60 MILES

PRIMARY
P-435 LITTLE HARBOR ROAD - 7.0 MILES

LOCAL
16, CARLSON ROAD - 3.00 MILES
17, FLODIN ROAD & ANDREWS ROAD - 3.20 MILES
18, GIERKE ROAD - 1.20 MILES
19, SCHUSTER ROAD - 1.20 MILES

NUMBER OF ROAD
LENGTH IN MILES - TO THE NEAREST 1/100



SCALE 0 1/2 1 MILE
ONE INCH EQUALS 3000 FEET

Certification Map
of

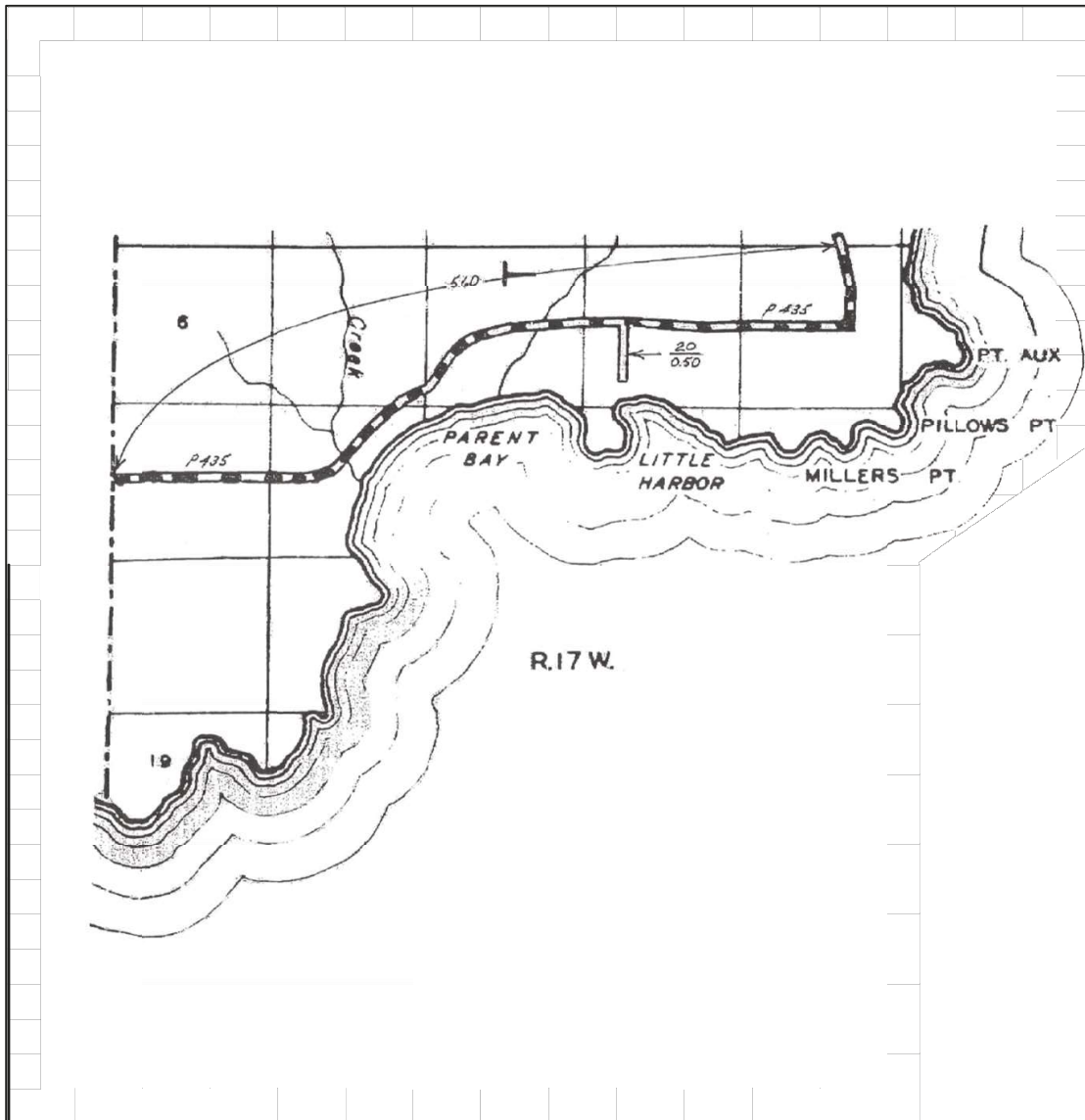
TOWNSHIP THOMPSON
SECTION T. 40N R. 17W
COUNTY SCHOOLCRAFT - 75

Schoolcraft County Road Commission
Certified December 31, 2021

Prepared By: Ian Stamply - County Highway Engineer
Schoolcraft County Road Commission

SEE MAP 47

DELTA COUNTY

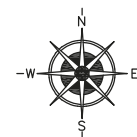


LEGEND

COUNTY LINE	----
CORPORATE LIMITS	----
STATE TRUNKLINE	=====
COUNTY PRIMARY	-----
COUNTY LOCAL	-----
ADJACENT COUNTY	=====
CITY OR VILLAGE STREET	=====

PRIMARY ROAD SYSTEM IS 5.60 MILES

LOCAL ROAD SYSTEM IS 0.50 MILES



PRIMARY

P-435 LITTLE HARBOR ROAD - 5.60 MILES

LOCAL

20. WILLIAMS ROAD - 0.50 MILES

NUMBER OF ROAD

LENGTH IN MILES - TO THE NEAREST 1/100

SCALE 0 1/2 1 MILE
ONE INCH EQUALS 3000 FEET

Certification Map
of

TOWNSHIP THOMPSON

SECTION T. 39N R. 17W

COUNTY SCHOOLCRAFT - 75

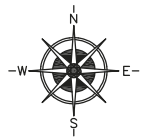
Schoolcraft County Road Commission
Certified December 31, 2021

Prepared By: Ian Stamply - County Highway Engineer
Schoolcraft County Road Commission

THOMPSON

COUNTY LINE	----
CORPORATE LIMITS	----
STATE TRUNKLINE	=====
COUNTY PRIMARY	=====
COUNTY LOCAL	=====
ADJACENT COUNTY	=====
CITY OR VILLAGE	=====
STREET	=====

LOCAL ROAD SYSTEM IS 1.06 MILES



NOTE: SEE MAP 19 FOR SURROUNDING
ROADS.

Schoolcraft County Road Commission
Certified December 31, 2024

MAP 49